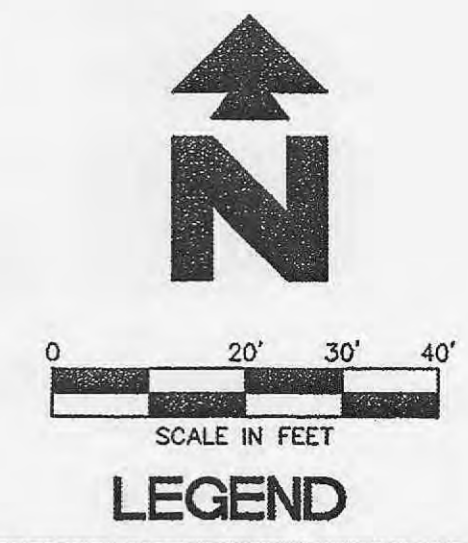


**Vicinity Map**  
Not to Scale



**BENCHMARK:**  
TOP OF SANITARY MANHOLE (PER IMPROVEMENT PLANS BY BUESCHER FRANKENBERG ASSOCIATES, INC. DATED MARCH 1996) IN ASPHALT DRIVE AT THE SOUTHWEST CORNER OF SITE WITH THE ELEVATION ON 527.00

**NOTE:**  
SEE ARCHITECTURAL PLANS FOR EXACT LOCATIONS AND DIMENSIONS OF PORCHES, RAMPS, VESTIBULE, SLOPED PAVING, TRUCK DOCKS, BUILDING UTILITY ENTRANCE LOCATIONS AND PRECISE BUILDING DIMENSIONS.



**LEGEND**

PROPOSED	EXISTING
--- BOUNDARY LINE	A-Pvmt - Asphalt Pavement
--- RIGHT OF WAY LINE	C-Pvmt - Concrete Pavement
--- STORM DRAIN	CB - Catch Basin
-X-G- GAS SERVICE	CL - Concline
-X-S- SANITARY SEWER SERVICE	CMP - Corrugated Metal Pipe
-UGE- UNDERGROUND ELECTRIC SERVICE	ChB - Chord Bearing
-UGE&T- UNDERGROUND ELECTRIC AND TELEPHONE SERVICE	Conc - Concrete
-UGT- UNDERGROUND TELEPHONE SERVICE	Cor - Corner
-X-W- WATER SERVICE	DB - Deed Book
	Ditch - Ravine/Ditch
	E - Edge
	FH - Fire Hydrant
	FL - Gutter
	FL 15" - Flowline 15 in
	GAS - UG Gas Line
	GI - Grate Inlet
	GW - Guy Wire
	L - Length of Curve
	Lt - Street Light
	MH - Manhole
	N/F - Now or Formerly
	NB - Overhead Wires
	PB - Plat Book
	PG - Page
	PL - Property Line
	R - Radius
	R/W - Right of Way
	Rec - Record
	Sprinkler - Lawn Sprinkler
	Surv - Survey
	TB - Top of Bank
	TC - Top Curb
	TS - Toe of Slope
	UP - Utility Pole

**GENERAL UTILITY NOTES**

- ALL WATER LINES SHALL BE TYPE "K" COPPER WITH 36" MIN. COVER.
- ALL SANITARY SEWER LINES SHALL BE PVC SDR-35 WITH 36" MIN. COVER.
- CONTRACTOR SHALL COORDINATE ANY DISRUPTIONS TO EXISTING UTILITY SERVICES WITH ADJACENT PROPERTY OWNERS.
- ALL ELECTRIC, TELEPHONE AND GAS EXTENSIONS INCLUDING SERVICE LINES SHALL BE CONSTRUCTED TO THE APPROPRIATE UTILITY COMPANY SPECIFICATIONS. ALL UTILITY DISCONNECTIONS SHALL BE COORDINATED WITH THE DESIGNATED UTILITY COMPANIES.
- CONSTRUCTION SHALL NOT START ON ANY PUBLIC UTILITY SYSTEM UNTIL WRITTEN APPROVAL HAS BEEN RECEIVED BY THE ENGINEER FROM THE APPROPRIATE GOVERNING AUTHORITY AND CONTRACTOR HAS BEEN NOTIFIED BY THE ENGINEER.
- PRIOR TO THE CONSTRUCTION OF OR CONNECTION TO ANY STORM DRAIN, SANITARY SEWER, WATER MAIN OR ANY OF THE DRY UTILITIES, THE CONTRACTOR SHALL EXCAVATE, VERIFY AND CALCULATE ALL POINTS OF CONNECTION AND ALL UTILITY CROSSINGS AND INFORM CEI ENGINEERING AND THE OWNER/DEVELOPER OF ANY CONFLICT OR REQUIRED DEVIATIONS FROM THE PLAN. NOTIFICATION SHALL BE MADE A MINIMUM OF 48 HOURS PRIOR TO CONSTRUCTION. CEI ENGINEERING AND ITS CLIENTS SHALL BE HELD HARMLESS IN THE EVENT THAT THE CONTRACTOR FAILS TO MAKE SUCH NOTIFICATION.
- UNLESS OTHERWISE SHOWN, CALLED OUT OR SPECIFIED HEREON OR WITHIN SPECIFICATIONS:
  - ALL WATER LINE PIPE BEDDING SHALL BE INSTALLED PER DETAIL 42A.
  - ALL SANITARY SEWER PIPE BEDDING SHALL BE INSTALLED PER DETAIL 42B.

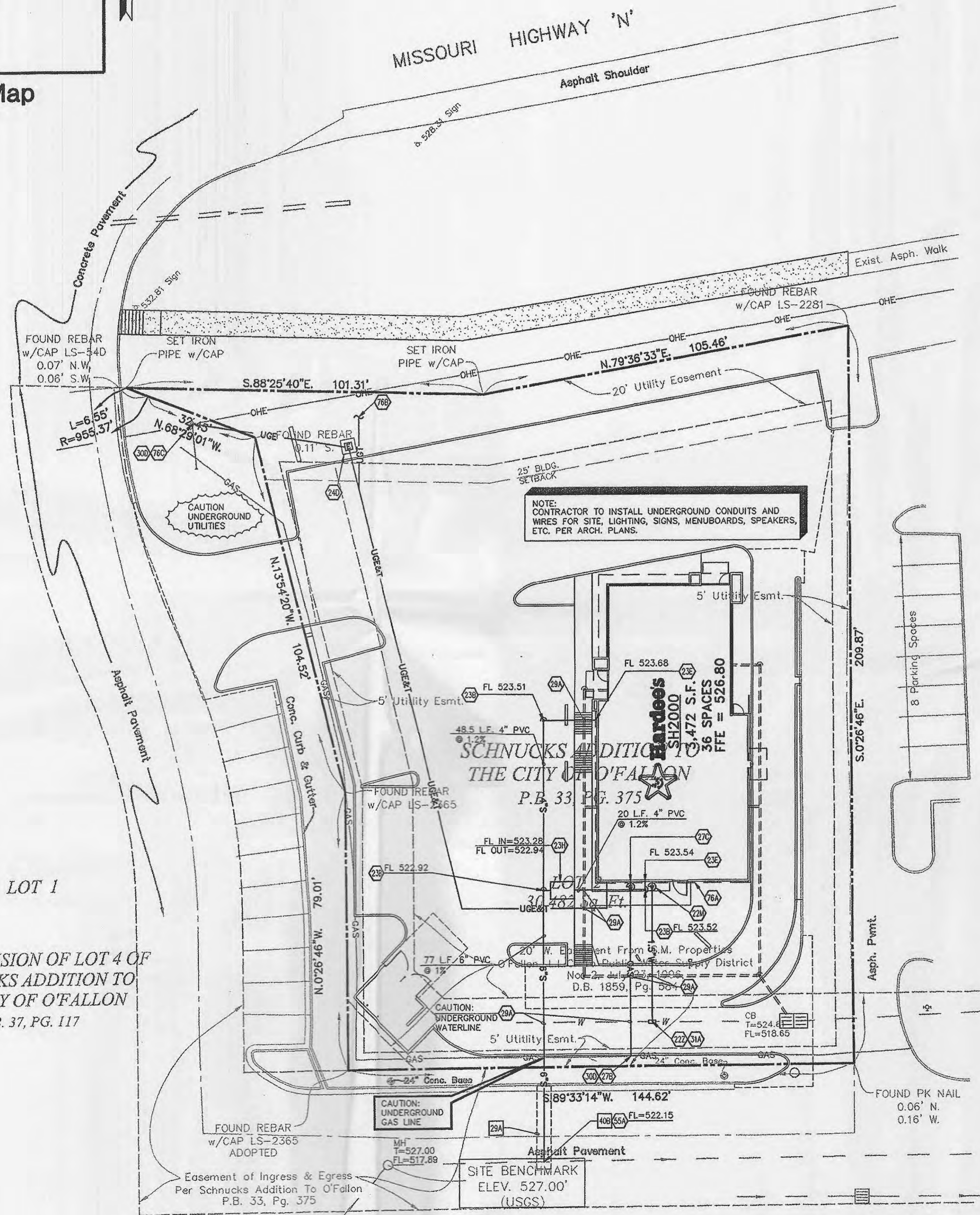
**UTILITY DETAILS**

29A	ASPHALT STREET OR DRIVE CUT/REPAIR
40B	SANITARY SEWER SERVICE WYE

- UTILITY NOTES**
- 224 PROPOSED WATER METER (SEE SIZE THIS SHEET)
  - 222 POINT OF CONNECTION PER LOCAL CODES - DOMESTIC SERVICE TAP (SEE SIZES THIS SHEET)
  - 23B SANITARY SEWER CLEAN-OUT (PER LOCAL CODES)
  - 23E SANITARY SEWER SERVICE ENTRY (PER ARCH. PLANS)
  - 23H GREASE TRAP WITH CLEAN-OUT (PER ARCH. PLANS)
  - 23J CONNECT TO EXISTING SANITARY SEWER MANHOLE
  - 24D PROPOSED ELECTRIC TRANSFORMER
  - 27B GAS SERVICE PER LOCAL GAS COMPANY
  - 27C PROPOSED GAS METER
  - 29A MAINTAIN MIN. 18" VERTICAL SEPARATION. VERIFY LOCATION AND DEPTH OF EXISTING UTILITY BEFORE CONSTRUCTING PROPOSED UTILITY
  - 31A LOCATION FOR THIS UTILITY AS SHOWN IS FOR DRAWING PURPOSES ONLY. CONTRACTOR SHALL VERIFY THE EXACT LOCATION IN FIELD PRIOR TO THE CONSTRUCTION OF THE PROPOSED UTILITY LINE TO BE CONNECTED. CONTRACTOR SHALL NOTIFY CEI ENGINEERING ASSOCIATES, INC. IF THE DESIGN AS SHOWN IS NOT ACHIEVABLE.
  - 55A CONTRACTOR SHALL VERIFY EXACT LOCATION AND DEPTH OF EXISTING SANITARY SEWER SERVICE. IF DEPTH IS NOT ADEQUATE FOR CONNECTION OF NEW LINE, CONTACT CEI ENGINEERING ASSOCIATES WITH INFORMATION FOR EVALUATION OF ALTERNATIVES.
  - 76A UNDERGROUND ELECTRIC AND TELEPHONE SERVICE ENTRY (PER ARCH. PLANS)
  - 76B CONNECT TO EXISTING TELEPHONE SERVICE PER UTILITY COMPANY.
  - 76C CONNECT TO ELECTRIC SERVICE PER UTILITY COMPANY

**UTILITY CONTACTS:**

- SANITARY SEWER  
DUCKETT CREEK SANITARY DISTRICT  
STEVE OVERBEY @ (636) 441-1244
- WATER  
ST. CHARLES COUNTY PUBLIC WATER SUPPLY DISTRICT NO. 2  
TERRY KOLAN @ (636) 561-3737
- ELECTRIC  
AMEREN U.E. ELECTRIC CO.  
JOHN CLARK @ (636) 639-8312
- TELEPHONE  
VERIZON TELEPHONE CO.  
CARL OWENS @ (636) 332-7392
- GAS  
ST. CHARLES GAS CO.  
MIKE LANGAN @ (636) 946-0352

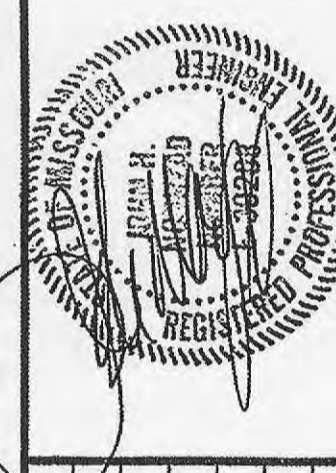


**SCHNUCKS ADDITION TO THE CITY OF O'FALLON**  
P.B. 33, PG. 375

**RESUBDIVISION OF LOT 4 OF SCHNUCKS ADDITION TO THE CITY OF O'FALLON**  
P.B. 37, PG. 117

**ENGINEERING ASSOCIATES, INC.**  
SURVEYORS  
12200 Ford Road, Suite 110  
Dallas, TX 75225  
(972) 486-3727  
FAX (972) 486-6726  
JOB NO.: 17633.0  
DWG NAME: 7533proj.dwg

**Arc Vision Inc.**  
ARCHITECTURE & ENGINEERING  
1000 N. W. 10th Street, Suite 100  
St. Louis, MO 63101  
PH: (314) 426-3600  
FAX: (314) 426-3601



DATE	REVISIONS
9/20/02	REVISED PLANS PER HARDEE'S
10/7/02	REVISED PLANS PER CITY COMMENTS
01/24/03	REVISED PLANS PER CITY COMMENTS

**Hardees**  
ARCHITECTURE AND ENGINEERING DEPT.  
505 NORTH 7TH STREET, SUITE 2000  
ST. LOUIS, MO 63101

**LOCATION:** HIGHWAY "N"  
O'FALLON, MISSOURI  
**BUILDING TYPE:** SH2000  
**SHEET TITLE:** UTILITY PLAN