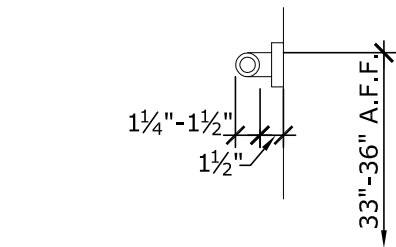


1. SEE SHEET AO.1.0 FOR GENERAL NOTES
2. CONSTRUCTION SHALL CONFORM TO THE FOLLOWING CODES:
2015 INTERNATIONAL BUILDING CODE, I.B.C.
2015 INTERNATIONAL RESIDENTIAL CODE, I.R.C.
2015 INTERNATIONAL ENERGY CONSERVATION CODE, I.E.C.C.
2015 INTERNATIONAL PLUMBING CODE, I.P.C.
2015 INTERNATIONAL MECHANICAL CODE, I.M.C.
2015 INTERNATIONAL FUEL GAS CODE
2015 INTERNATIONAL FIRE CODE
2014 NATIONAL ELECTRIC CODE, N.E.P.A.
2009 ICC A117.1
VERIFY ADDITIONAL MUNICIPAL REQUIREMENTS PER PLAN SHEET INDEX OF COVER SHEET
3. DIMENSIONS IN PARENTHESES INDICATE 8"-10" CONG. POUR.
4. ALL X2 JOISTS TO BE #1 S.P. (SOUTHERN PINE) OR X2 DFL (DOUGL. FIR-LARCH) - U.N.O.
ALL HERRING-BONE JOISTS TO BE OPENING FRAMING TO BE #1 S.P. (SOUTHERN PINE)



Technical drawings of a kitchen island showing top and side views with dimensions and labels.

Top View Labels and Dimensions:

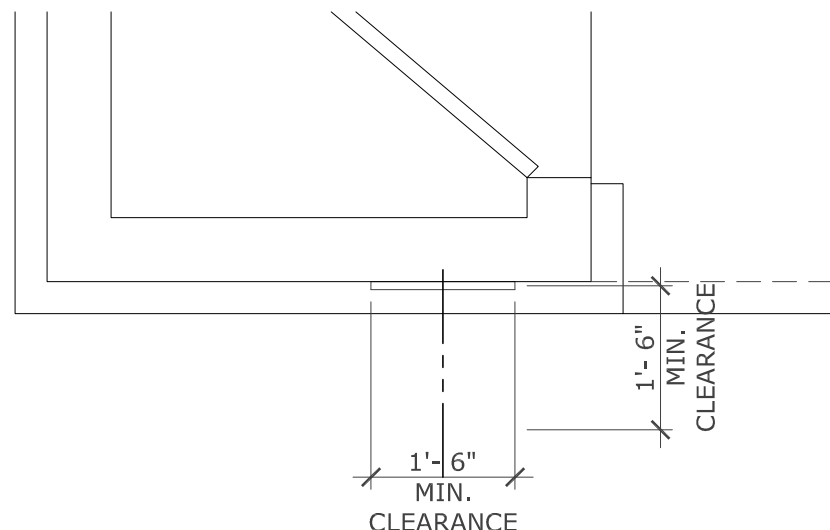
- MIRROR
- COUNTERTOP
- TO CENTER OF CONTROL
- PROTECT EXPOSED PIPES AGAINST CONTACT
- 3'-4" MAX.
- 2'-10" MAX.
- 44"-48"

Side View Labels and Dimensions:

- 1'-5" MAX.
- 2'-10" MIN. CLEARANCE

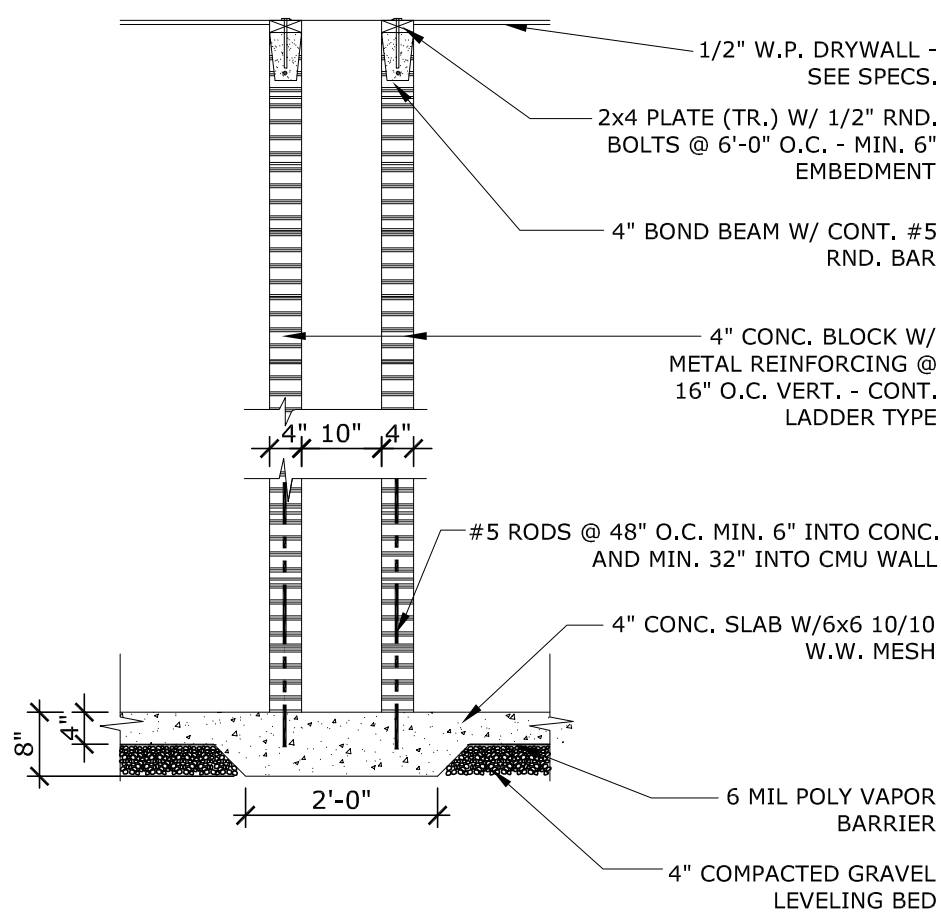
1/2"=1'-0"

NOTE: MOUNTING HEIGHT FOR RESTROOM ACCESSORIES WITH OPERABLE PARTS 44"- 48" IN ACCORDANCE w/ ICC/ANSI A117.1-09 - 2015 CHAPTER 6

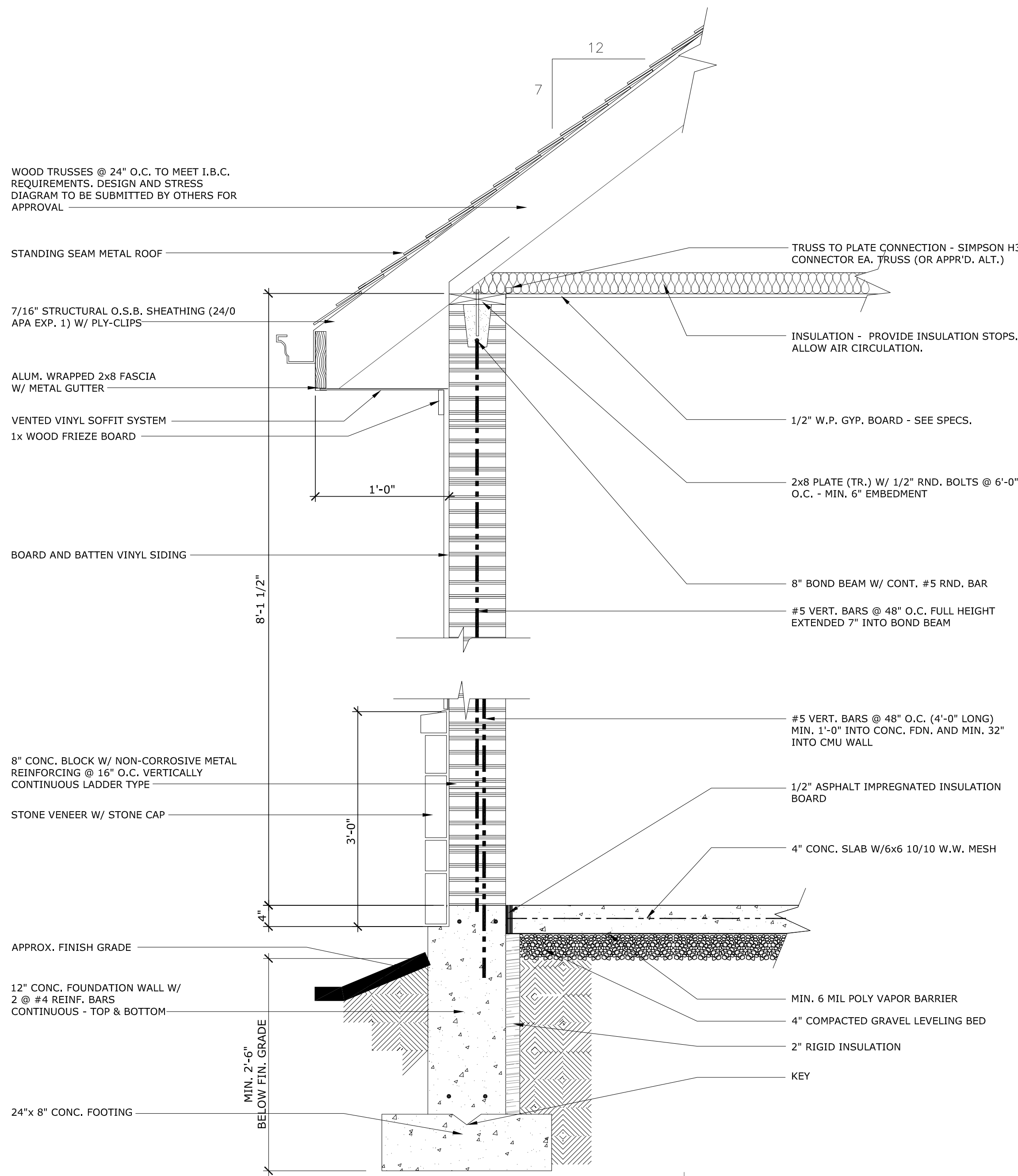
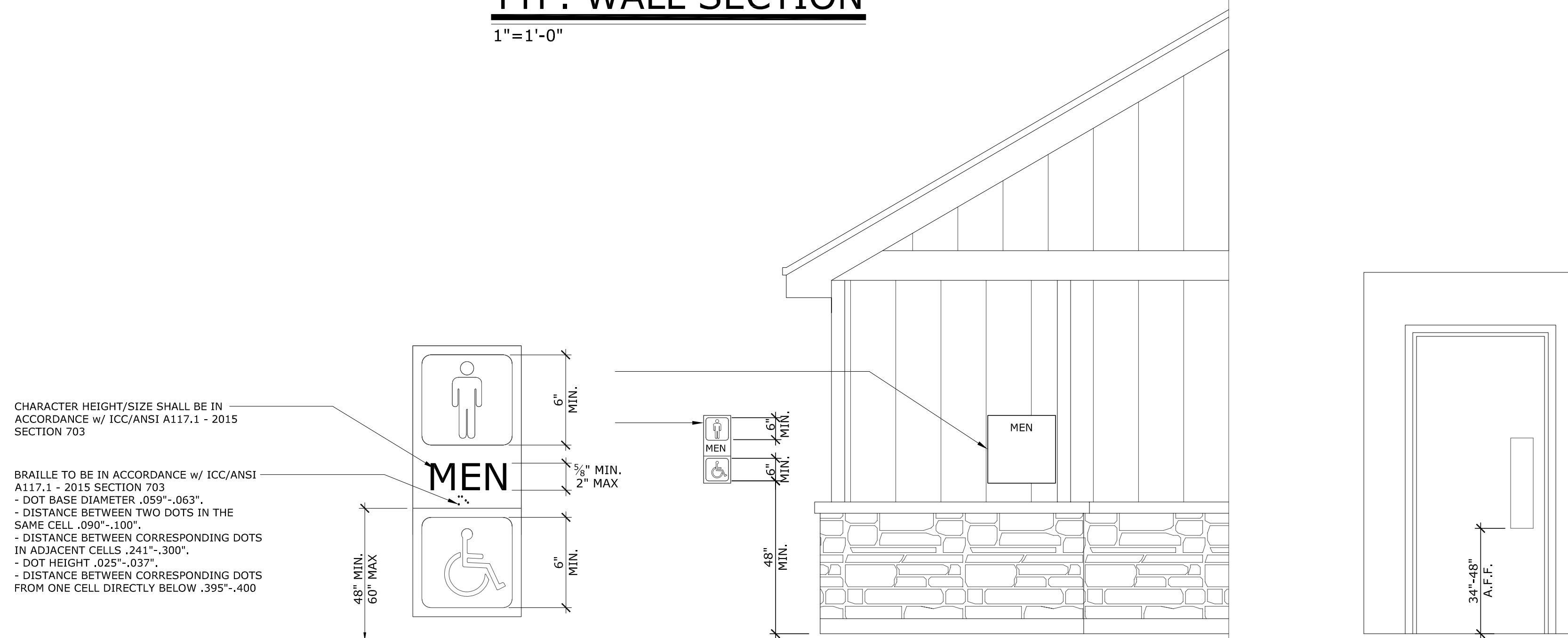


1/2"=1'-0"

NOTE: IN ACCORDANCE W ICC/ANSI A117.1 - 2015, SIGNAGE SHALL BE 48" MIN. ABOVE THE FINISHED FLOOR OR GROUND SURFACE, MEASURED FROM THE BASELINE OF THE LOWEST TACTILE CHARACTER AND 60" MAXIMUM ABOVE THE FINISH FLOOR OR GROUND SURFACE, MEASURED FROM THE BASELINE OF THE HIGHEST TACTILE CHARACTER



1/2"=1'-0" (NON-BEARING)


$$1'' = 1' - 0''$$

$$1/2'' = 1' - 0''$$

A5.1.1

2015 I.B.C.