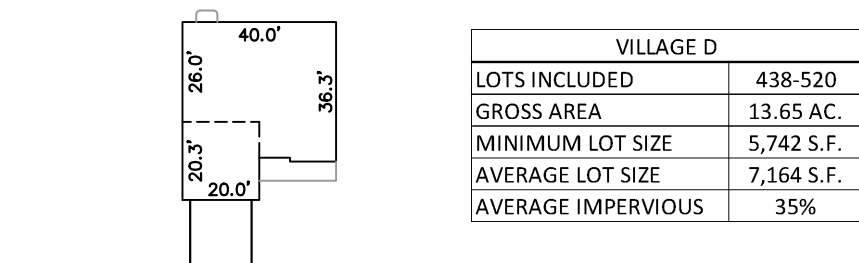
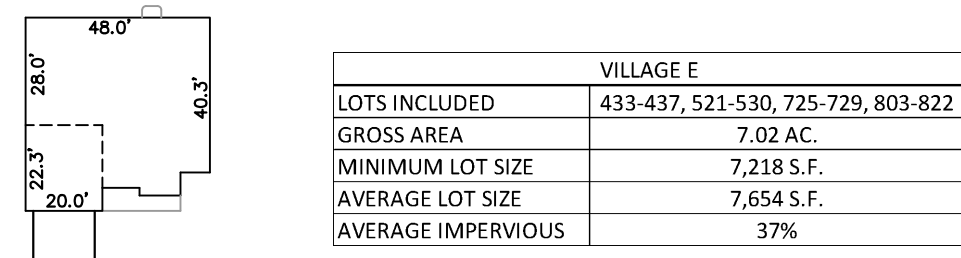


Drawing name: V:\20090327 Highway N Assemblies\Drawings\Engineering\Improvements\9327 IMP DETAILS.dwg Plotted on: Feb 04, 2025 - 8:27am Plotted by: jluettgenhaus

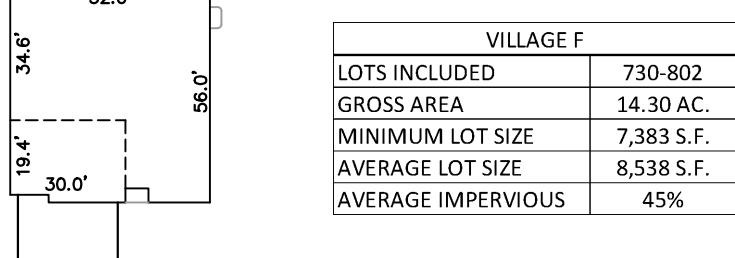
TYPICAL LOT DETAILS



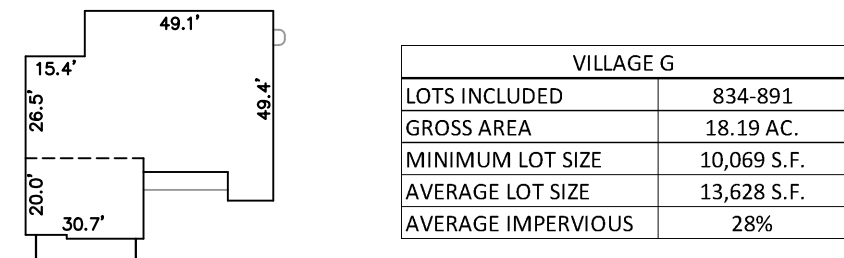
TYPICAL HOUSE "E" LOT



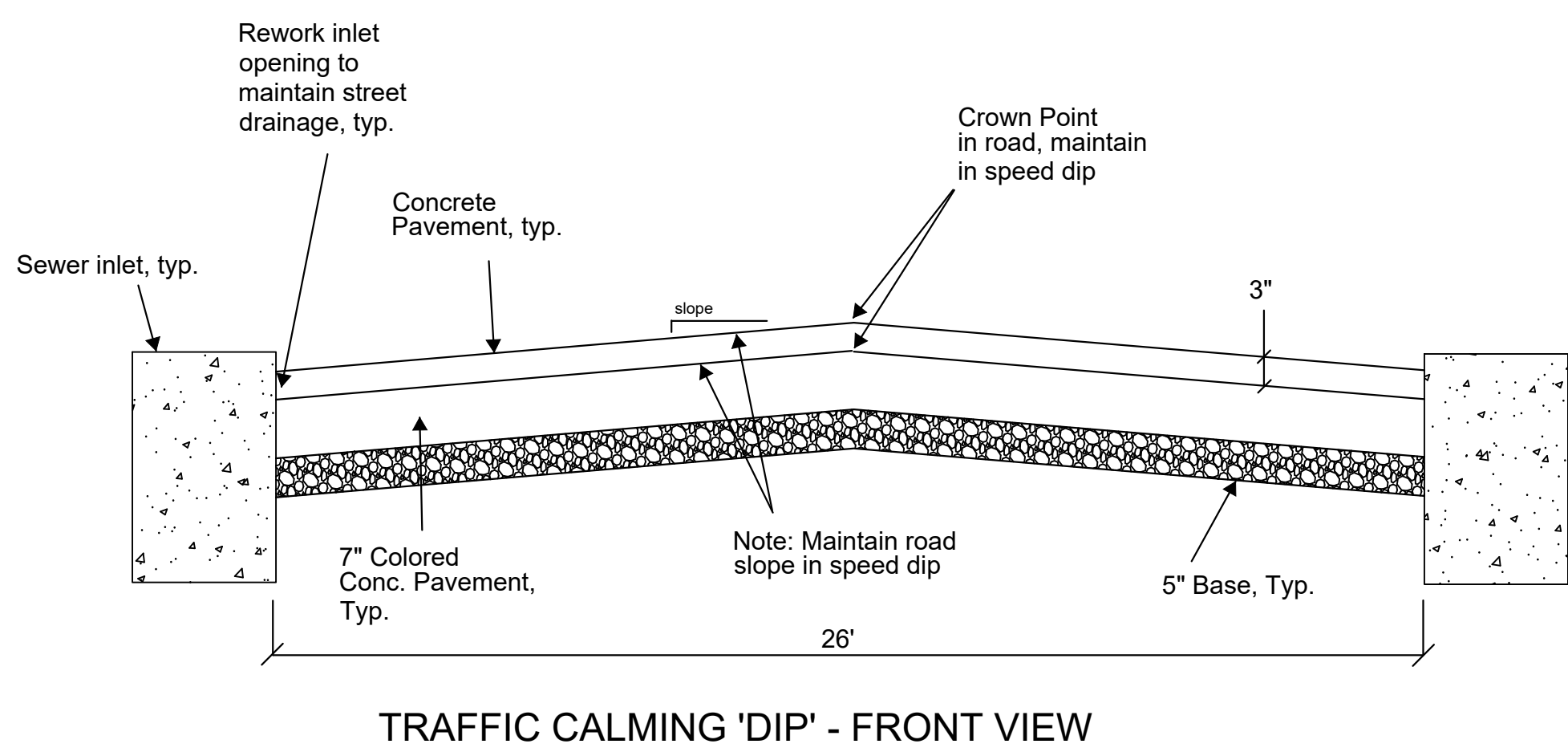
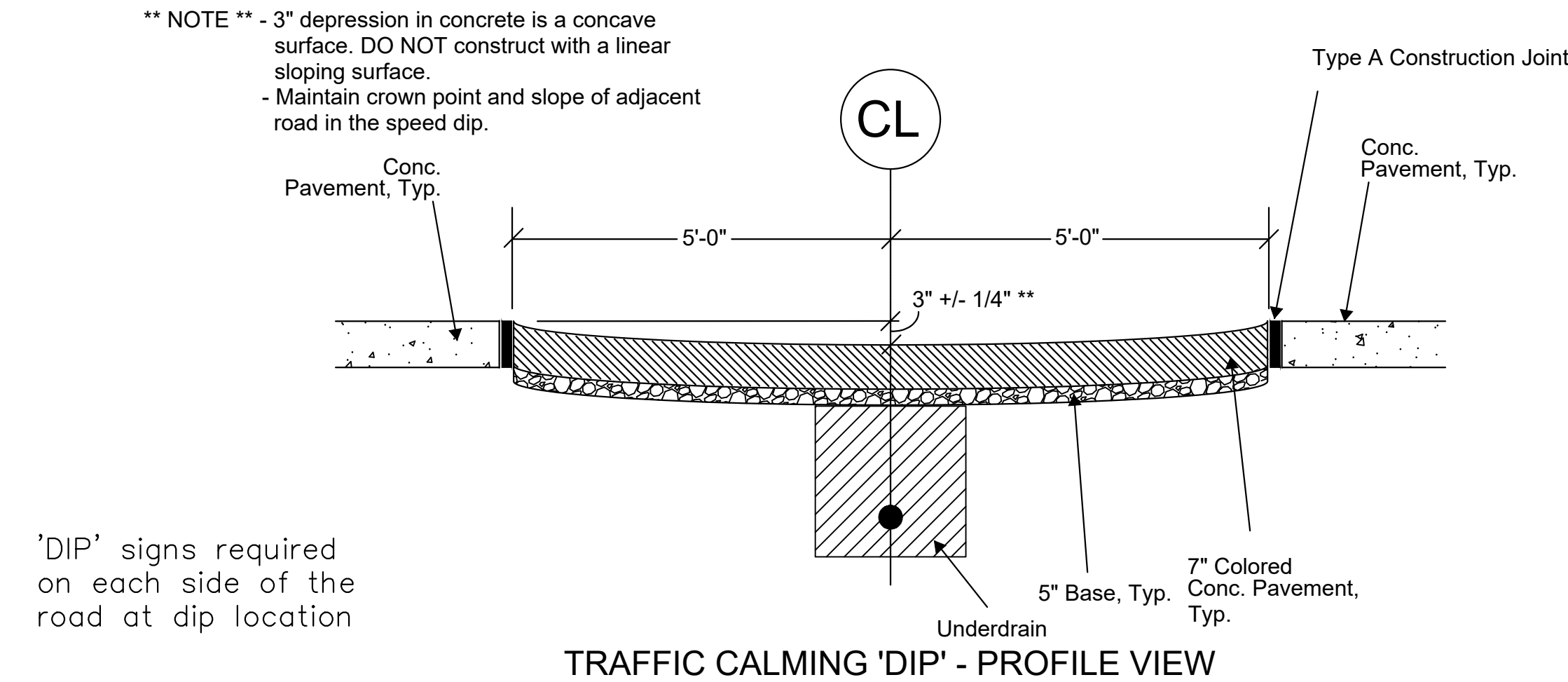
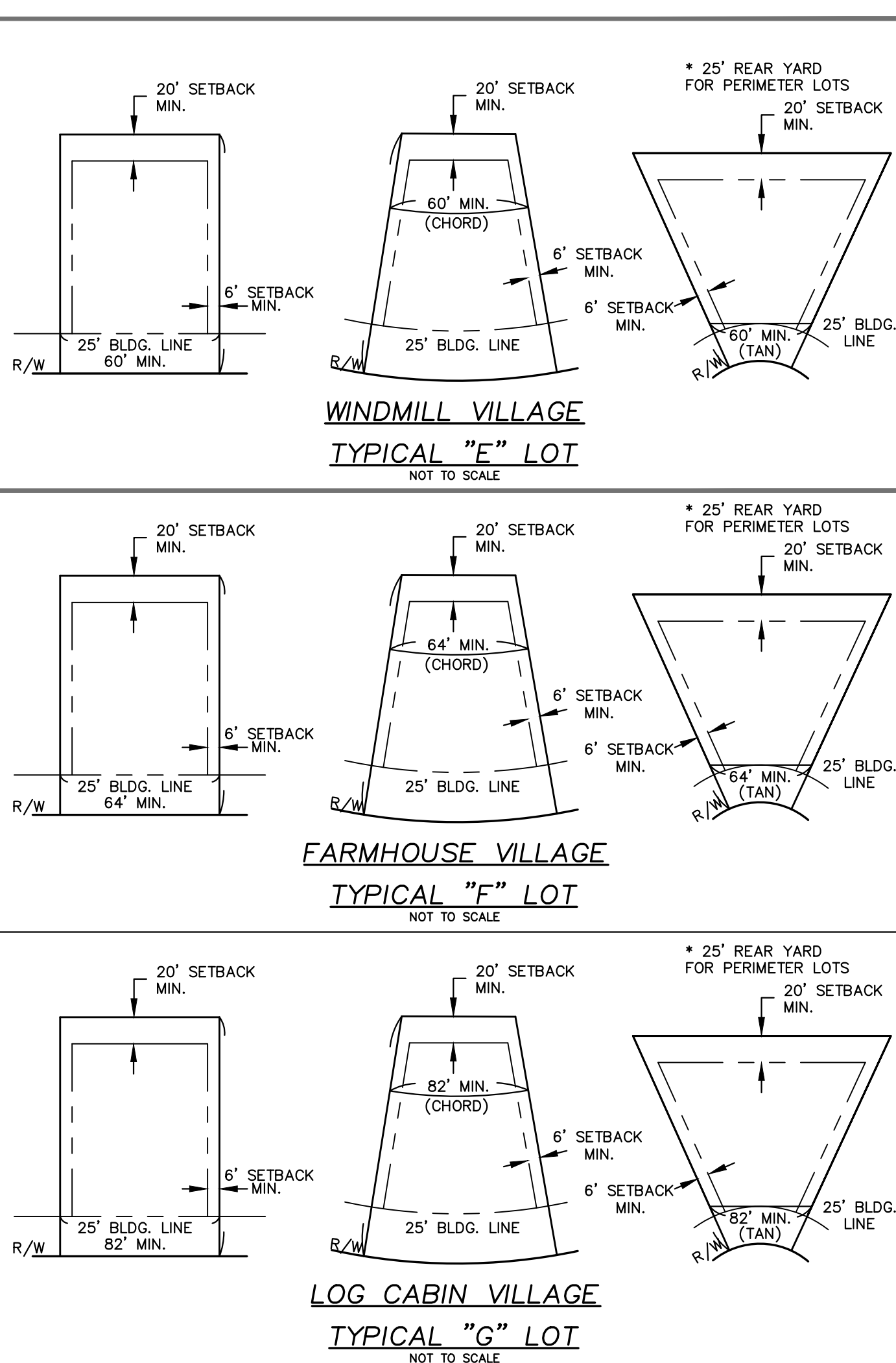
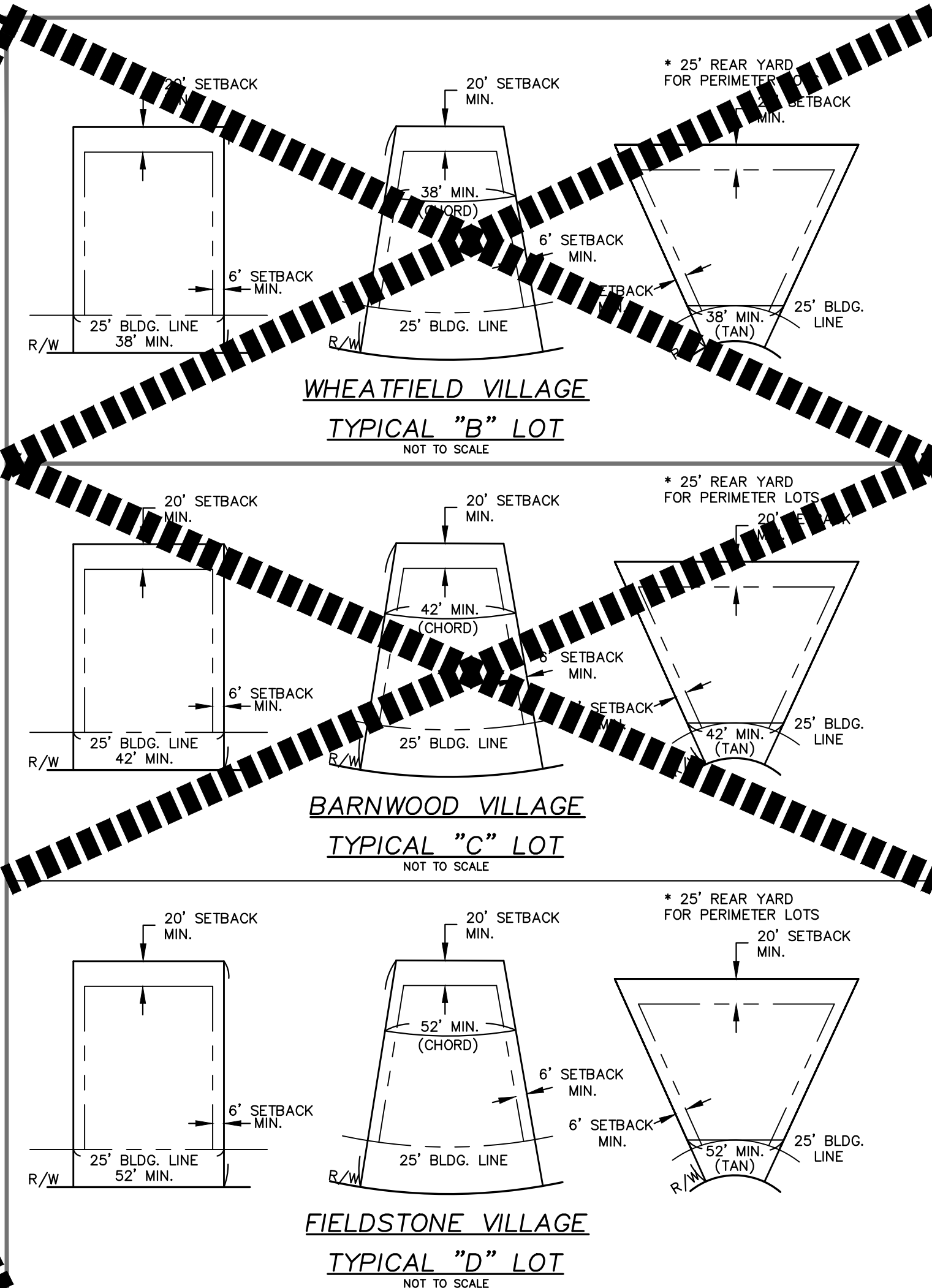
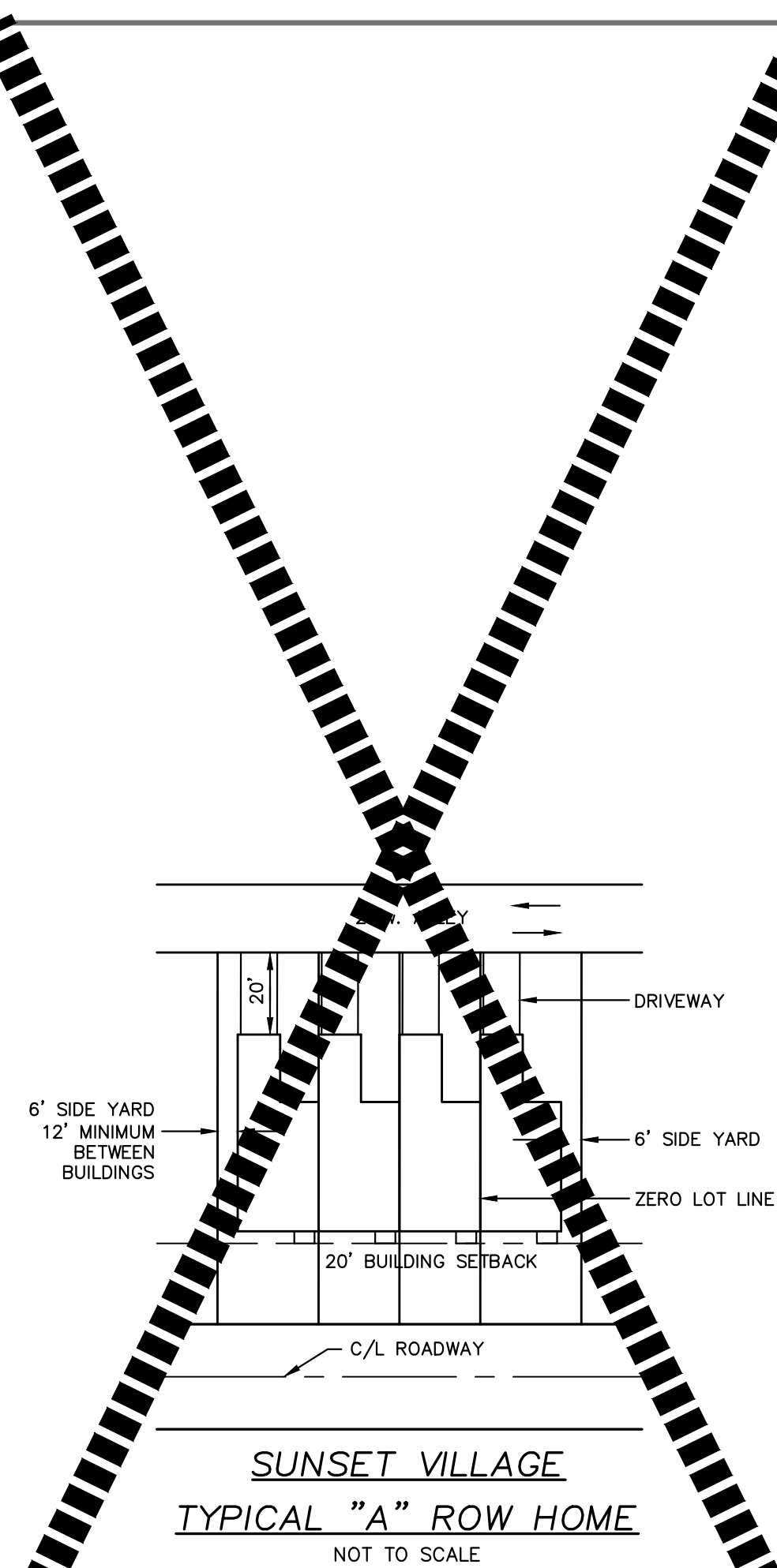
TYPICAL HOUSE "F" LOT



TYPICAL HOUSE "G" LOT



TYPICAL HOUSE "A" ROW HOME



ISSUE	REMARKS/DATE
1	2024-08-13, INITIAL SUBMITTAL CITY PH.2
2	2024-11-08, REVISED PER CITY COMMENTS
3	2024-01-03, REVISED PER CITY COMMENTS
4	2024-02-04, REVISED PER CITY COMMENTS

PROJECT TITLE

HARVEST  
AT HOPEWELL

O'Fallon, Missouri

O'FALLON PHASE 2

THE **STERLING** CO.  
ENGINEERS & SURVEYORS

5055 New Baumgartner Road  
St. Louis, Missouri 63129  
Ph 314-487-0440 Fax 314-487-8944  
www.sterling-eng-survey.com  
Corporate Certificate of Authority #001348

The Professional Engineer's seal and signature shall be placed on this sheet. All drawings, documents or other documents not containing this seal and signature shall not be considered valid and the Professional Engineer shall not be responsible for such drawings, documents or other documents.



Date: 02-04-2025  
Michael G. Boerding  
License No. MO E-28643  
Professional Engineer

HARVEST HOPEWELL, LLC  
5091 New Baumgartner Road  
St. Louis, Missouri 63129

PAVEMENT DETAILS

P+Z No. 21-004994  
City No. 21-011444  
Date: 02-04-2025  
Job No. 20-09-327

Page No.

DTL-11.1

IMP