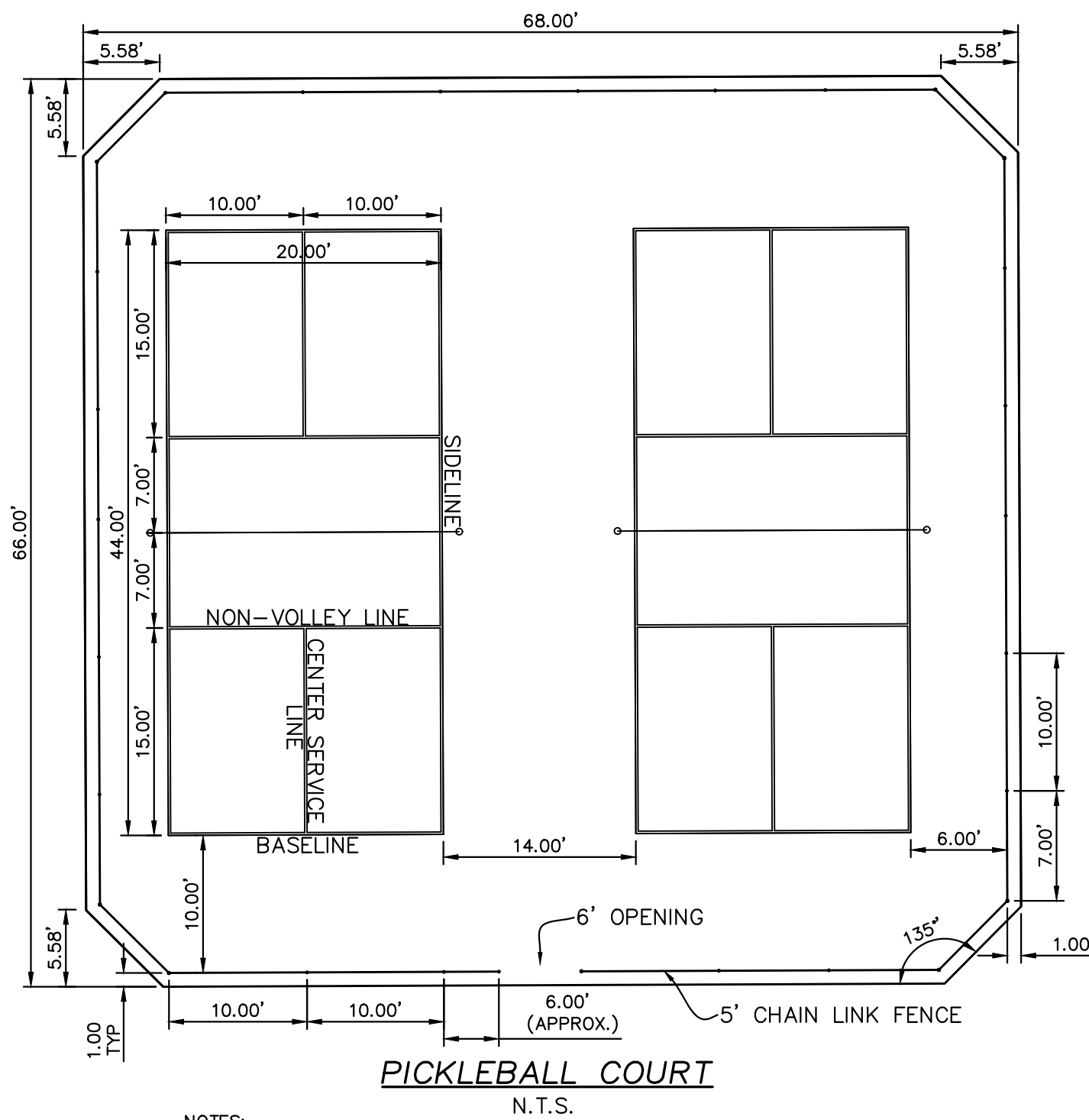
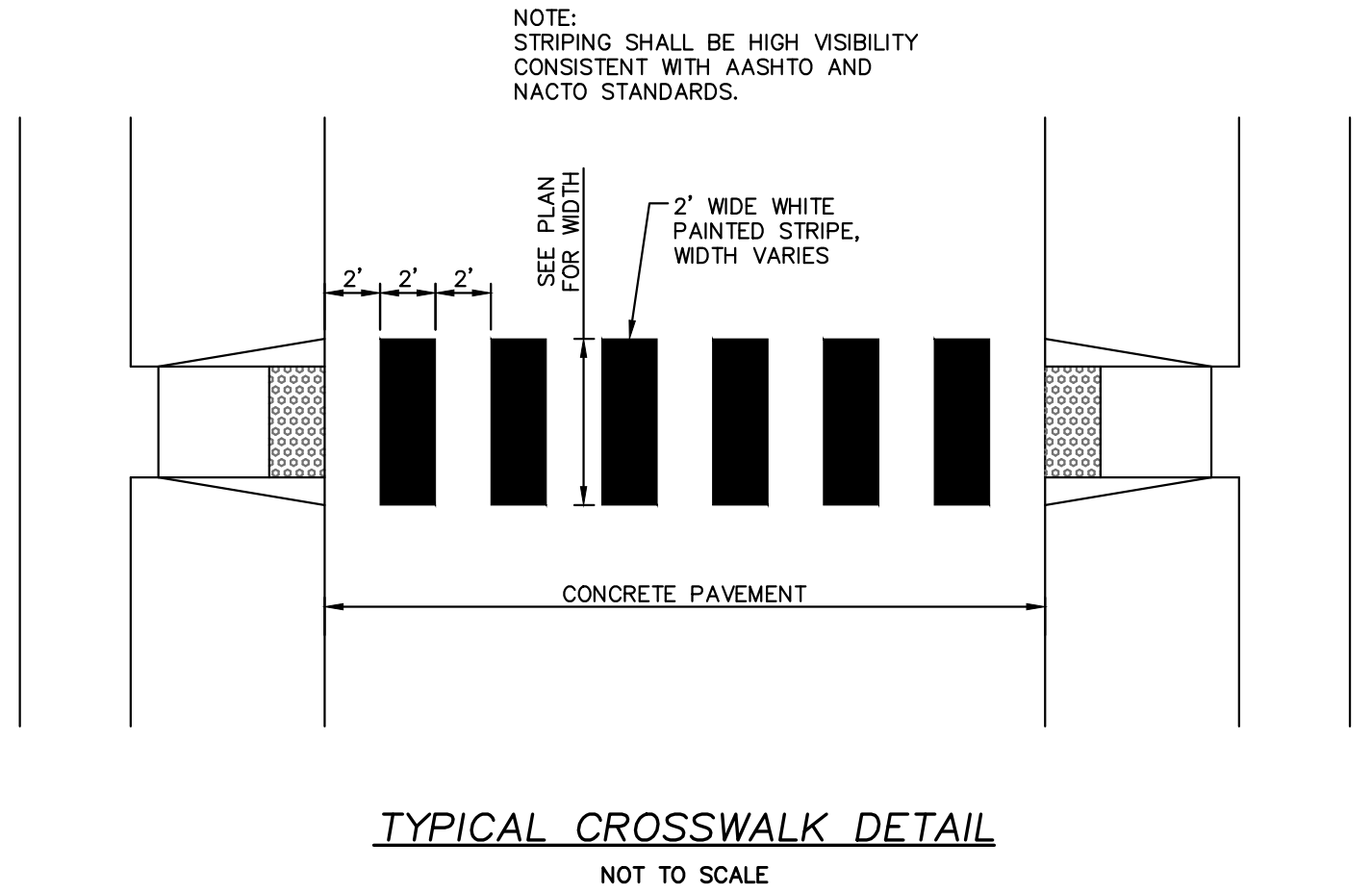
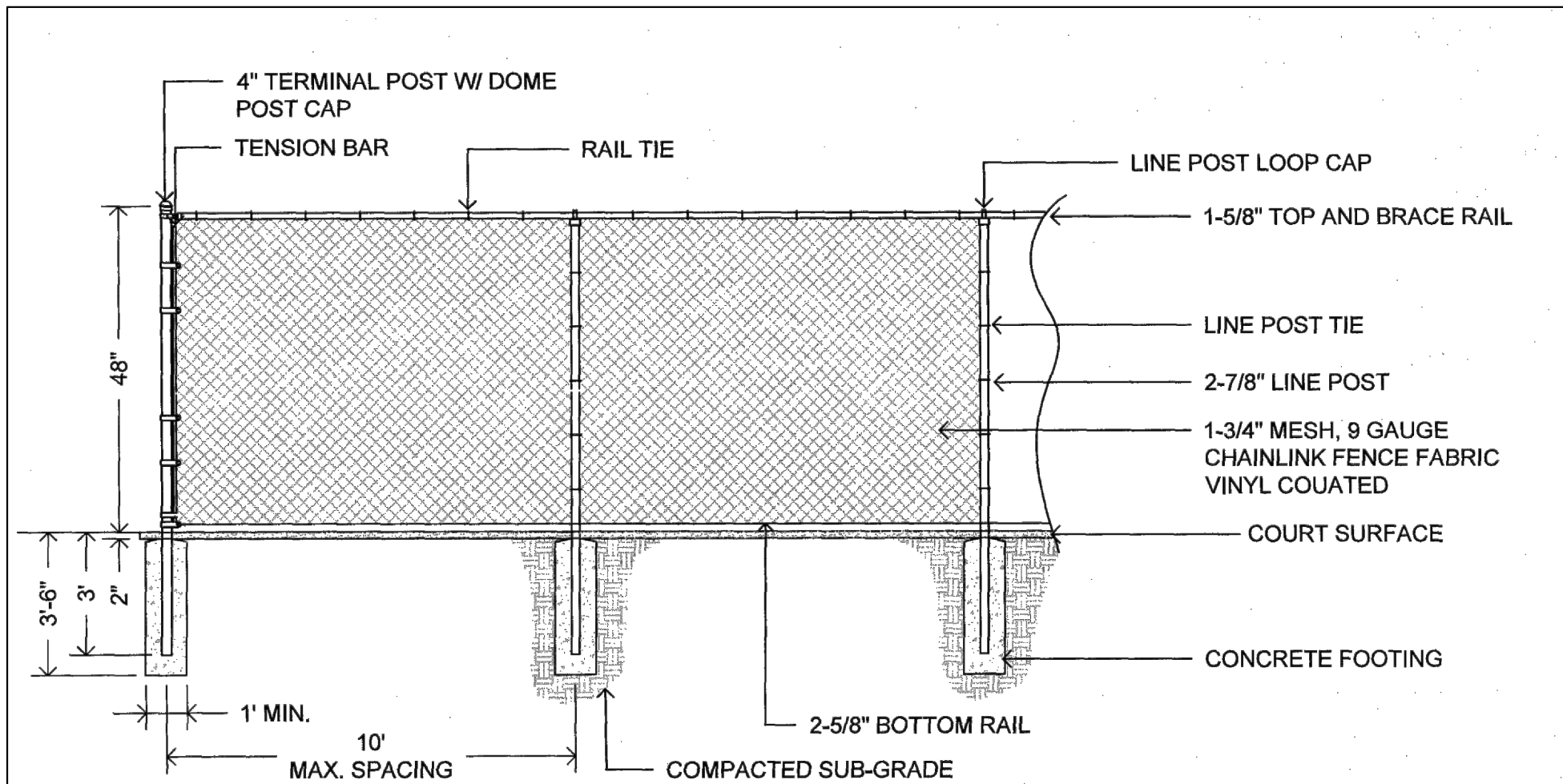


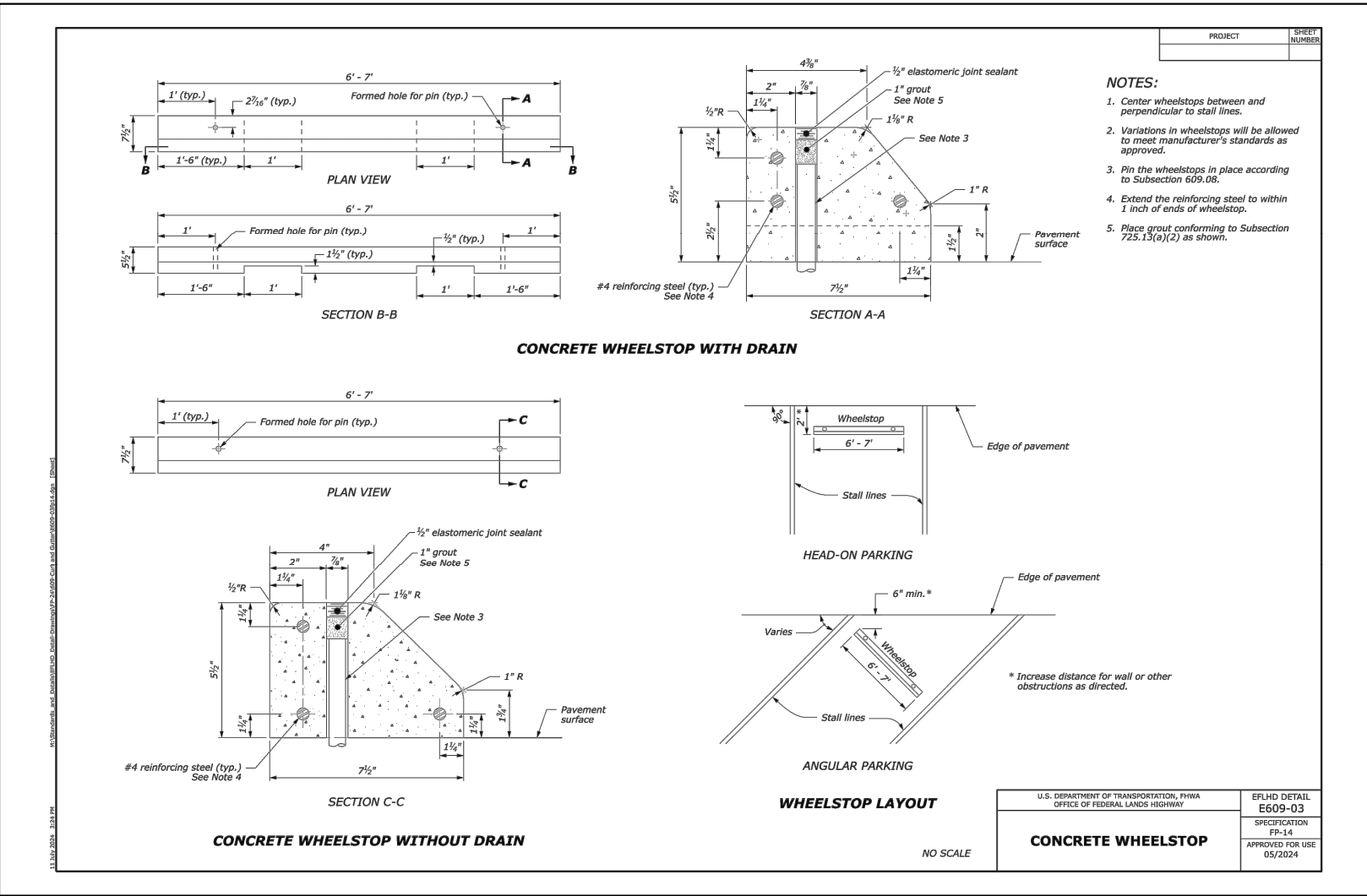
Drawing name: V:\2008\27 Highway N Accessible Drawings\Engineering\Improvements\27 IMP DETAILS.dwg, Plotted on: 5/6/24, 2:25:18 PM, Plotted by: jlukenhaus
Drawing name: V:\2008\27 Highway N Accessible Drawings\Engineering\Improvements\27 IMP DETAILS.dwg, Plotted on: 5/6/24, 2:25:18 PM, Plotted by: jlukenhaus



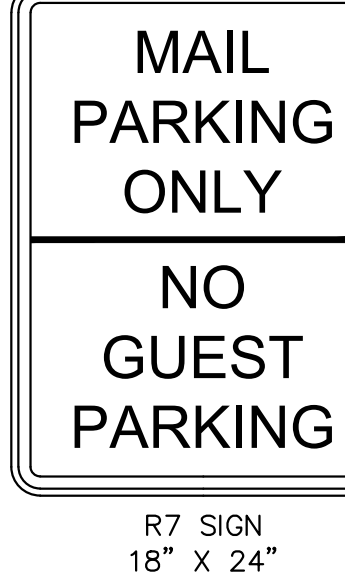
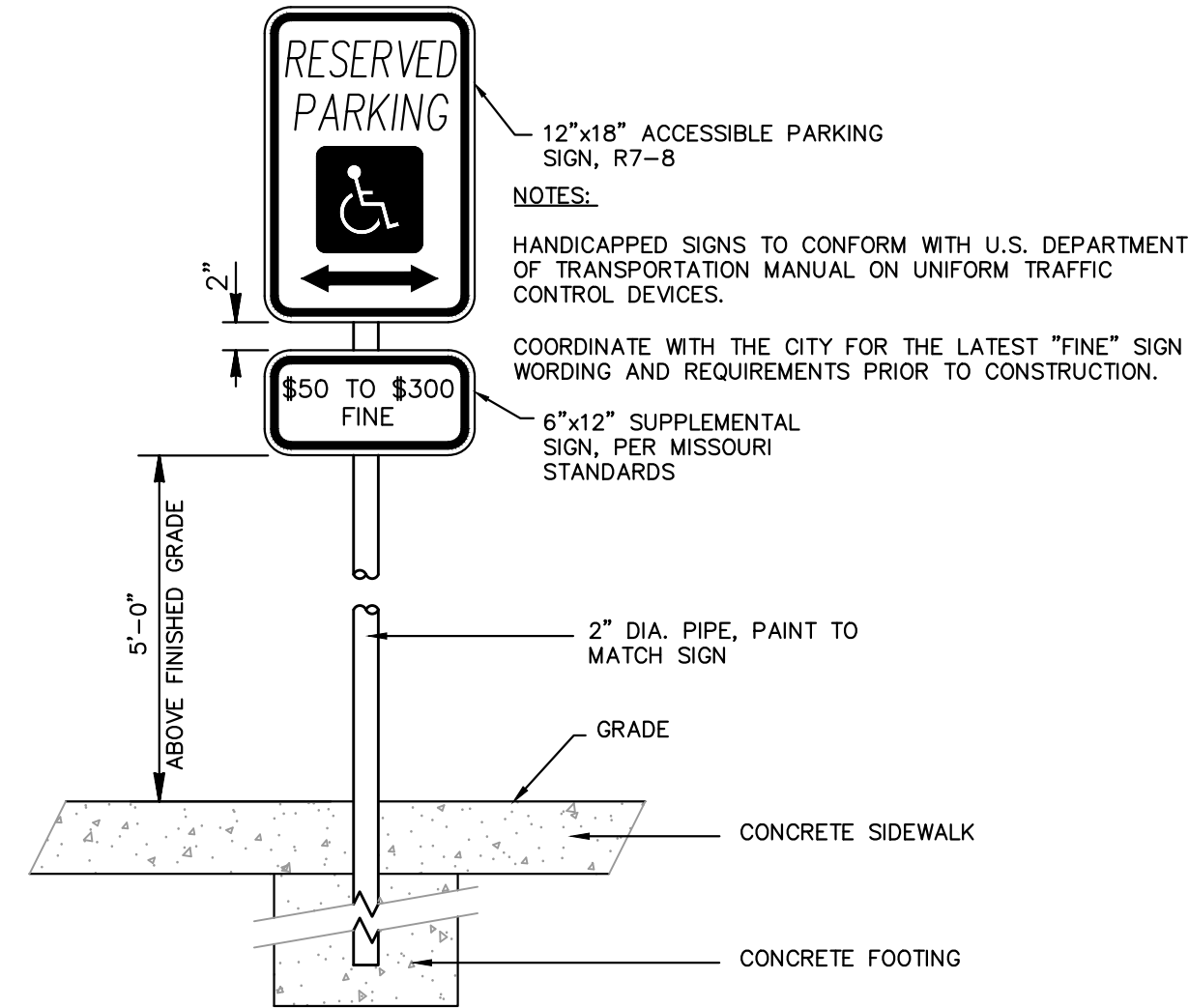
- NOTES:
- PICKLEBALL COURT COLORS:
 - a. LINES: WHITE
 - b. PAINT: GREEN
 - c. COURT: BLUE
 - ALL DIMENSIONS ARE TO THE OUTSIDE OF LINES.
 - ALL LINES SHALL BE 2 INCHES WIDE.
 - NET: USAPA APPROVED NET POST 22" INSIDE POST TO INSIDE POST, 36" NET HEIGHT AT POST, 34" NET HEIGHT AT CENTER.
 - STRAP BAND SHALL HAVE A MAXIMUM WIDTH OF 2".
 - MAXIMUM DIAMETER OF METAL CORD OR METAL CABLE SHALL BE 3"



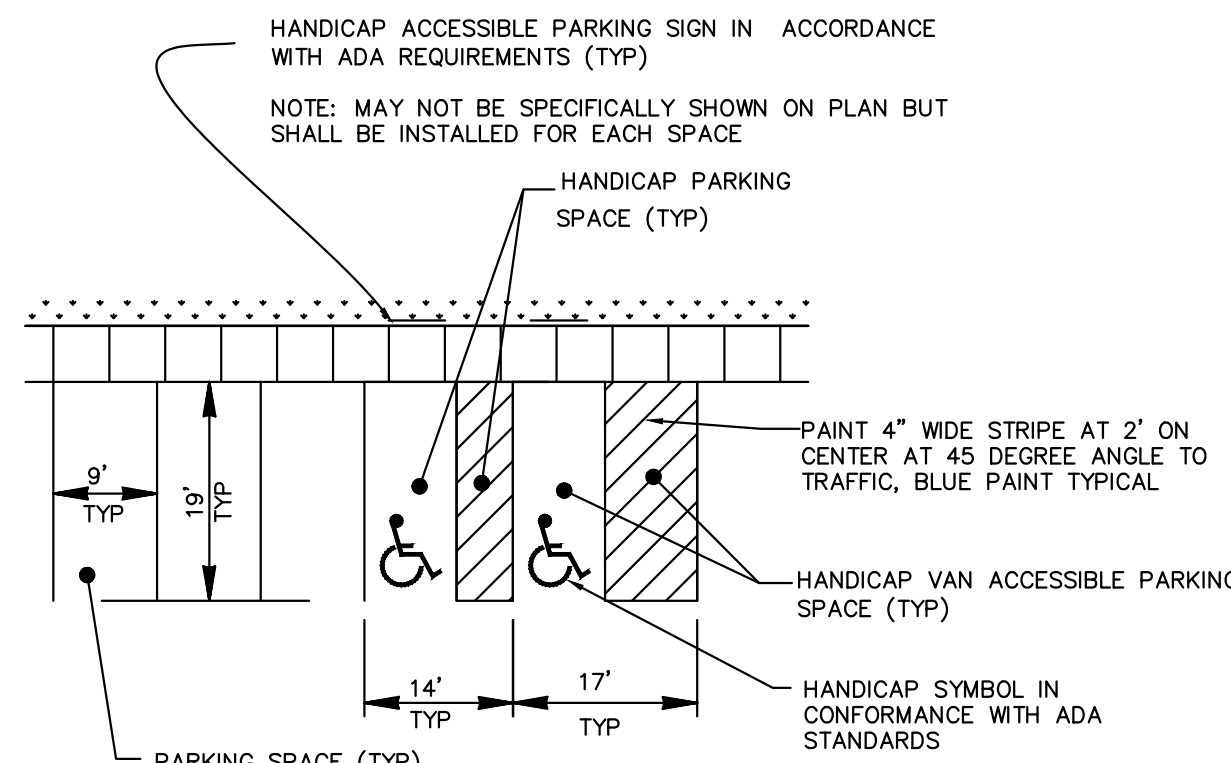
CHAIN LINK FENCE DETAIL (BLACK VINYL)
N.T.S.



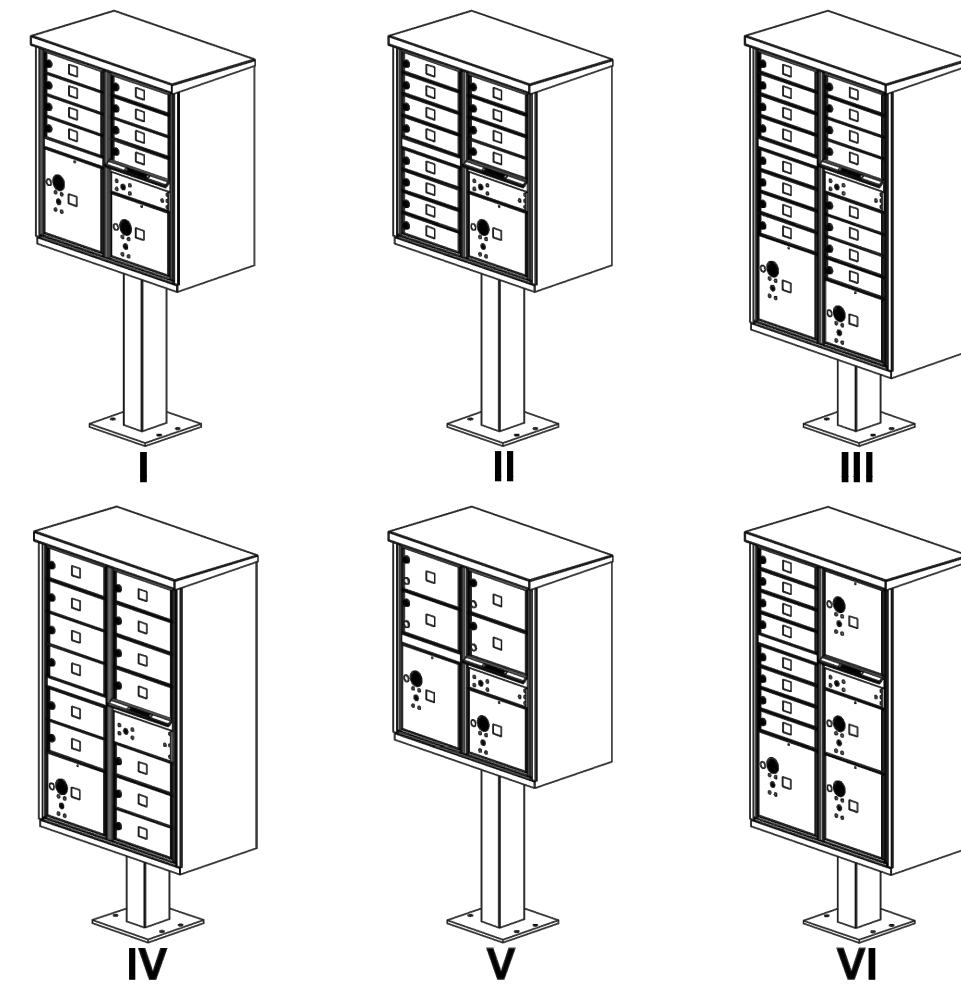
WHEEL STOP DETAIL



MAIL PARKING SIGN DETAIL
NOT TO SCALE



- NOTES:
- ALL PARKING STRIPING SHALL BE 4" PAINTED WHITE LINES (TYP)
- ALL ACCESSIBLE PARKING STRIPING SHALL BE 4" PAINTED BLUE LINES
- TYPICAL PARKING STRIPING**
N.T.S.

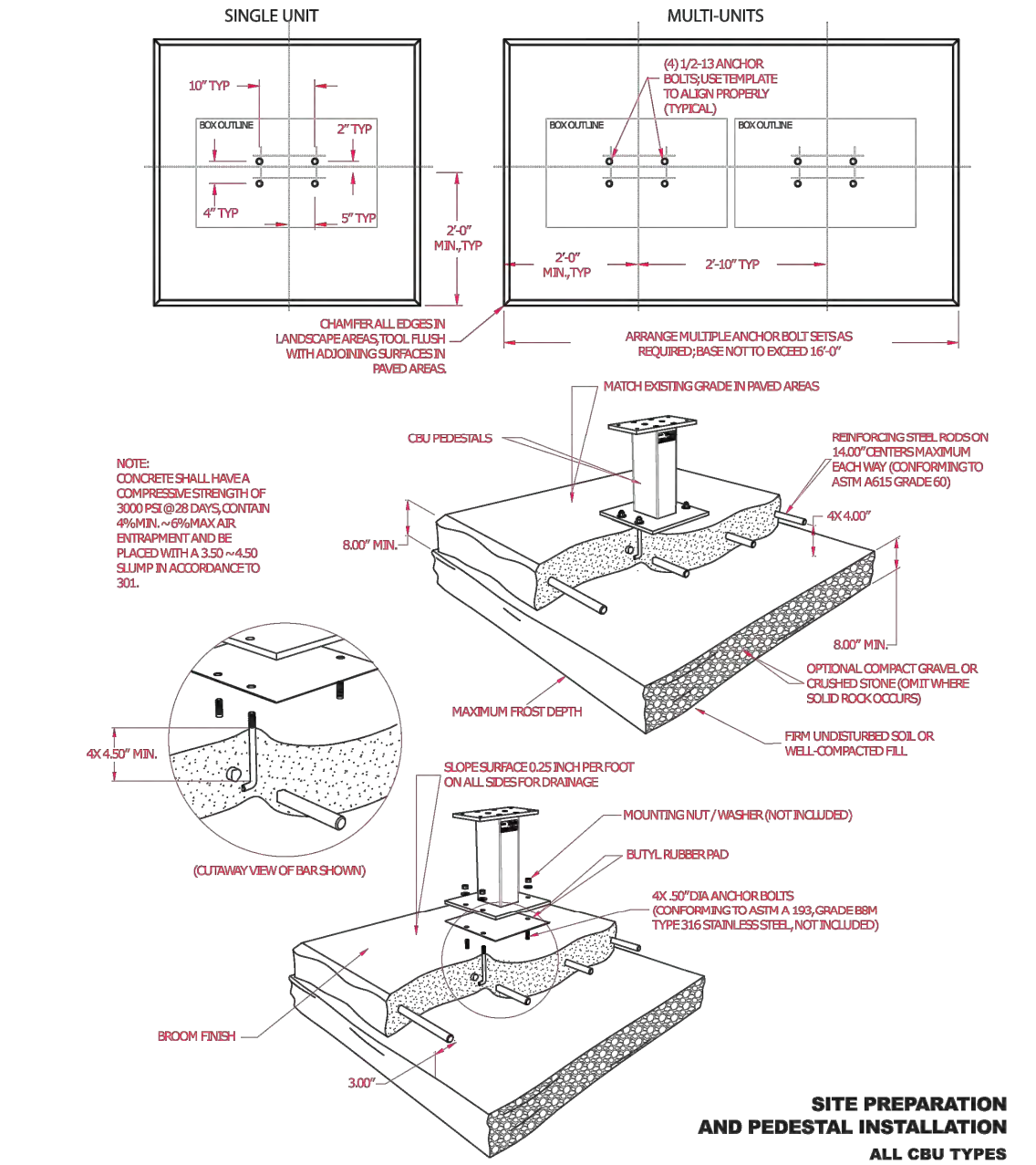


	TYPE I	TYPE II	TYPE III	TYPE IV	TYPE V	TYPE VI
QTY OF TENANT COMPARTMENTS	8	12	16	13	4	8
QTY OF PARCEL COMPARTMENTS	2	1	2	1	2	4
PARCEL COMPARTMENT HEIGHT	10", 13"	10"	10", 13"	10"	10", 13"	10", 13" (3X)

SALSBUURY INDUSTRIES
18300 Central Avenue, Carson, CA 90746-4008
Phone: 1-800-624-5269 Int'l Phone: 323-846-6700
Fax: 1-800-624-5269 Int'l Fax: 323-846-6800
www.mailboxes.com engineering@mailboxes.com

Installation instructions are provided as general guidelines. It is advised that a professional installer be consulted. Salsbury Industries assumes no product assembly or installation liability. Copyright © 2020 Salsbury Industries. All rights reserved. — Part No. 1055282, Rev. 07 Page 2 of 10

U.S.P.S. MAIL KIOSK DETAILS



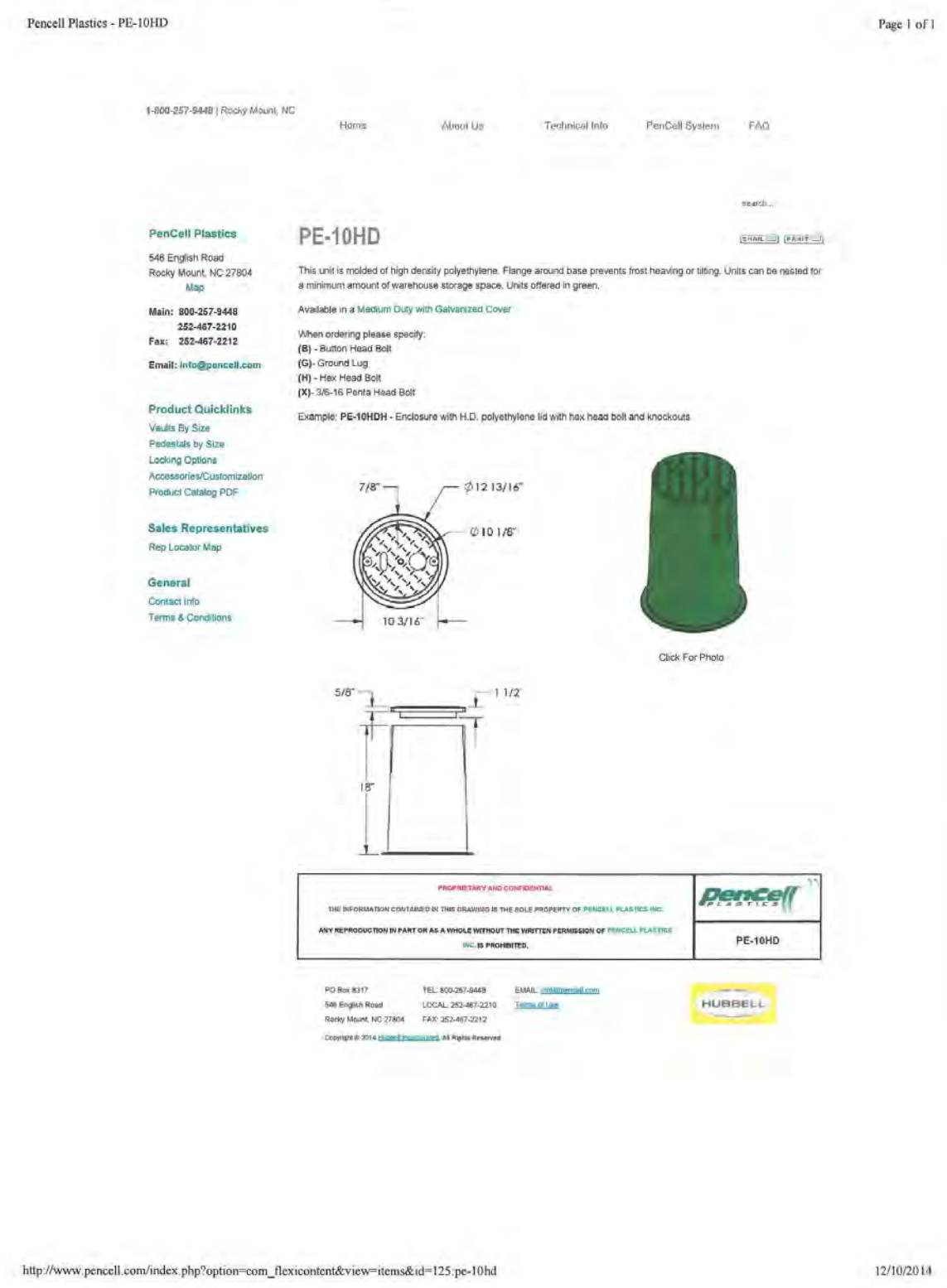
SALSBUURY INDUSTRIES
18300 Central Avenue, Carson, CA 90746-4008
Phone: 1-800-624-5269 Int'l Phone: 323-846-6700
Fax: 1-800-624-5269 Int'l Fax: 323-846-6800
www.mailboxes.com engineering@mailboxes.com

Installation instructions are provided as general guidelines. It is advised that a professional installer be consulted. Salsbury Industries assumes no product assembly or installation liability. Copyright © 2020 Salsbury Industries. All rights reserved. — Part No. 1055282, Rev. 07 Page 3 of 10



Cuivre River Electric
A Touchstone Energy Cooperative

TYPICAL CREC STREET LIGHTING
NOT TO SCALE



PROJECT TITLE

**HARVEST
AT HOPEWELL**

O'Fallon, Missouri

O'FALLON PHASE 2

THE STERLING CO.
ENGINEERS & SURVEYORS
5055 New Baumgartner Road
St. Louis, Missouri 63129
Ph 314-487-0440 Fax 314-487-8944
www.sterling-eng.com
Corporate Certificate of Authority #001348

Date: 02-04-2025
Michael G. Boerding
License No. MO E-28643
Professional Engineer

HARVEST HOPEWELL, LLC
5091 New Baumgartner Road
St. Louis, Missouri 63129

CONSTRUCTION DETAILS

P+Z No. 21-004994
City No. 21-011444
Date: 02-04-2025
Job No. 20-09-327

Page No.

DTL-14

IMP