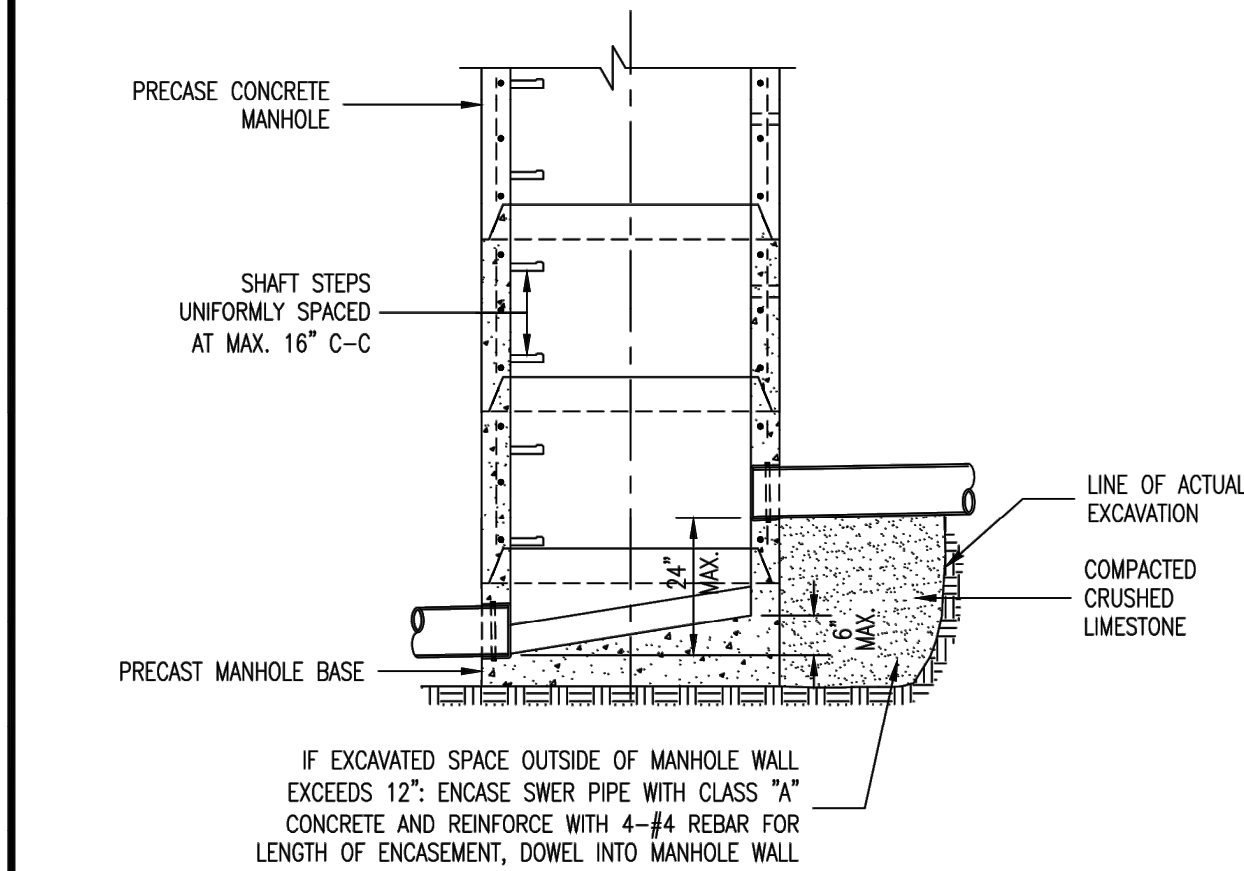


Drawing name: V:\2009\27 Highway N Assembly\Drawings\Engineering\Improvements\9327 IMP DETAILS.dwg, Plotted on: Feb 04, 2025 - 8:26am, Plotted by: jluettkenhaus


ISSUE	REMARKS/DATE
1	2024-08-13, INITIAL SUBMITTAL CITY PH.2
2	2024-11-08, REVISED PER CITY COMMENTS
3	2024-01-03, REVISED PER CITY COMMENTS
4	2024-02-04, REVISED PER CITY COMMENTS



SECTION OF MANHOLE	DIMENSION
TOP TRANSITION	UPPER 26 1/2" DIA. LOWER 42" DIA.
BOTTOM SECTION	8" DIA. PIPE 42" DIA.
BOTTOM SECTION	10" THRU 36" DIA. PIPE 48" DIA.
BOTTOM SECTION	42" DIA. PIPE 60" DIA.

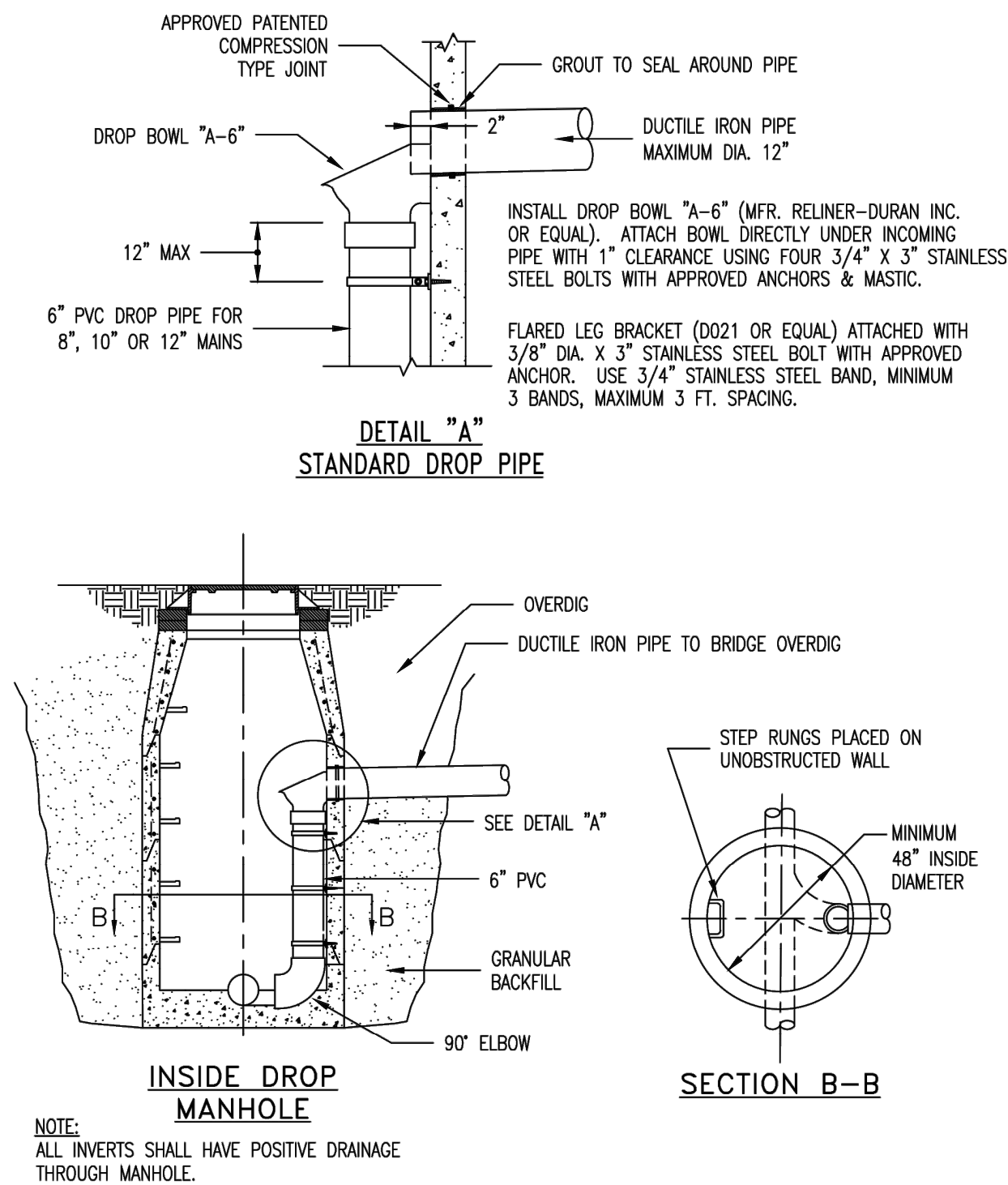
SEE A.S.T.M. C-478 FOR MINIMUM STEEL REQUIREMENTS.


- NOTES:
1. ALL INVERTS SHALL HAVE POSITIVE DRAINAGE THROUGH MANHOLE.
 2. BRICK SHALL NOT BE USED ON MANHOLES.

**Duckett Creek Sanitary District**

INSIDE FOULWATER DROP MANHOLE (SWEEP INLET)

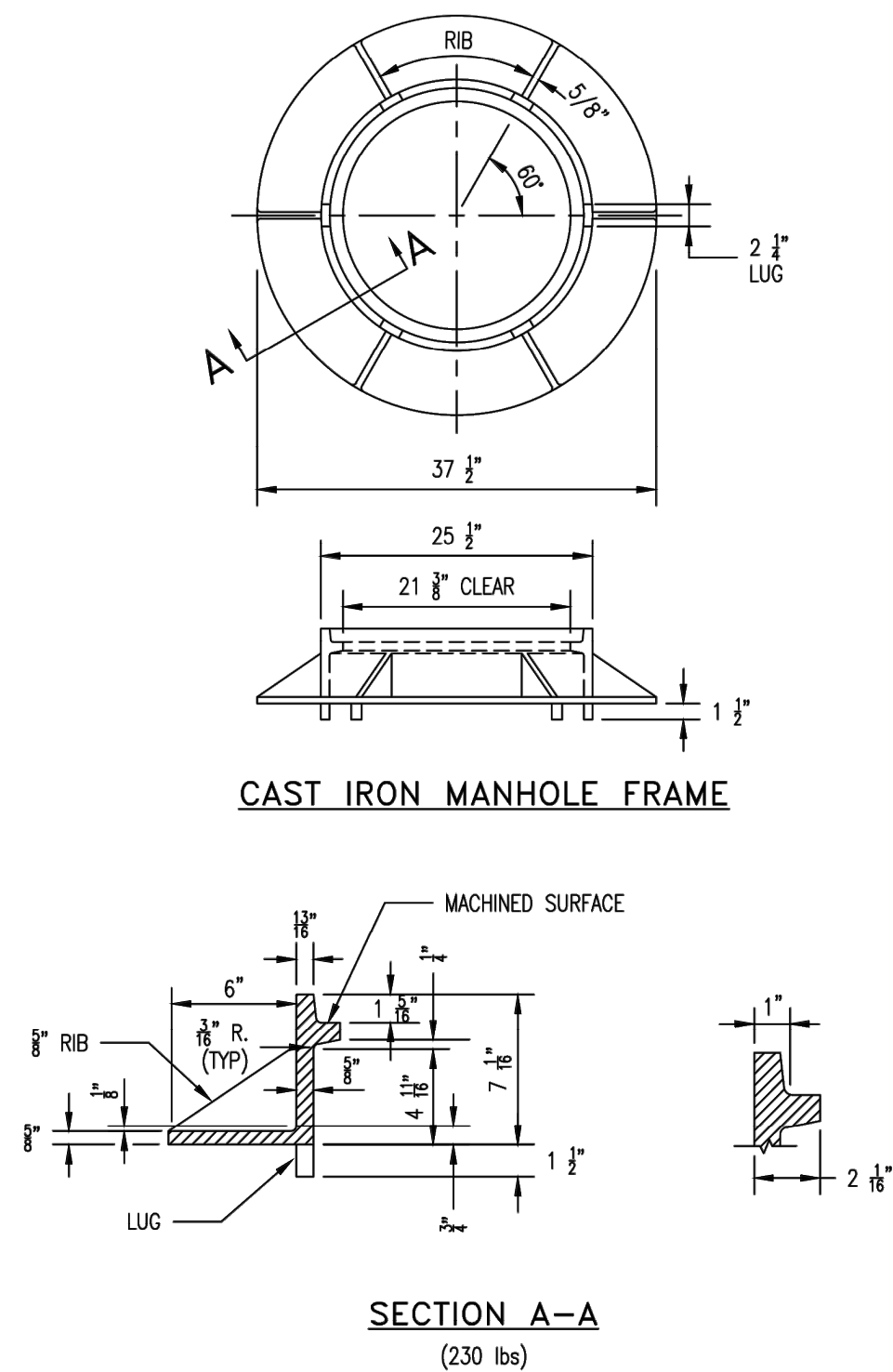
Own By: BSM App By: KA Detail No. 9
Ckd By: MDOB Date: DEC. 2015




**Duckett Creek Sanitary District**

INSIDE DROP MANHOLE

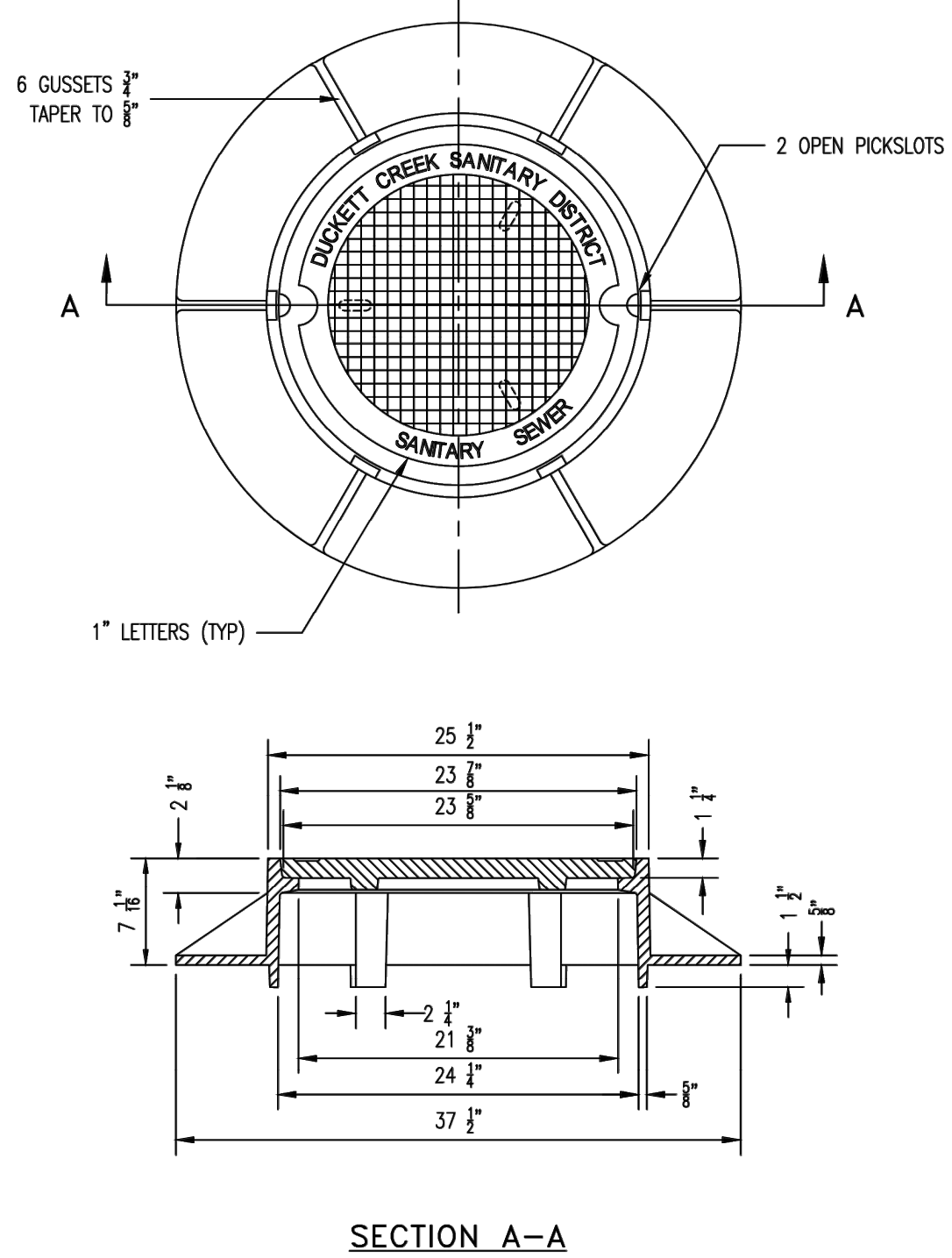
Own By: MSM App By: KA Detail No. 10
Ckd By: MDOB Date: DEC. 2015




**Duckett Creek Sanitary District**

CAST IRON MANHOLE FRAME

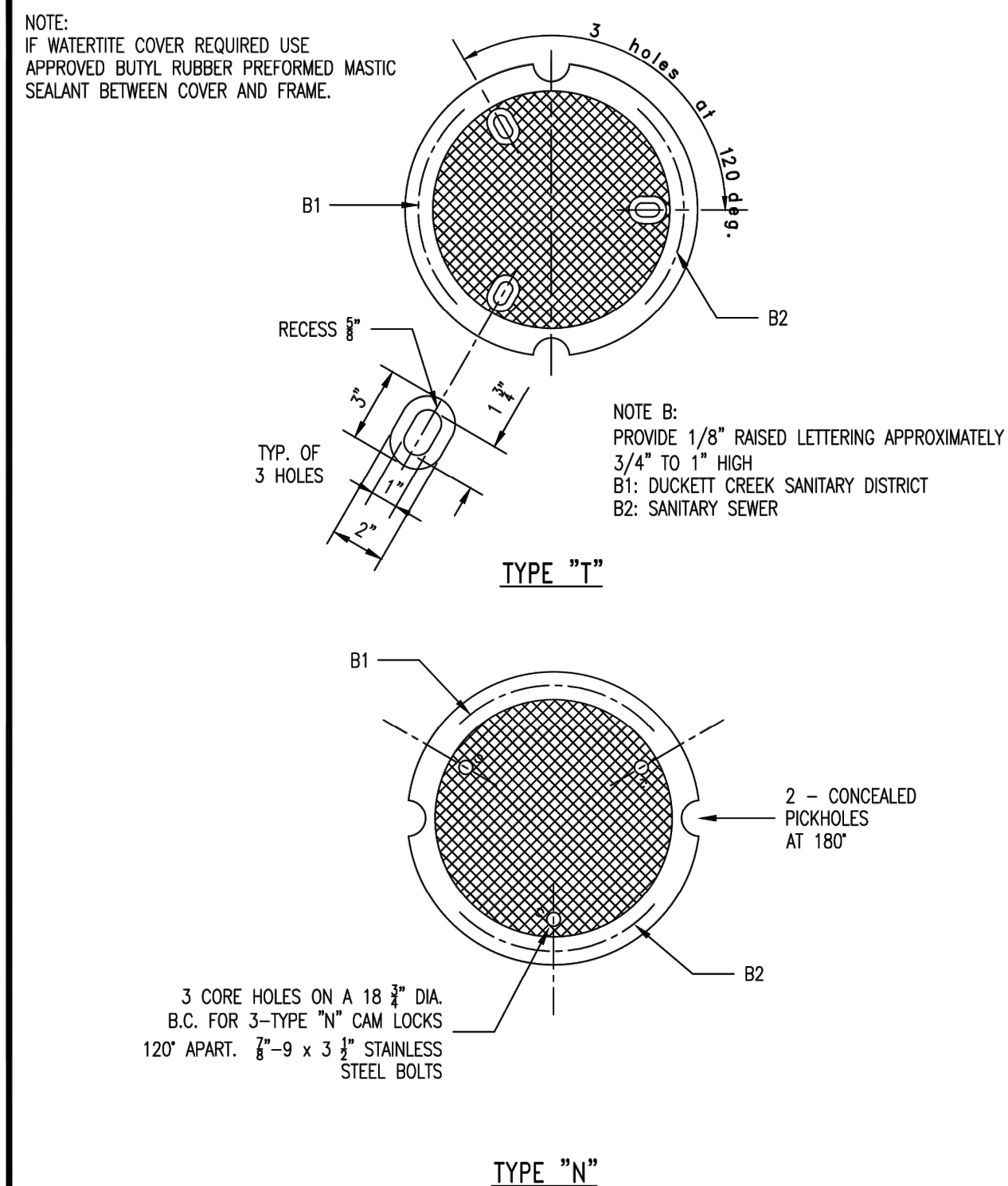
Own By: BSM App By: KLA Detail No. 11
Ckd By: MDOB Date: DEC. 2015




**Duckett Creek Sanitary District**

MANHOLE FRAME AND COVER

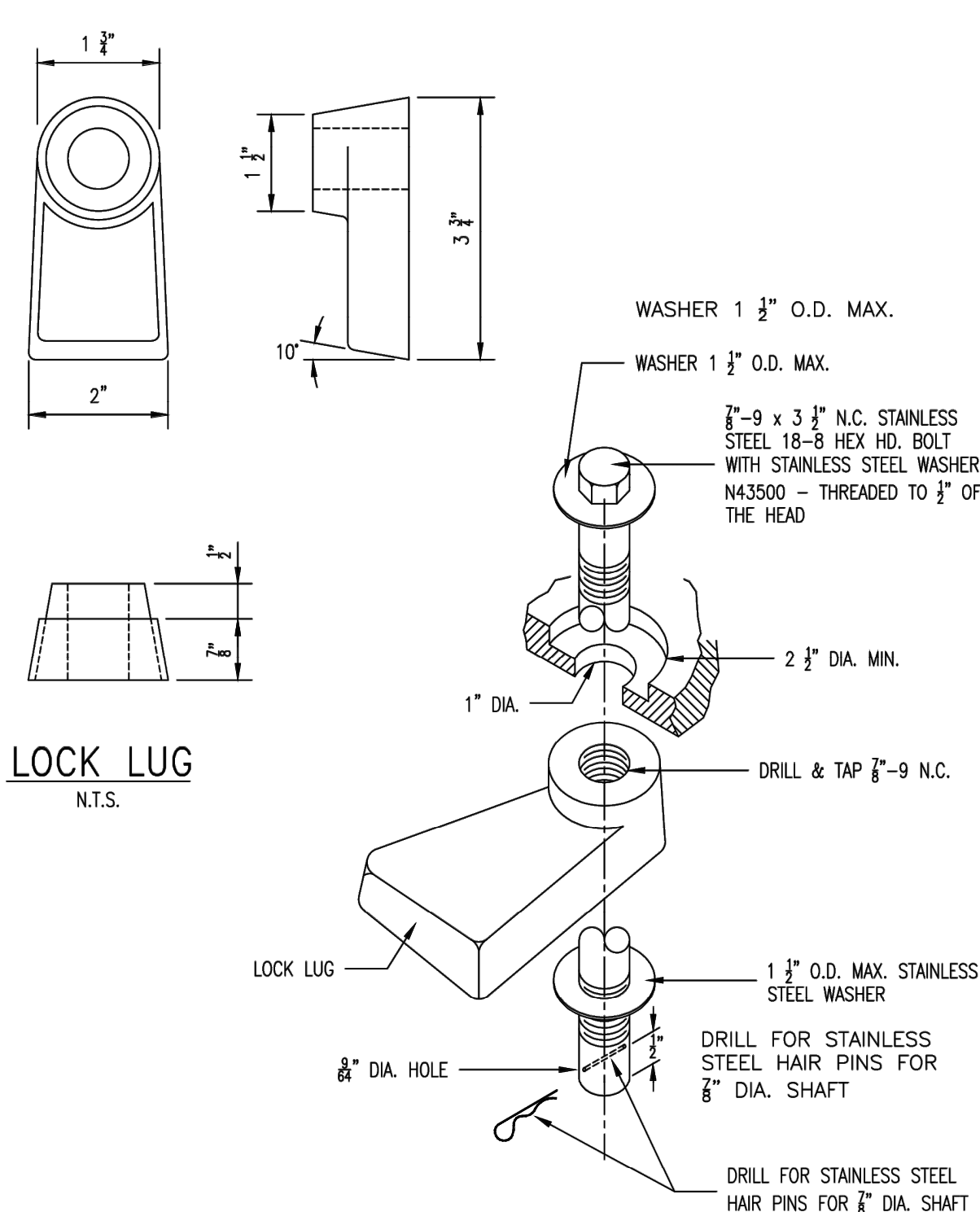
Own By: BSM App By: KLA Detail No. 12
Ckd By: MDOB Date: DEC. 2015




**Duckett Creek Sanitary District**

CAST IRON MANHOLE COVERS (LOCK TYPE)

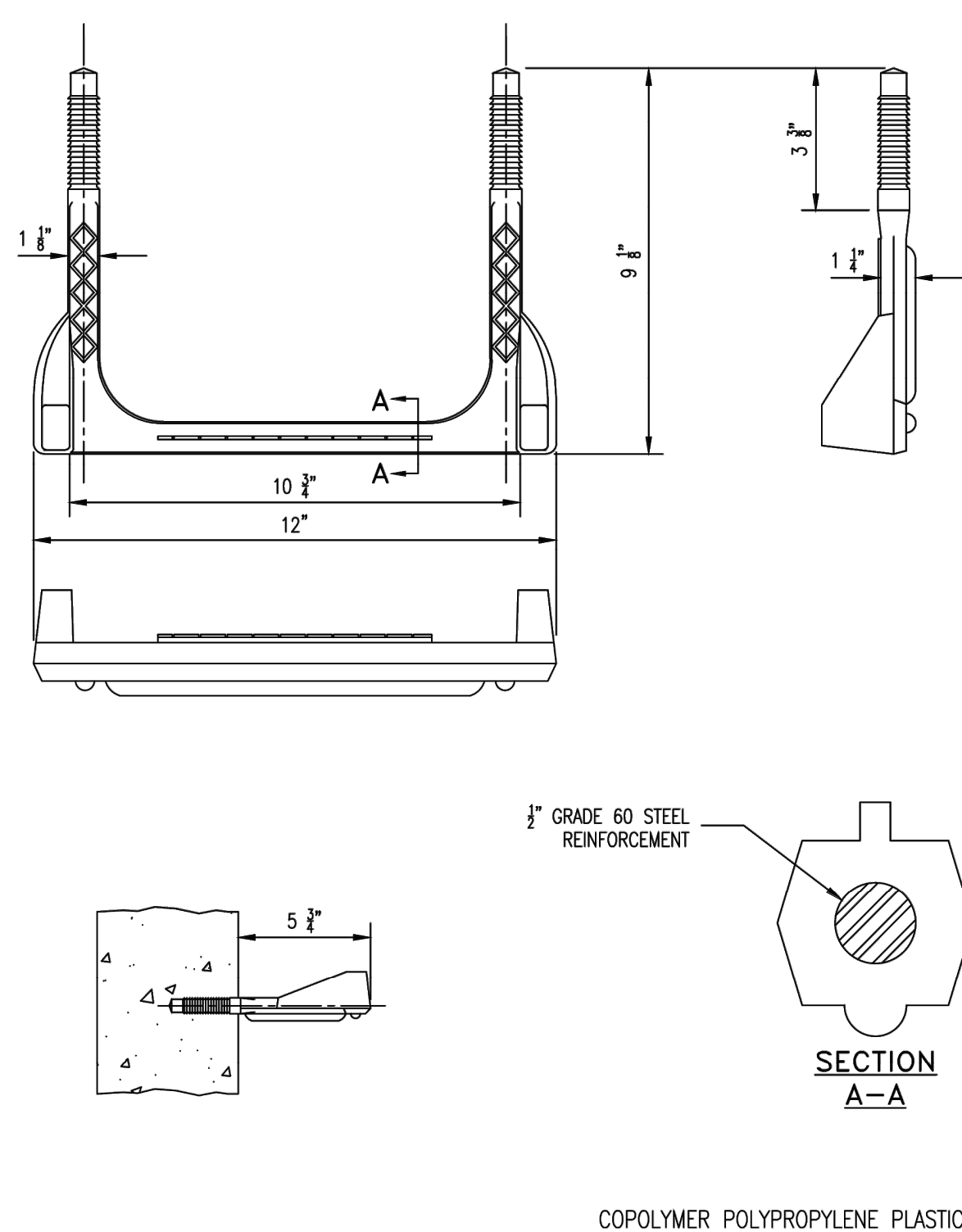
Own By: BSM App By: KLA Detail No. 14
Ckd By: MDOB Date: DEC. 2015




**Duckett Creek Sanitary District**

LOCKING DEVICE FOR TYPE "N" LOCK TYPEMAN HOLE COVER

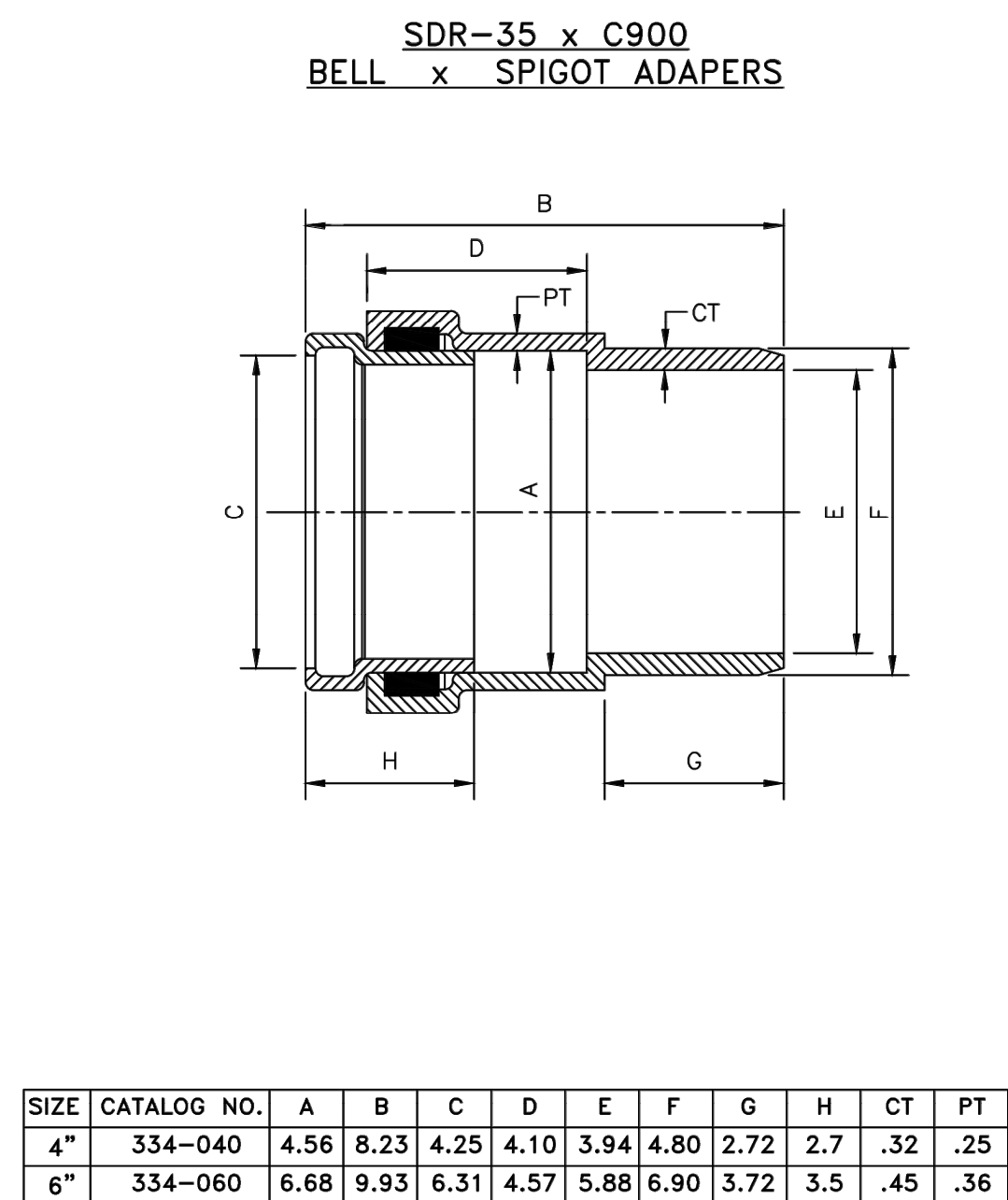
Own By: BSM App By: KLA Detail No. 16
Ckd By: MDOB Date: DEC. 2015




**Duckett Creek Sanitary District**

MANHOLE STEP FOR PRECAST MANHOLE

Own By: BSM App By: KA Detail No. 18
Ckd By: MDOB Date: DEC. 2015



**Duckett Creek Sanitary District**

SDR-35 x C900 BELL AND SPIGOT ADAPTORS

Own By: BSM App By: KA Detail No. 19A
Ckd By: MDOB Date: DEC. 2015

PROJECT TITLE
HARVEST AT HOPEWELL
O'Fallon, Missouri
O'FALLON PHASE 2

THE **STERLING** CO.
ENGINEERS & SURVEYORS
5055 New Baumgartner Road
St. Louis, Missouri 63129
Ph 314-487-0440 Fax 314-487-8944
www.sterling-eng-sur.com
Corporate Certificate of Authority #001348



Date: 02-04-2025
Michael G. Boerding
License No. MO E-28643
Professional Engineer

HARVEST HOPEWELL, LLC
5091 New Baumgartner Road
St. Louis, Missouri 63129

DCSD SANITARY DETAILS

P+Z No. 21-004994
City No. 21-011444
Date: 02-04-2025
Job No. 20-09-327

Page No.

DTL-4

IMP