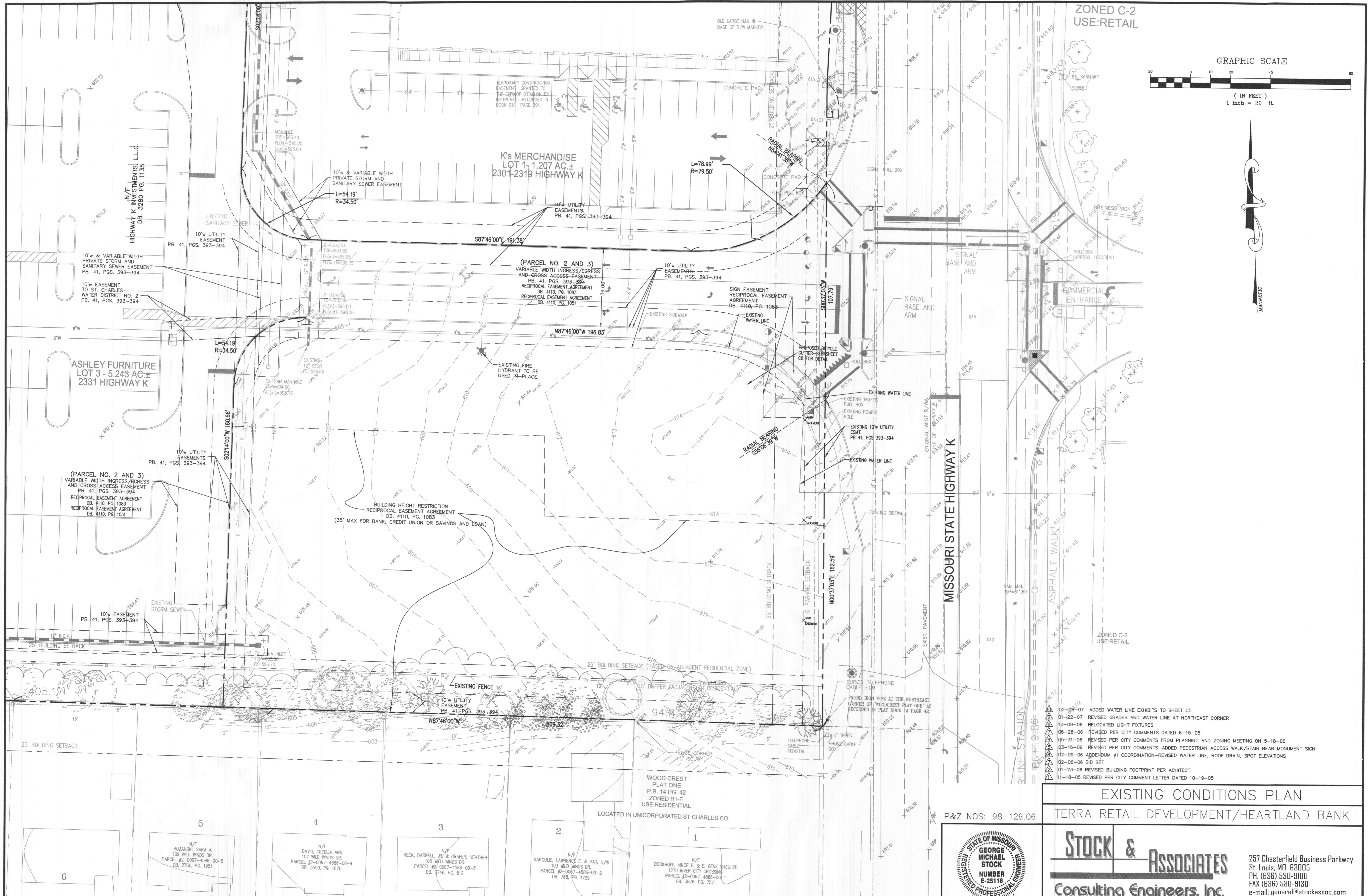
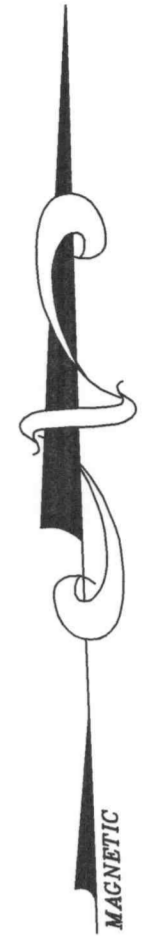
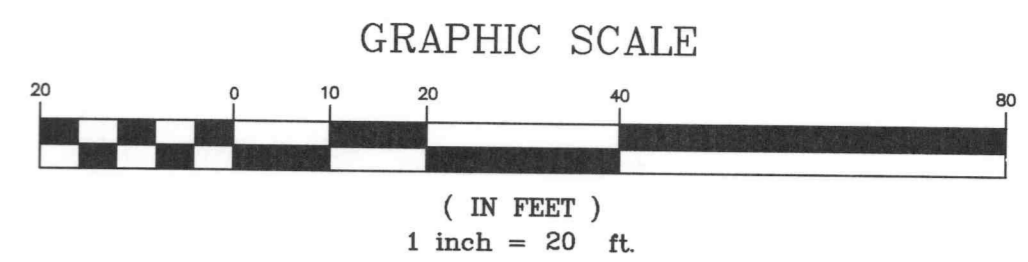


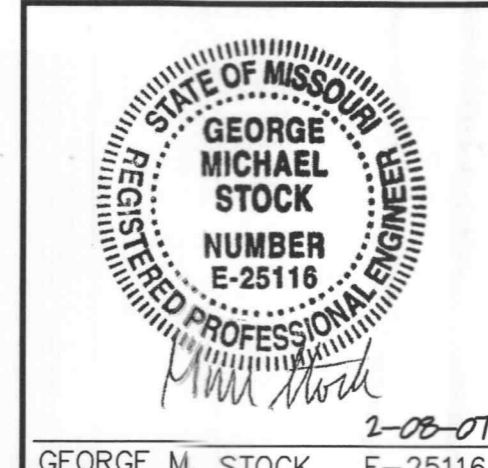
ZONED C-2
USE: RETAIL



- 02-08-07 ADDED WATER LINE EXHIBITS TO SHEET C5
- 01-22-07 REVISED GRADES AND WATER LINE AT NORTHEAST CORNER
- 10-09-06 RELOCATED LIGHT FIXTURES
- 06-28-06 REVISED PER CITY COMMENTS DATED 6-15-06
- 05-31-06 REVISED PER CITY COMMENTS FROM PLANNING AND ZONING MEETING ON 5-18-06
- 03-16-06 REVISED PER CITY COMMENTS-ADDED PEDESTRIAN ACCESS WALK/STAIR NEAR MONUMENT SIGN
- 02-09-06 ADDENDUM #1 COORDINATION-REVISED WATER LINE, ROOF DRAIN, SPOT ELEVATIONS
- 02-06-06 BID SET
- 01-23-06 REVISED BUILDING FOOTPRINT PER ARCHITECT
- 11-18-05 REVISED PER CITY COMMENT LETTER DATED 10-19-05

EXISTING CONDITIONS PLAN
TERRA RETAIL DEVELOPMENT/HEARTLAND BANK

P&Z NOS: 98-126.06



STOCK & ASSOCIATES
Consulting Engineers, Inc.

257 Chesterfield Business Parkway
St. Louis, MO 63005
PH. (636) 530-9100
FAX (636) 530-9130
e-mail: general@stockassoc.com
Web: www.stockassoc.com

DRAWN BY: J.P.P. DATE: 9/27/05 CHECKED BY: G.M.S. DATE: 9/27/05 JOB NUMBER: 205-3584 SHEET: C3 of 12