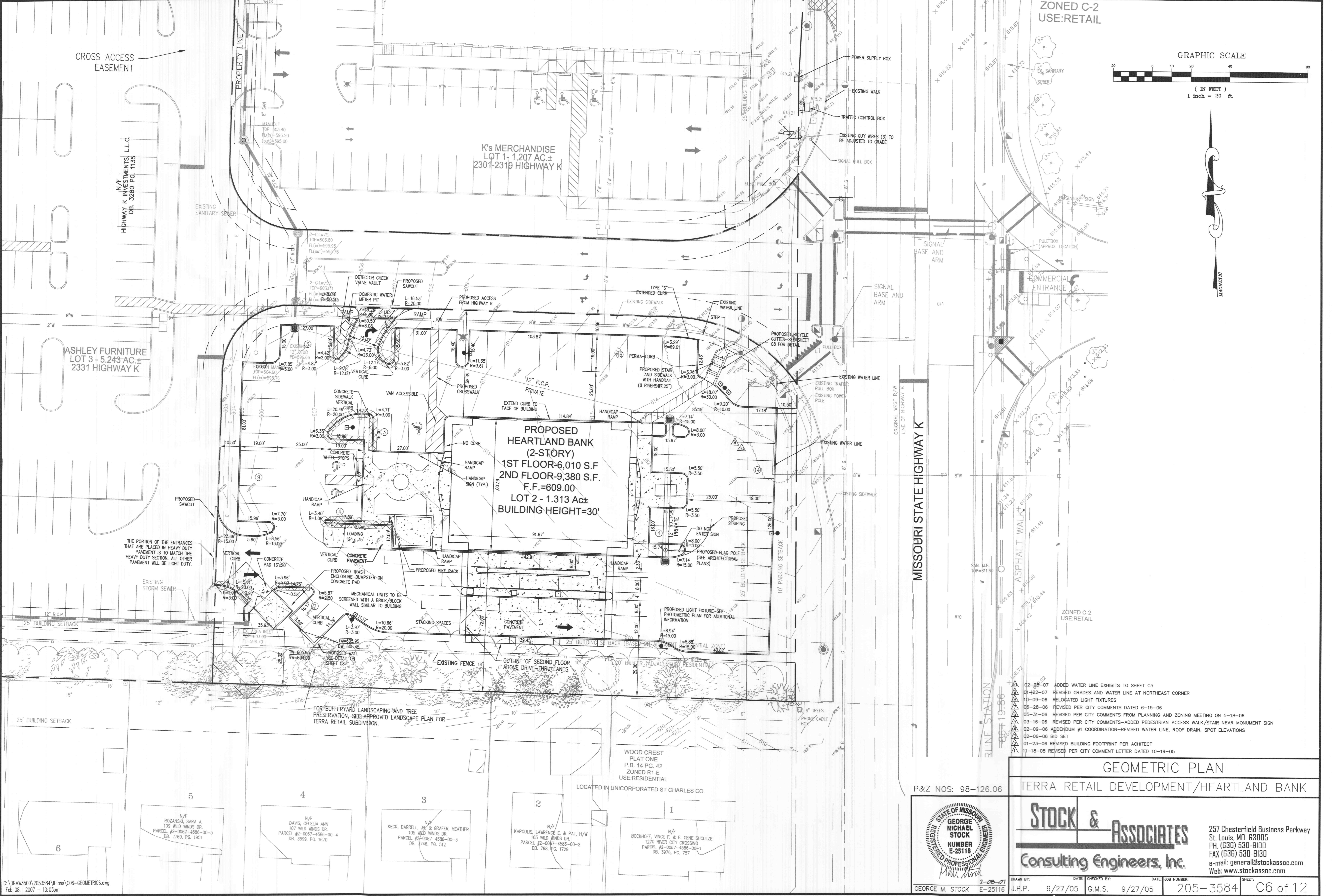
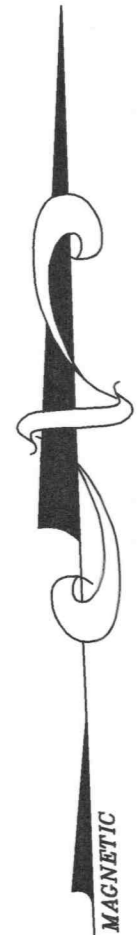
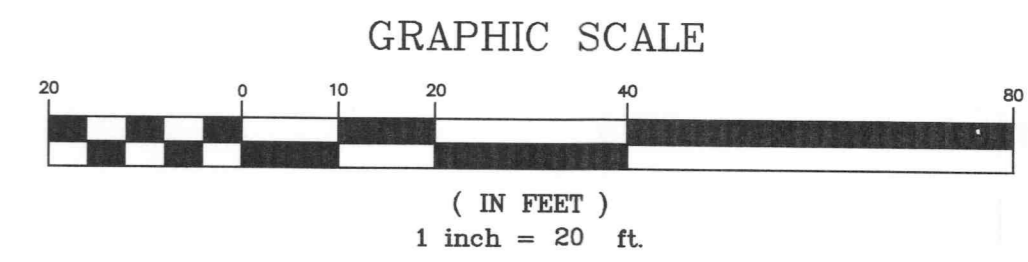


ZONED C-2
USE: RETAIL



HIGHWAY K INVESTMENTS, L.L.C.
DB. 3280 PG. 1135

ASHLEY FURNITURE
LOT 3 - 5.243 AC ±
2331 HIGHWAY K

K's MERCHANDISE
LOT 1, 1.207 AC ±
2301-2319 HIGHWAY K

PROPOSED
HEARTLAND BANK
(2-STORY)
1ST FLOOR-6,010 S.F.
2ND FLOOR-9,380 S.F.
F.F.=609.00
LOT 2 - 1.313 AC ±
BUILDING HEIGHT=30'

MISSOURI STATE HIGHWAY K

ZONED C-2
USE: RETAIL

THE PORTION OF THE ENTRANCES
THAT ARE PLACED IN HEAVY DUTY
PAVEMENT IS TO MATCH THE
HEAVY DUTY SECTION. ALL OTHER
PAVEMENT WILL BE LIGHT DUTY.

FOR BUFFERYARD LANDSCAPING AND TREE
PRESERVATION, SEE APPROVED LANDSCAPE PLAN FOR
TERRA RETAIL SUBDIVISION.

WOOD CREST
PLAT ONE
P.B. 14 PG. 42
ZONED R1-E
USE: RESIDENTIAL

LOCATED IN UNINCORPORATED ST CHARLES CO.

N/F
ROZANSKI, SARA A.
109 WILD WINDS DR.
PARCEL #2-0067-4586-00-5
DB. 2760, PG. 1951

N/F
DAVIS, CECELIA ANN
107 WILD WINDS DR.
PARCEL #2-0067-4586-00-4
DB. 3599, PG. 1670

N/F
KECK, DARRELL JR & GRAFER, HEATHER
105 WILD WINDS DR.
PARCEL #2-0067-4586-00-3
DB. 3746, PG. 512

N/F
KAPOLIS, LAWRENCE E & PAT, H/W
103 WILD WINDS DR.
PARCEL #2-0067-4586-00-2
DB. 768, PG. 1729

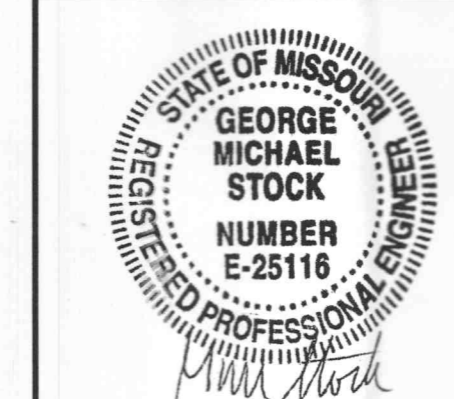
N/F
BOOKHOFF, VINCE F. & E. GENE SHOULZE
1270 RIVER CITY CROSSING
PARCEL #2-0067-4586-00-1
DB. 3976, PG. 757

- 02-08-07 ADDED WATER LINE EXHIBITS TO SHEET C5
- 01-12-07 REVISED GRADES AND WATER LINE AT NORTHEAST CORNER
- 10-09-06 RELOCATED LIGHT FIXTURES
- 06-28-06 REVISED PER CITY COMMENTS DATED 6-15-06
- 05-31-06 REVISED PER CITY COMMENTS FROM PLANNING AND ZONING MEETING ON 5-18-06
- 03-16-06 REVISED PER CITY COMMENTS-ADDED PEDESTRIAN ACCESS WALK/STAIR NEAR MONUMENT SIGN
- 02-09-06 AGGENDUM #1 COORDINATION-REVISED WATER LINE, ROOF DRAIN, SPOT ELEVATIONS
- 02-06-06 BID SET
- 01-23-06 REVISED BUILDING FOOTPRINT PER ARCHITECT
- 11-18-05 REVISED PER CITY COMMENT LETTER DATED 10-19-05

GEOMETRIC PLAN

TERRA RETAIL DEVELOPMENT/HEARTLAND BANK

P&Z NOS: 98-126.06



STOCK & ASSOCIATES
Consulting Engineers, Inc.

257 Chesterfield Business Parkway
St. Louis, MO 63005
PH. (636) 530-9100
FAX (636) 530-9130
e-mail: general@stockassoc.com
Web: www.stockassoc.com