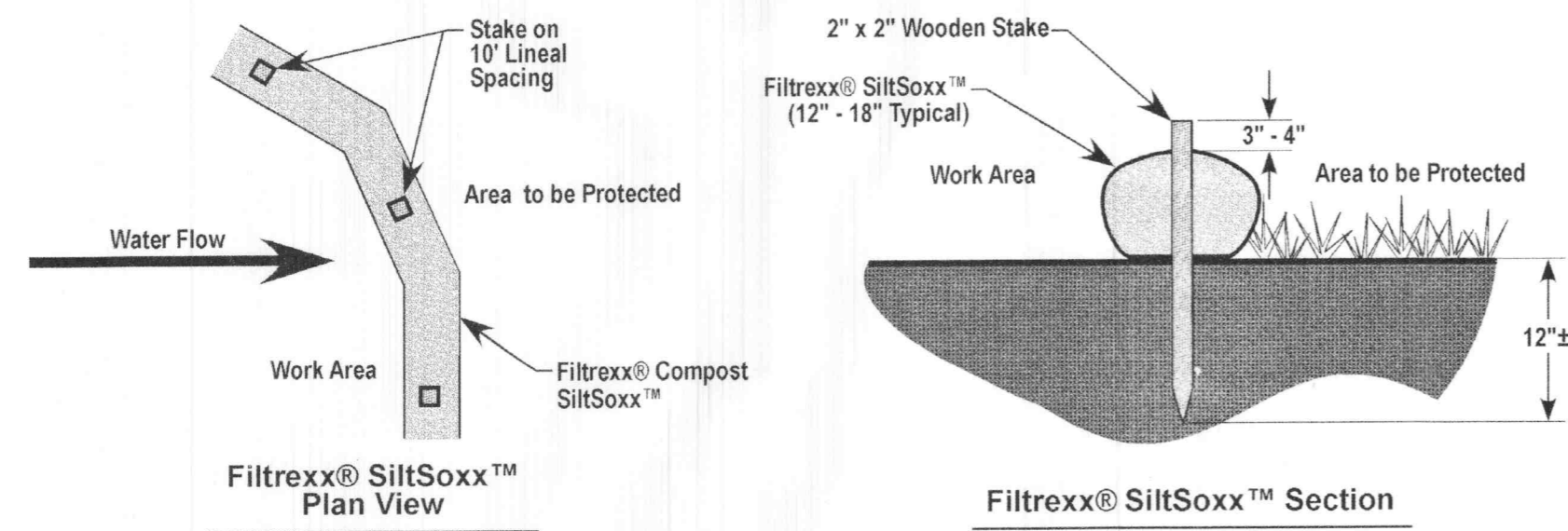
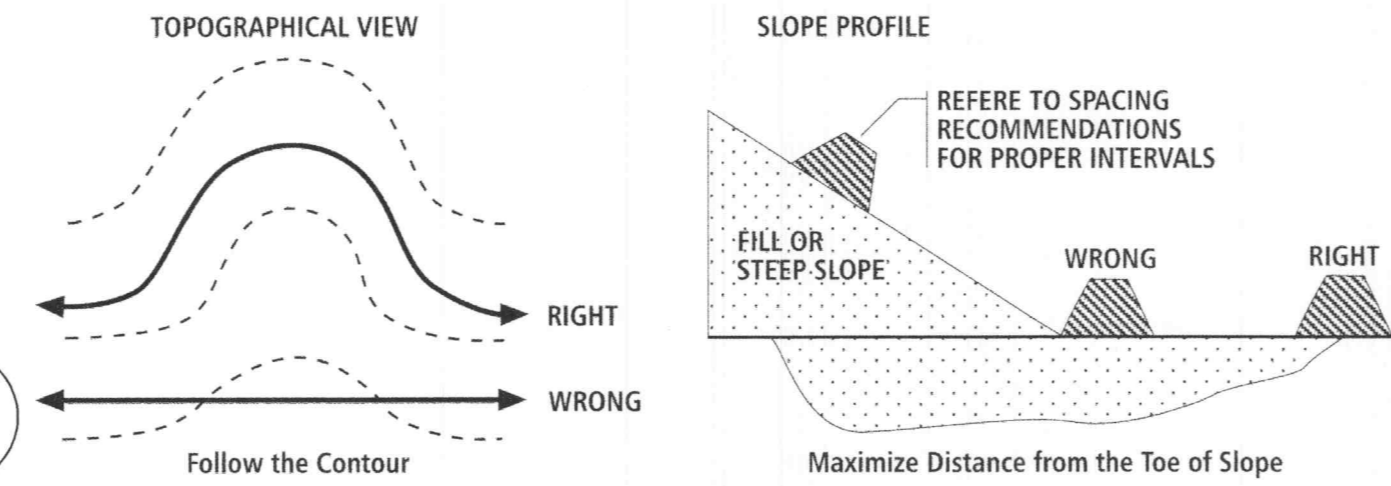


Filtrex® SiltSox™ Details

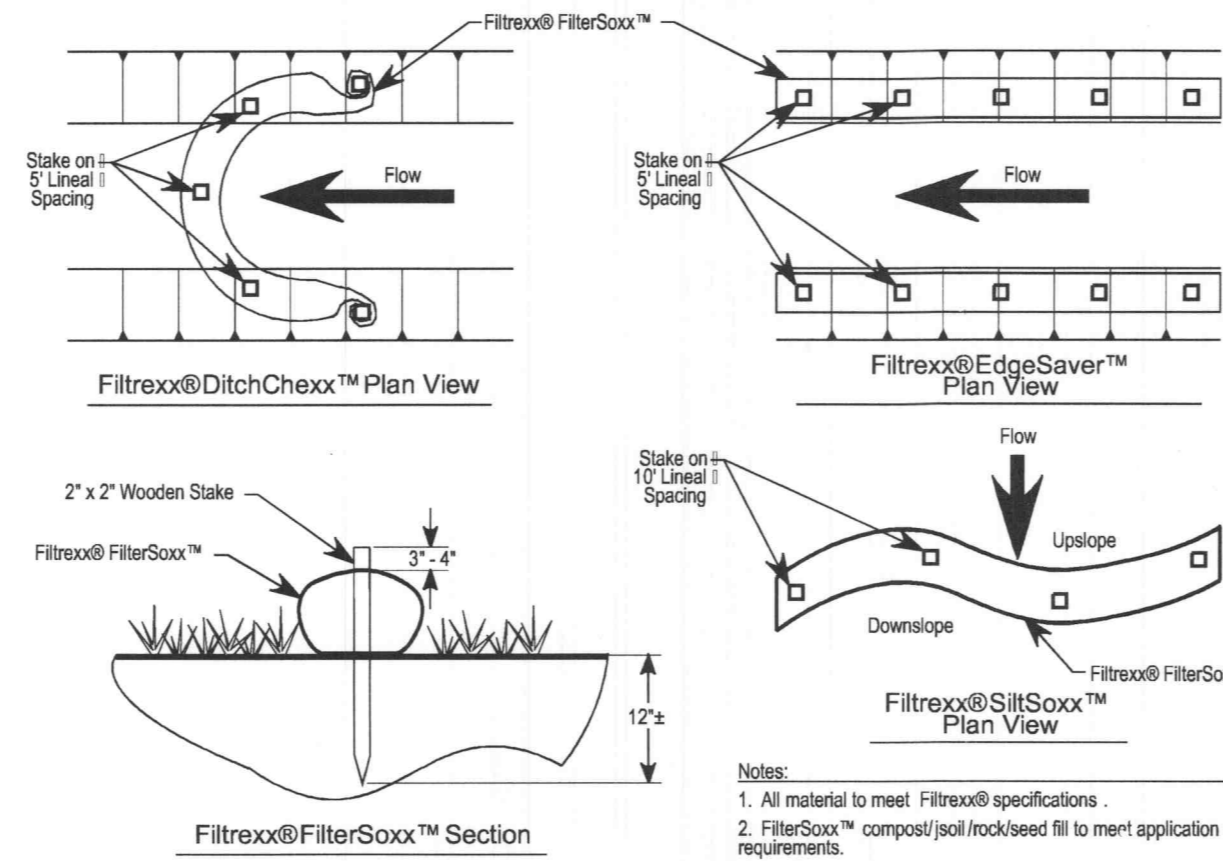


- Notes:**
1. All material to meet Filtrex® specifications.
 2. SiltSox™ compost/soil/rock/seed fill to meet application requirements.
 3. SiltSox™ depicted is for minimum slopes. Greater slopes may require larger socks per the Engineer.
 4. Compost material to be dispersed on site, as determined by Engineer.

17



Filtrex® FilterSox™ Staking Details

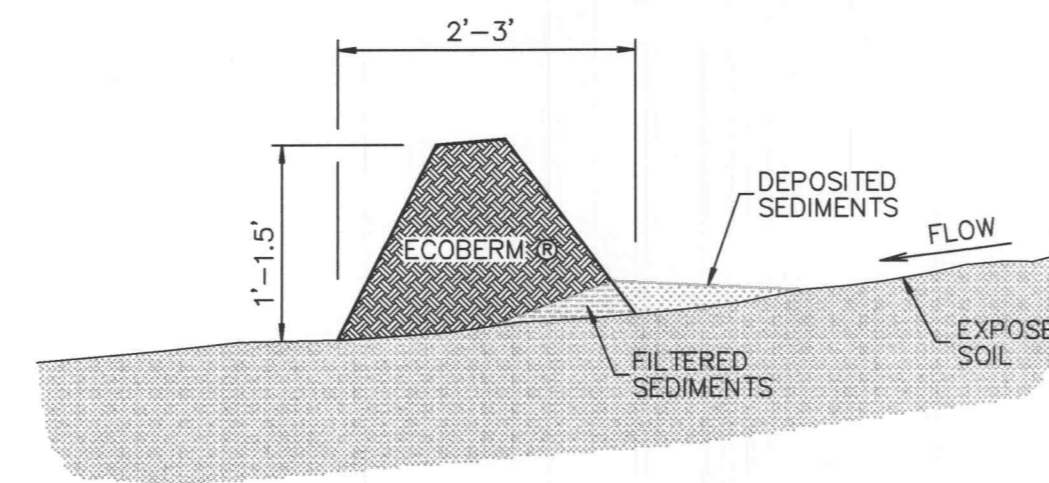


- Notes:**
1. All material to meet Filtrex® specifications.
 2. FilterSox™ compost/soil/rock/seed fill to meet application requirements.
 3. Compost material to be dispersed on site, as determined by Engineer.

18

INSTALLATION NOTES:

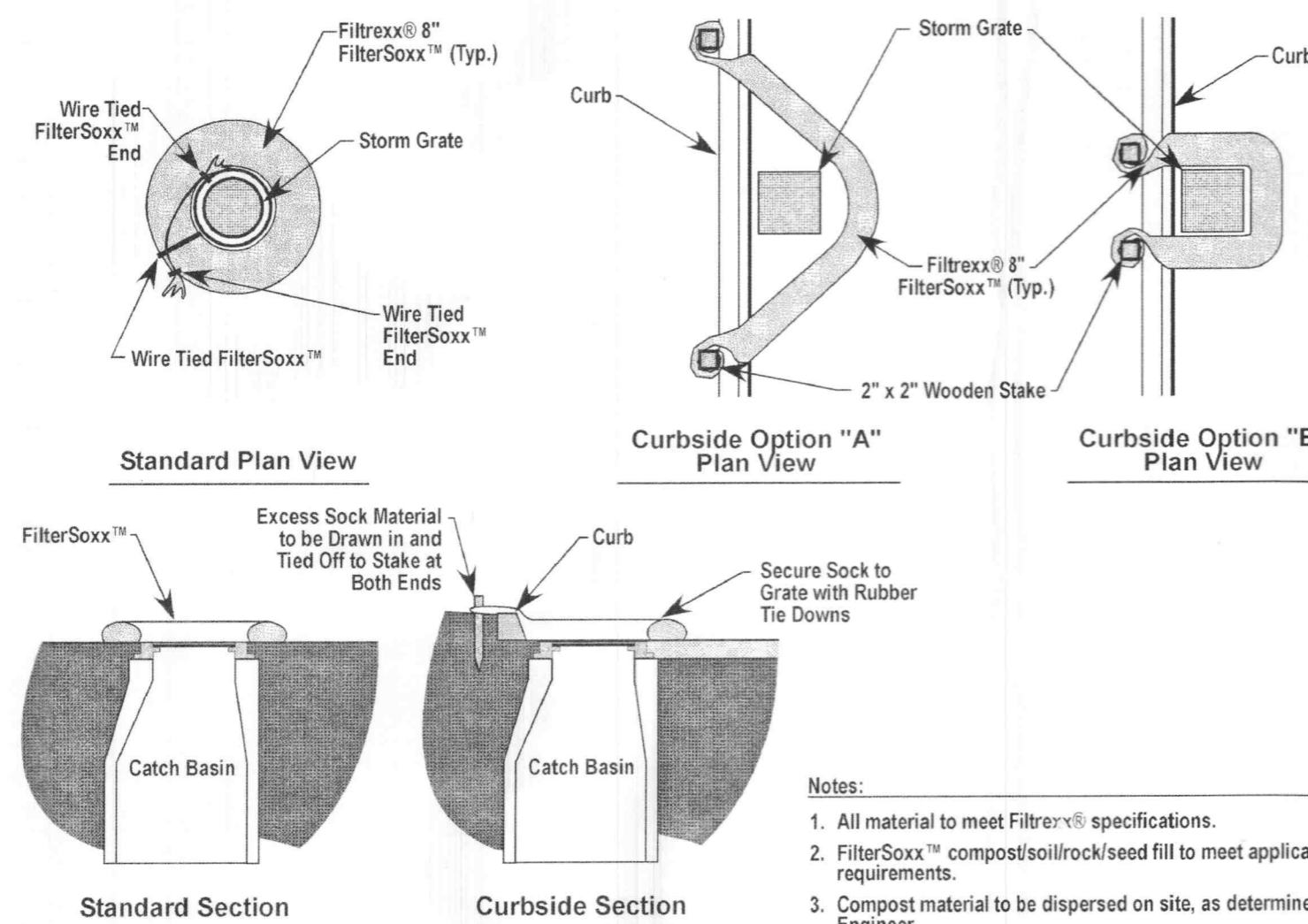
1. ECOBERM SHALL BE INSTALLED BY A REVIUS CERTIFIED INSTALLER AND CONSTRUCTED USING FILTERING MATERIAL MEETING THE REVIUS SPECIFICATIONS FOR PARTICLE SIZE AND COMPOST QUALITY.
2. ECOBERM SHOULD BE PLACED ALONG A LEVEL CONTOUR SO THAT IT WILL NOT CHANNEL RUNOFF AND CREATE CONCENTRATED FLOWS.



CROSS-SECTION VIEW
NOT TO SCALE

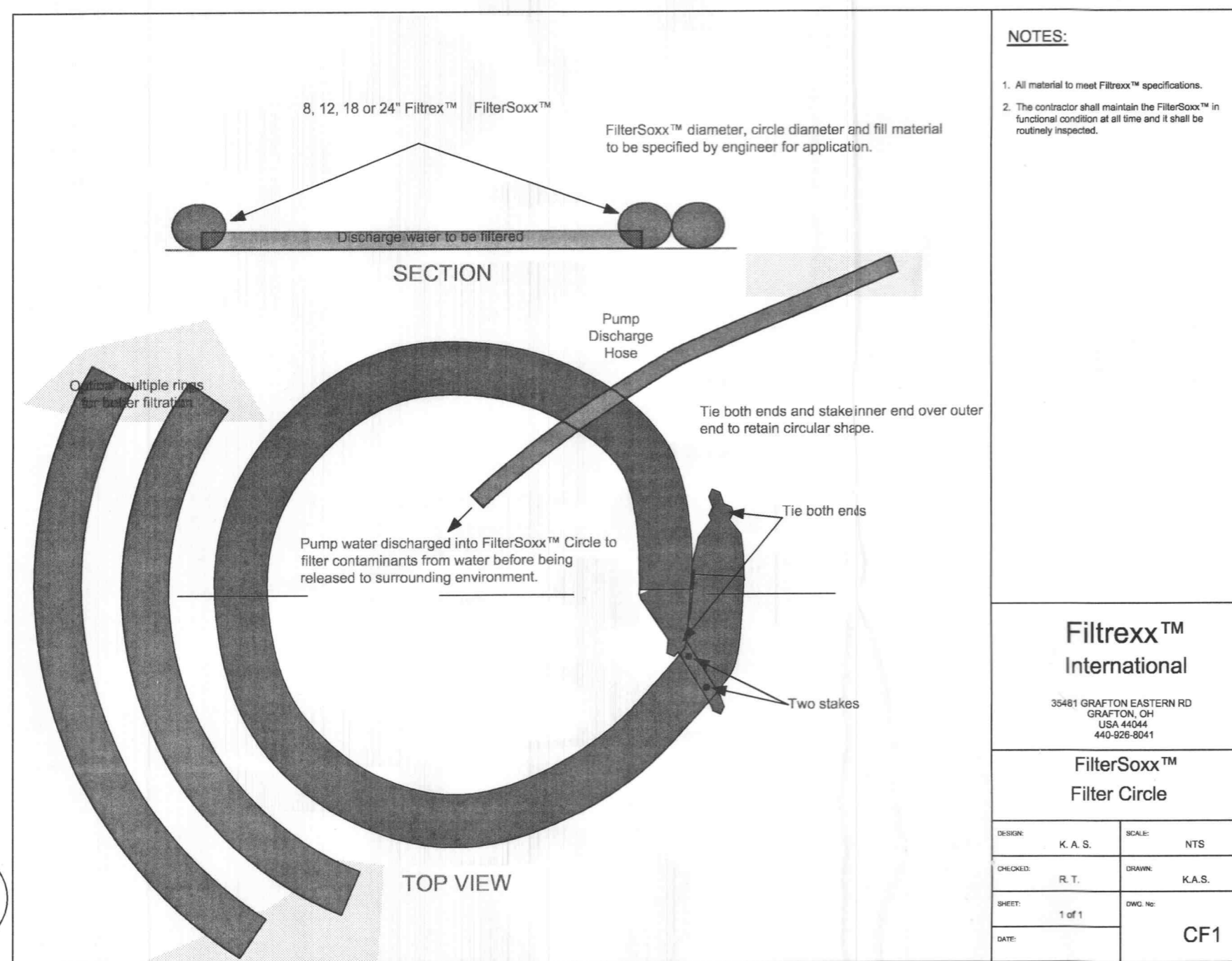
19

Filtrex® Inlet Protection Details



- Notes:**
1. All material to meet Filtrex® specifications.
 2. FilterSox™ compost/soil/rock/seed fill to meet application requirements.
 3. Compost material to be dispersed on site, as determined by Engineer.

15



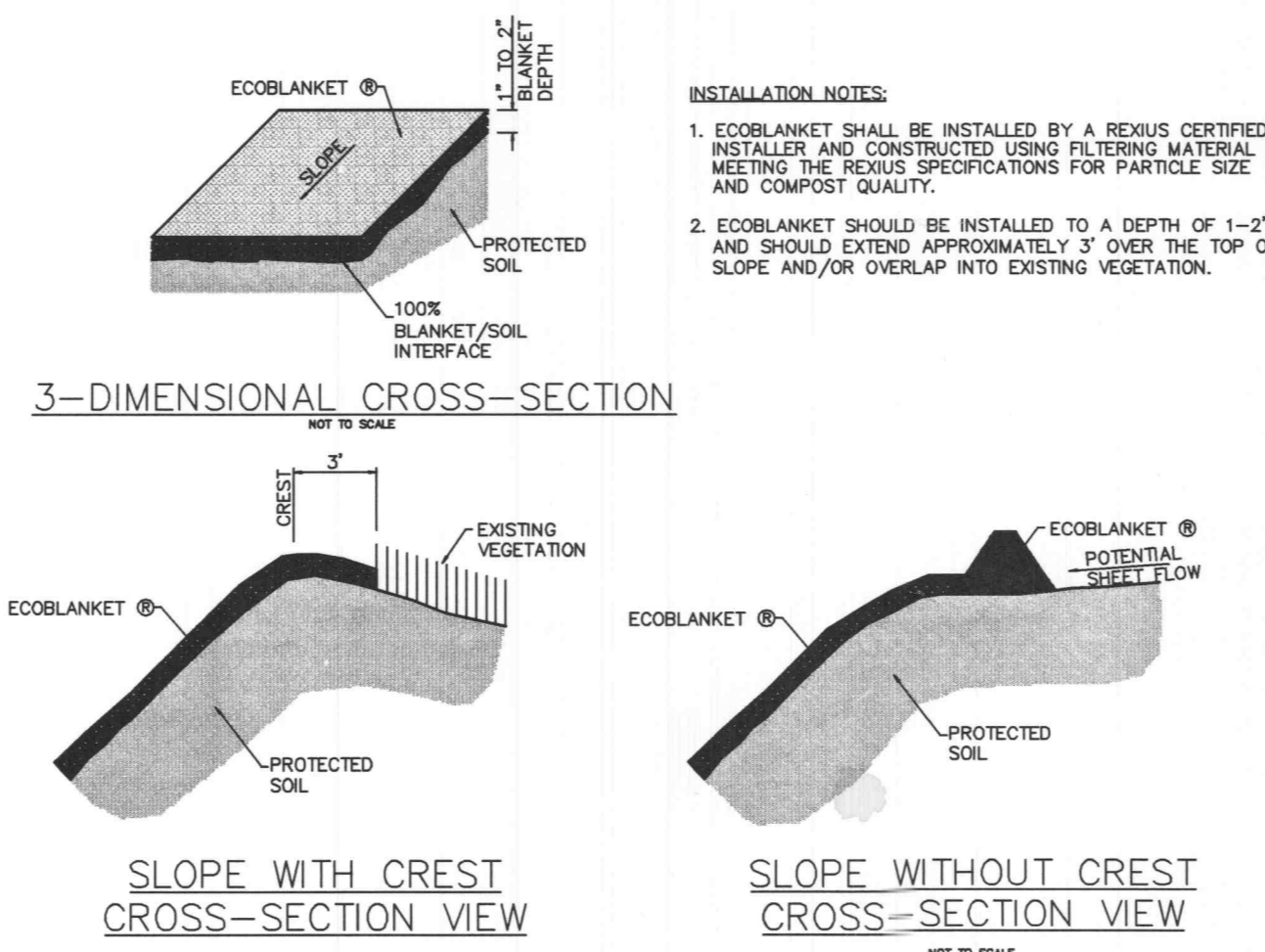
- NOTES:**
1. All material to meet Filtrex® specifications.
 2. The contractor shall maintain the FilterSox™ in functional condition at all time and it shall be routinely inspected.

Filtrex™ International
35481 GRAFTON EASTERN RD
GRAFTON, OH
USA 43044
419-228-8011

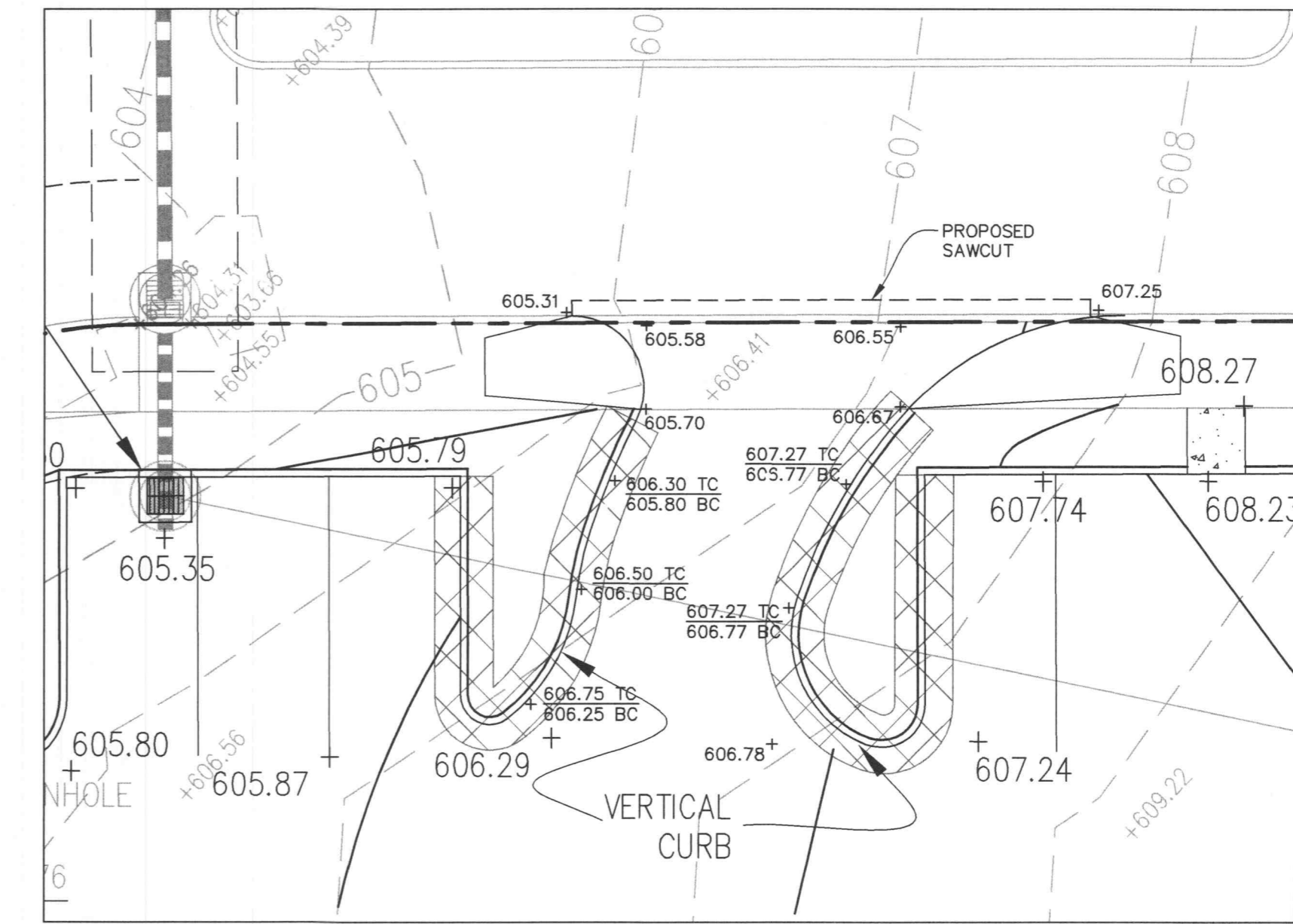
DESIGN	K.A.S.	SCALE	NTS
DRAWN	R.T.	DATE	K.A.S.
CHECK	T.M.F.	REV. NO.	
DATE			CF1

16

20



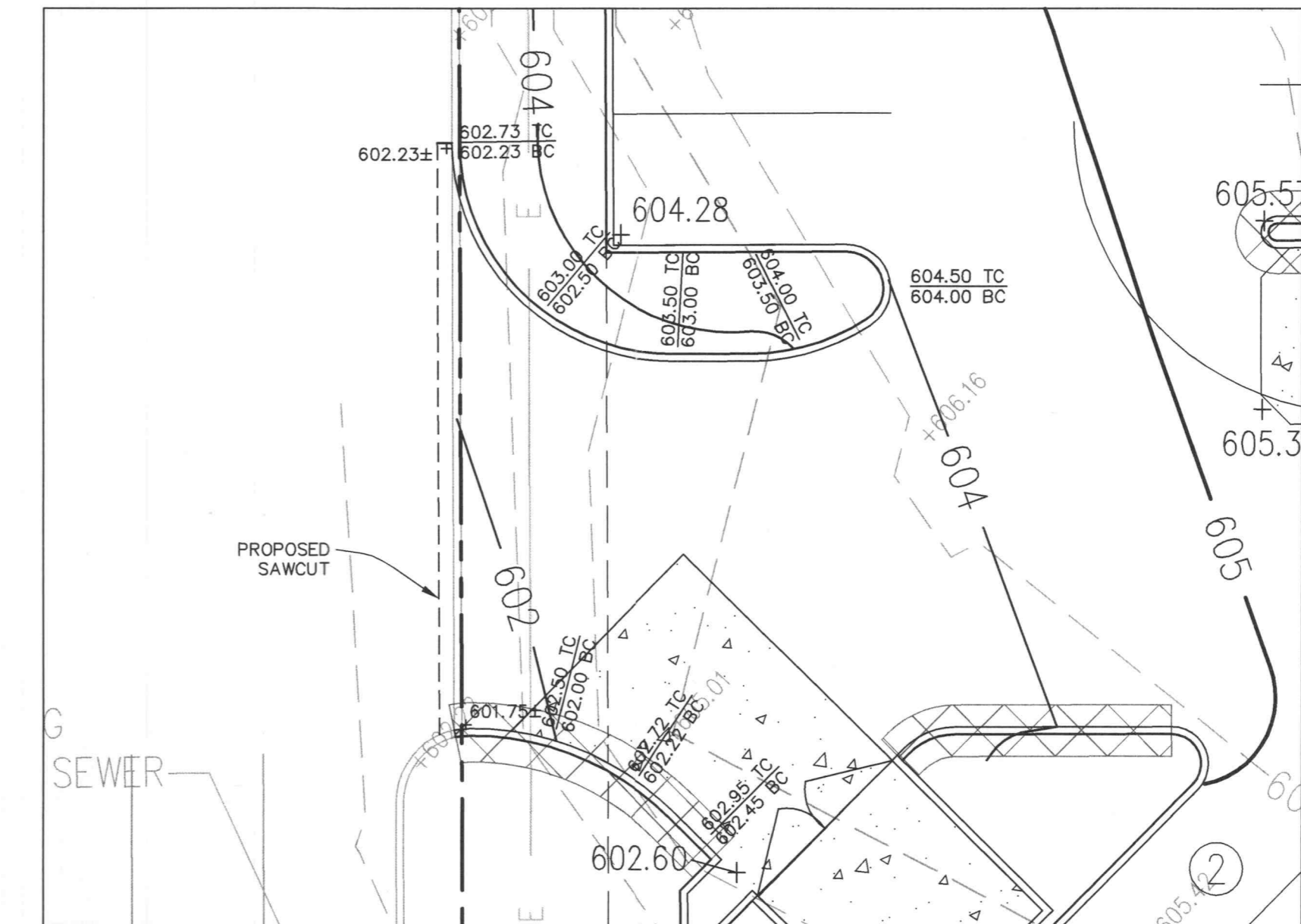
- INSTALLATION NOTES:**
1. ECOBLANKET SHALL BE INSTALLED BY A REVIUS CERTIFIED INSTALLER AND CONSTRUCTED USING FILTERING MATERIAL MEETING THE REVIUS SPECIFICATIONS FOR PARTICLE SIZE AND COMPOST QUALITY.
 2. ECOBLANKET SHOULD BE INSTALLED TO A DEPTH OF 1-2" AND SHOULD EXTEND APPROXIMATELY 3' OVER THE TOP OF SLOPE AND/OR OVERLAP INTO EXISTING VEGETATION.



RIGHT-ONLY EXIT WARPING DETAIL

SCALE: 1"=10'

EXISTING PAYMENT REMOVAL IS TO BE TO THE NEAREST JOINT



ENTRANCE WARPING DETAIL

SCALE: 1"=10'

- 02-08-07 ADDED WATER LINE EXHIBITS TO SHEET C5
- 01-22-07 REVISED GRADES AND WATER LINE AT NORTHEAST CORNER
- 10-09-06 RELOCATED LIGHT FIXTURES
- 06-28-06 REVISED PER CITY COMMENTS DATED 6-15-06
- 05-31-06 REVISED PER CITY COMMENTS FROM PLANNING AND ZONING MEETING ON 5-18-06
- 03-16-06 REVISED PER CITY COMMENTS-ADDED PEDESTRIAN ACCESS WALK/STAIR NEAR MONUMENT SIGN
- 02-09-06 ADDENDUM #1 COORDINATION-REVISED WATER LINE, ROOF DRAIN, SPOT ELEVATIONS
- 02-06-06 BID SET
- 01-23-06 REVISED BUILDING FOOTPRINT PER ARCHITECT
- 11-18-05 REVISED PER CITY COMMENT LETTER DATED 10-19-05

EROSION CONTROL AND WARPING DETAILS
TERRA RETAIL DEVELOPMENT/HEARTLAND BANK

P&Z NOS: 98-126.06

DETAILS COURTESY OF:
FILTREXX
6 SILVER LEAF COURT
LAKE ST. LOUIS, MO. 63367
ATTN: Rob Carothers & Shawn Gorfand
TEL: 636-561-3158
FAX: 636-561-3159
soil-tekm@centurytel.net

STATE OF MISSOURI
GEORGE MICHAEL STOCK
REGISTERED PROFESSIONAL ENGINEER
NUMBER E-25118
2-06-07
GEORGE M. STOCK E-25118

STOCK & ASSOCIATES
Consulting Engineers, Inc.
257 Chesterfield Business Parkway
St. Louis, MO 63005
PH. (636) 530-9100
FAX (636) 530-9130
e-mail: general@stockassoc.com
Web: www.stockassoc.com

DRAWN BY: J.P.P. DATE: 9/27/05
CHECKED BY: G.M.S. DATE: 9/27/05
JOB NUMBER: 205-3584
SHEET: C12 of 12