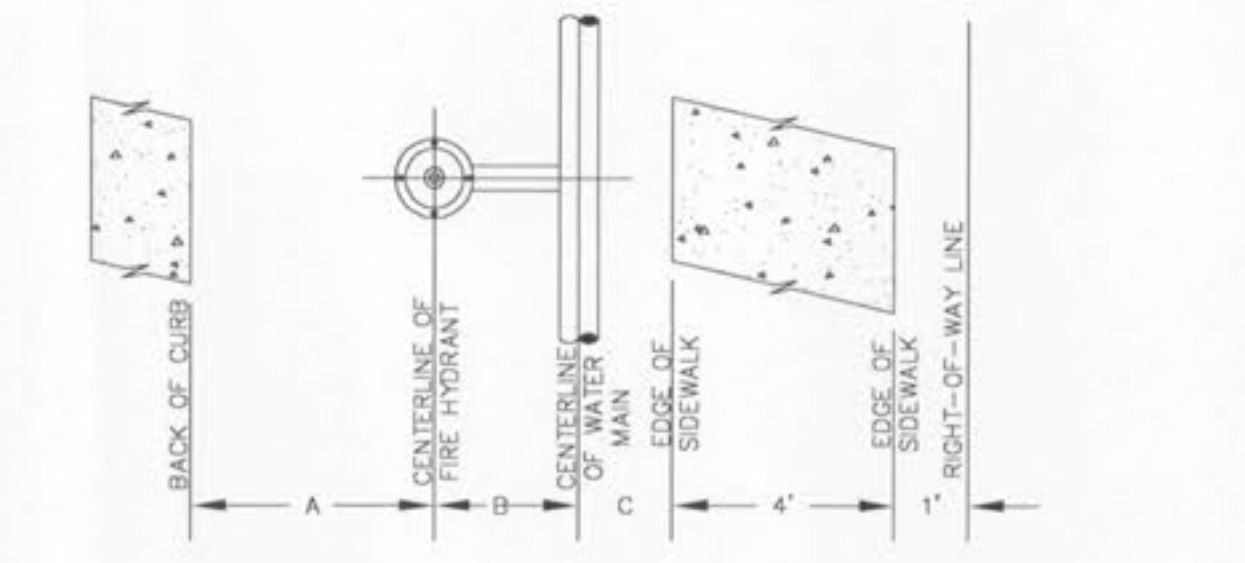
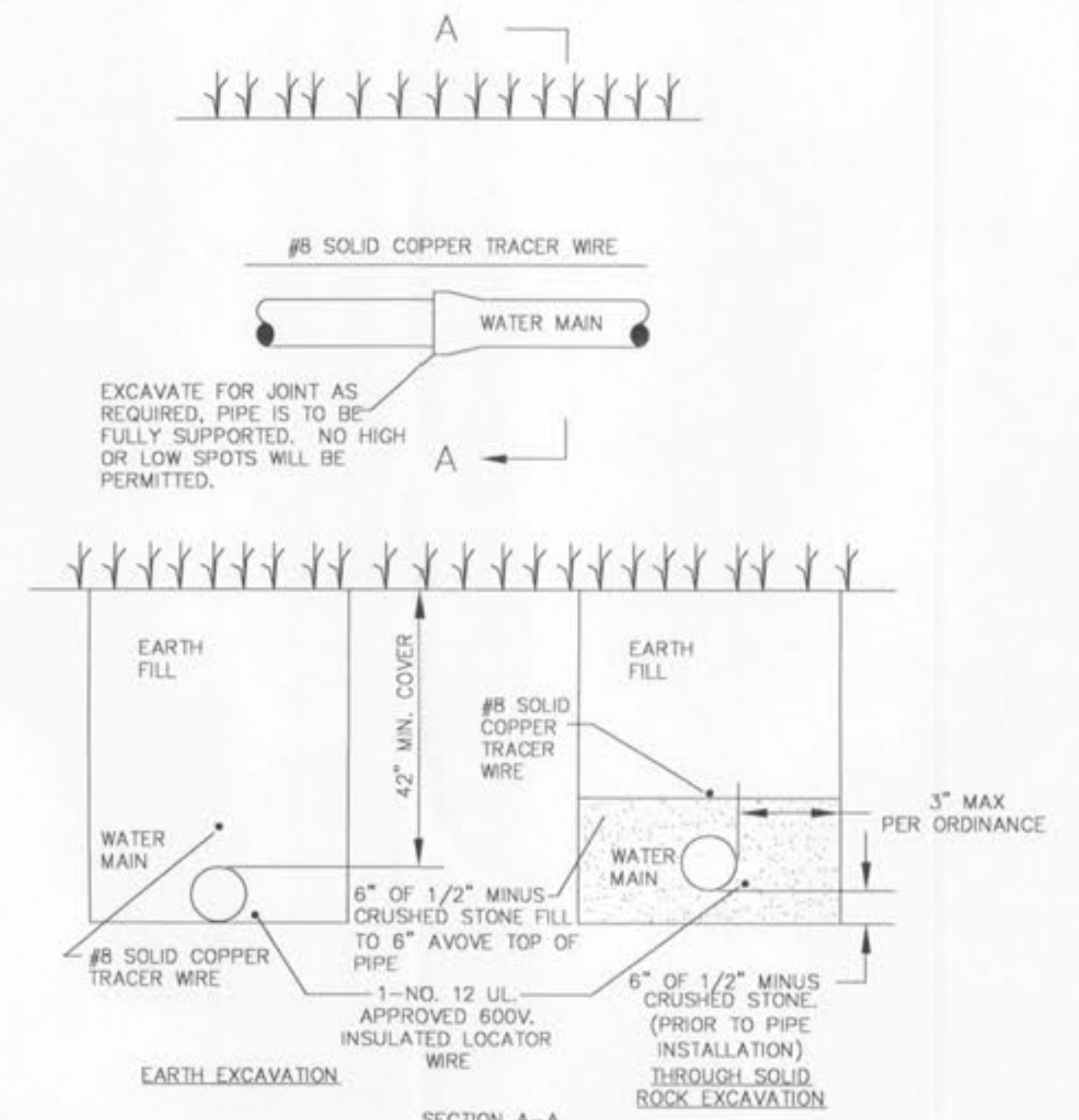


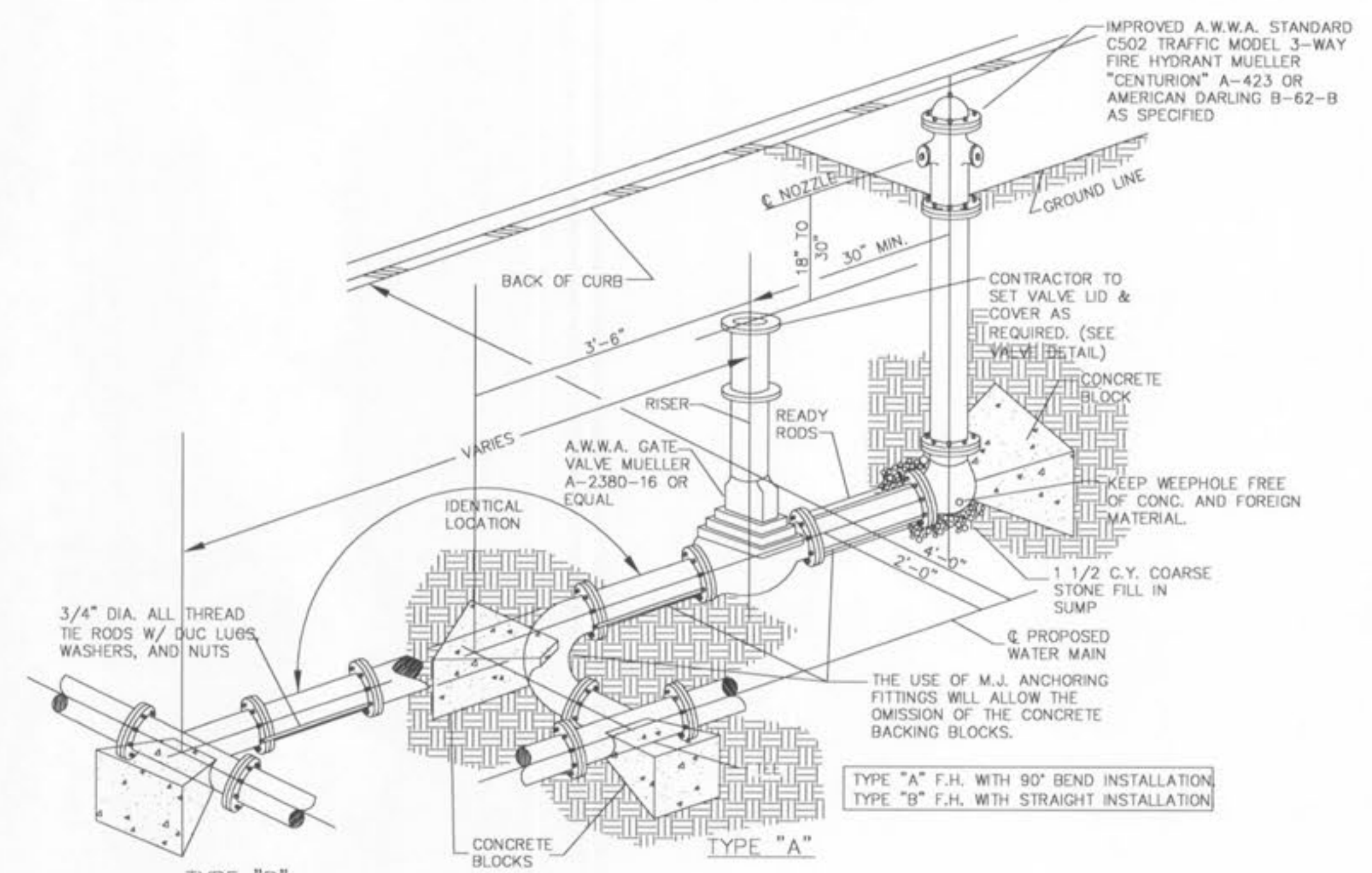
FLUSHING HYDRANT DETAIL
NOT TO SCALE



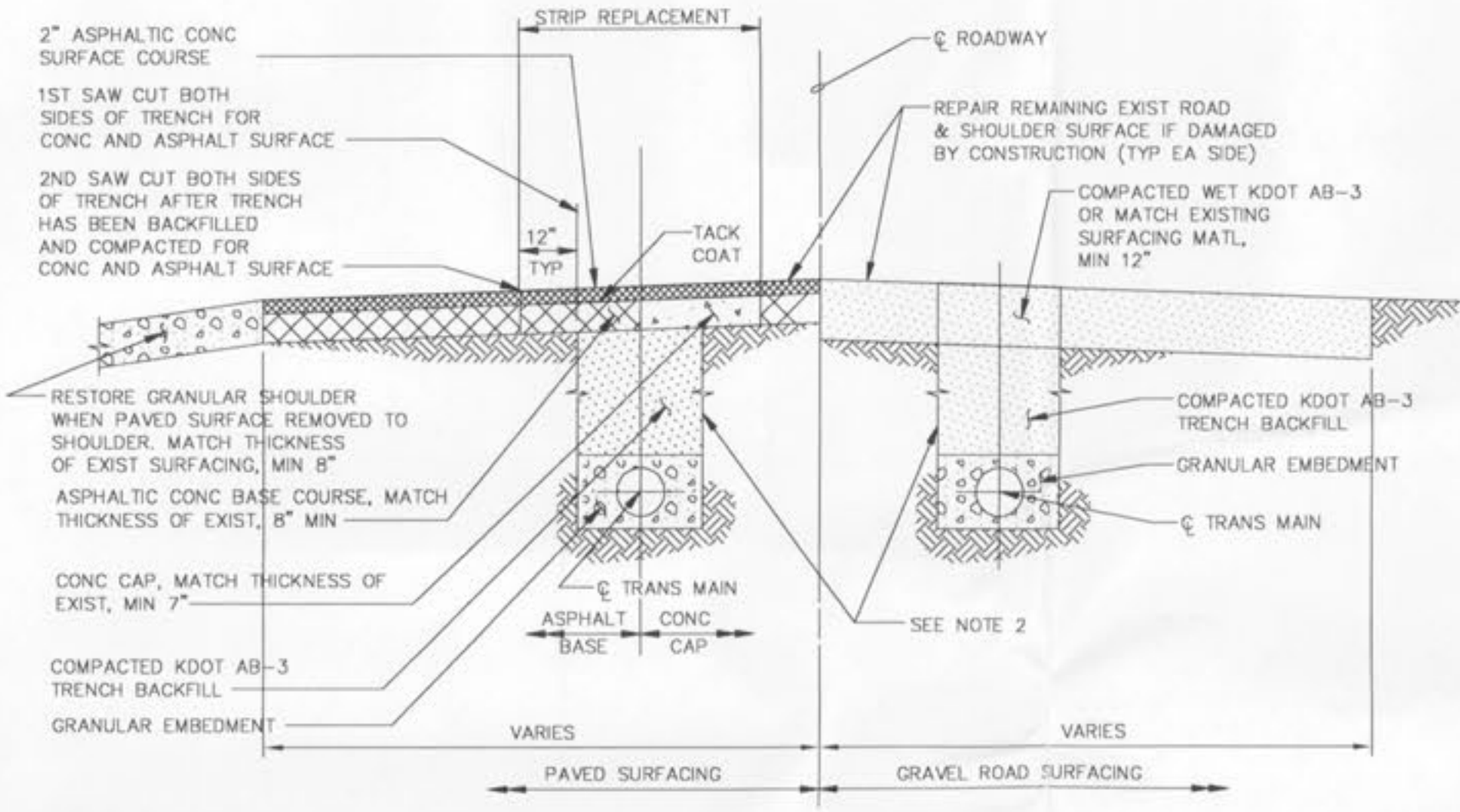
TYPICAL WATER MAIN AND FIRE HYDRANT LOCATIONS
NOT TO SCALE



TYPICAL WATER MAIN INSTALLATION DETAILS
NOT TO SCALE

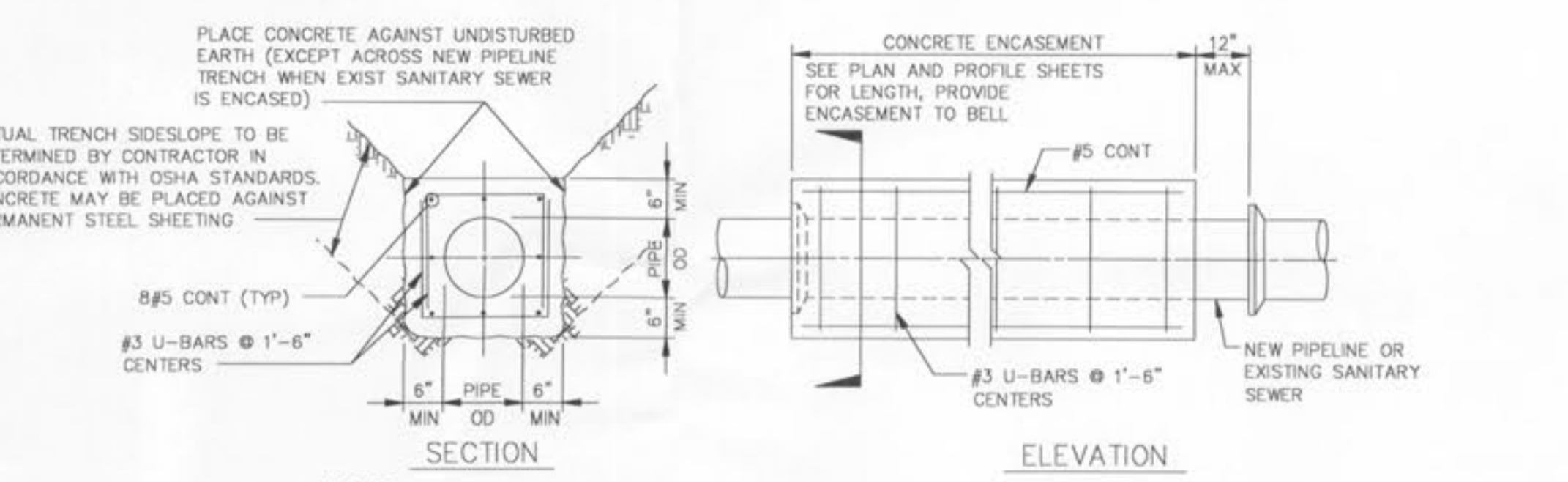


FIRE HYDRANT DETAIL
NOT TO SCALE



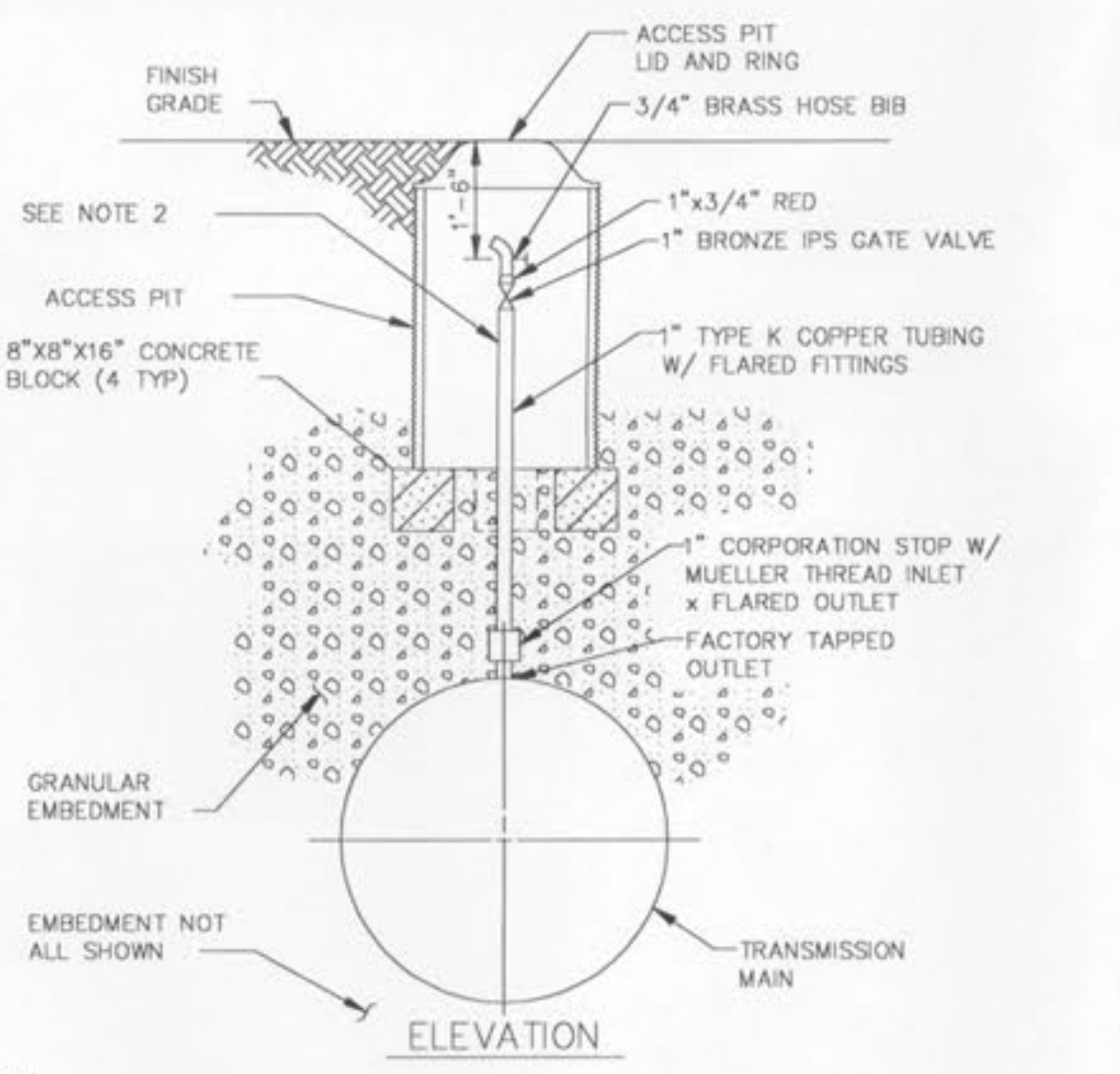
- NOTES:
- CONTRACTOR TO OBTAIN RIGHT-OF-WAY CONSTRUCTION UTILITY PERMIT FROM THE JOHNSON COUNTY KANSAS PUBLIC WORKS DEPARTMENT AND NOTIFY THEM FOR INSPECTION PRIOR TO ANY REPAIRS. SEE APPENDIX C OF THE SPECIFICATIONS FOR COPY OF UTILITY PERMIT FORM.
 - ACTUAL TRENCH SIDESLOPE TO BE DETERMINED BY CONTRACTOR IN ACCORDANCE WITH OSHA STANDARDS.
 - SEE PLAN SHEETS FOR LOCATION OF TRANSMISSION MAIN WITHIN STREET AND ROADWAYS.
 - THE DIMENSION OF THE GRANULAR EMBEDMENT ABOVE THE TOP OF THE TRANSMISSION MAIN SHALL BE 1/8 TIMES COVER, 6" MIN.
 - ASPHALTIC CONC BASE COURSE OR CONC CAP AS REQUIRED BY APPLICABLE CITY OR COUNTY.

STREET TRENCHING DETAIL AND CROSSING SECTION
NO SCALE



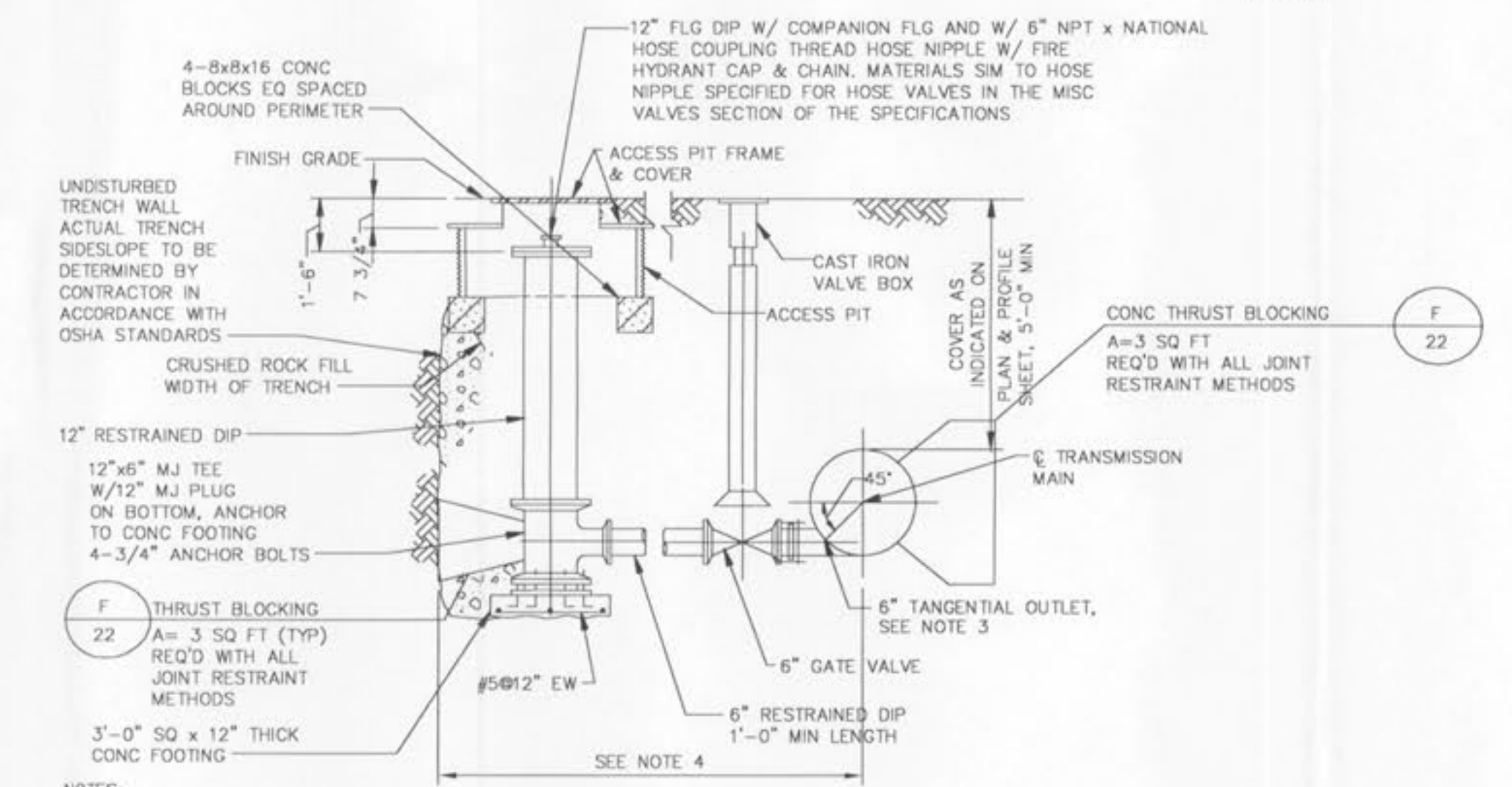
- NOTES:
- AT LOCATIONS WHERE THE TRANSMISSION MAIN CROSSES AN EXIST SANITARY SEWER, SEE SPECIFICATIONS FOR ADDITIONAL REQUIREMENTS.
 - WHEN THE PIPELINE IS PROTECTED WITH POLYETHYLENE TUBE ENCASEMENT, THE CONCRETE ENCASEMENT IS TO COVER THE POLYETHYLENE ENCASEMENT.

CONCRETE ENCASEMENT
NO SCALE



- NOTES:
- SEE PLAN AND PROFILE SHEETS FOR LOCATIONS OF MANUAL AIR RELEASE VALVE ASSEMBLIES. WHERE THE TRANSMISSION MAIN IS UNDER PAVEMENT, MANUAL AIR RELEASE VALVE ASSEMBLY IS TO BE INSTALLED REMOTE FROM TRANSMISSION MAIN AS DETERMINED IN THE FIELD BY THE ENGINEER BASED UPON THE CONDITIONS ENCOUNTERED.
 - EXPOSED PIPING, FITTINGS, AND VALVES IN ACCESS PIT TO BE WRAPPED WITH 1" THICK INSULATION.

MANUAL AIR RELEASE VALVE ASSEMBLY
NO SCALE



- NOTES:
- SEE PLAN & PROFILE SHEETS FOR APPROXIMATE LOCATION AND ORIENTATION OF BLOWOFF FACILITY. PRECISE LOCATION OF OUTLET, RISER PIPE, AND ACCESS PIT IS TO BE DETERMINED IN THE FIELD BY THE ENGINEER BASED UPON THE CONDITIONS ENCOUNTERED.
 - ALL JOINTS TO BE RESTRAINED.
 - AT THE OPTION OF THE CONTRACTOR, THE VALVE CONNECTION TO THE TANGENTIAL OUTLET MAY BE MADE BY ONE OF THE FOLLOWING METHODS: A) A TYTON JOINT GATE VALVE AND FIELD LOCK RESTRAINED PUSH-ON JOINT, B) A MJ GATE VALVE AND GRIP RING PIPE RESTRAINER BY ROMAC INDUSTRIES, INC., C) A MJ GATE VALVE AND A PLAIN END OUTLET WITH A WELDED GLAND AND ANCHORED COUPLING.
 - SEE PLAN FOR MAXIMUM DISTANCE FROM TRANSMISSION MAIN TO PERMANENT EASEMENT. IF BLOWOFF FACILITY CANNOT BE INSTALLED WITHIN THE MAXIMUM DISTANCE, ADD A 90° BEND AFTER THE VALVE AND INSTALL 6" PIPING PARALLEL TO THE TRANSMISSION MAIN.

BLOWOFF FACILITY
NO SCALE

NO.	DATE	REVISIONS
1	12-28-05	CITY OF FALLON COMMENTS
2	02-09-06	CITY OF FALLON COMMENTS
3	05-02-06	CITY OF FALLON COMMENTS
4	05-02-06	REVISION COMMENTS

DEVELOPER/OWNER:
R3 DEVELOPMENT, LLC
7800 HIGHWAY N
OF FALLON, MO 63366
(636) 561-3948



THE HEIGHTS
1609 HIGHWAY 79
OF FALLON, MO 63366

planning • engineering • surveying • landscape architecture
Cole and Associates
INCORPORATED
10777 sunset office dr. suite 10
saint louis, missouri 63127
p. 314 984 9887 f. 314 984 0687

DESIGNED BY: JCB
DRAWN BY: JCB
CHECKED BY: MB
DATE: 10/03/05
Job Number: 05-143
Sheet Number: C10.7

L:\proj\DETAILS\2008 - 11-2008 - 11-2008
 DATE: 10/03/05
 DRAWING: S:\095\0952005\05-143\05-05-143\dwg\05-143_details_05-143.dwg

P&Z #2705 & 2705.01