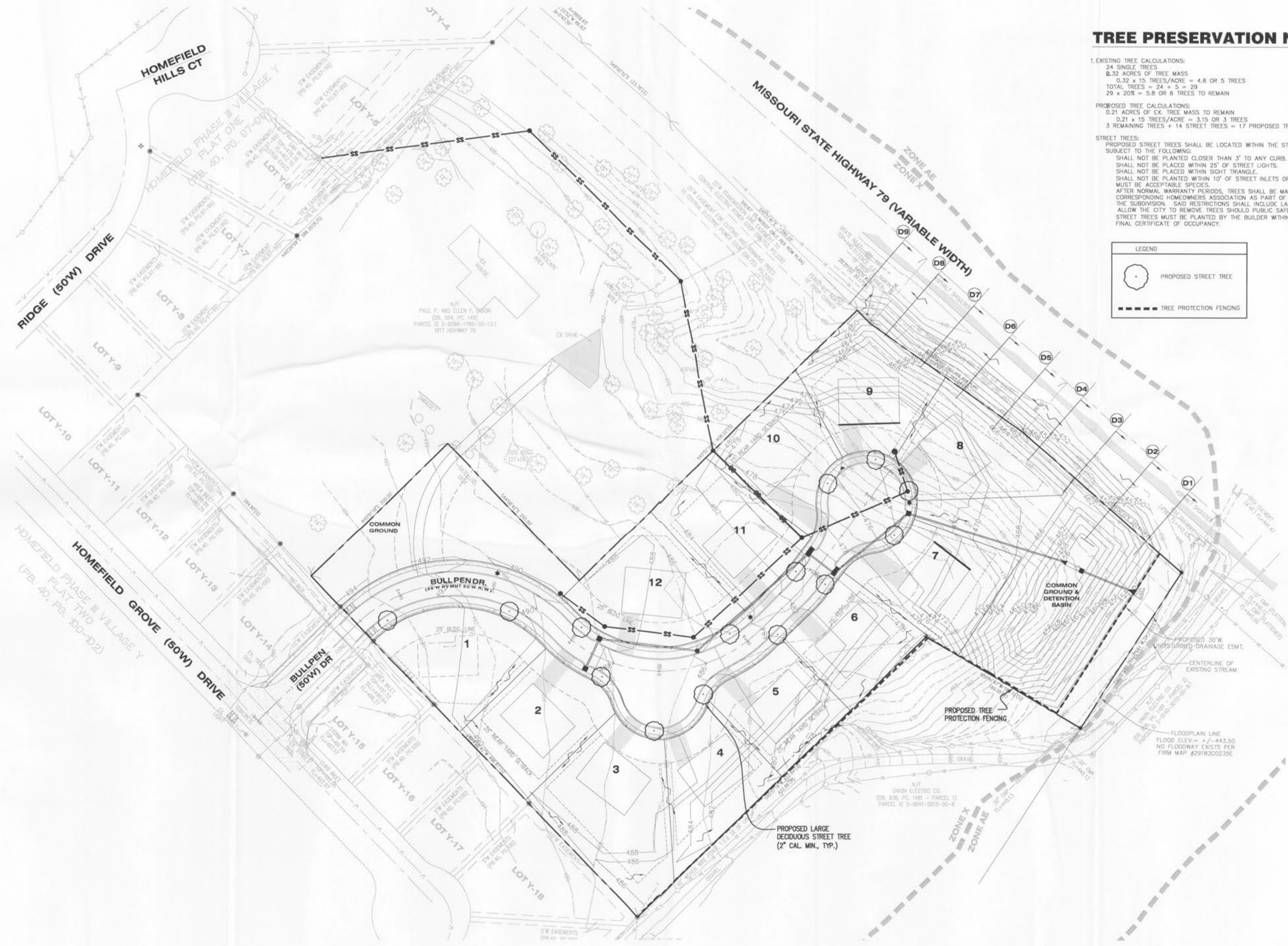
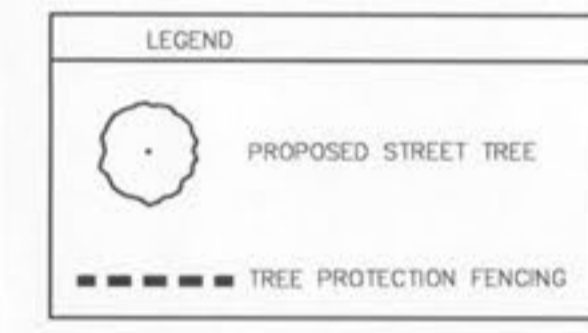


### TREE PRESERVATION NOTES

1. EXISTING TREE CALCULATIONS:  
 24 SINGLE TREES  
 0.32 ACRES OF TREE MASS  
 $0.32 \times 15 \text{ TREES/ACRE} = 4.8 \text{ OR } 5 \text{ TREES}$   
 TOTAL TREES = 24 + 5 = 29  
 $29 \times 20\% = 5.8 \text{ OR } 6 \text{ TREES TO REMAIN}$

PROPOSED TREE CALCULATIONS:  
 0.21 ACRES OF EX. TREE MASS TO REMAIN  
 $0.21 \times 15 \text{ TREES/ACRE} = 3.15 \text{ OR } 3 \text{ TREES}$   
 3 REMAINING TREES + 14 STREET TREES = 17 PROPOSED TREES

STREET TREES:  
 PROPOSED STREET TREES SHALL BE LOCATED WITHIN THE STREET RIGHT-OF-WAY AND ARE SUBJECT TO THE FOLLOWING:  
 SHALL NOT BE PLANTED CLOSER THAN 3' TO ANY CURB.  
 SHALL NOT BE PLACED WITHIN 25' OF STREET LIGHTS.  
 SHALL NOT BE PLACED WITHIN SIGHT TRIANGLE.  
 SHALL NOT BE PLANTED WITHIN 10' OF STREET INLETS OR MANHOLES.  
 MUST BE ACCEPTABLE SPECIES.  
 AFTER NORMAL WARRANTY PERIODS, TREES SHALL BE MAINTAINED IN GOOD CONDITION BY THE CORRESPONDING HOMEOWNERS ASSOCIATION AS PART OF THE COVENANTS AND RESTRICTIONS OF THE SUBDIVISION. SAID RESTRICTIONS SHALL INCLUDE LANGUAGE APPROVED BY THE CITY TO ALLOW THE CITY TO REMOVE TREES SHOULD PUBLIC SAFETY BE THREATENED.  
 STREET TREES MUST BE PLANTED BY THE BUILDER WITHIN ONE (1) YEAR OF ISSUANCE OF THE FINAL CERTIFICATE OF OCCUPANCY.



<b>REVISIONS</b> 02-28-05 1 CITY OF OTTAWA COMMENTS 02-29-05 2 CITY OF OTTAWA COMMENTS 04-03-05 3 CITY OF OTTAWA COMMENTS 05-22-05 4 MAST COMMENTS	
DEVELOPER/OWNER: <b>R3 DEVELOPMENT, LLC</b> 7800 HIGHWAY N OTTAWA, MO 63366 (636) 561-3948	
<b>THE HEIGHTS</b> 1609 HIGHWAY 79 OTTAWA, MO 63366	<b>LANDSCAPING PLAN</b>
planning • engineering • surveying • landscape architecture <b>Cole and Associates Incorporated</b> 10777 sunset office dr. suite 10 saint louis, missouri 63127 p. 314.984.9887 f. 314.984.0587	
DESIGNED BY: JCB DRAWN BY: JCB CHECKED BY: MB	DATE: 10/03/05 Job Number: 05-143 Sheet Number: L1.0

L:\001\Layout\1006 - 11.20m\DRAWING\5 - L1.05\1006-11.20m\1006-11.20m\1006-11.20m\1006-11.20m.dwg  
 P&Z #2705 & 2705.01