

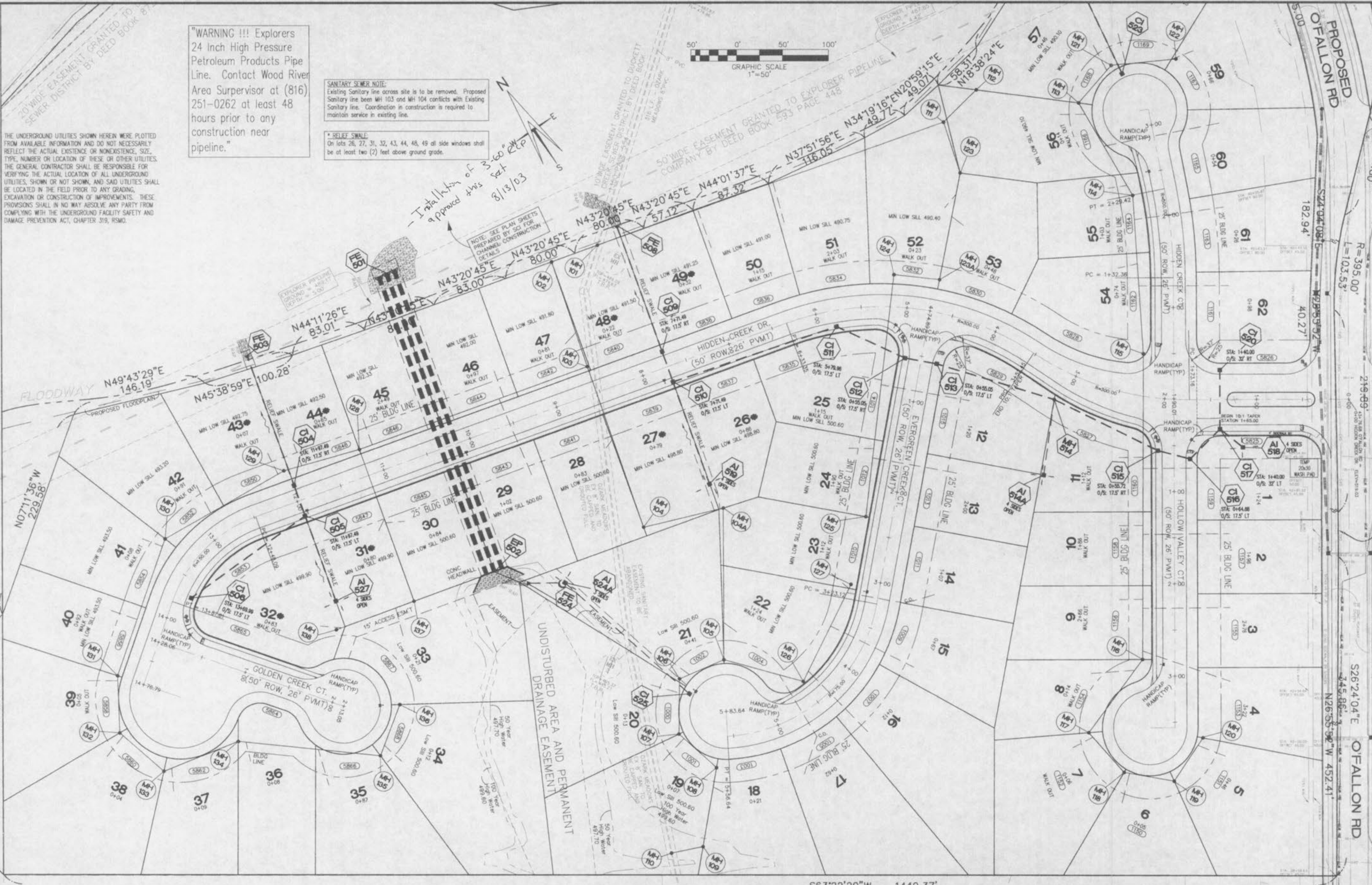
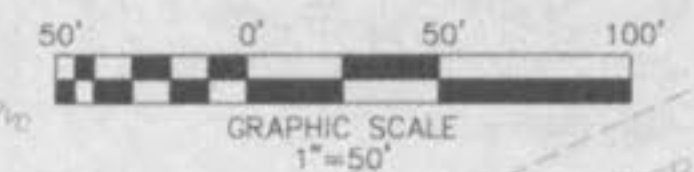
70' WIDE EASEMENT GRANTED TO SEWER DISTRICT BY DEED BOOK 81

"WARNING !!! Explorers 24 Inch High Pressure Petroleum Products Pipe Line. Contact Wood River Area Supervisor at (816) 251-0262 at least 48 hours prior to any construction near pipeline."

SANITARY SEWER NOTE:
Existing Sanitary line across site is to be removed. Proposed Sanitary line between MH 103 and MH 104 conflicts with Existing Sanitary line. Coordination in construction is required to maintain service in existing line.

*** RELIEF SWALE:**
On lots 26, 27, 31, 32, 43, 44, 46, 49 at side windows shall be at least two (2) feet above ground grade.

THE UNDERGROUND UTILITIES SHOWN HEREIN WERE PLOTTED FROM AVAILABLE INFORMATION AND DO NOT NECESSARILY REFLECT THE ACTUAL EXISTENCE OR NONEXISTENCE, SIZE, TYPE, NUMBER OR LOCATION OF THESE OR OTHER UTILITIES. THE GENERAL CONTRACTOR SHALL BE RESPONSIBLE FOR VERIFYING THE ACTUAL LOCATION OF ALL UNDERGROUND UTILITIES, SHOWN OR NOT SHOWN, AND SAID UTILITIES SHALL BE LOCATED IN THE FIELD PRIOR TO ANY GRADING, EXCAVATION OR CONSTRUCTION OF IMPROVEMENTS. THESE PROVISIONS SHALL IN NO WAY ABSOLVE ANY PARTY FROM COMPLYING WITH THE UNDERGROUND FACILITY SAFETY AND DAMAGE PREVENTION ACT, CHAPTER 319, RSMO.



**FLAT PLAN
HIDDEN CREEK
PHASE 1**

ST. CHARLES ENGINEERING & SURVEYING, INC.
801 S. FIFTH STREET, SUITE 202
ST. CHARLES, MO 63301
TEL: (636) 947-0607 FAX: (636) 947-2448



ORDER NO.	02-0162-01
DATE	09/29/02
	2

O'Fallon File Number 1002.02

PROPERTY N/P BPD CO. LLC. 2331/1460 (NOTE: THIS PROPERTY HAS ACCESS FROM

ALL STORM AND SANITARY SEWERS WILL BE WITHIN EASEMENTS THAT WILL BE ESTABLISHED ON THE RECORD PLAT.

OSARK MEADOWS P.B. 30 PG. 146

S63°22'20"W 1449.37'

PROPOSED OF FALLOON RD

R=395.00' L=103.53'

PROPOSED OF FALLOON RD