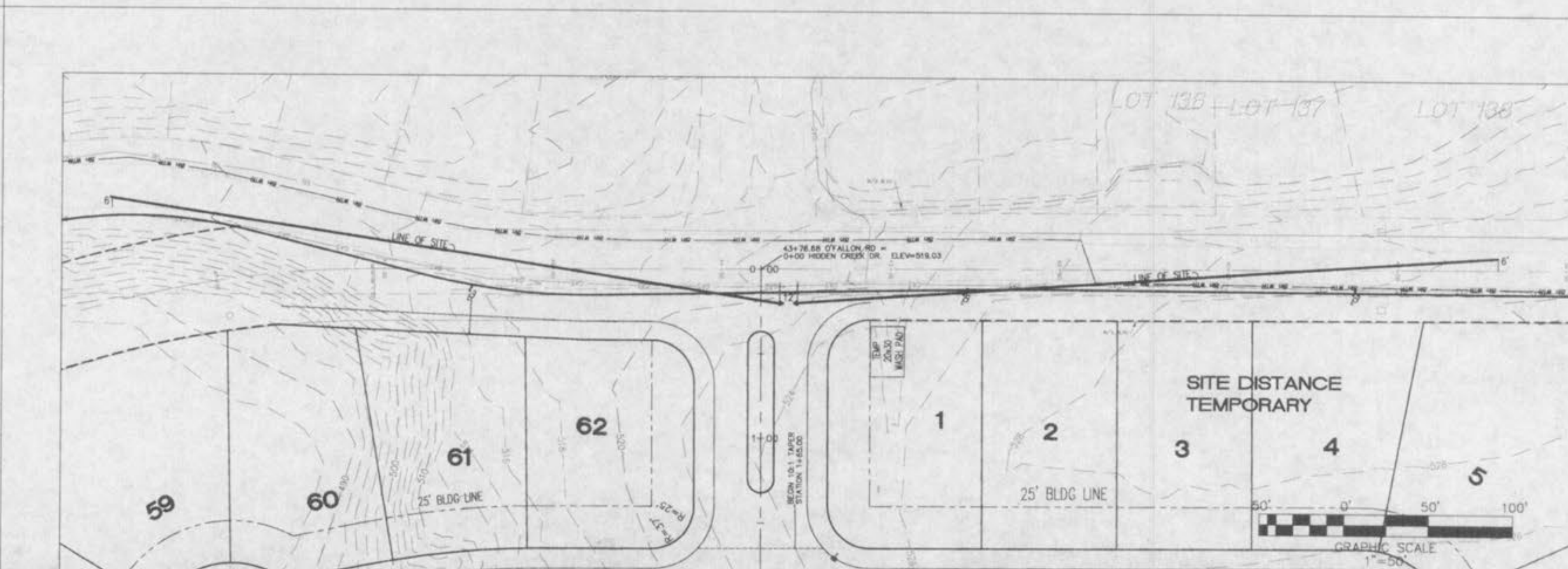
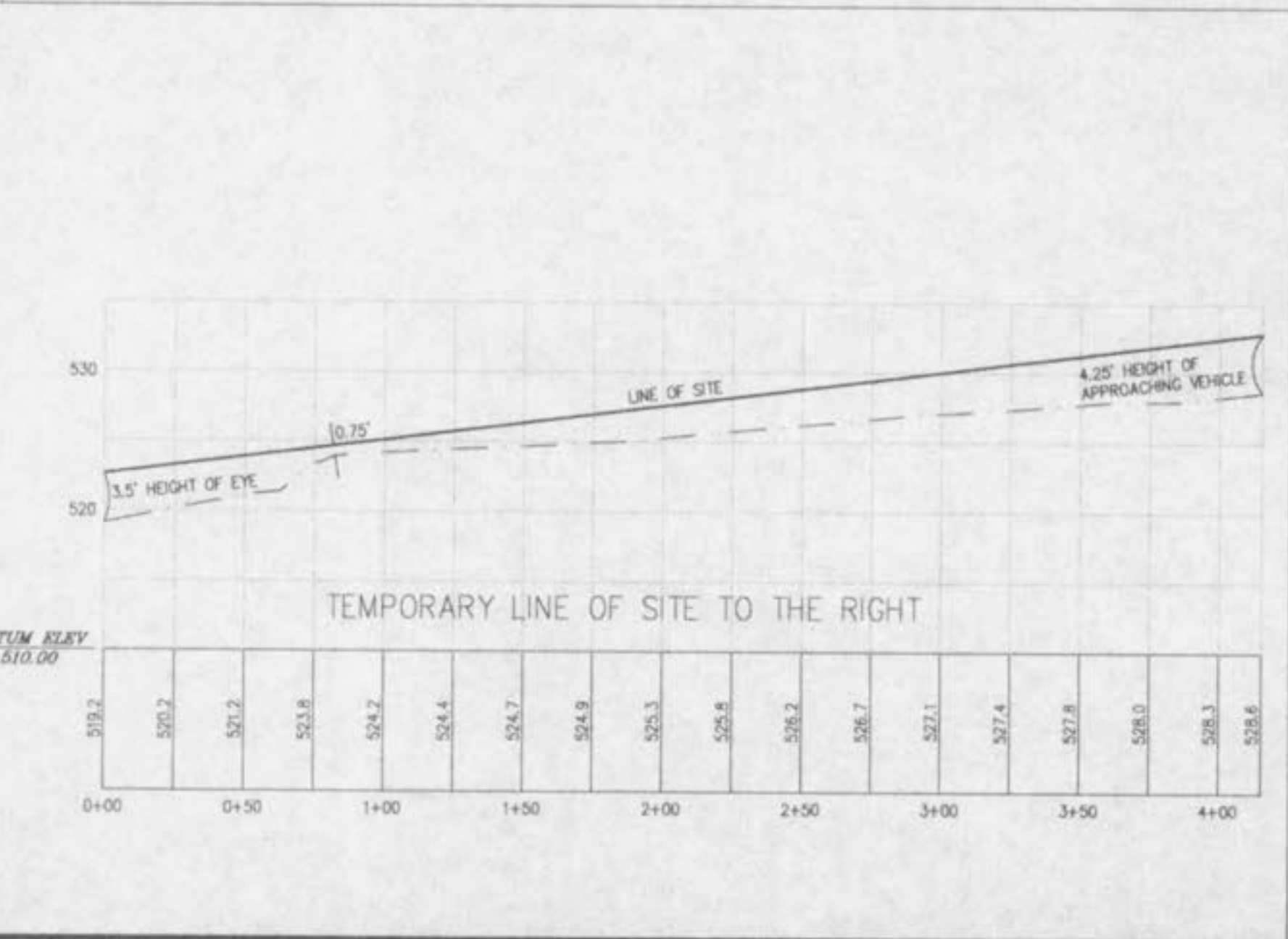
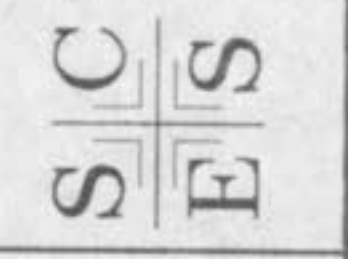


LINE OF SITE NOTES:
ALL TREES AND BRUSH SHALL BE REMOVED FROM THE LINE OF SITE.
LINE OF SITE TO THE NORTH AT LEAST 400'
LINE OF SITE TO THE SOUTH AT LEAST 415'



SITE DISTANCE
HIDDEN CREEK
PHASE 1

ST. CHARLES ENGINEERING & SURVEYING, INC.
801 S. FIFTH STREET, SUITE 202
ST. CHARLES, MO 63301
TEL: (636) 947-0607 FAX: (636) 947-2448



ORDER NO. 02-0162-01
DATE 6/10/03
7A