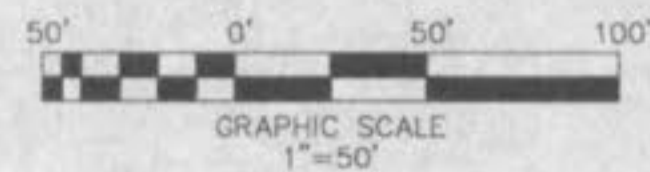


THE UNDERGROUND UTILITIES SHOWN HEREIN WERE PLOTTED FROM AVAILABLE INFORMATION AND DO NOT NECESSARILY REFLECT THE ACTUAL EXISTENCE OR NONEXISTENCE, SIZE, TYPE, NUMBER OR LOCATION OF THESE OR OTHER UTILITIES. THE GENERAL CONTRACTOR SHALL BE RESPONSIBLE FOR VERIFYING THE ACTUAL LOCATION OF ALL UNDERGROUND UTILITIES SHOWN OR NOT SHOWN, AND SAID UTILITIES SHALL BE LOCATED IN THE FIELD PRIOR TO ANY GRADING, EXCAVATION OR CONSTRUCTION OF IMPROVEMENTS. THESE PROVISIONS SHALL IN NO WAY ABSOLVE ANY PARTY FROM COMPLYING WITH THE UNDERGROUND FACILITY SAFETY AND DAMAGE PREVENTION ACT, CHAPTER 319, RSMO.



OPEN CUT O'FALLON RD FOR WATER LINE

ONE LANE OF TRAFFIC SHALL REMAIN OPEN AT ALL TIMES WITH FLAGMEN ON EITHER SIDE DIRECTING TRAFFIC.

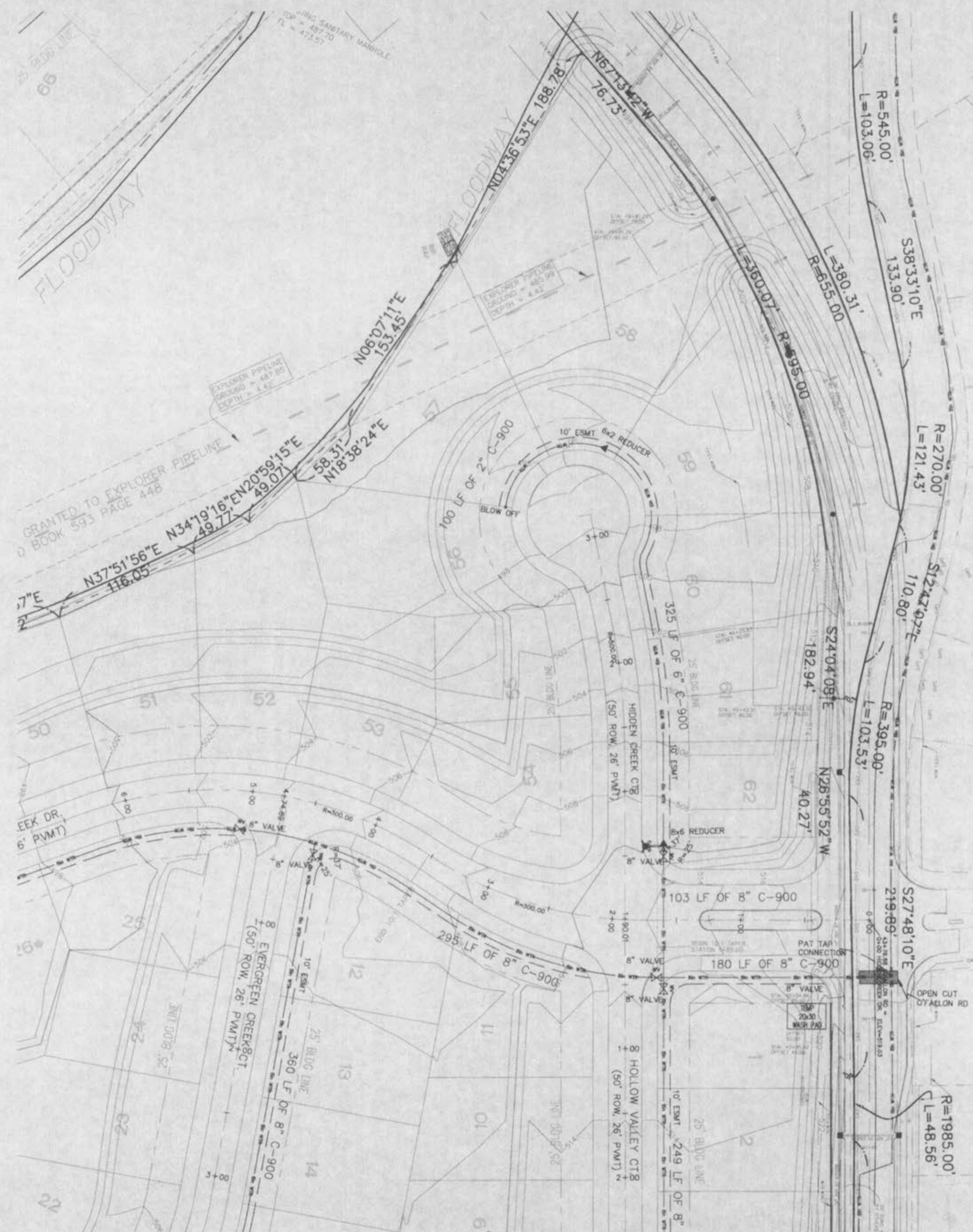
A SPECIAL USE PERMIT MUST BE OBTAINED FROM ST. CHARLES COUNTY HIGHWAY DEPARTMENT FOR CONSTRUCTION OF THE CROSSING WITHIN O'FALLON RD.

FIRE DISTRICT NOTES:

1) The minimum fire flow from a single fire hydrant shall be fifteen hundred (1500) gallons per minute at twenty (20) psi residual pressure. Exception: Hydrants ordered for one and two family dwelling unit developments of less than fifteen hundred (1500) square feet and having a minimum fire separation of six (6) feet, shall have a minimum flow of one thousand (1000) gallons per minute at twenty (20) psi residual pressure.

2) there shall be no obstructions, i.e. plantings, bushes, trees, signs, light standards, mailboxes, etc. within six (6) feet of any fire hydrant.

3) In setting hydrants, due regard shall be given to final gradeline. The center of a hose nozzle outlet shall not be less than eighteen (18) inches above grade and outlets must face the street or access drive.

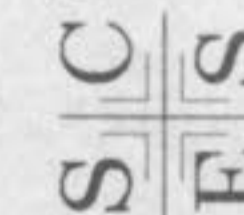


O'Fallon File
Number 1002.02

06/27/03	REVISED AS PER COMMENTS
07/03/03	REVISED AS PER COMMENTS

**WATER PLAN
HIDDEN CREEK
PHASE 1**

ST. CHARLES ENGINEERING & SURVEYING, INC.
801 S. FIFTH STREET, SUITE 202
ST. CHARLES, MO 63301
TEL: (636) 947-0607 FAX: (636) 947-2448



ORDER NO.
02-0162-01

DATE
03/21/03