

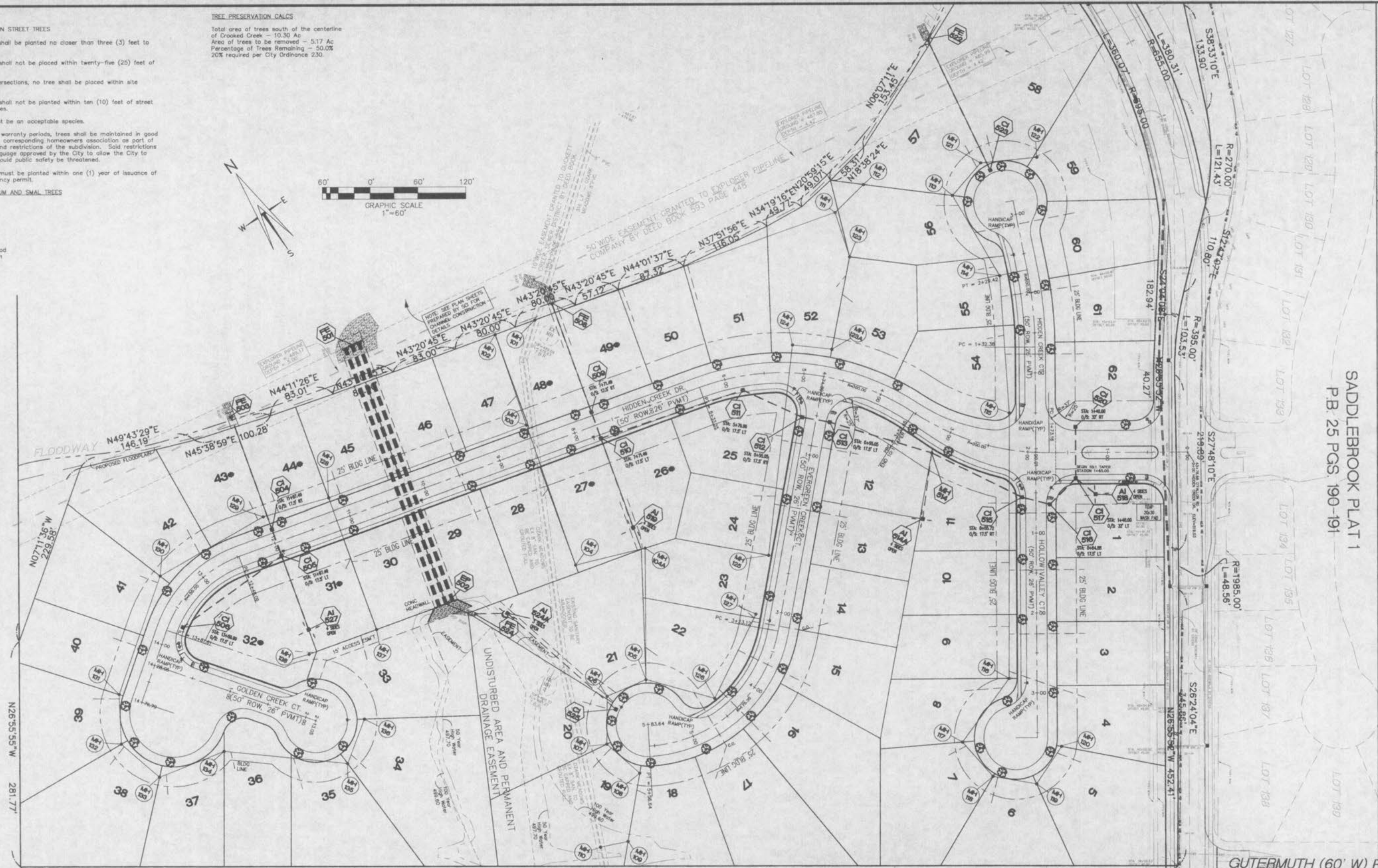
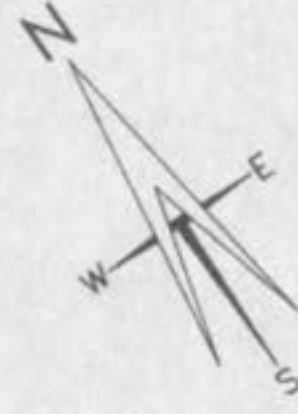
- CITY OF O'FALLON STREET TREES
1. Street trees shall be planted no closer than three (3) feet to any curb.
  2. Street trees shall not be placed within twenty-five (25) feet of street lights.
  3. At street intersections, no tree shall be placed within site triangle.
  4. Street trees shall not be planted within ten (10) feet of street inlets or manholes.
  5. All trees must be an acceptable species.
  6. After normal warranty periods, trees shall be maintained in good condition by the corresponding homeowners association as part of the covenants and restrictions of the subdivision. Said restrictions shall include language approved by the City to allow the City to remove trees should public safety be threatened.
  7. Street trees must be planted within one (1) year of issuance of the final occupancy permit.

APPROVED MEDIUM AND SMALL TREES

- Green Ash
- Red Mulberry
- Amber Maple
- Persimmon
- Eastern Redbud
- Wild Plum
- River Birch
- Flowering Dogwood
- Purple Leaf Plum

TREE PRESERVATION CALCS

Total area of trees south of the centerline of Crooked Creek - 10.30 Ac.  
 Area of trees to be removed - 5.17 Ac.  
 Percentage of Trees Remaining - 50.0%  
 20% required per City Ordinance 230.



PROPERTY N/IF  
 EPD CO. LLC  
 2331/1489  
 (NOTE: THIS PROPERTY HAS ACCESS FROM  
 OZARK WAY IN THE OZARK MEADOWS SUBDIVISION)

S63°22'20"W 1449.37'  
 OZARK MEADOWS  
 P.B. 30 PG. 146

SADDLEBROOK PLAT 1  
 P.B. 25 PGS. 190-191

LANDSCAPING  
 HIDDEN CREEK  
 PHASE 1

ST. CHARLES ENGINEERING & SURVEYING, INC.  
 801 S. FIFTH STREET, SUITE 202  
 ST. CHARLES, MO 63301  
 TEL: (636) 947-0607 FAX: (636) 947-2448



ORDER NO.	02-0162-01
DATE	08/21/03
	17

REVISED AS PER CITY COMMENTS  
 07/23/03