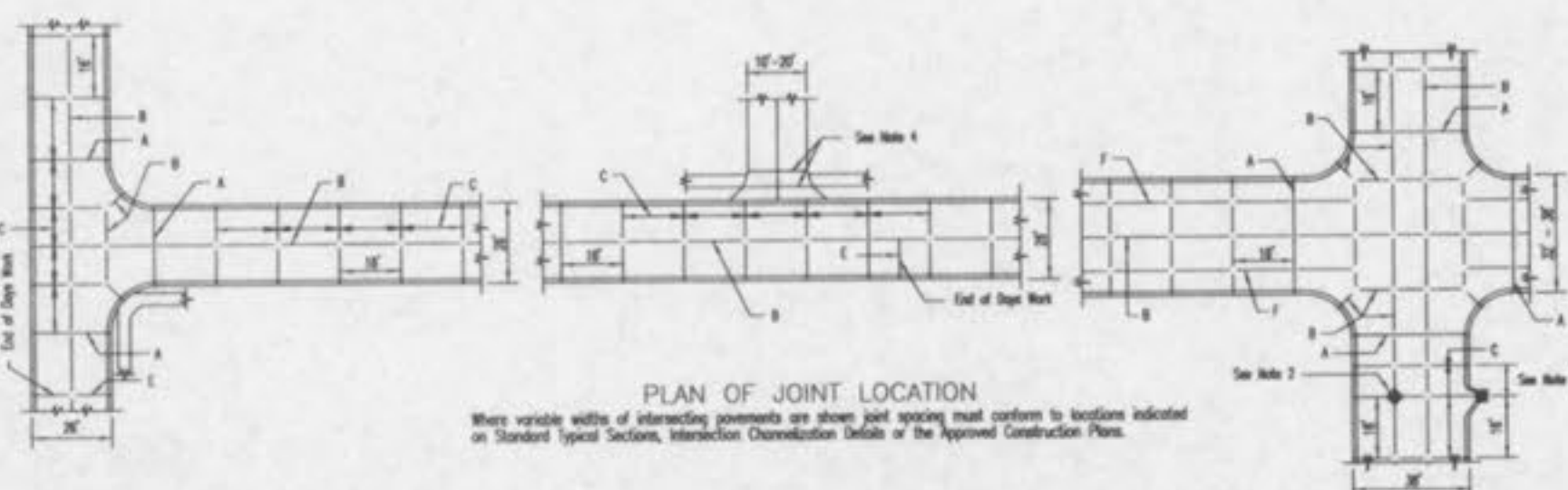
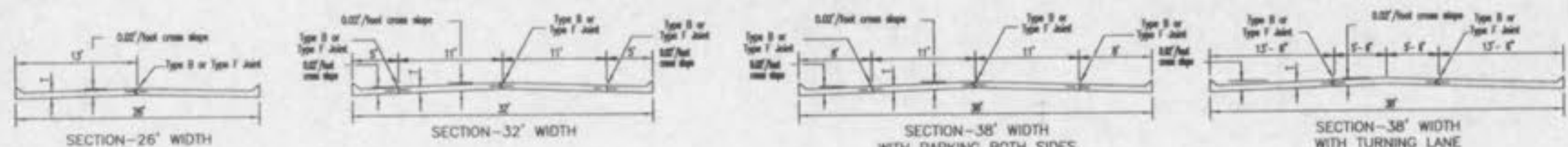


INTEGRAL ROLLED CURB AND CONCRETE PAVEMENT TYPICAL SECTIONS AND DETAILS



PLAN OF JOINT LOCATION
Where variable widths of intersecting pavements are shown joint spacing must conform to locations indicated on Standard Typical Sections, Intersection Detail or the Approved Construction Plans.

STREET	JOINT TYPE	JOINT AND BAR REQUIREMENTS
3 LANE RESIDENTIAL 32' wide pavement	Transverse	TYPE C no steel bars
	Longitudinal	While a paved section: TYPE F 3/8" ϕ deformed bar 18" \times 30" cts. At the edge between two paved sections: TYPE D 1/2" ϕ deformed bar 30" \times 30" cts.
7' thick concrete	Expansion	TYPE A no steel bars
	Transverse	TYPE C no steel bars
RESIDENTIAL 2 LANE 26' wide pavement	Longitudinal	Full Width Construction: TYPE F modified with 1/2" ϕ deformed bar 30" \times 30" cts. Half Width Construction: TYPE D modified with 1/2" ϕ deformed bar 30" \times 30" cts.
	Expansion	TYPE A no steel bars

NOTE

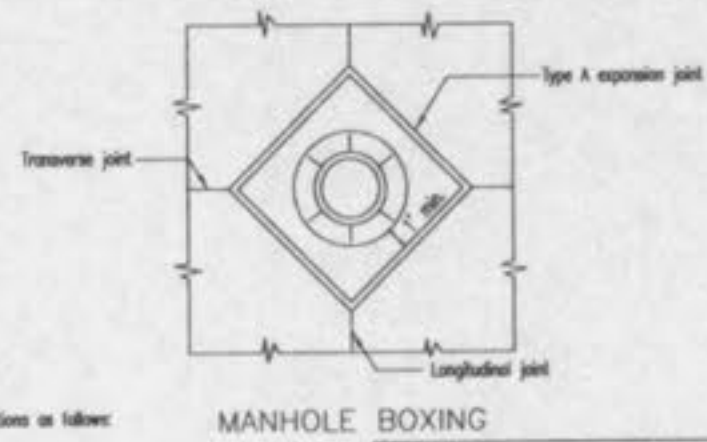
Joint filler material shall meet ASTM designations as follows:
Bituminous type ASTM D-994-93
Non extruding & resilient bituminous type (flex) ASTM D-1751-92

NOTE

Joint sealant material shall meet ASTM and AASHTO designations as follows:
ASTM D-3465 AASHTO M-301
ASTM D-1190-74 AASHTO M-173-84
or listed equivalent brand.

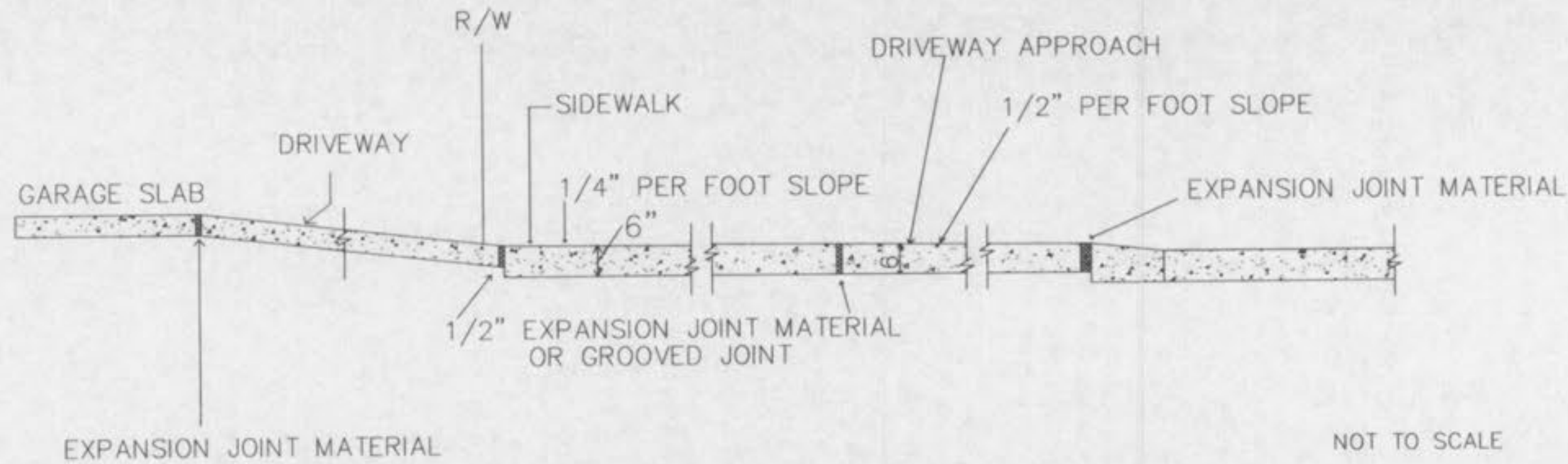
GENERAL NOTES

- Do not scale drawing. Follow dimensions.
- All street inlets shall be separated from the pavement and curb by expansion joint material extending completely through curb and slab. Manhole casting within the pavement limits shall be based on slabs.
- When a joint falls within 5ft. of, or contacts inlets, manholes, or other structures, shorten one or more panels either side of opening to permit joint to fall on road structure and at or between corners of rectangular structures.
- Driveway configurations are shown in the "Entrance Construction Details".
- Construction joints and tie bars may be omitted when curb is poured monolithic with pavement.
- Minimum Thickness for Pavement is:
Residential 26' wide 6"
Streets 32'-36' wide 7"
Streets
- For joint and bar requirements refer to the Pavement Construction Details for "Joints and Curbs." Std. Dep. CS02.03. Note that the width and location may change the type of joint required.
- Transverse or longitudinal construction joints in slip formed pavements may be made with a groover or lock, if such device has been approved in advance by the Department.
- The locations of the Type B longitudinal construction joints in the sections may be interchanged for the different widths of construction if approved by the Department.



MANHOLE BOXING

SAINT CHARLES COUNTY HIGHWAY DEPARTMENT ST. CHARLES, MISSOURI	DRAWING CS02.05
PAVEMENT CONSTRUCTION DETAILS INTEGRAL ROLLED CURB AND CONCRETE PAVEMENT TYPICAL SECTIONS AND DETAILS	DATE: October, 2002



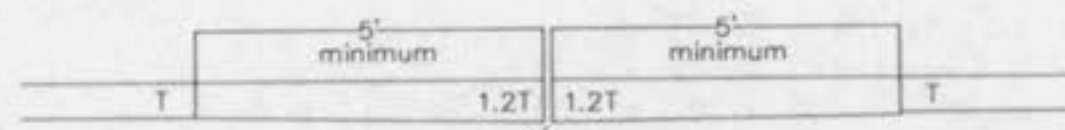
NOT TO SCALE

NOTES:

- A 1" JOINT IS REQUIRED AT THE CURB AND GARAGE FOR ALL DRIVEWAYS LOCATED ON THE OUTER EDGE OF CURVED PAVEMENT, UNLESS GROOVED JOINTS ARE USED AT SIDEWALK. THEN A 2" JOINT IS REQUIRED AT CURB.
- A 1/2" JOINT IS REQUIRED AT THE CURB AND GARAGE FOR ALL DRIVEWAYS LOCATED ON TANGENT SECTIONS OF PAVEMENT OR ON THE INNER EDGE OF CURVED PAVEMENT.
- EXPANSION JOINT MATERIAL MUST EXTEND THROUGH THE FULL DEPTH OF THE PAVEMENT.
- SIDEWALK THICKNESS SHALL BE A MINIMUM OF 7" THROUGH COMMERCIAL DRIVEWAYS.

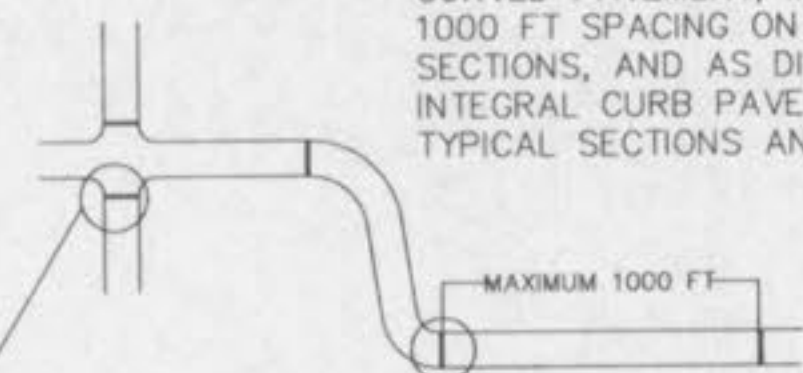
SAINT CHARLES COUNTY HIGHWAY DEPARTMENT ST. CHARLES, MISSOURI	DRAWING CS02.05
PAVEMENT CONSTRUCTION DETAILS	DATE: May, 2002
Integral Curb Detail "B" at Driveways	

TYPE A (MODIFIED) CONSTRUCTION JOINT



TYPE A (MODIFIED) CONSTRUCTION JOINT SAWED FULL DEPTH (1/2" WIDE)

JOINT LOCATION



AT EITHER PC OR PT OF CURVED PAVEMENT, MAXIMUM 1000 FT SPACING ON TANGENT SECTIONS, AND AS DIRECTED ON INTEGRAL CURB PAVEMENT TYPICAL SECTIONS AND DETAILS.

JOINT DETAILS

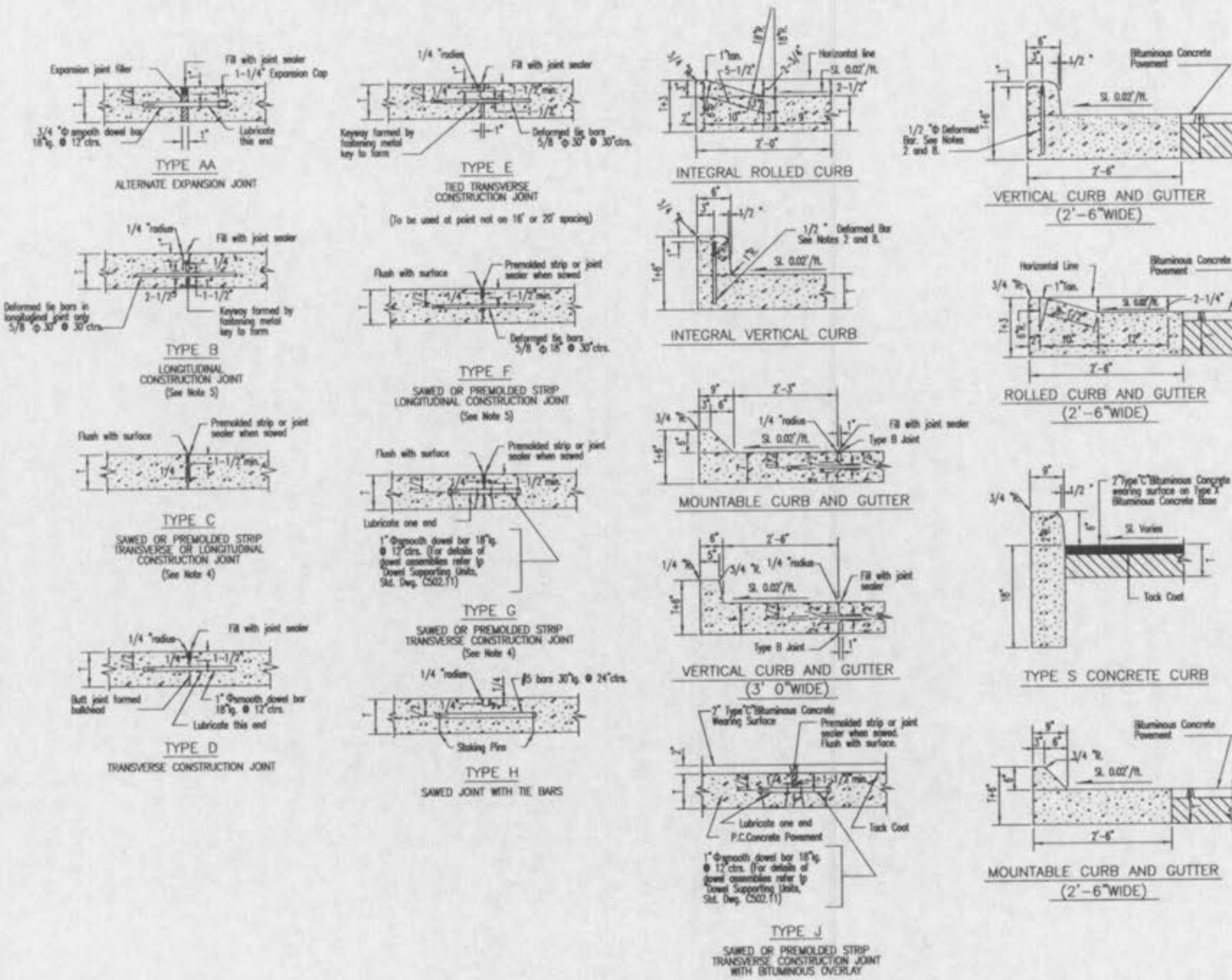


NOT TO SCALE

NOTES:

- THE NUMBER OF BACKER RODS REQUIRED WILL VARY WITH THE PAVEMENT THICKNESS. BACKER RODS AND FLEXIBLE FOAM FILLER MUST EXTEND THROUGH THE FULL DEPTH OF THE PAVEMENT.
- JOINT FILLER SHALL BE A FLEXIBLE, NON-ABSORBENT, NON-GASSING, NON-STAINING, NON-SHRINKING MATERIAL, EXTRUDED FROM A CLOSED-CELL POLYMER, ASTM D-5249.
- JOINT FILLER COMPOSED OF CELLULAR FIBERS, ASTM D-1751, MAY BE USED AT DRIVEWAY, SIDEWALK, AND SEWER INLET AND MANHOLE LOCATIONS.
- SEE "INTEGRAL CURB DETAIL "B" AT DRIVEWAYS" FOR EXPANSION JOINT REQUIREMENTS AT DRIVEWAY CONNECTIONS TO THE STREET AND THE GARAGE.

SAINT CHARLES COUNTY HIGHWAY DEPARTMENT ST. CHARLES, MISSOURI	DRAWING CS02.04
PAVEMENT CONSTRUCTION DETAILS	DATE: May, 2002
Type "A" Expansion Joint	



GENERAL NOTES

- Do not scale drawing. Follow dimensions.
- Construction joint and tie bars may be omitted when curb is poured integral with pavement.
- Minimum Thickness for Pavement in Bituminous Concrete Pavement Thickness = (1) All Residential Arterial and Local Streets 7'-1/2" Residential Collector and Non-Residential Streets 7" All Arterial Streets 8" 12"
- Type "C" Transverse Joint is required for Arterial and Non-Residential Streets. Use Type "C" Transverse Joint for all others.
- For Subdivision or other "Specialty" housing concrete pavement 1/2" ϕ deformed bar 30" long of 30" centers shall be used for Type "B" longitudinal joints and 1/2" ϕ deformed bar 18" long of 30" centers shall be used for Type "A" longitudinal joints.
- Refer to Pavement Construction Details for Integral Vertical Curb and Concrete Pavement (Typical Sections and Details, Std. Dep. CS02.01) and Integral Rolled Curb and Concrete Pavement (Typical Sections and Details, Std. Dep. CS02.02) for joint and bar requirements for different street classifications. Note that width and location of each required portion of the pavement may change the type and location of joint required.
- All deformed bars for joints and curbs shall be 18" Steel Bars conforming to A.S.T.M. A615-73, Grade 60.
- Length of the tie bars shall equal the thickness of pavement plus the height of curb less 2". Tie bars shall be placed at 24" centers.
- Transverse or longitudinal construction joints in slip formed pavements may be made with a groover or lock, if such device has been approved in advance by the Department.
- The free end of the deformed bar for a length of at least 11 inches shall be coated with an approved graphite grease.
- All deformed bars 18" \times 12" cts. shall be epoxy coated.

SAINT CHARLES COUNTY HIGHWAY DEPARTMENT ST. CHARLES, MISSOURI	DRAWING CS02.03
PAVEMENT CONSTRUCTION DETAILS	DATE: September, 2002
JOINTS AND CURBS	

O'Fallon File Number 1002.02

HIDDEN CREEK PAVEMENT DETAILS

ST. CHARLES ENGINEERING & SURVEYING, INC.
801 S. FIFTH STREET, SUITE 202
ST. CHARLES, MO 63301
TEL: (636) 947-0607 FAX: (636) 947-2448



ORDER NO. 02-0162
DATE 08-21-03
D-1