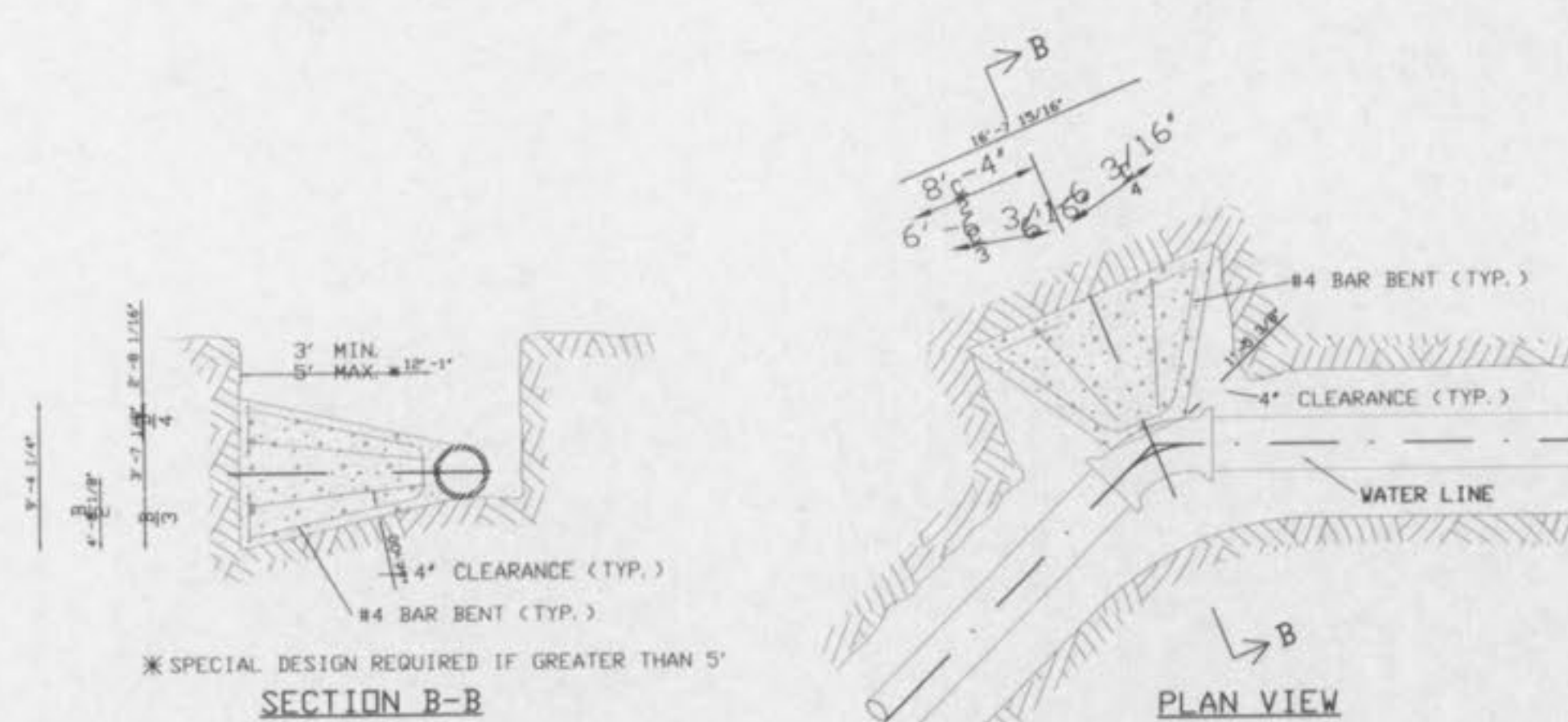
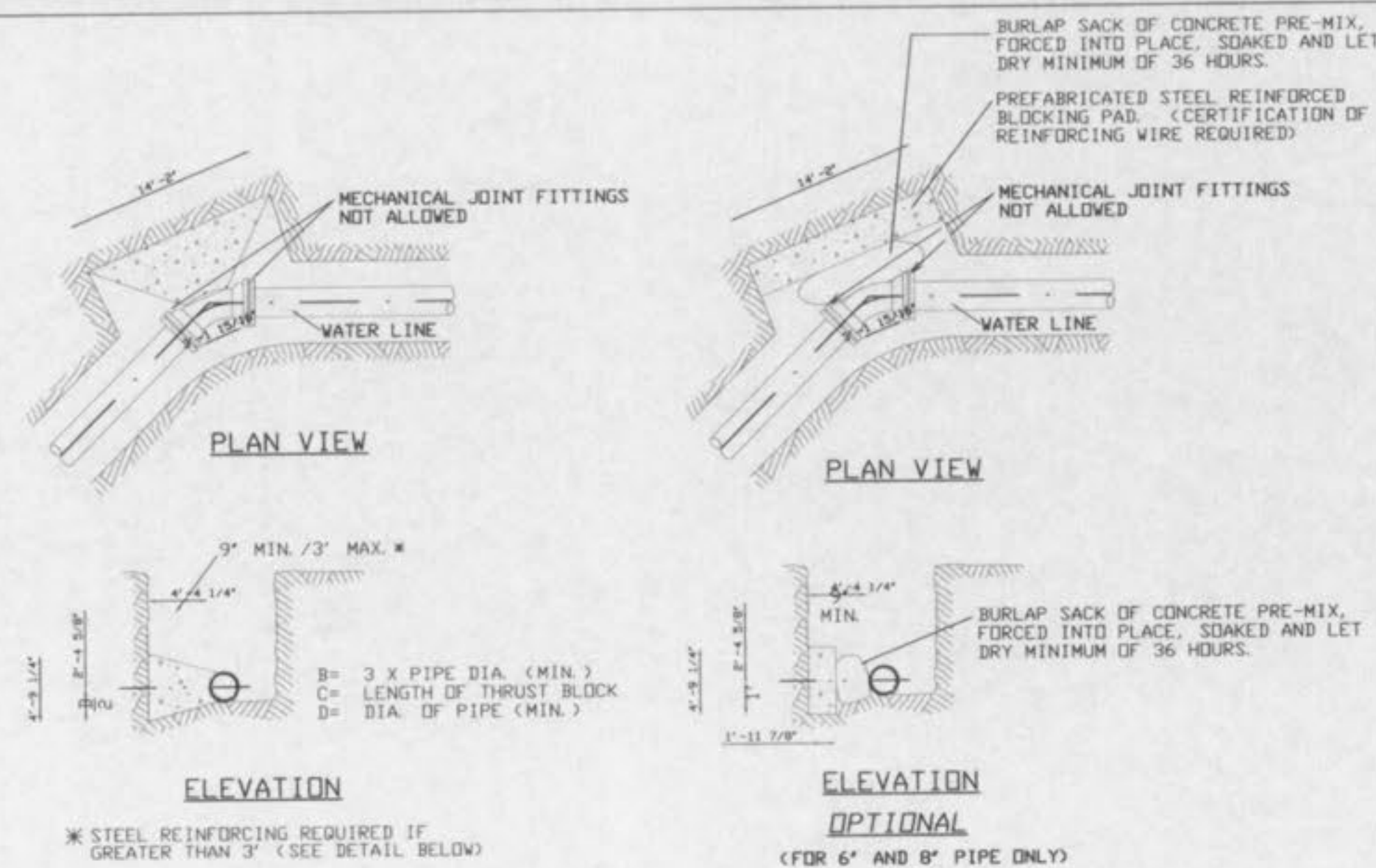


GENERAL RULES

- 1) CONNECTIONS TO AC (TRANSITE PIPE) REQUIRE AN EXCAVATION 6 FT. IN WIDTH ALONG THE MAIN. "D" DIMENSION (MAIN SIZE) IS VARIABLE.
- 2) ALL EXCAVATIONS SHALL COMPLY WITH ALL FEDERAL, STATE, AND LOCAL REGULATIONS FOR PROTECTION OF WORKERS.
- 3) IF PIPE BELL IS EXPOSED IN TAP HOLE OR OTHER OBSTACLES ENCOUNTERED, CALL 991-3404 FOR FIELD REVIEW BEFORE COMPLETING EXCAVATION.
- 4) TAP HOLE SHOULD BE FREE OF WATER AND MUD TO ALLOW SAFE HANDLING OF HEAVY SLEEVES AND TAPPING MACHINE.

TYPICAL INSTALLATION @ PATENT TAP CONNECTION
N.T.S.



THRUST BLOCK DETAILS @ HORIZONTAL BENDS
N.T.S.

GENERAL NOTES:

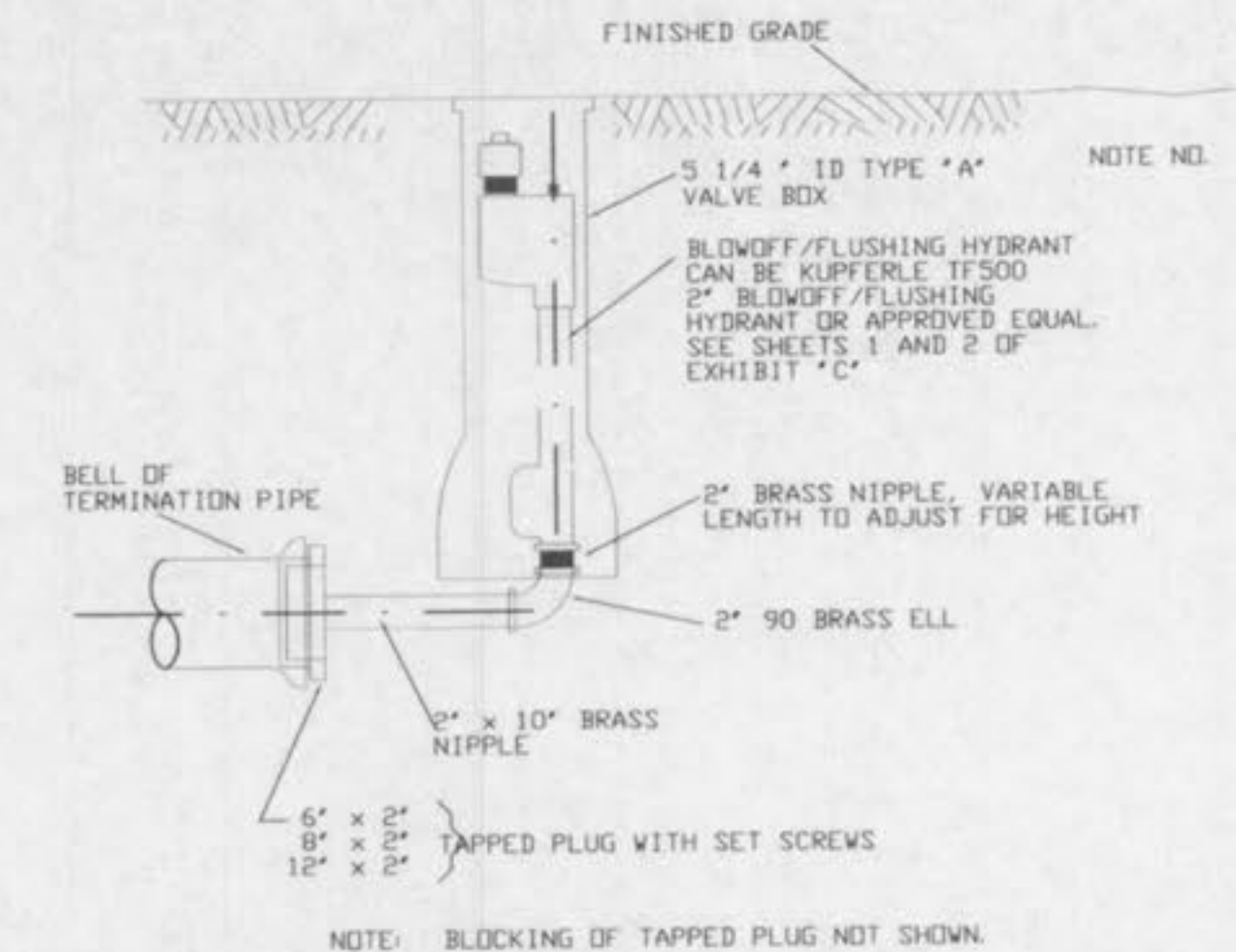
1. COVER OVER TOP OF PIPE SHALL BE 42" MINIMUM, 72" MAXIMUM. IF GRADING PLANS RECEIVED BY SLCWC WITH THE REQUEST FOR WATER MAIN LAYOUT, INDICATE ADJUSTMENTS TO EXISTING GRADE, THEN PIPE SHALL BE INSTALLED TO MEET MINIMUM AND MAXIMUM COVER FROM PROPOSED GRADES SHOWN ON SAID PLANS.
2. THRUST BLOCKS SHALL BE BUILT AGAINST UNDISTURBED SOIL WITH ADEQUATE BACKING TO PREVENT MOVEMENT OF FITTING.
3. NO THRUST BLOCKS TO BE PLACED IN SEWER LATERAL DITCHES.
4. THRUST BLOCKING MUST FIT IN EASEMENT.

MINIMUM BEARING AREA IN SQUARE FEET *

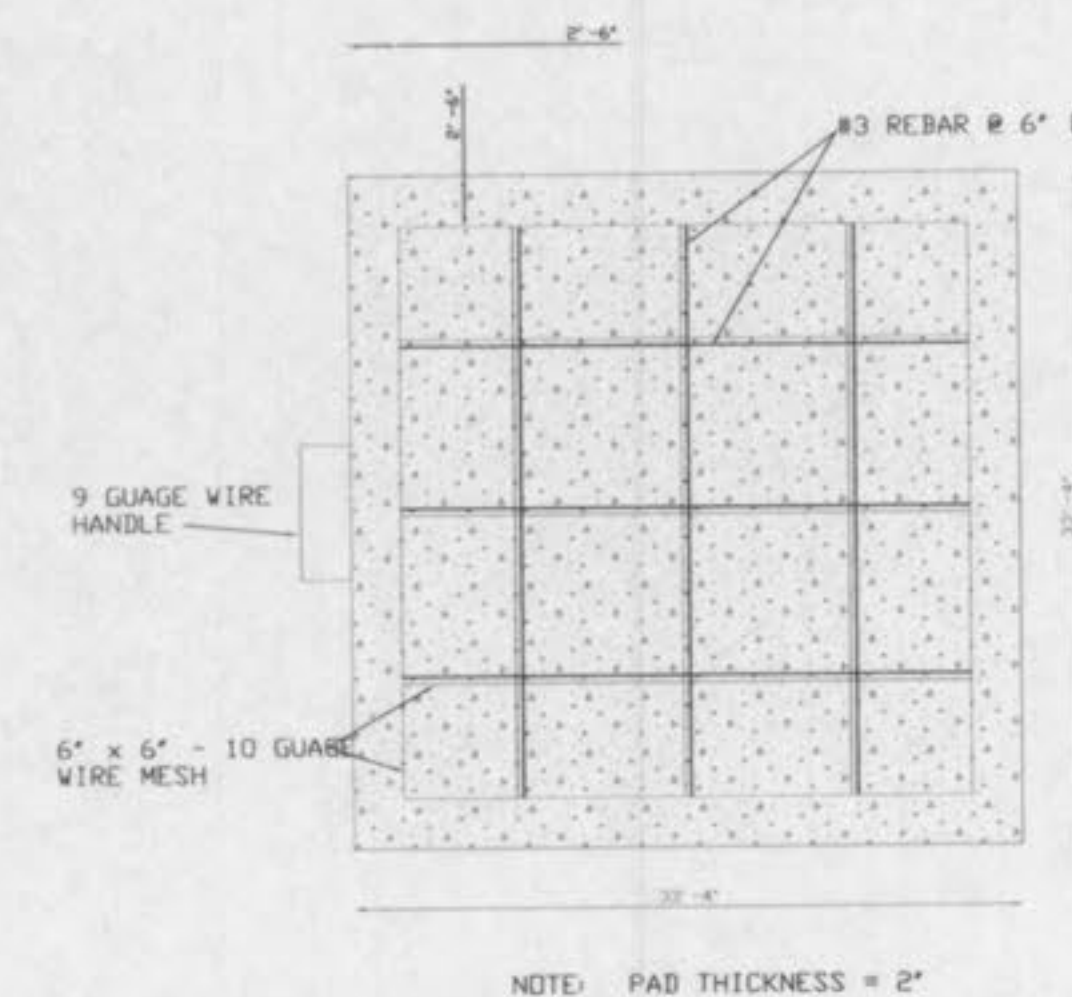
PIPE SIZE	BENDS (DEGREES)					TEE	END
	11-1/4	22-1/2	45	90	DEAD		
6"	1.0	2.5	4.5	8.0	5.5	5.5	
8"	2.0	4.0	7.5	14.0	10.0	10.0	
12"	4.0	8.0	16	29.0	20.5	20.5	

* BEARING AREAS ARE BASED ON SOIL HAVING AN ALLOWABLE SAFE LATERAL BEARING OF 1 TON PER SQUARE FOOT. AREA MUST BE REVISED FOR SOILS WITH A LOWER BEARING CAPACITY.

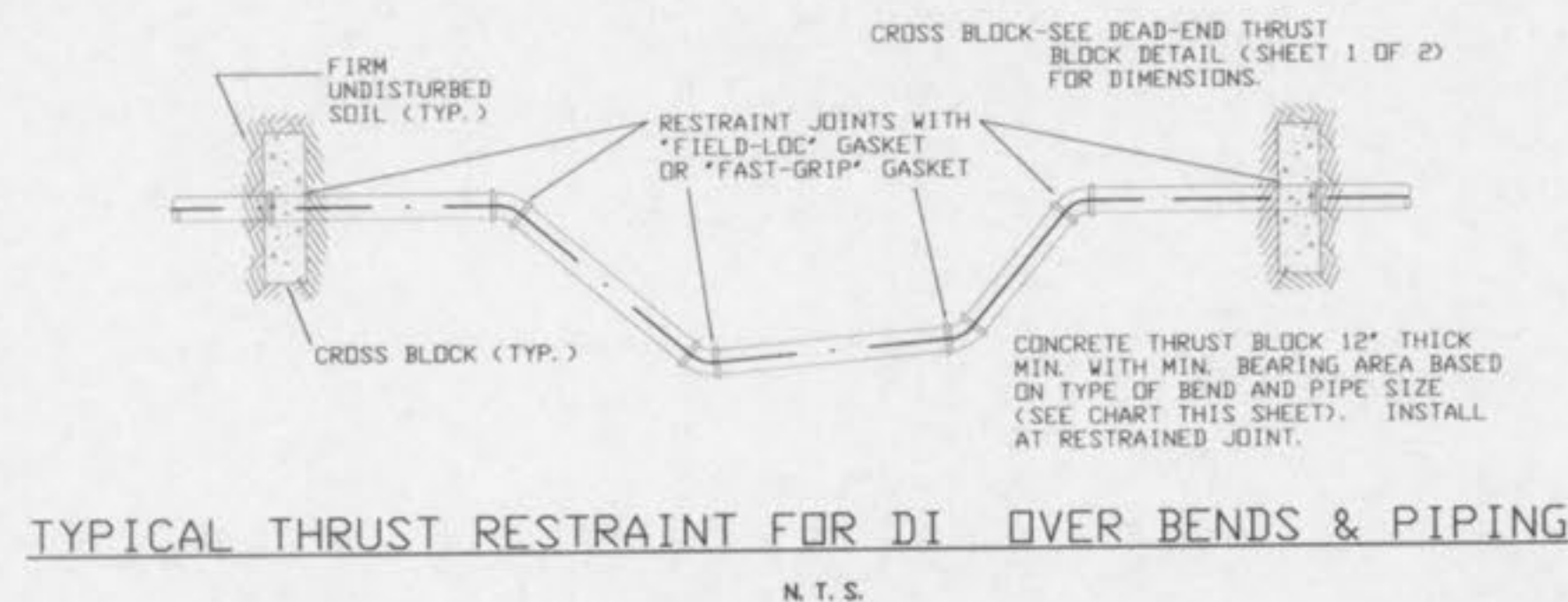
* NOTE: POLYETHYLENE ENCASING ON ALL D. I. PIPE



TYPICAL BLOWOFF/FLUSHING HYDRANT ASSEMBLY
N.T.S.



PREFABRICATED STEEL REINFORCED CONCRETE BLOCKING PAD DETAIL
N.T.S.

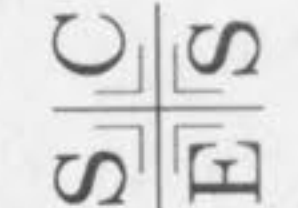


TYPICAL THRUST RESTRAINT FOR DI OVER BENDS & PIPING
N.T.S.

NO.	DATE	DESCRIPTION OF REVISION	BY
WATER MAIN INSTALLATION DETAILS			
SCALE: NOT TO SCALE	FILE NO.	DRAWING NO.	
DRAWN: LJT	V.D. NO.	2	
CHECKED: MC	DATE: 10/2001	OF 2	
CAD /DISTRIB/DETAILS/MDAWMAIN2.DGN			

HIDDEN CREEK WATER DETAILS 2

ST. CHARLES ENGINEERING & SURVEYING, INC.
801 S. FIFTH STREET, SUITE 202
ST. CHARLES, MO 63301
TEL: (636) 947-0607 FAX: (636) 947-2448



ORDER NO. 02-0162
DATE 03/21/03

D-9