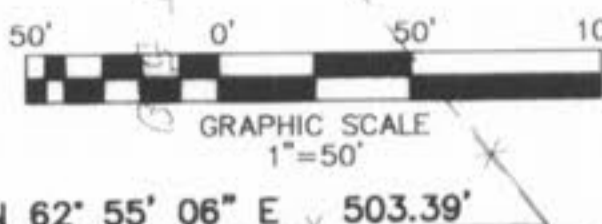


MONTICELLO VILLAGE "D"
P.B. 30 PGS. 337-339

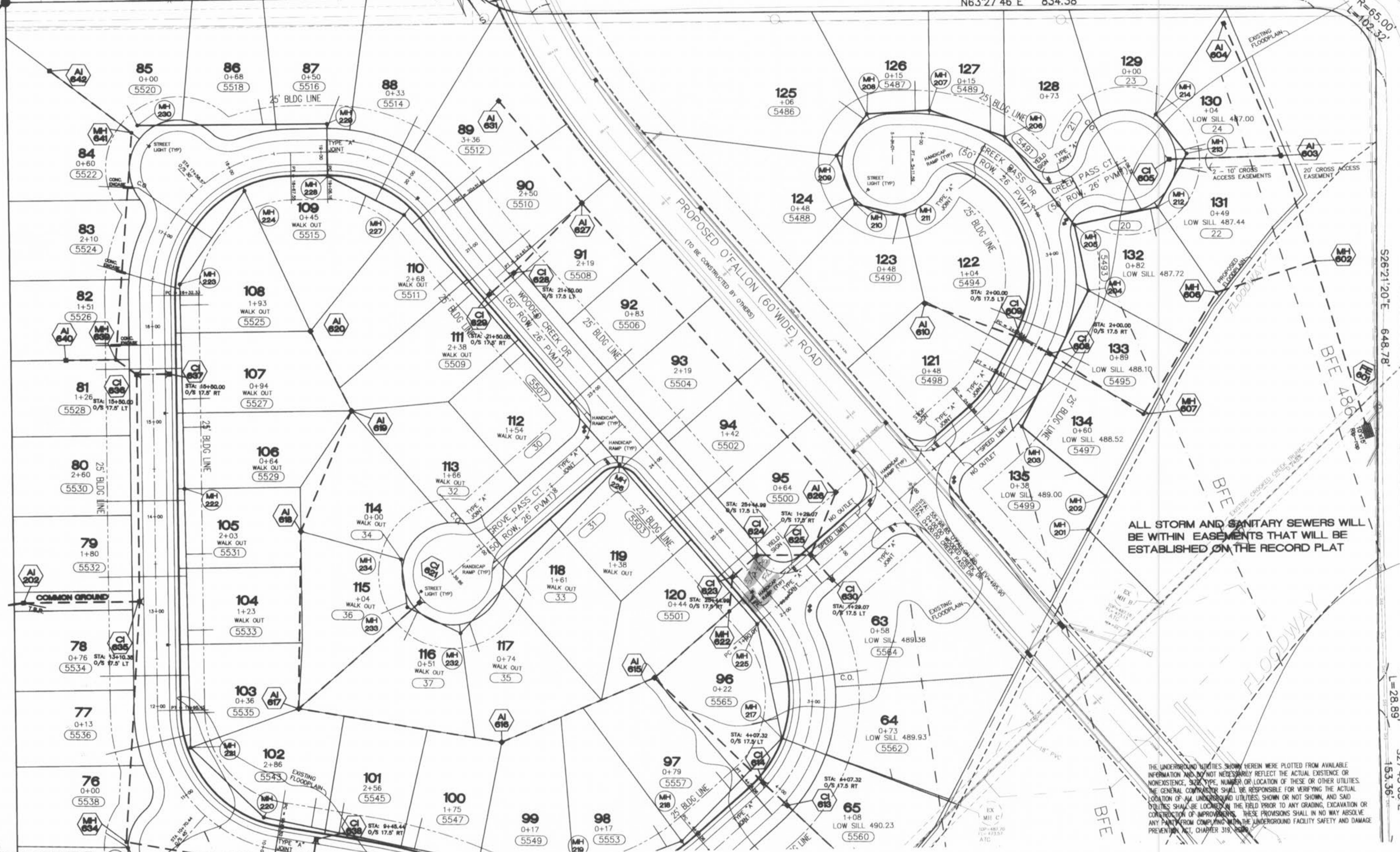
MONTICELLO ESTATES PLAT 1
P.B. 31 PG. 121



O'FALLON (VARIABLE WIDTH) ROAD

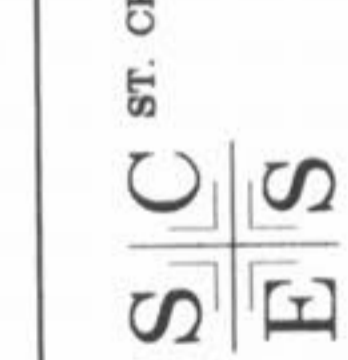
N63°27'46"E 834.38'

ST. CHARLES COUNTY HAS NO PLANS TO VACATE THE EXISTING O'FALLON ROAD RIGHT-OF-WAY AT THIS TIME. THEY WILL THEREFORE CONTINUE TO MAINTAIN IT.



FLAT PLAN
HIDDEN CREEK
PHASE 2

ST. CHARLES ENGINEERING & SURVEYING, INC.
801 S. FIFTH STREET, SUITE 202
ST. CHARLES, MO 63301
TEL: (636) 947-0607 FAX: (636) 947-2448



ORDER NO. 02-0162-01
DATE 12/15/08
PH2-2

THE UNDERGROUND UTILITIES SHOWN HEREIN WERE PLOTTED FROM AVAILABLE INFORMATION AND DO NOT NECESSARILY REFLECT THE ACTUAL EXISTENCE OR NONEXISTENCE, SIZE, TYPE, NUMBER OR LOCATION OF THESE OR OTHER UTILITIES. THE GENERAL CONTRACTOR SHALL BE RESPONSIBLE FOR VERIFYING THE ACTUAL LOCATION OF ALL UNDERGROUND UTILITIES, SHOWN OR NOT SHOWN, AND SAID UTILITIES SHALL BE LOCATED IN THE FIELD PRIOR TO ANY GRADING, EXCAVATION OR CONSTRUCTION OF IMPROVEMENTS. THESE PROVISIONS SHALL IN NO WAY ABSOLVE ANY PARTY FROM COMPLYING WITH THE UNDERGROUND FACILITY SAFETY AND DAMAGE PREVENTION ACT, CHAPTER 319, RSMO.

O'FALLON FILE
NUMBER 1002.02

R=1215.00'
L=28.89'
S27°43'05"E
153.36'

S26°21'20"E 648.78'

R=65.00'
L=102.32'