

MONTICELLO VILLAGE "D"
P.B. 30 PGS. 337-339

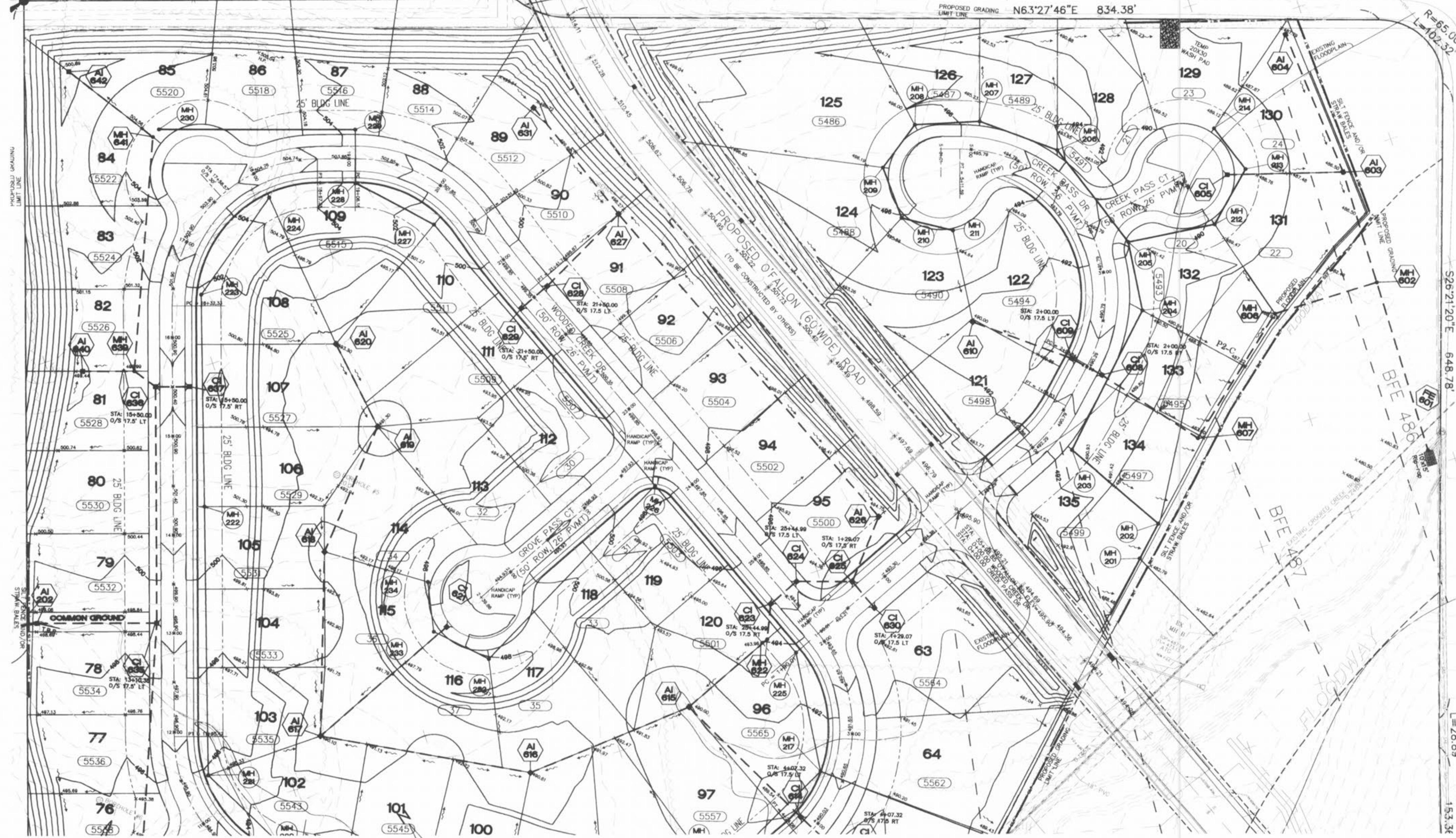
N 82° 55' 06" E 503.39'

O'FALLON (VARIABLE WIDTH) ROAD

MONTICELLO ESTATES PLAT I
P.B. 31 PG. 121

PROPOSED GRADING
LIMIT LINE N63°27'46"E 834.38'

R=65.00
L=102.32



REVISION	DATE
REVISED AS PER COMMENTS	07/16/04
REVISED AS PER COMMENTS	03/19/04
REVISED AS PER COMMENTS	03/09/04

GRADING PLAN HIDDEN CREEK

S26°21'20"E 648.78'

L=28.89

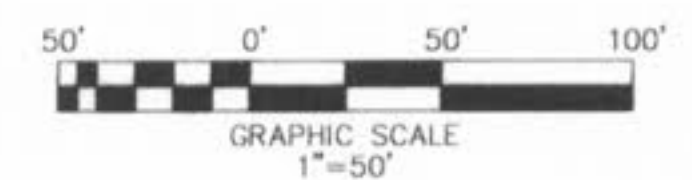
153.36

ST. CHARLES ENGINEERING & SURVEYING, INC.
801 S. FIFTH STREET, SUITE 202
ST. CHARLES, MO 63301
TEL: (636) 947-0607 FAX: (636) 947-2445



ORDER NO.	02-0162-01
DATE	12/15/08
PH2-4	

O'FALLON FILE
NUMBER 1002.02



THE UNDERGROUND UTILITIES SHOWN HEREIN WERE PLOTTED FROM AVAILABLE INFORMATION AND DO NOT NECESSARILY REFLECT THE ACTUAL EXISTENCE OR NONEXISTENCE, SIZE, TYPE, NUMBER OR LOCATION OF THESE OR OTHER UTILITIES. THE GENERAL CONTRACTOR SHALL BE RESPONSIBLE FOR VERIFYING THE ACTUAL LOCATION OF ALL UNDERGROUND UTILITIES, SHOWN OR NOT SHOWN, AND SAID UTILITIES SHALL BE LOCATED IN THE FIELD PRIOR TO ANY GRADING, EXCAVATION OR CONSTRUCTION OF IMPROVEMENTS. THESE PROVISIONS SHALL IN NO WAY ABSOLVE ANY PARTY FROM COMPLYING WITH THE UNDERGROUND FACILITY SAFETY AND DAMAGE PREVENTION ACT, CHAPTER 319, RSMO.