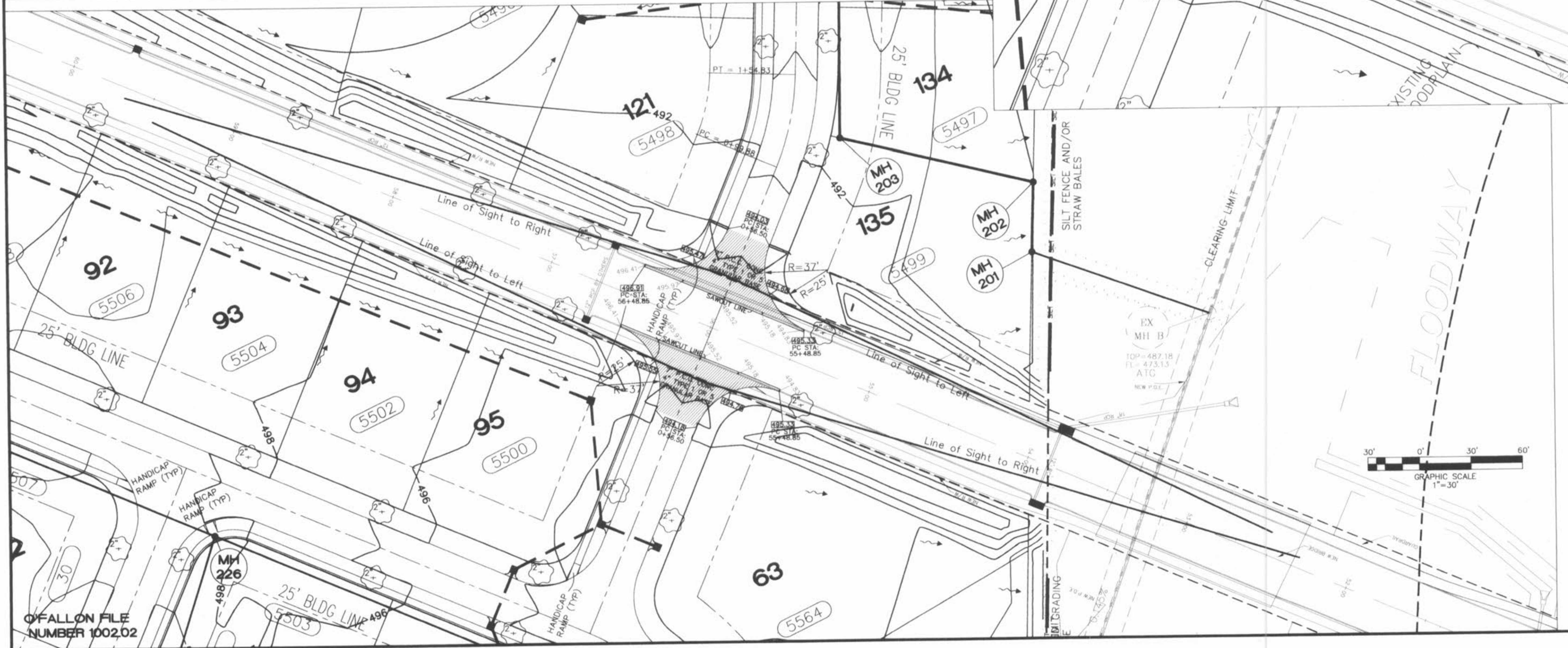
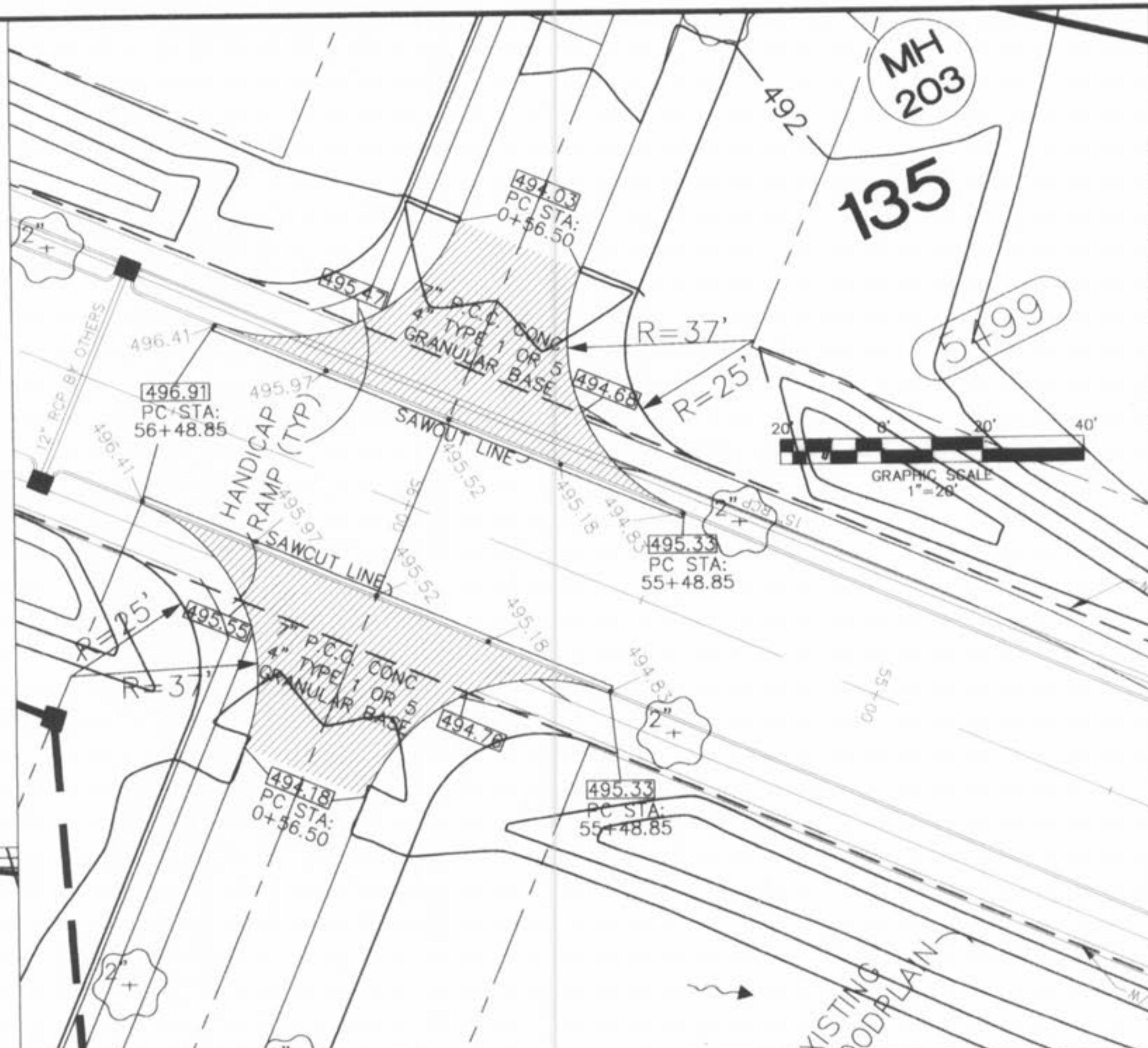
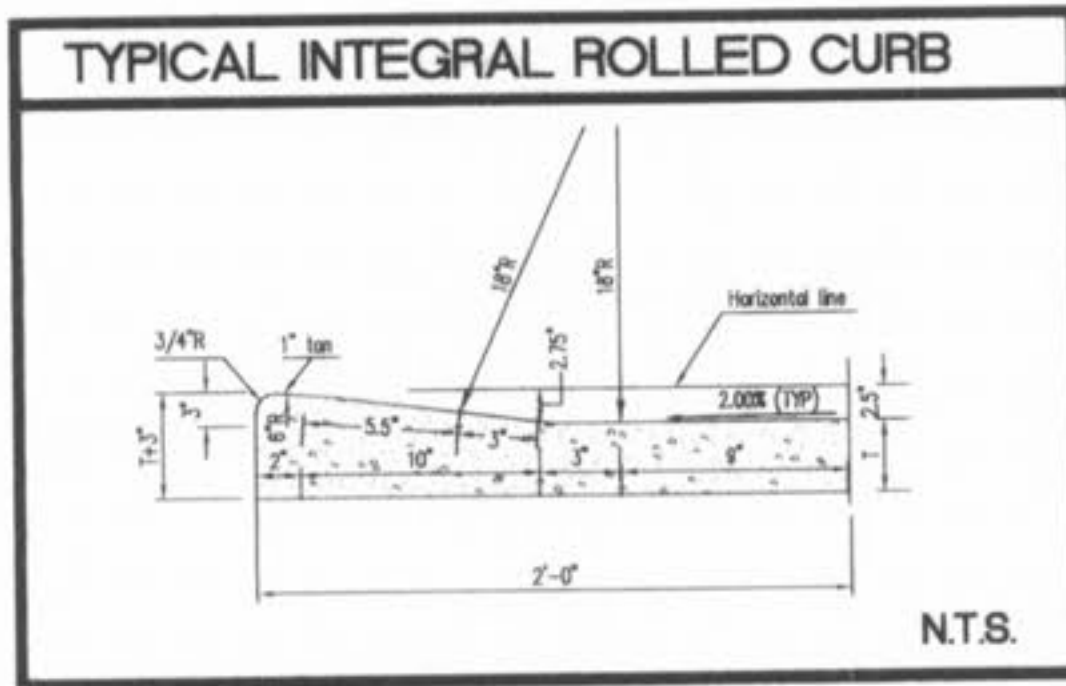


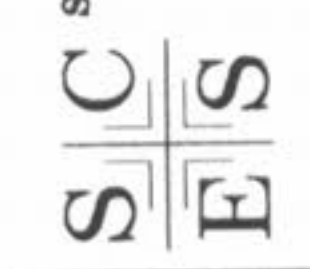
NOTE:
ENTRANCES TO BE BUILT WHEN ST. CHARLES COUNTY BUILD THE NEW OFALLON ROAD. NO TEMPORARY ENTRANCES TO BE BUILT ALONG THE NEW OFALLON ROAD ALIGNMENT.



02/19/04	REVISED AS PER COMMENTS
03/12/04	REVISED AS PER COMMENTS
04/27/04	REVISED AS PER COMMENTS

**ENTRANCE PLAN
HIDDEN CREEK
PHASE 2**

ST. CHARLES ENGINEERING & SURVEYING, INC.
801 S. FIFTH STREET, SUITE 202
ST. CHARLES, MO 63301
TEL: (636) 947-0607 FAX: (636) 947-2446



ORDER NO.	02-0162-01
DATE	12/15/03
PH2-8A	

OFALLON FILE
NUMBER 1002,02

