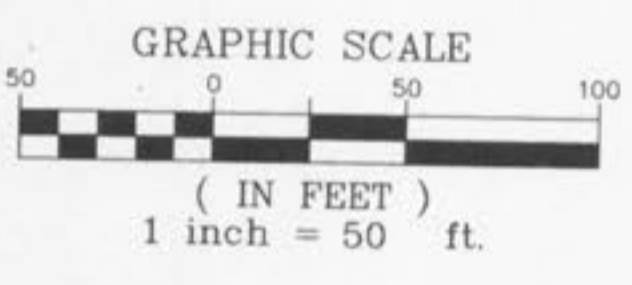
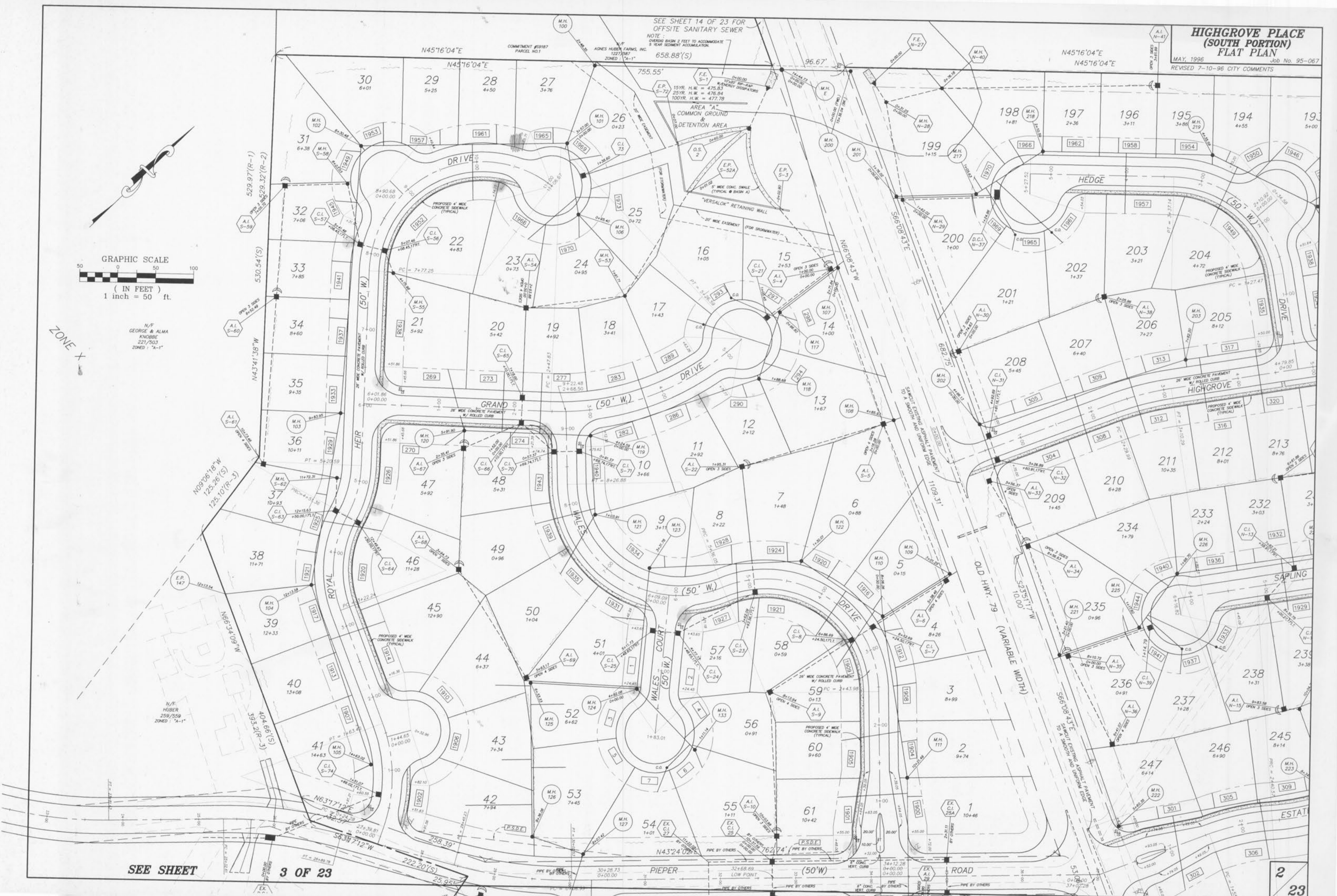


**HIGHGROVE PLACE (SOUTH PORTION) FLAT PLAN**  
MAY, 1996 Job No. 95-067  
REVISED 7-10-96 CITY COMMENTS

SEE SHEET 14 OF 23 FOR OFFSITE SANITARY SEWER  
NOTE: OVERFLOW BASIN 2 FEET TO ACCOMMODATE 5 YEAR SEDIMENT ACCUMULATION.  
658.88'(S)



ZONE X  
N/F GEORGE & ALMA KNOBBS 221/503 ZONED: "A-1"



SEE SHEET

3 OF 23

23