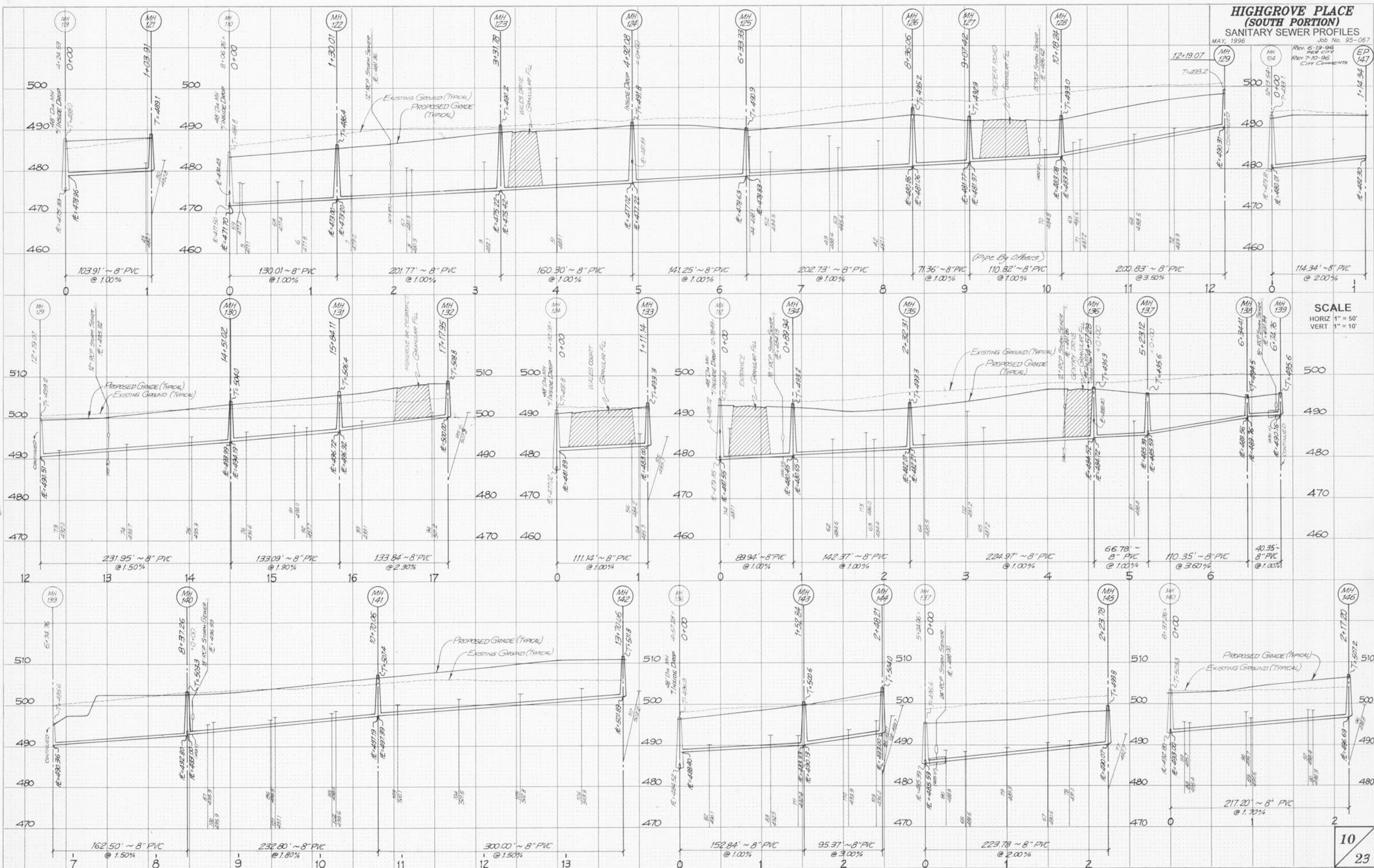


**HIGHGROVE PLACE
(SOUTH PORTION)
SANITARY SEWER PROFILES**

MAY, 1996
Job No. 95-067
Rev. 5-19-96
Rev. 7-10-96
CITY COMMENTS

FINAL
SURVEY
NOTE BOOK
NO.

ORIGINAL
SURVEY
NOTE BOOK
NO.



SCALE
HORIZ 1" = 50'
VERT 1" = 10'