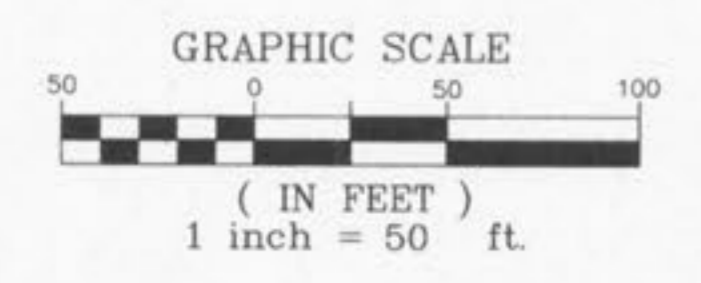
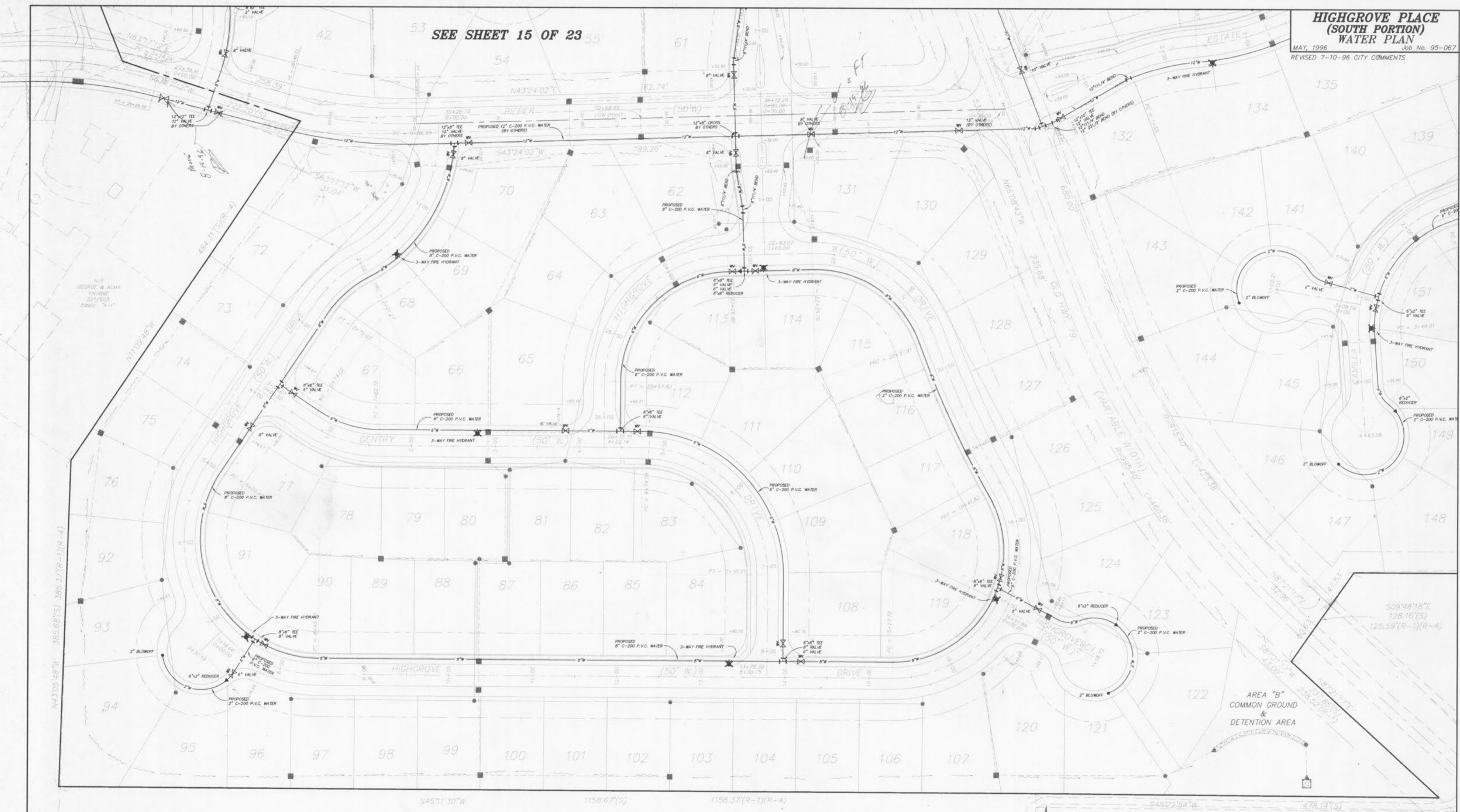


**HIGHGROVE PLACE  
(SOUTH PORTION)  
WATER PLAN**

MAY, 1996 Job No. 95-067  
REVISED 7-10-96 CITY COMMENTS

SEE SHEET 15 OF 23



N/P  
ADD: PHILIP S. BUSCH  
1544/1962  
ZONED "A-1"

N/P  
ADD: PHILIP S. BUSCH  
1693/894  
CITY OF ST. ALLEN  
UNZONED