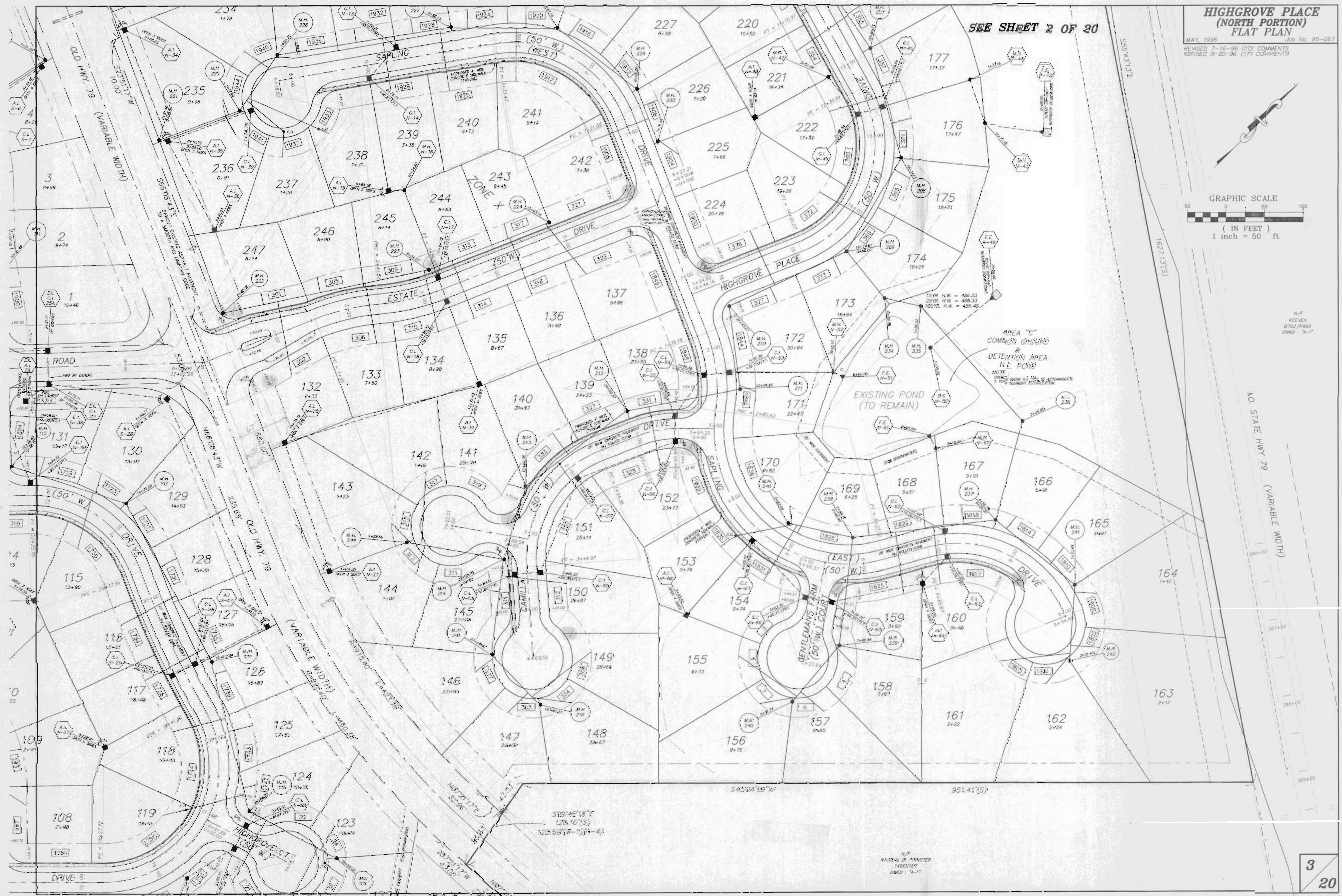
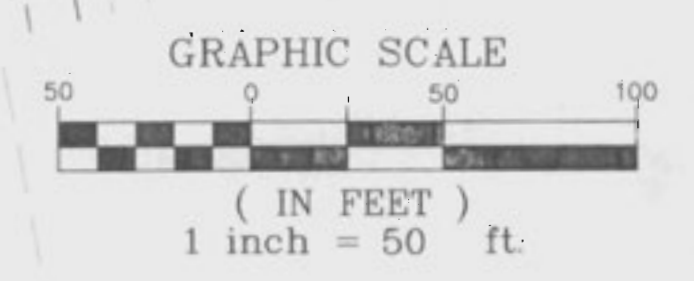


**HIGHGROVE PLACE
(NORTH PORTION)
FLAT PLAN**

MAY, 1996 Job No. 95-067
REVISED 7-16-96 CITY COMMENTS
REVISED 8-20-96 CITY COMMENTS

SEE SHEET 2 OF 20



N/F
KEEVEN
B762/P992
ZONED: "A-1"

N.O. STATE HWY 79
(VARIABLE WIDTH)

N/F
RAMDAIP PRINSTER
1496/189
ZONED: "A-1"