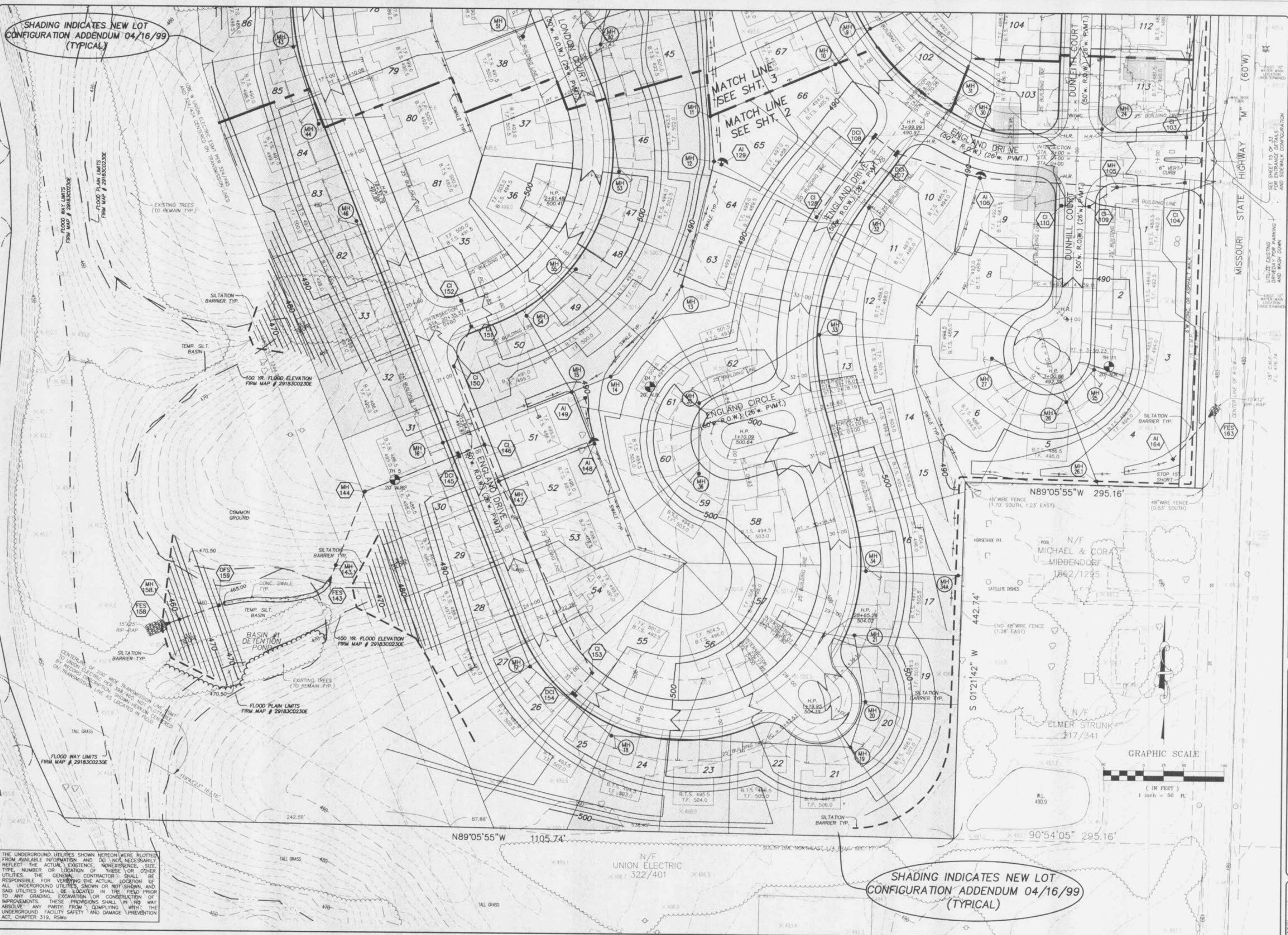


SHADING INDICATES NEW LOT CONFIGURATION ADDENDUM 04/16/99 (TYPICAL)



THE UNDERGROUND UTILITIES SHOWN HEREON WERE PLOTTED FROM AVAILABLE INFORMATION AND DO NOT NECESSARILY REFLECT THE ACTUAL EXISTENCE, SIZE, TYPE, NUMBER OR LOCATION OF THESE OR OTHER UTILITIES. THE GENERAL CONTRACTOR SHALL BE RESPONSIBLE FOR VERIFYING THE ACTUAL LOCATION OF ALL UNDERGROUND UTILITIES SHOWN OR NOT SHOWN, AND SAID UTILITIES SHALL BE LOCATED IN THE FIELD PRIOR TO ANY GRADING, EXCAVATION OR CONSTRUCTION OF IMPROVEMENTS. THESE PROVISIONS SHALL IN NO WAY ABSOLVE ANY PARTY FROM COMPLYING WITH THE UNDERGROUND FACILITY SAFETY AND DAMAGE PREVENTION ACT, CHAPTER 319, RSMo.

SHADING INDICATES NEW LOT CONFIGURATION ADDENDUM 04/16/99 (TYPICAL)

ISSUE REMARKS/DATE

- 10/27/98 GRADING PLAN SUBMITTAL
- 12/30/98 SUBMITTAL TO CITY OF OTTAWA
- 1/21/99 DEVELOPER REV.
- 03/01/99 PER CITY OF OTTAWA COMMENTS
- 03/26/99 PER CITY OF OTTAWA COMMENTS IN FULL
- 3/30/99
- 04/16/99 NEW LOT RECONFIG

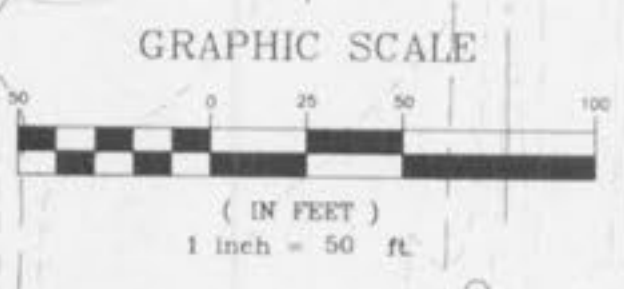
PREPARED FOR:
J.M.B. MILL CREEK L.L.C.
 5091 NEW BAUMGARTNER ROAD
 ST. LOUIS, MISSOURI 63129
 PHONE: (314) 487-6717



PREPARED BY:
STERLING
 ENGINEERS, SURVEYORS AND PLANNERS C.O.
 (314)-487-0440, FAX 487-8844

PROJECT: **ESTATES/VILLAS AT HIGHGROVE**
 SHEET TITLE: **GRADING PLAN**

NO.	98 02 036
M.S.D.	SHEET
P#	2
DIGITAL FILE LOCATION	OF 33



BASE MAP