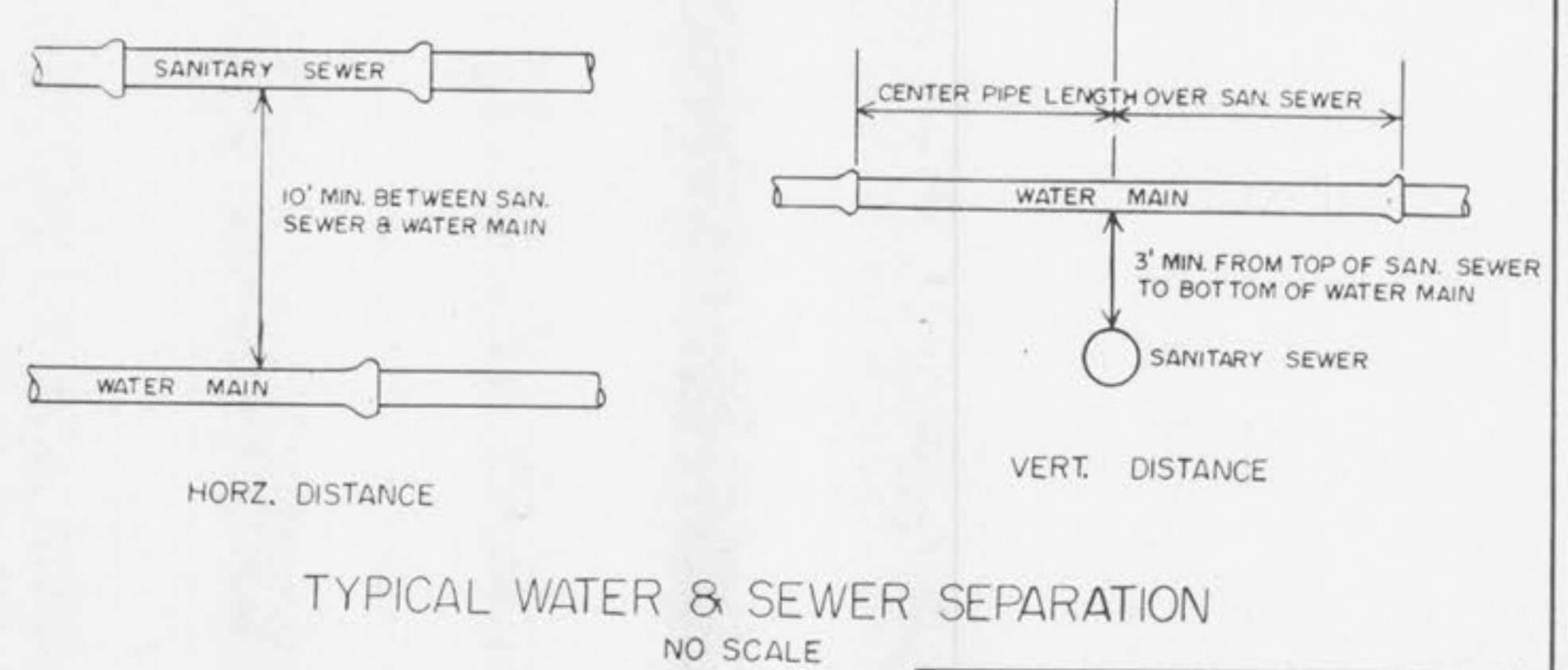
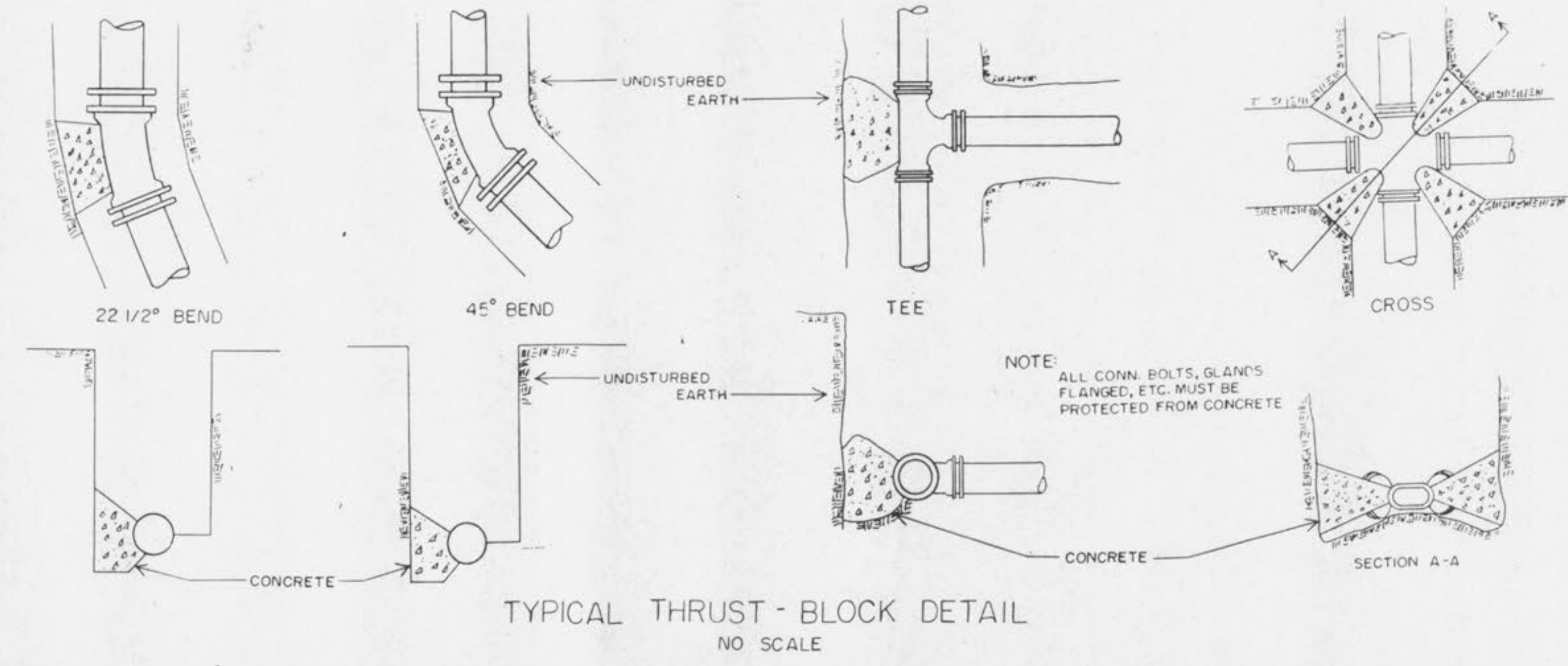


MAIN SIZE	MIN. THRUSTBLOCK BEARING DIMENSIONS TO BEAR AGAINST UNDISTURBED EARTH			
	45° BEND	22 1/2° BEND	TEE	CROSS
2"	.5'x1'	.5'x1'	.5'x1'	.5'x1'
4"	1'x1'	1'x1'	2'x1'	1'x1'
6"	1.5'x1'	1'x1'	2'x1'	1'x1'
8"	2'x1'	1'x1'	2'x2.5'	1'x1.5'
10"	2'x2.5'	1.5'x2'	2'x2'	2'x2'

**THRUST-BLOCK SCHEDULE**



THE UNDERGROUND UTILITIES SHOWN HEREON WERE PLOTTED FROM AVAILABLE INFORMATION AND DO NOT NECESSARILY REFLECT THE ACTUAL EXISTENCE, NONEXISTENCE, SIZE, TYPE, NUMBER OR LOCATION OF THESE OR OTHER UTILITIES. THE GENERAL CONTRACTOR SHALL BE RESPONSIBLE FOR VERIFYING THE ACTUAL LOCATION OF ALL UNDERGROUND UTILITIES, SHOWN OR NOT SHOWN, AND SAID UTILITIES SHALL BE LOCATED IN THE FIELD PRIOR TO ANY GRADING, EXCAVATION OR CONSTRUCTION OF IMPROVEMENTS. THESE PROVISIONS SHALL IN NO WAY ABSOLVE ANY PARTY FROM COMPLYING WITH THE UNDERGROUND FACILITY SAFETY AND DAMAGE PREVENTION ACT, CHAPTER 319, RSMo.

ISSUE REMARKS/DATE  
5/28/2019 DETAILS, TRACE WIRE FLUSH HYDRANT, THEADED TEE RODS.

PREPARED FOR:  
**J.M.B. MILL CREEK L.L.C.**  
5091 NEW BAUMGARTNER ROAD  
ST. LOUIS, MISSOURI 63129  
PHONE: (314) 487-6717

PREPARED BY:  
**STERLING**  
ENGINEERS, SURVEYORS AND PLANNERS CO.  
5055 NEW BAUMGARTNER ROAD  
ST. LOUIS, MISSOURI 63129  
(314)-487-6440, FAX 487-8944

PROJECT: **ESTATES/VILLAS AT HIGHGROVE**  
SHEET TITLE: **WATER LINE DETAILS**  
NO. **98 02 036**  
M.S.D. **WD1**  
P# **WD1**  
DIGITAL FILE LOCATION: **SERVER:STORING-1**  
WORKSPACE: **STORING-1**