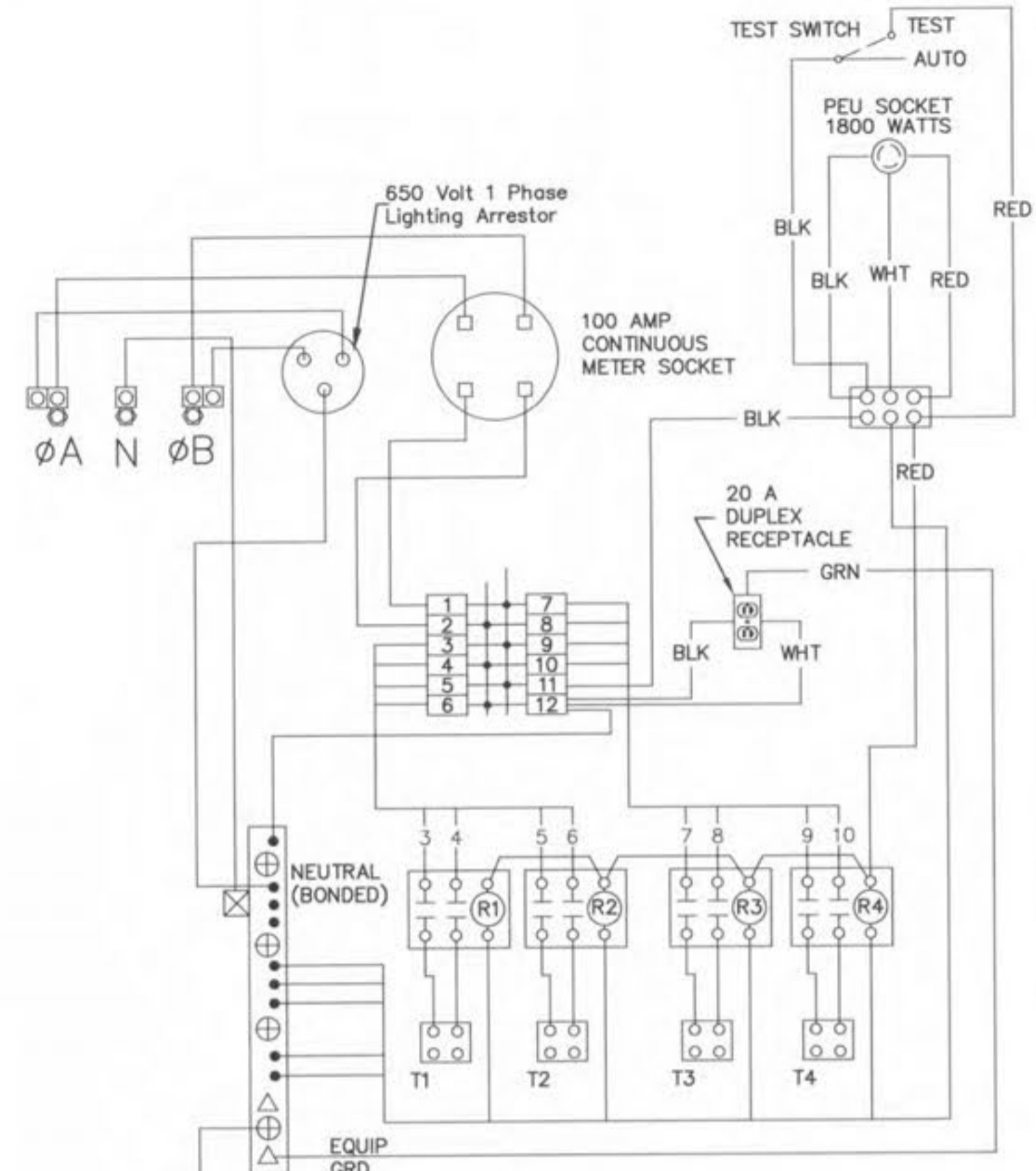


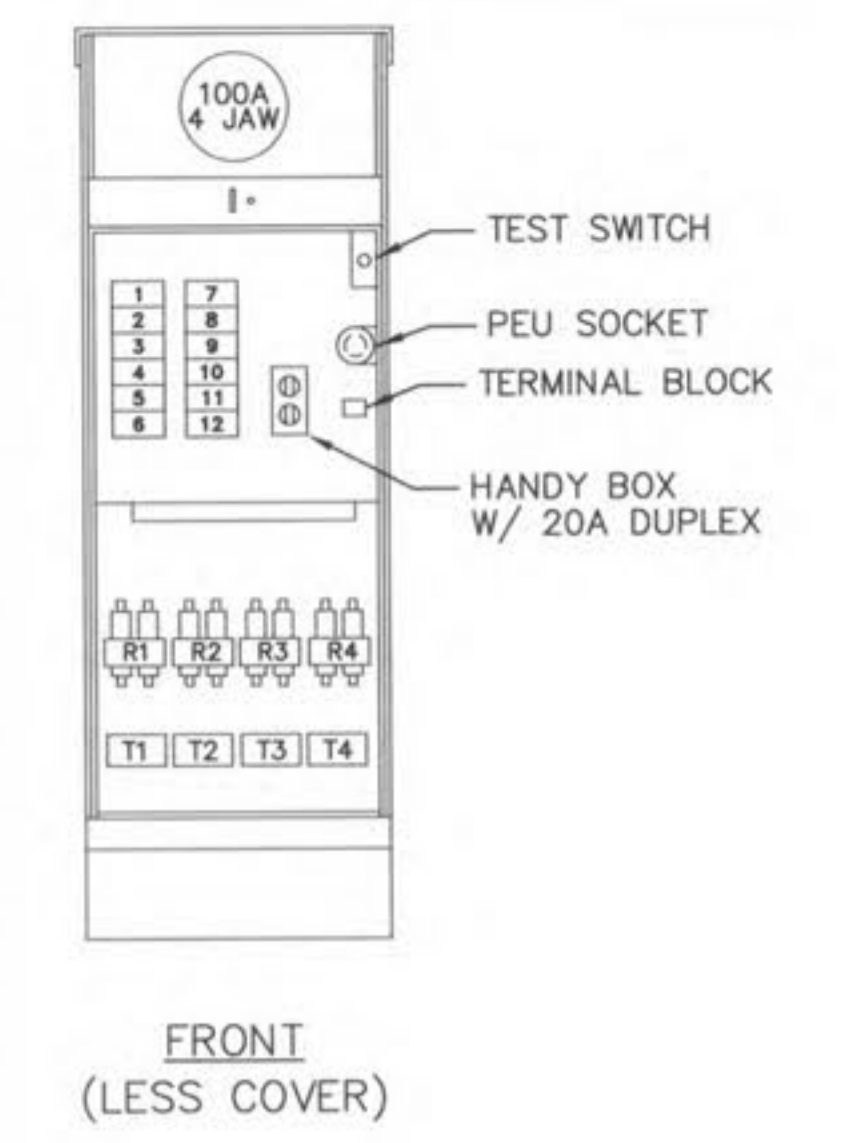
SUMMARY OF STREET LIGHTING QUANTITIES *		
ITEM	UNIT	QUANTITY
15' SQUARE STRAIGHT STEEL POLE	EACH	44
15' SQUARE STRAIGHT STEEL POLE W/ TWIN BRACKETS	EACH	-
15' ALUMINUM POLE (DESIGNATION)	EACH	-
15' ALUMINUM POLE (DESIGNATION)	EACH	-
15' FIBERGLASS POLE W/ 8" BRACKET ARM (ANCHOR BASE)	EACH	-
15' FIBERGLASS POLE W/ 6" BRACKET ARM (DIRECT BURIAL)	EACH	-
15' FIBERGLASS POLE W/ 6" BRACKET ARM (ANCHOR BASE)	EACH	-
15' FIBERGLASS POLE (ANCHOR BASE)	EACH	-
15' FIBERGLASS POLE (DIRECT BURIAL)	EACH	-
CONCRETE FOUNDATION FOR 15' POLE (TYPE I)	EACH	-
CONCRETE FOUNDATION FOR 15' POLE (TYPE II)	EACH	-
CONCRETE FOUNDATION FOR 15' POLE	EACH	-
TYPE 1 SCREW IN FOUNDATION	EACH	44
TYPE 2 SCREW IN FOUNDATION	EACH	-
TYPE 3 SCREW IN FOUNDATION	EACH	-
TYPE T2 SCREW IN FOUNDATION	EACH	-
GROUND ROD	EACH	44
LUMINAIRE 70 WATT HPS	EACH	44
COBRA HEAD LUMINAIRE WATT H.P.S.	EACH	-
FITTER (PURGATORY)	EACH	-
LAMP POST CROSS ARM	EACH	-
TYPE I JUNCTION BOX	EACH	16
TYPE II JUNCTION BOX	EACH	-
SERVICE BOX	EACH	-
CONTROL CENTER - POLE MOUNTED	EACH	-
CONTROL CENTER - PAD MOUNTED	EACH	1
CONTROL CENTER FOUNDATION	EACH	1
CONTROL CENTER GROUND ROD	EACH	1
PHOTO CELL (DELAY TYPE)	EACH	-
2" METALLIC CONDUIT (BORED)	LN. FT.	-
3" METALLIC CONDUIT	LN. FT.	-
2" SCHEDULE 40 P.V.C. CONDUIT (BORED)	LN. FT.	290
2" SCHEDULE 40 P.V.C. CONDUIT (TRENCHED)	LN. FT.	100
2" SCHEDULE 40 P.V.C. CONDUIT (BRIDGE)	LN. FT.	150
1c No. 4 TYPE USE DISTRIBUTION CABLE	LN. FT.	9280
1c No. 8 BARE GROUND NEUTRAL	LN. FT.	4740
1c No. 10 POLE AND BRACKET CABLE	LN. FT.	1320
1c No. 4 POWER CABLE	LN. FT.	100
CONNECTOR KIT, FUSED	EACH	88
CONNECTOR KIT, UNFUSED	EACH	44
FARGO CONNECTORS	EACH	132
CONDUIT MARKERS	EACH	-

* THESE APPROXIMATE QUANTITIES WERE PREPARED SOLELY FOR THE CONTRACTOR'S CONVENIENCE AND ARE NOT GUARANTEED TO BE A COMPLETE LIST OF MATERIALS FOR THIS PROJECT.

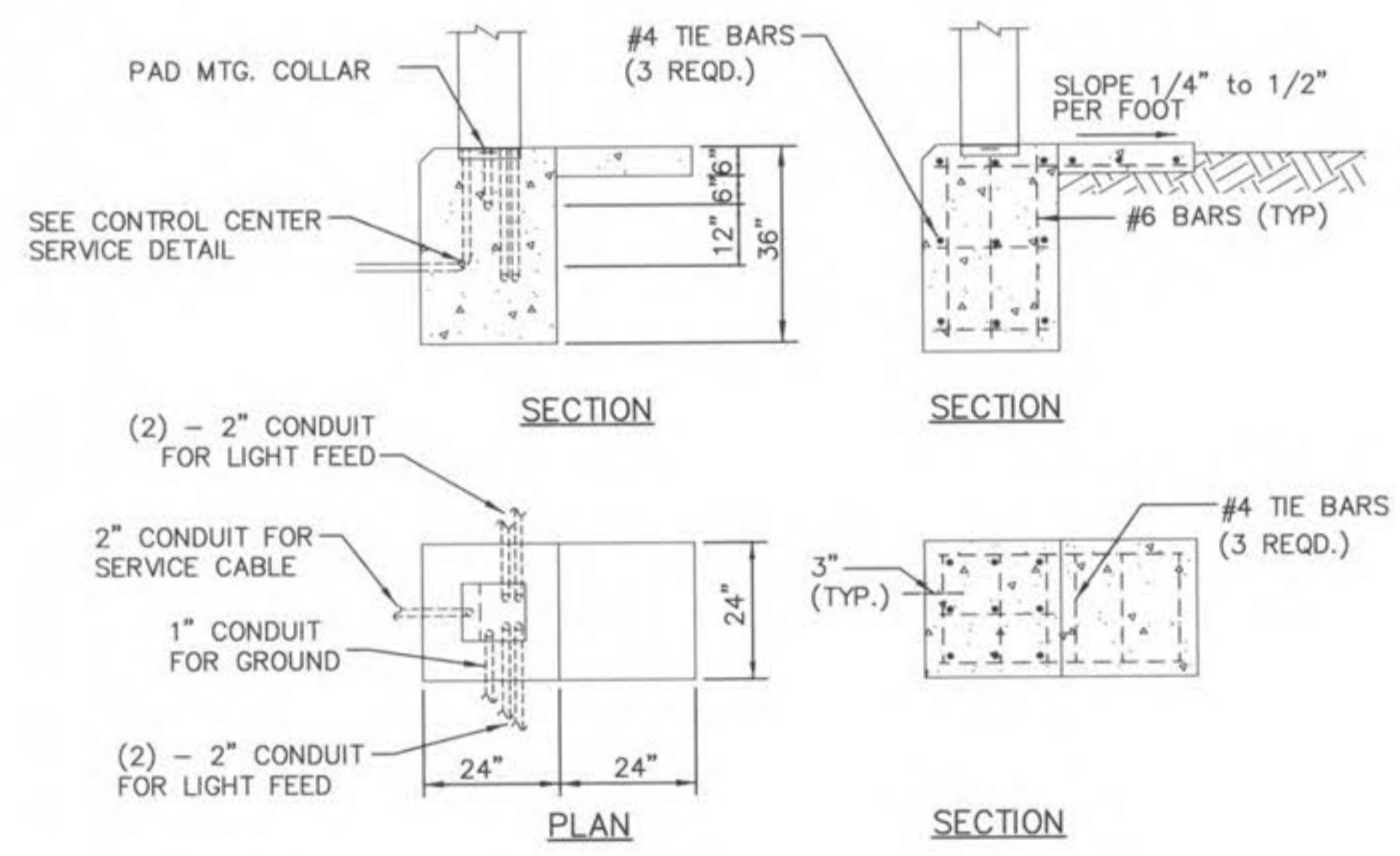
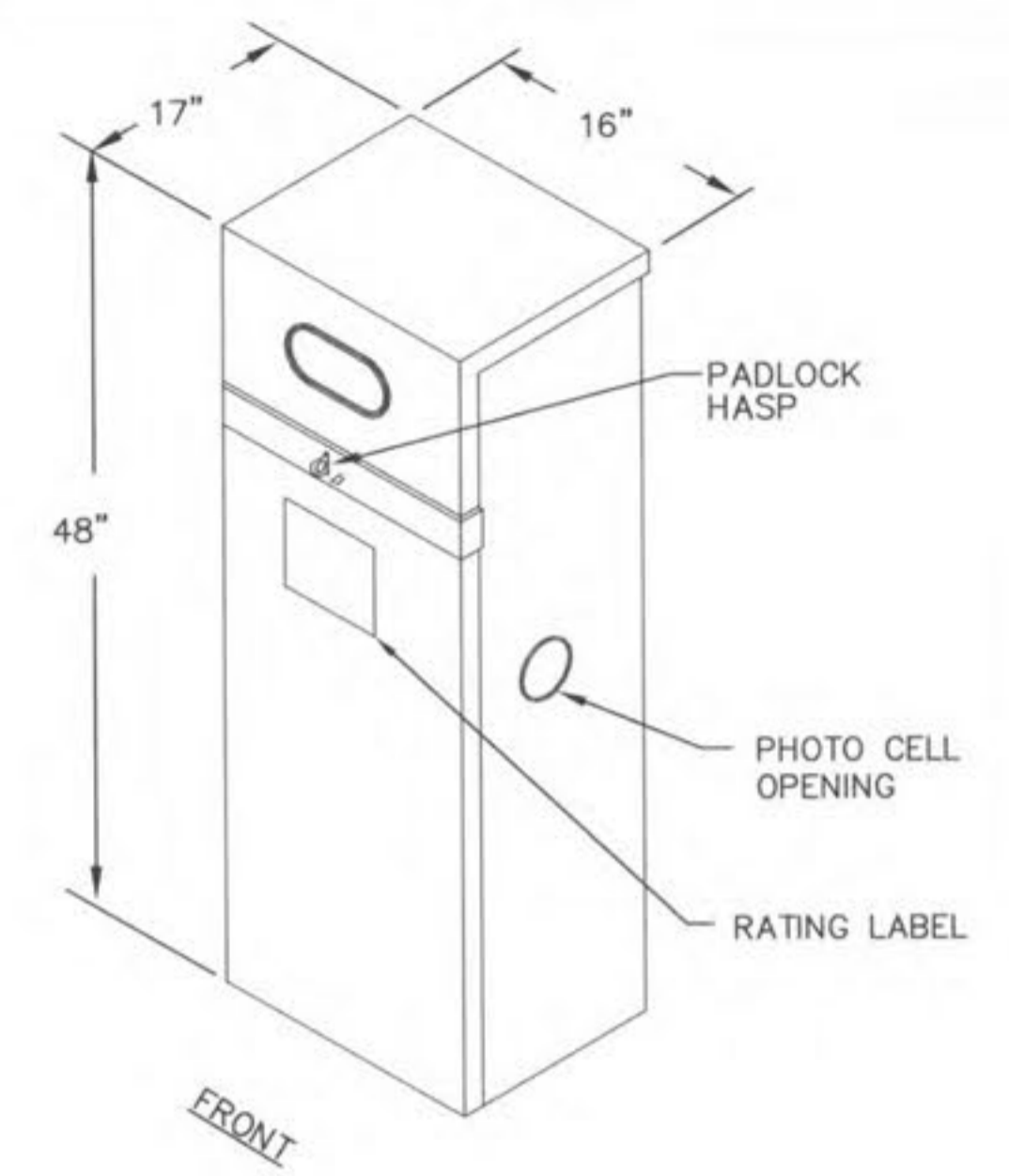


WIRING DIAGRAM

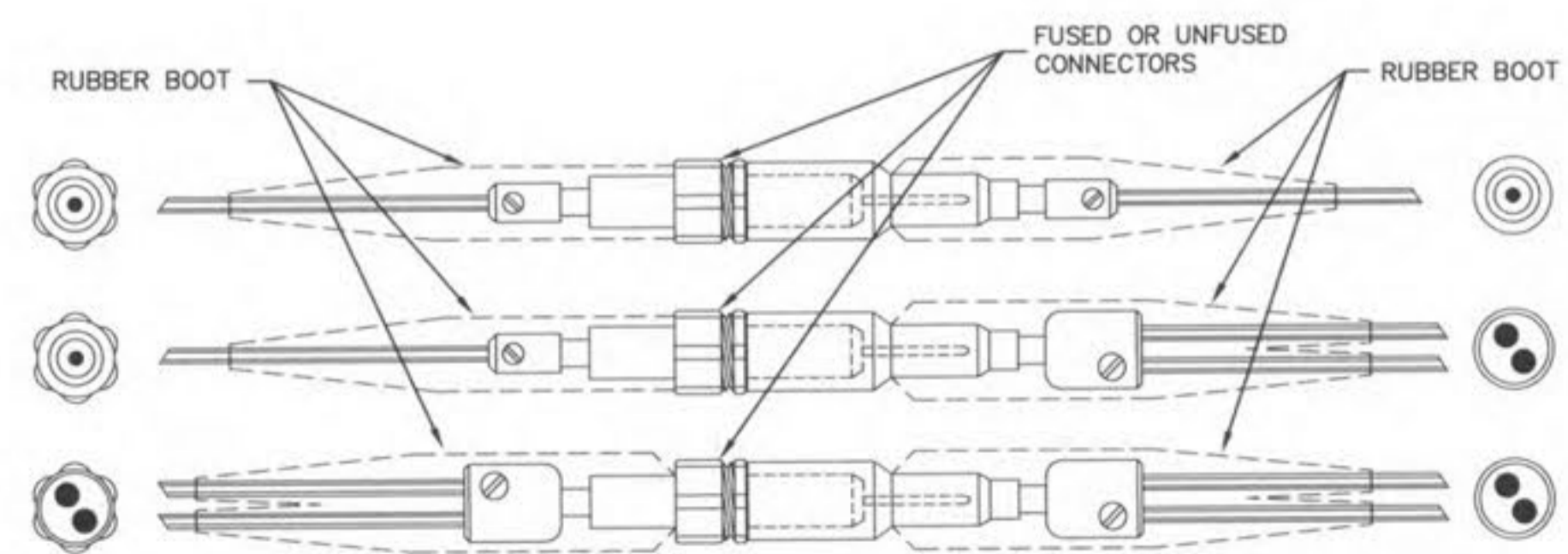
CIRCUIT DIRECTORY				
NO.	DESCRIPTION	QTY	AMP	POLE
1,2	MAIN	1	100	2
3,4	BRKR. 1	1	30	2
5,6	BRKR. 2	1	30	2
7,8	BRKR. 3	1	30	2
9,10	BRKR. 4	1	30	2
11	BRKR. 5	1	15	1
12	BRKR. 6	1	20	1
	RELAY 1	1	30	2
	RELAY 2	1	30	2
	RELAY 3	1	30	2
	RELAY 4	1	30	2



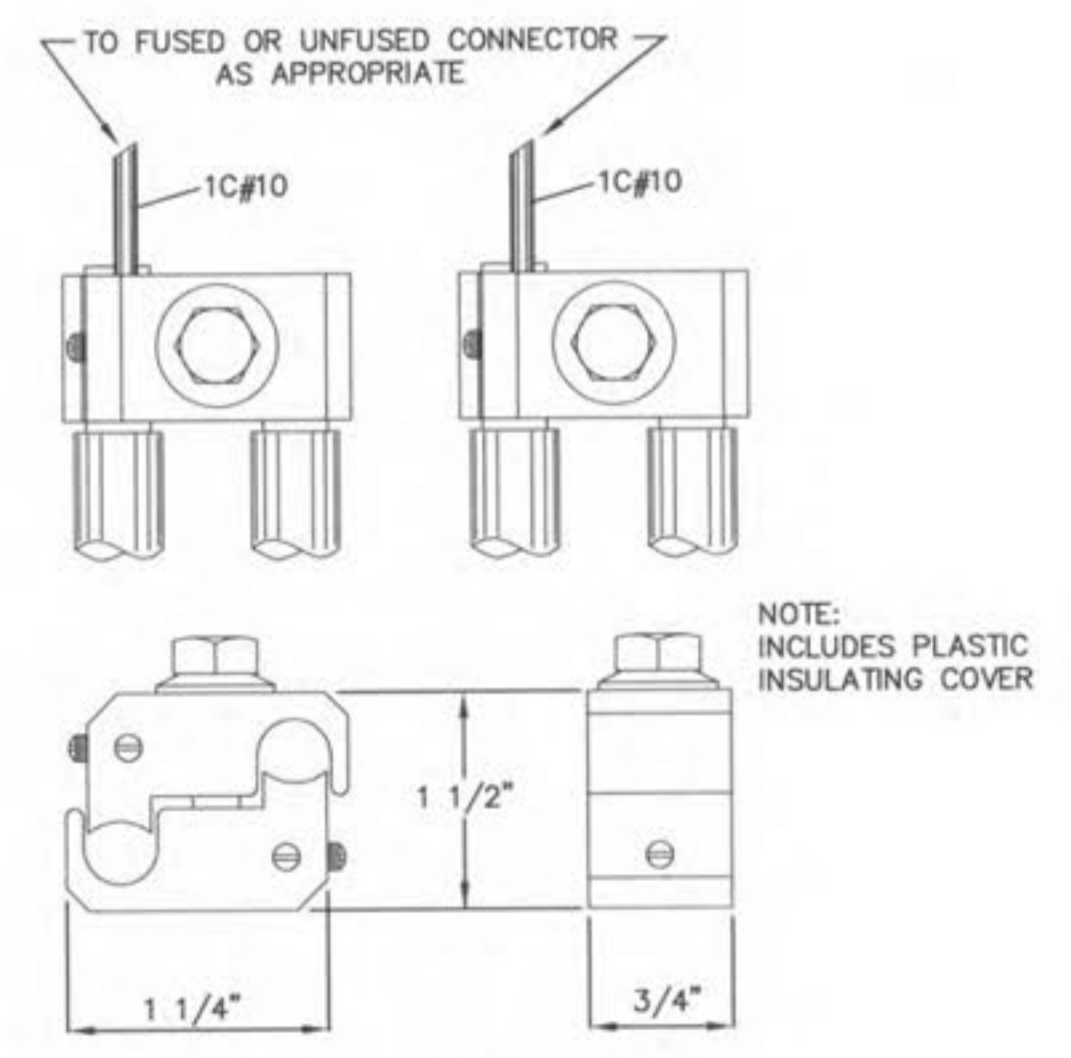
PAD MOUNTED CONTROL CENTER
 FOUR-CIRCUIT CONTROLLER



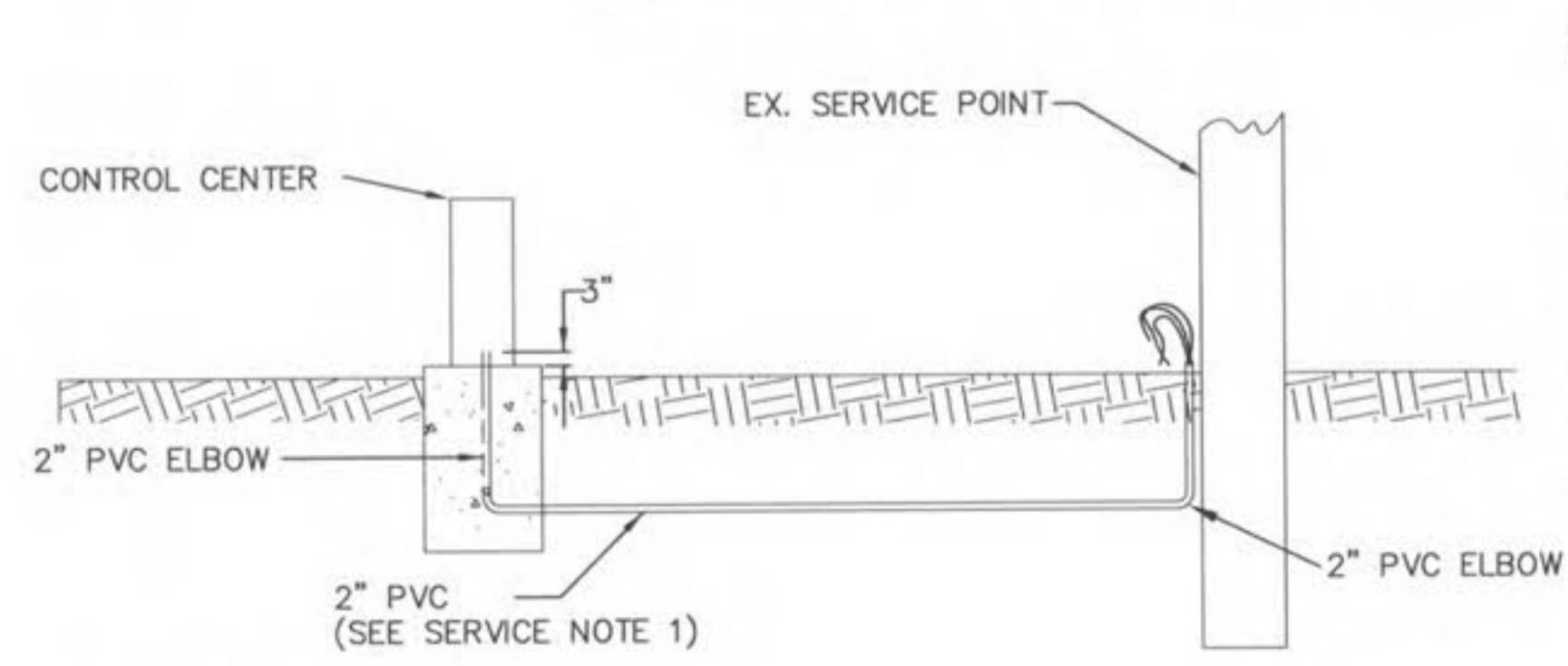
CONTROL CENTER CONCRETE FOUNDATION



FUSED OR UNFUSED CONNECTOR



FARGO CONNECTOR



CONTROL CENTER SERVICE

- CONTROL CENTER NOTES:
- 1) PROVIDE GROUND ROD(S) AS REQUIRED FOR MAXIMUM OF 25 OHMS RESISTANCE TO GROUND.
 - 2) CONCRETE SLAB TO PROVIDE SEMI-DRY WORKING AREA IN FRONT OF CONTROLLER CABINET.

SERVICE NOTES:
 1.) 2" PVC CONDUIT WITH 3-1C#4 AWG POWER CABLE SHALL BE FURNISHED AND INSTALLED BY THE CONTRACTOR FROM THE PROPOSED LIGHTING CONTROL CENTER TO THE SECONDARY SERVICE POINT. A MINIMUM OF 35 FEET ADDITIONAL CABLE SHALL BE PROVIDED AND COILED AT THE BASE OF THE UTILITY POLE FOR HOOK-UP BY AMEREN UE.

