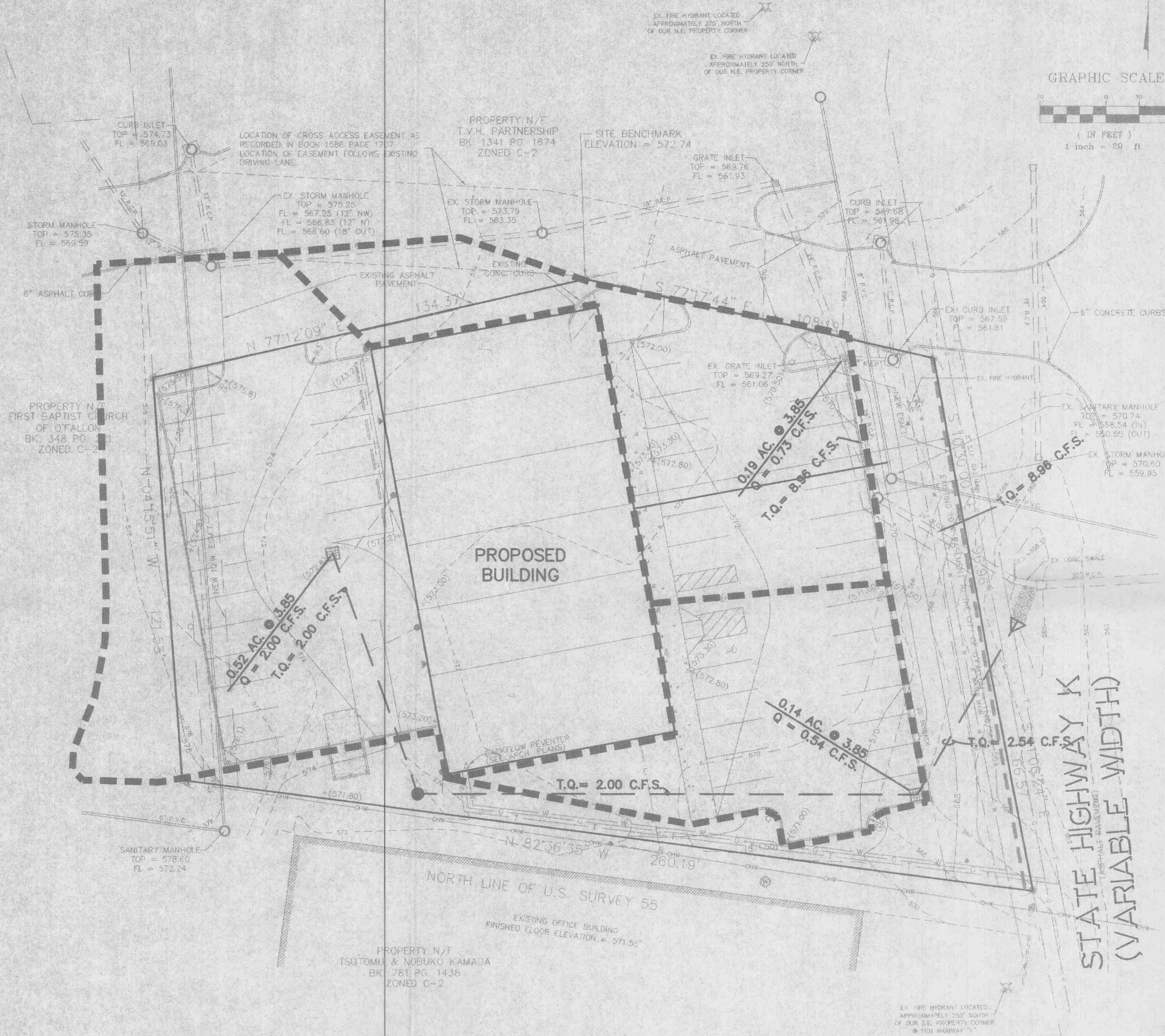


A DRAINAGE AREA MAP FOR  
**HIGHWAY "K" PLAZA**  
 A TRACT OF LAND BEING PART OF THE SOUTHEAST QUARTER  
 OF FRACTIONAL SECTION 29, TOWNSHIP 47 NORTH, RANGE 3 EAST,  
 ST. CHARLES COUNTY, MISSOURI



THIS SHEET FOR DRAINAGE AREA PURPOSES ONLY. NOT FOR CONSTRUCTION

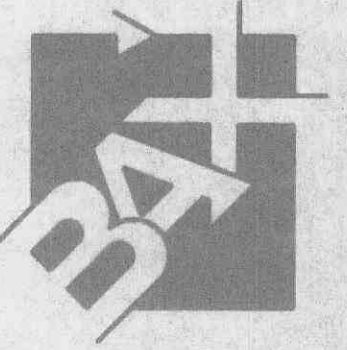
CISSELL MUELLER CONSTRUCTION  
 828 SOUTH FIFTH STREET  
 ST. CHARLES, MO 63301

PREPARED FOR:

DECLARATION OF RESPONSIBILITY  
 I hereby certify that the documents intended to be issued under my seal are limited to the work and services described and my responsibility for all other drawings, specifications, estimates, figures or other documents or instruments relating to a project to be used for any part or parts of the architectural or engineering project or survey.

Copyright 1984  
 S.M. Engineering Company, Inc.  
 All Rights Reserved

REVISIONS	
1/8/96	REVISIONS
1/29/96	REVISIONS
2/20/98	REVISIONS



ENGINEERING  
 PLANNING  
 SURVEYING

1052 South Cloverleaf Drive  
 St. Peters, MO. 63376-6445  
 914-928-5552  
 FAX 928-1718

12-21-95  
 DATE  
 95-7724  
 PROJECT NUMBER  
 2 of 2  
 SHEET OF  
 7724 DWG  
 FILE NAME  
 ERB  
 DRAWN CHECKED

LEGEND OF SYMBOLS	
☐	TELEPHONE BOX
⊕	FIRE HYDRANT
▲	WATER METER
⊕	WATER SHUT OFF
⊕	UTILITY POLE
•	GUY WIRE ANCHOR
⊕	SEWER CLEAN OUT
—	STORM SEWER
—	SANITARY SEWER
—	GAS LINE
—	WATER LINE
—	OVERHEAD WIRES

