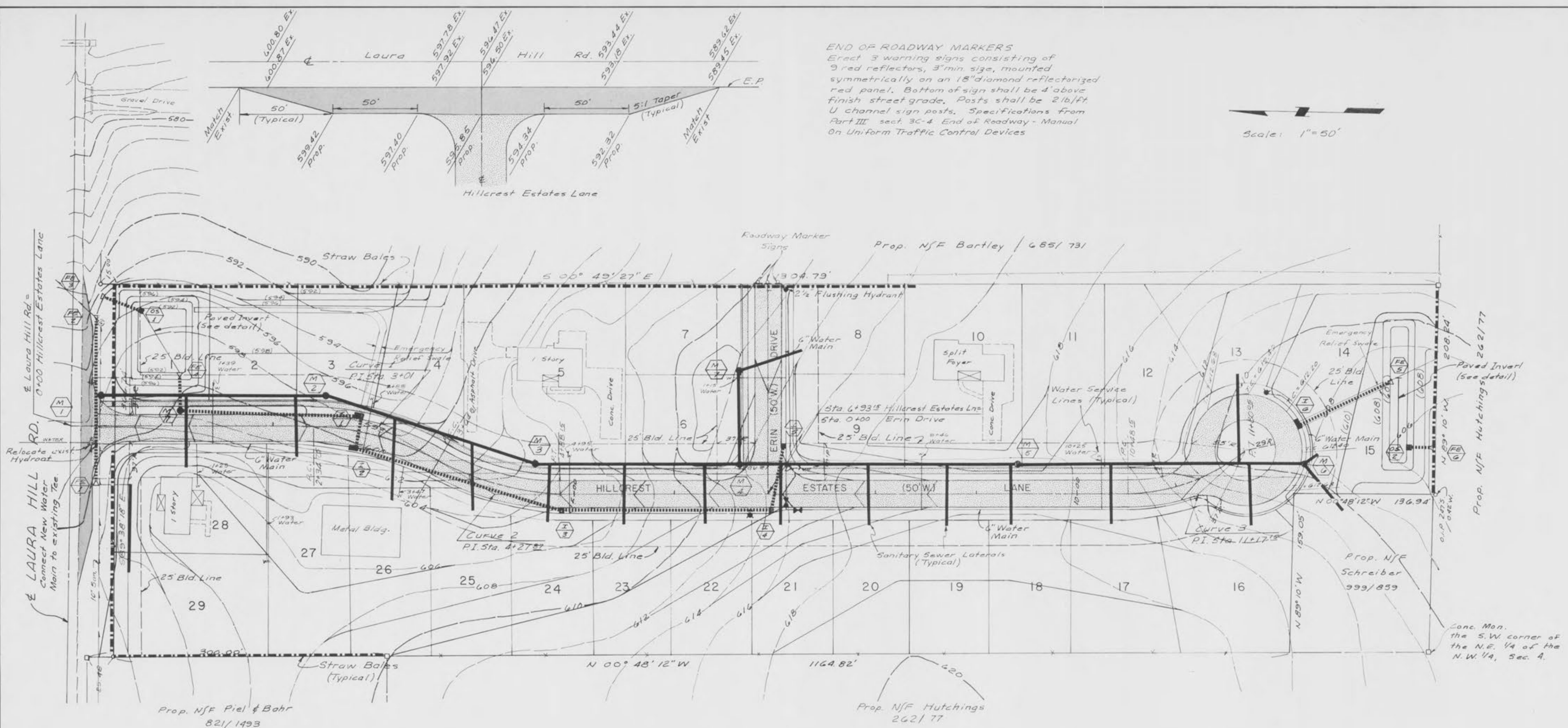
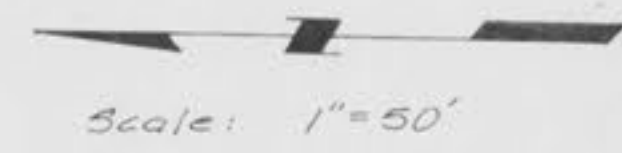


END OF ROADWAY MARKERS
 Erect 3 warning signs consisting of 9 red reflectors, 3" min. size, mounted symmetrically on an 18" diamond reflectorized red panel. Bottom of sign shall be 4' above finish street grade. Posts shall be 2 1/2" U channel sign posts. Specifications from Part III sect. 3C-4 End of Roadway - Manual On Uniform Traffic Control Devices



CURVE DATA

1. $\Delta = 28^\circ 14' 51''$ $R = 263.29'$ $T = 66.25'$ $L = 129.81'$
2. $\Delta = 29^\circ 24' 45''$ $R = 240.26'$ $T = 63.06'$ $L = 123.34'$
3. $\Delta = 41^\circ 33' 28''$ $R = 181.85'$ $T = 69.00'$ $L = 131.90'$

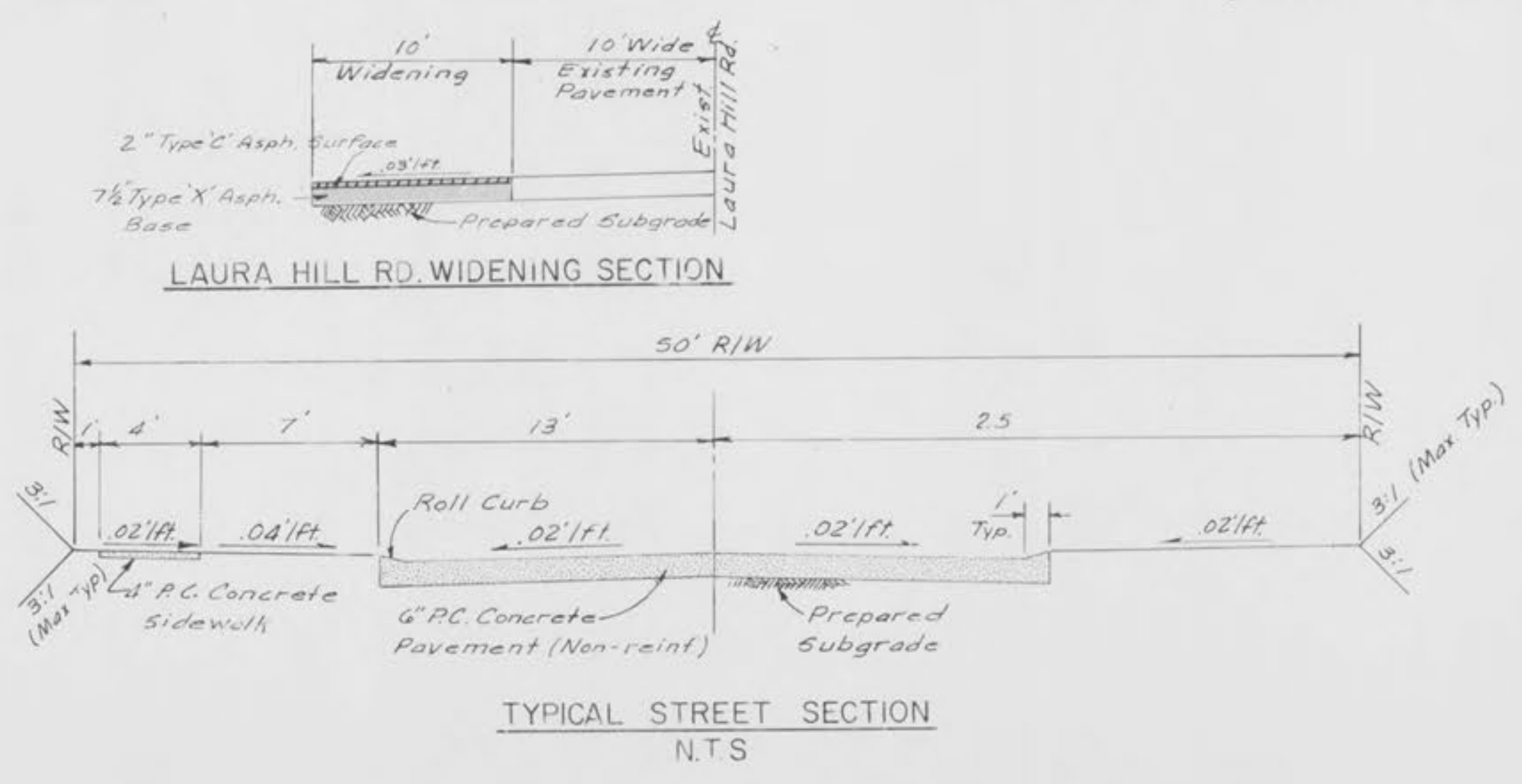
LEGEND

EXISTING	DESCRIPTION	PROPOSED
--- 608 ---	CONTOUR	(608)
-----	STORM SEWER	-----
-----	INLET	-----
-----	SANITARY SEWER	-----
○	MANHOLE	○
-----	CONCRETE	-----
-----	ASPHALT	-----
-----	TO BE REMOVED	(T.B.R.)
-----	NOT TO SCALE	N.T.S.
+	POWER POLES	+
⊕	FIRE HYDRANT	⊕
⊕	WATER VALVE	⊕
⊕	WATER MAIN	⊕
-----	FLARED END SEC.	-----
△	SINGLE CURB INL.	△
□	DOUBLE CURB INL.	□

Note: Length and location of Sanitary Sewer Laterals and Water Services shown on plans are approximate. Water Service stations are from roadway E.

SUMMARY OF EARTHWORK
 Excavation 9,900 C.Y.
 Fill 9,900 C.Y.
 Balanced Earthwork
 Note: Fill Volumes have been Adjusted for shrinkage

B.M. R.R. Spike in power pole at intersection of Laura Hill Road & Laura Hill Drive U.S.G.S. Elev. 591.77



HILLCREST ESTATES
 DEVELOPER: HILLCREST ENTERPRISES

GRADING PLAN

ALLAN E. HEMMINGHAUS, P.E.
 ENGINEERING SERVICES
 P.O. Box 1208 St. Louis, Missouri 63031
 (314) 831-2570

Design _____ Sheet No. _____
 Drawn _____
 Checked _____
 Scale 1" = 50'
 Date 1/1/80 of 4 Sheets

2

Revised 1/1/80
 Revised 1/1/80