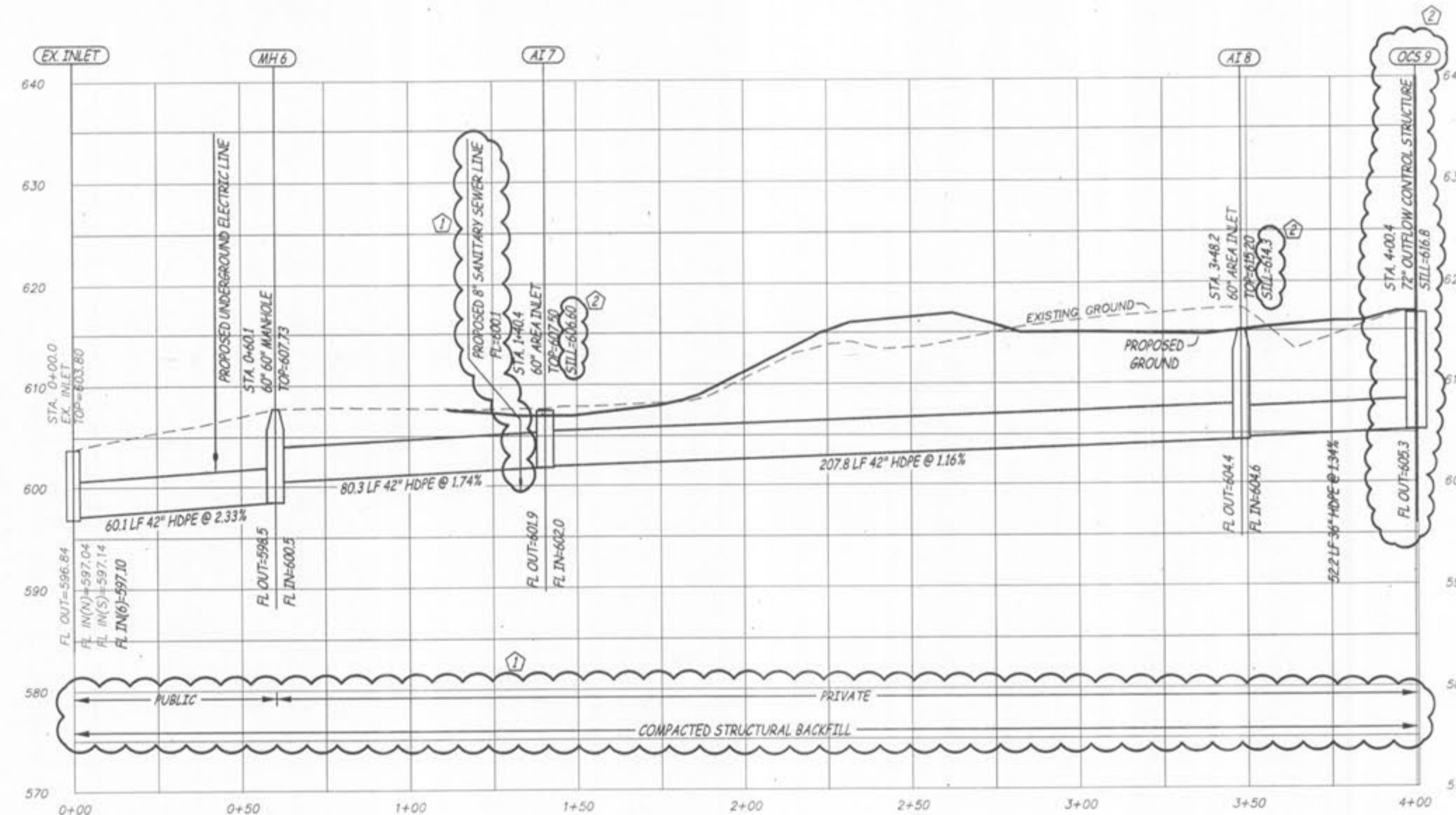




EX SOL THRU GI4
SCALE - HORIZ. 1" = 30'
VERT. 1" = 10'



MH 10 THRU OCS 9
SCALE - HORIZ. 1" = 30'
VERT. 1" = 10'

F:\COURREV\2010\AMVICOS\LES1\514491\SITE PLAN.DWG 8/23/2010

PLANNING & DEVELOPMENT #1709.03 APPROVED JANUARY 7, 2010

| | | | | |
|---|--|---|--|--|
|  | | HILLMANN PLACE ST. CHARLES COUNTY, O'FALLON, MISSOURI | | |
| | | Surveyed: JP Drawn: BR Checked: MK |  Engineering Surveys & Services 1113 Fay Street Columbia, Missouri 573 - 449 - 2646 <small>Missouri Engineering Corporation # 2004055013</small> | Revised ① JULY 20, 2010 ② AUG 24, 2010 |
| MATTHEW A. KRLETE PROFESSIONAL ENGINEER PE-200702811 | | Date JUNE 4, 2010 | Job 11481 | Sheet C110 |