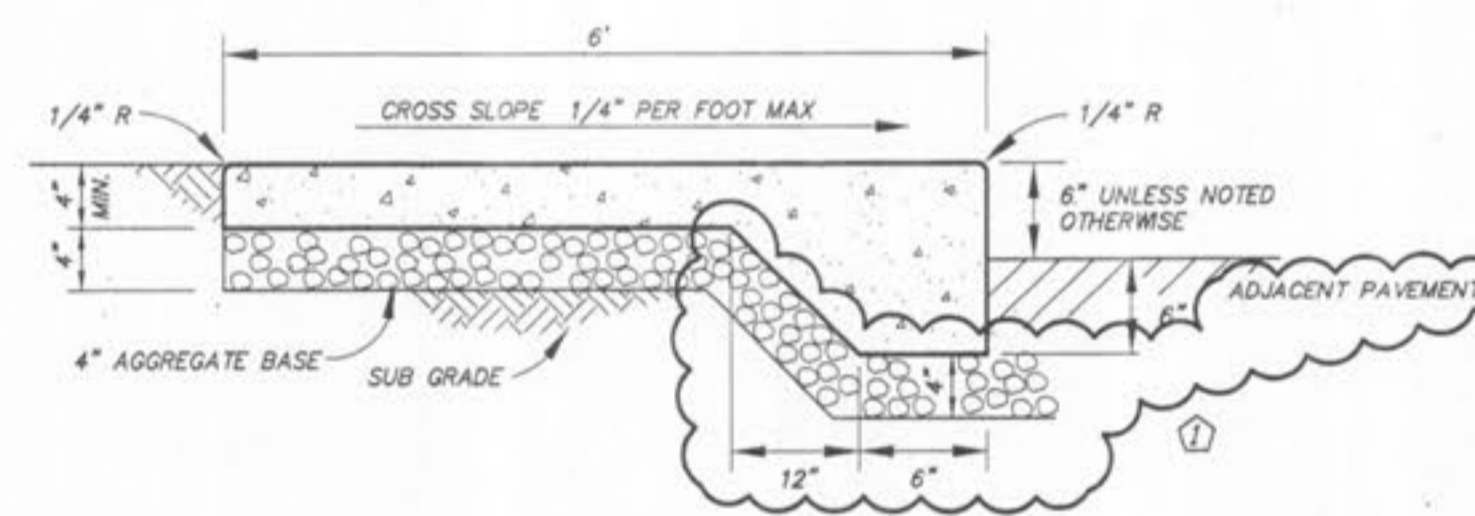


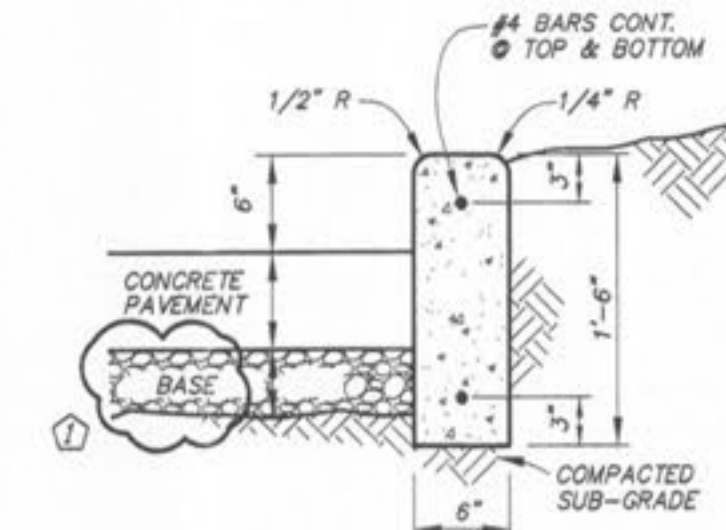
- NOTES:**
1. SIDEWALK SHALL BE 4" THICK 4000 PSI @ 28 DAYS CONCRETE.
  2. INSTALL 1/2" TRANSVERSE EXPANSION JOINTS TO MATCH STREET OR CURB AND GUTTER EXPANSION JOINTS AND AT ALL DRIVEWAY APPROACHES, AND SIDEWALK RAMPS.
  3. INSTALL TRANSVERSE SAW JOINTS AT SPACING = SIDEWALK WIDTH.
  4. SIDEWALK WIDTH IS MEASURED FROM BACK OF CURB.

**CONCRETE SIDEWALK AT BACK OF 6" CONCRETE CURB (ALTERNATE)**  
SCALE: 1" = 1'-0"

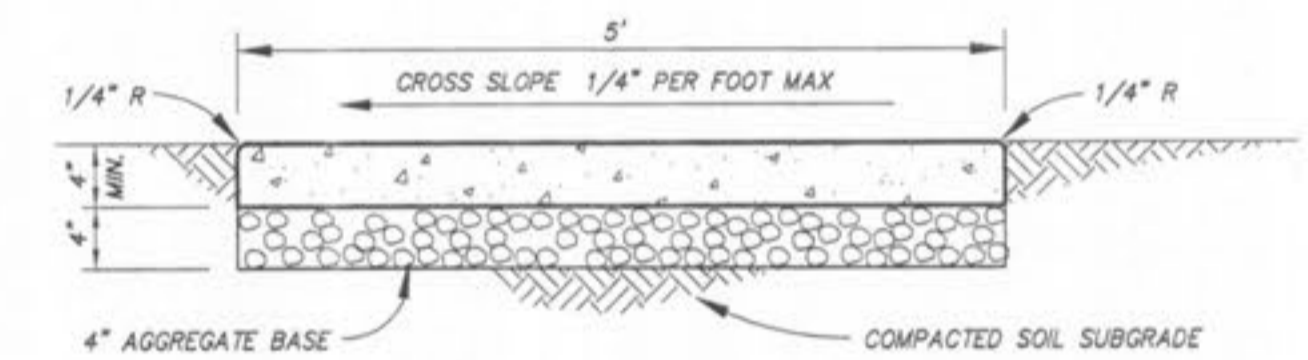


- NOTES:**
1. SIDEWALK SHALL BE 4" THICK 4,000 PSI @ 28 DAYS CONCRETE.
  2. PROVIDE CONTROL JOINTS AT INTERVALS EQUAL TO CONCRETE SIDEWALK WIDTH, BUT IN NO CASE GREATER THAN 10'.
  3. CONTROL JOINTS MAY BE MADE WITH A GROOVING TOOL AT TIME OF FINISHING OR WITH A CONCRETE SAW AFTER CONCRETE HAS SUFFICIENTLY CURED.
  4. CONTROL JOINTS SHALL BE 1" DEEP AND 1/4" WIDE.
  5. PROVIDE EXPANSION JOINTS AT MAXIMUM OF 32' INTERVALS AND AT EXISTING STRUCTURES OR CONCRETE.

**THICKENED CONCRETE SIDEWALK**  
NOT TO SCALE

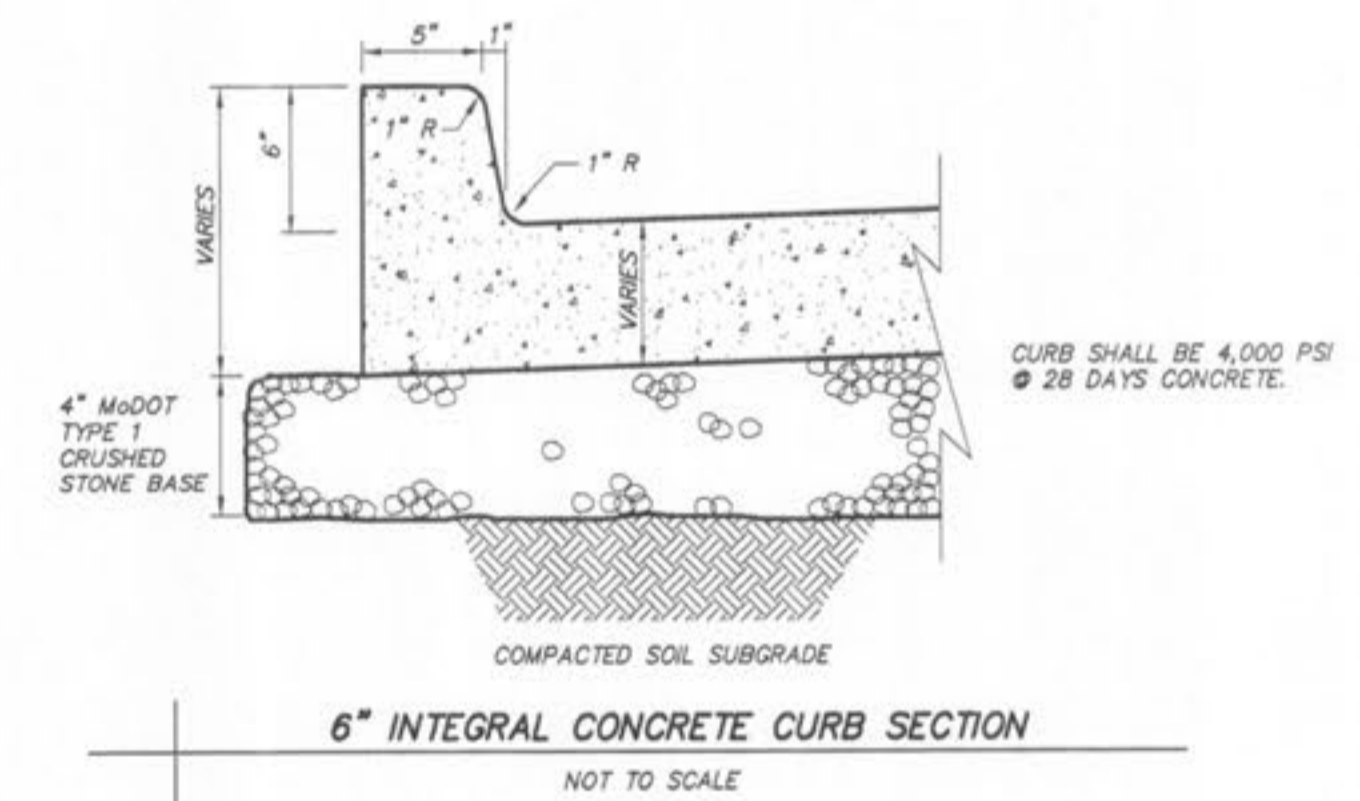


- NOTES:**
1. PAVEMENT SHALL BE 4,000 PSI @ 28 DAYS CONCRETE.
  2. PROVIDE 1" DEEP x 1/4" WIDE CONTROL JOINTS AT MAXIMUM 10' SPACING.
  3. PROVIDE 1/2" EXPANSION JOINTS AT MAXIMUM 60' INTERVALS AND AT EXISTING CONCRETE USING #4 DOWELS x 12" LGT. - TOP AND BOTTOM - PREVENT BONDAGE TO CONCRETE AT ONE END.



- NOTES:**
1. SIDEWALK SHALL BE 4" THICK 4,000 PSI @ 28 DAYS CONCRETE.
  2. PROVIDE CONTROL JOINTS AT INTERVALS EQUAL TO CONCRETE SIDEWALK WIDTH, BUT IN NO CASE GREATER THAN 10'.
  3. CONTROL JOINTS MAY BE MADE WITH A GROOVING TOOL AT TIME OF FINISHING OR WITH A CONCRETE SAW AFTER CONCRETE HAS SUFFICIENTLY CURED.
  4. CONTROL JOINTS SHALL BE 1" DEEP AND 1/4" WIDE.
  5. PROVIDE EXPANSION JOINTS AT MAXIMUM OF 20' INTERVALS, OR EVERY FOURTH CONTROL JOINT, AND AT EXISTING STRUCTURES OR CONCRETE.

**CONCRETE SIDEWALK**  
SCALE: 1" = 1'-0"



PLANNING & DEVELOPMENT #1709.03 APPROVED JANUARY 7, 2010

SITE DETAILS		HILLMANN PLACE		ST. CHARLES COUNTY, O'FALLON, MISSOURI	
Surveyed: -	Drawn: BR	Checked: MK	Scale: AS SHOWN	Date: JUNE 4, 2010	Job: 11481
			<b>Engineering Surveys &amp; Services</b> 1113 Fay Street Columbia, Missouri 573 - 449 - 2646 <small>Missouri Engineering Corporation # 2004005018</small>		
MATTHEW A. KRIETE PROFESSIONAL ENGINEER PE-2007002811			Revised: JULY 20, 2010 Sheet: C117		