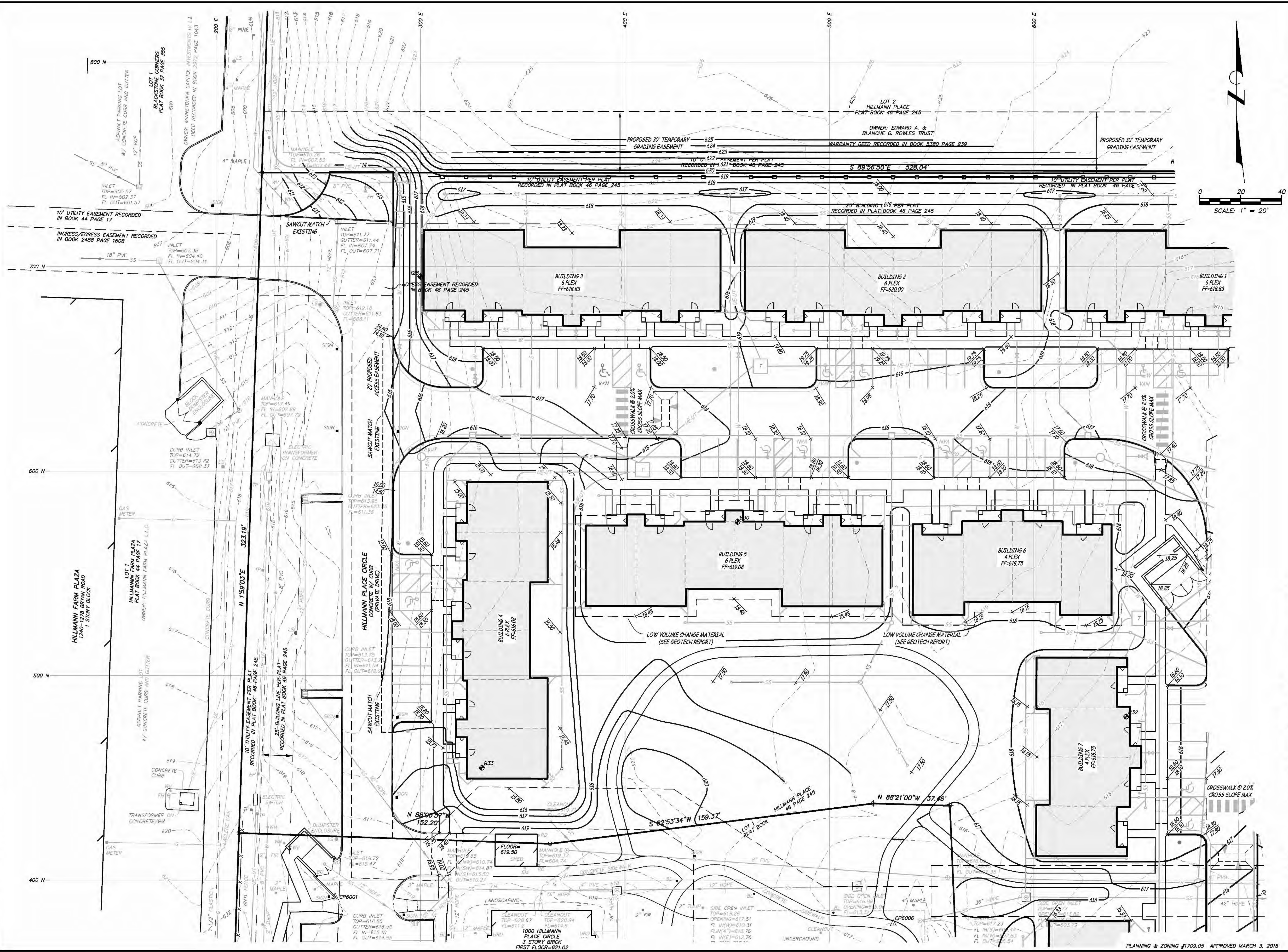
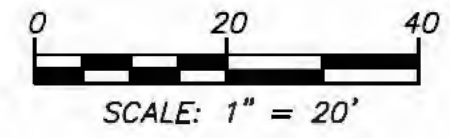




Engineering Surveys and Services
 Consulting Engineers, Scientists, and Land Surveyors
 Analytical and Material Laboratories
 1113 E. Street, Columbia, Missouri 65201
 571-449-2646 | www.es-sinc.com
 Other Offices:
 Jefferson City, Missouri - Sedalia, Missouri
 Missouri Engineering Corporation # 200400018



HILLMANN PLACE - PHASE II
 OF FALLON, ST. CHARLES COUNTY, MISSOURI



MATTHEW A. KRIETE
 PROFESSIONAL ENGINEER
 PE-200700281

This document was intended to be digitally signed. If signature and validation are not present this media should not be considered a certified document.

Date	MARCH 25, 2016
Revised	
②	MAY 12, 2016
③	JULY 26, 2016

Design: RMJ Drawn: MJS

GRADING PLAN

Sheet
C3.01

ES&S PROJECT NO. 13189

PLANNING & ZONING #1709.05 APPROVED MARCH 3, 2016