



**Engineering Surveys and Services**  
 Consulting Engineers, Scientists and Land Surveyors  
 Analytical and Material Laboratories  
 1113 Poplar Street, Columbia, Missouri 65201  
 573-449-2646 | www.es-sr.com

Other Offices:  
 Jefferson City, Missouri • Sedalia, Missouri  
 Missouri Engineering Corporation # 204005018

**HILLMANN PLACE - PHASE II**  
 OF FALLON, ST. CHARLES COUNTY, MISSOURI



MATTHEW A. KRIETE  
 PROFESSIONAL ENGINEER  
 PE-2007002811

THIS DOCUMENT WAS INTENDED TO BE DIGITALLY SIGNED. IF SIGNATURE AND VALIDATION ARE NOT PRESENT THIS MEDIA SHOULD NOT BE CONSIDERED A CERTIFIED DOCUMENT.

Date  
**MARCH 25, 2016**

Revised  
 MAY 12, 2016  
 JULY 26, 2016

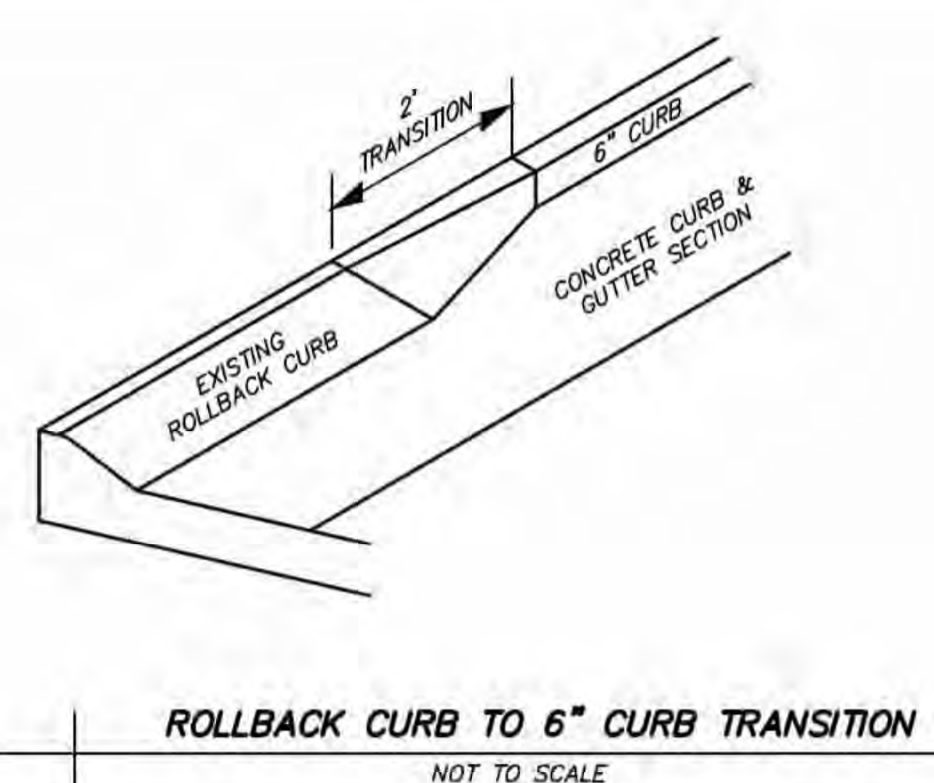
Design: RMJ Drawn: MJS

**SITE DETAILS**

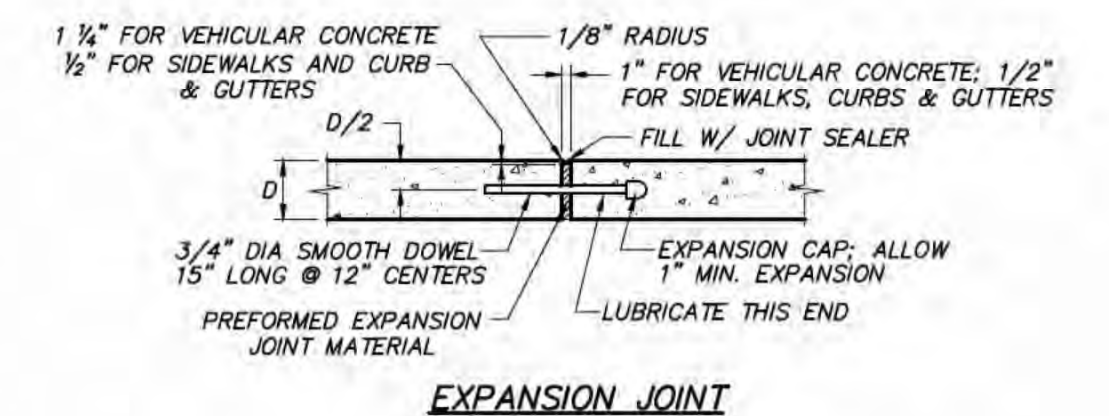
Sheet

**C9.01**

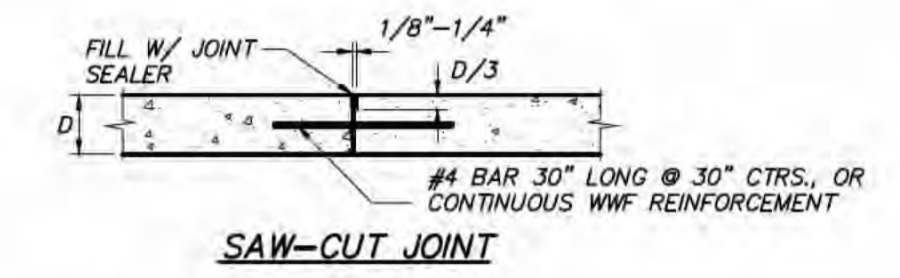
ES&S PROJECT NO. 13189



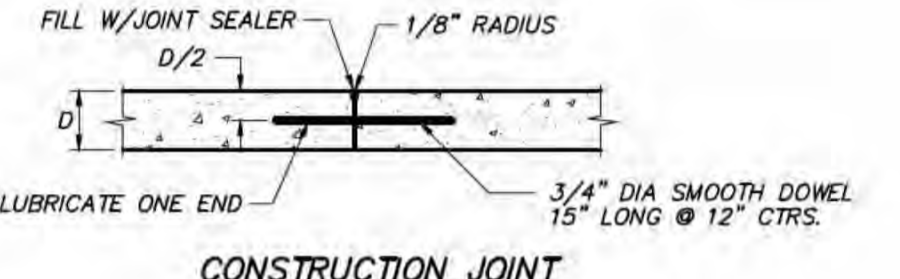
**ROLLBACK CURB TO 6" CURB TRANSITION**  
 NOT TO SCALE



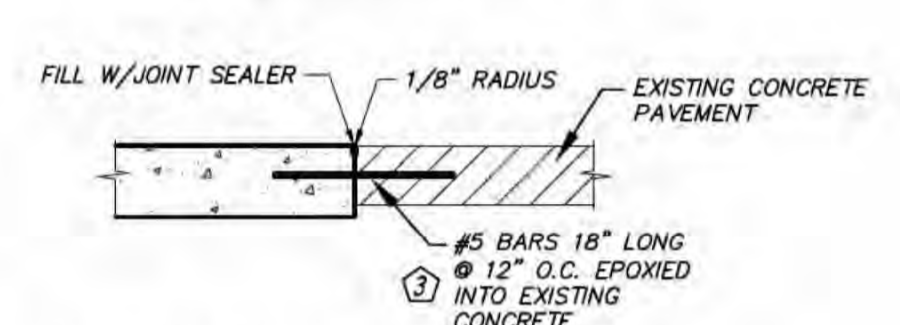
**EXPANSION JOINT**



**SAW-CUT JOINT**



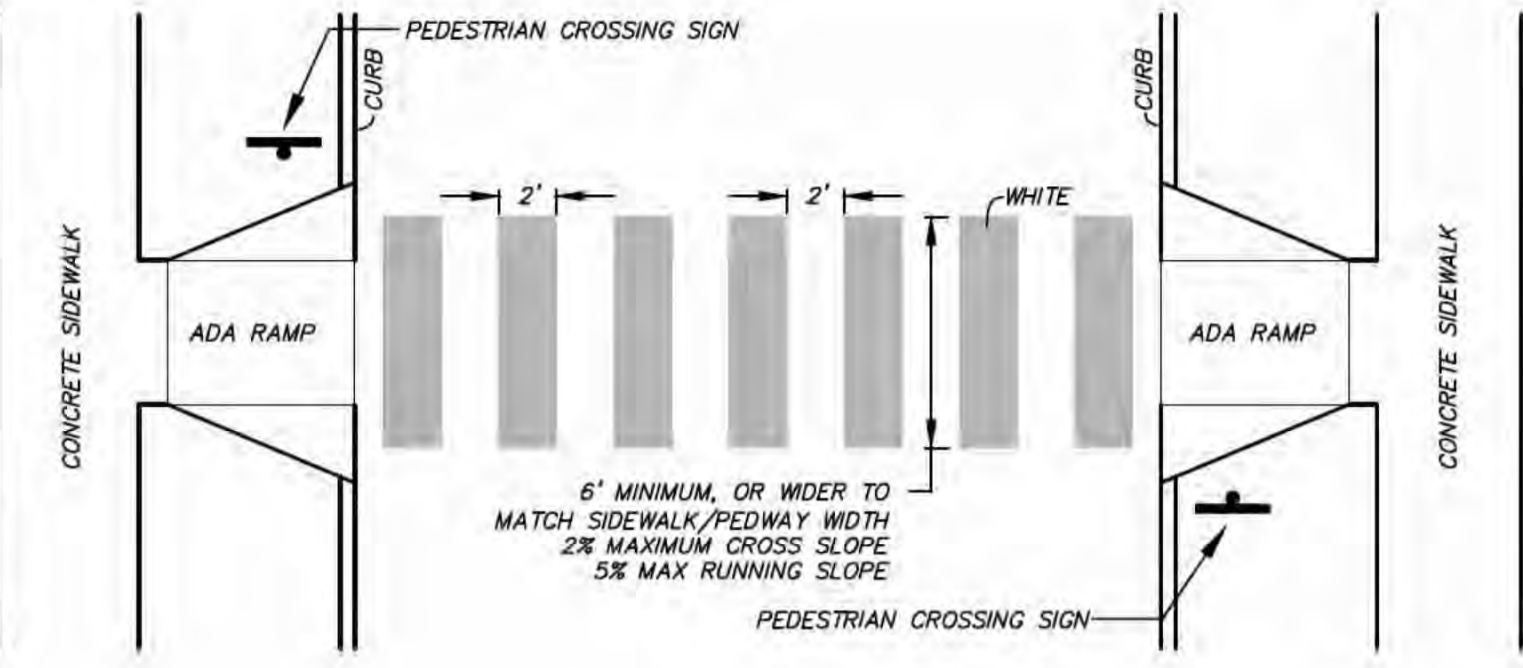
**CONSTRUCTION JOINT**



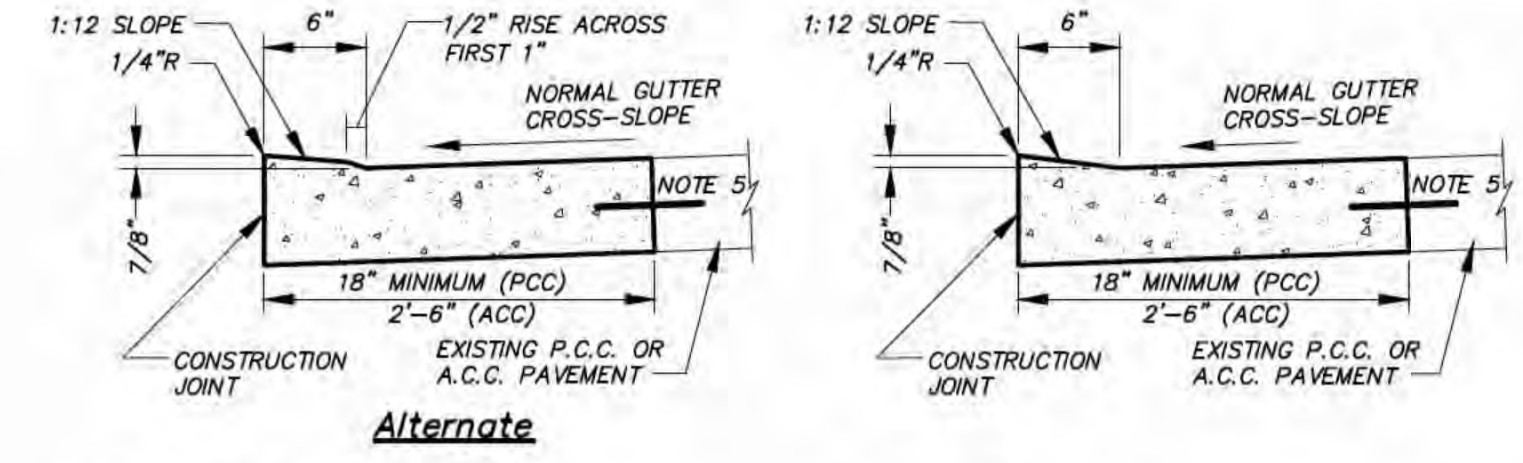
**EXISTING CONCRETE PAVEMENT JOINT**

- NOTES:**
- PRIOR TO CONSTRUCTION, CONTRACTOR SHALL SUBMIT A PAVEMENT JOINT PLAN OF ALL CONCRETE PAVEMENT FOR APPROVAL.
  - CONCRETE PAVEMENT SHALL HAVE SAW-CUT OR CONSTRUCTION JOINTS EVERY 10 FEET FOR 4 INCH THICK PAVEMENT, 12 FEET FOR 5 INCH THICK PAVEMENT, AND 15 FEET FOR 6 INCH THICK PAVEMENT OR GREATER. PANELS SHALL BE CUT SUCH THAT PANELS ARE NEARLY SQUARE AND DO NOT EXCEED 1.4 LENGTH TO WIDTH RATIO. EXPANSION JOINTS SHALL BE PROVIDED AT ALL FIXED STRUCTURES, SUCH AS: LIGHT STANDARD FOUNDATIONS, SEWER STRUCTURES, BUILDINGS, WALLS, BOTTOM OF STAIRS, ROOF DRAINS, ETC., AND EVERY 150 FEET MAXIMUM. JOINT BARS SHALL BE PROVIDED AT TRANSVERSE JOINTS IN ALL HEAVY DUTY PAVEMENT DRIVE AISLES.
  - THIS DETAIL APPLIES TO ALL CONCRETE PAVEMENT FOR PARKING LOTS, DRIVE/ACCESS AISLES, CURBS & GUTTERS, AND SIDEWALKS.
  - INCLUDE BAR WITH TRANSVERSE SAW-CUT JOINTS FOR HEAVY DUTY PAVEMENT. OMIT BAR WITH SAW-CUT JOINTS FOR STANDARD DUTY PAVEMENT AND SIDEWALKS.
  - PROVIDE CONSTRUCTION JOINT AT END OF DAYS WORK OR IF CONCRETE PLACEMENT IS SUSPENDED FOR MORE THAN 30 MINUTES.
  - SAW-CUT JOINTS SHALL BE CUT WITHIN 12 HOURS OF INITIAL SET OF CONCRETE. RAVELED JOINTS WILL NOT BE ACCEPTED.
  - JOINT SEALANT IS REQUIRED FOR ALL JOINTS AND SHALL BE LIGHT GRAY IN COLOR.
  - OMIT DOWEL BARS FOR EXPANSION JOINTS AT BUILDINGS, LIGHT STANDARDS, AND ROOF DRAINS.

**CONCRETE PAVEMENT JOINTS**  
 NOT TO SCALE



**CROSSWALK DETAIL**  
 NOT TO SCALE



**Alternate**

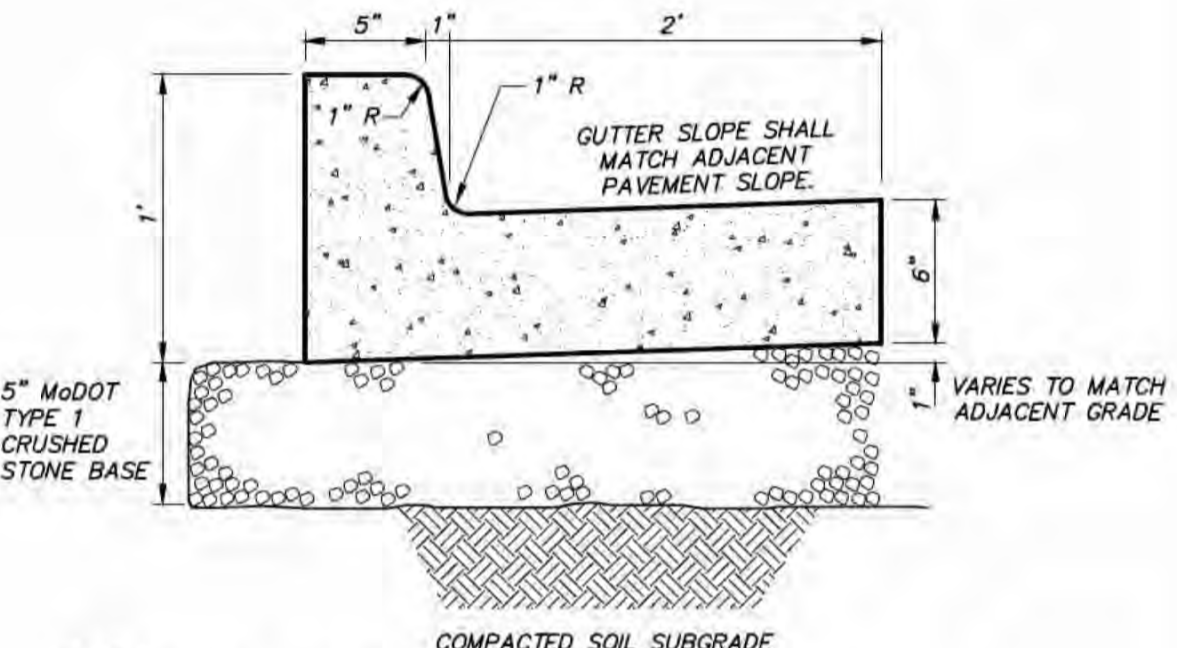
**PCC PAVEMENT NOTES:**

- CONCRETE SHALL MATCH ADJACENT CONCRETE.
- PAVEMENT THICKNESS SHALL MATCH EXISTING. BASE SHALL MATCH EXISTING.
- EXPANSION JOINTS AND CONTRACTION JOINTS SHALL BE PLACED AT LOCATIONS SIMILAR TO THE PAVEMENT WHICH WAS REMOVED.
- CURB EDGE SHALL BE TOOLED WITH 1/4" RADIUS.
- WHERE PAVEMENT IS EXISTING P.C.C., LOW CURB REPLACEMENT SHALL BE DOWELED INTO EXISTING USING 18" LONG #5 BARS AT 12" CTRS.
- CONCRETE SHALL BE 4000 PSI @ 28 DAYS.

**ACC PAVEMENT NOTES:**

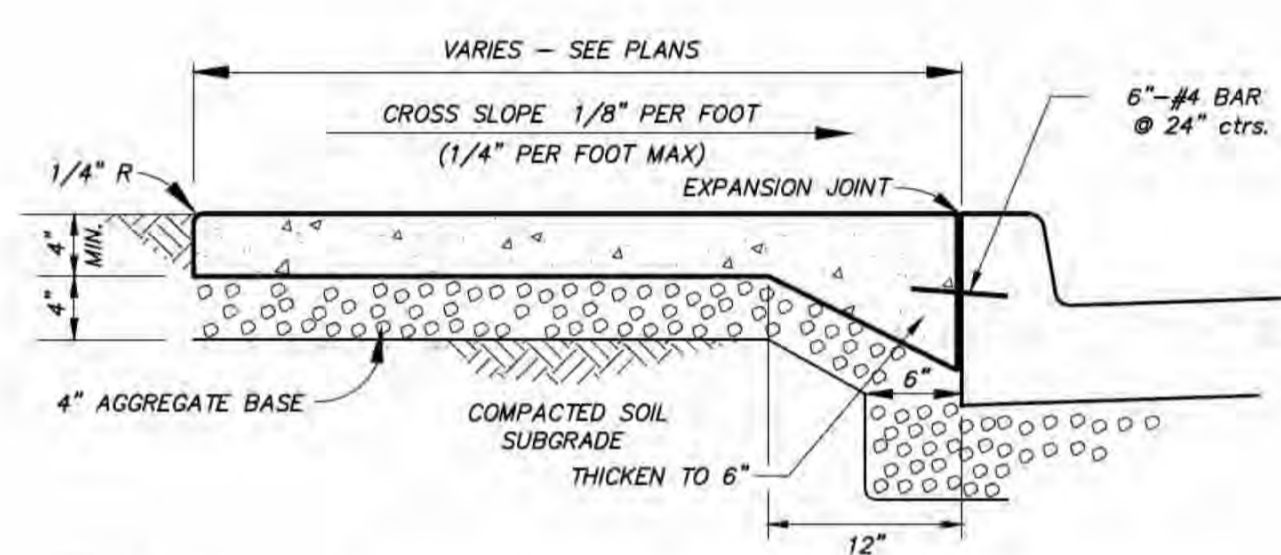
- CONCRETE SHALL MATCH SIDEWALK CONCRETE.
- GUTTER THICKNESS & BASE SHALL MATCH ADJACENT PAVEMENT.
- EXPANSION JOINTS AND CONTRACTION JOINTS SHALL BE PLACED AT LOCATIONS SIMILAR TO THE ADJACENT CURB AND GUTTER.
- CURB EDGE SHALL BE TOOLED WITH 1/4" RADIUS.
- WHERE PAVEMENT IS EXISTING P.C.C., LOW CURB REPLACEMENT SHALL BE DOWELED INTO EXISTING USING 18" LONG #5 BARS AT 12" CTRS.
- CONCRETE SHALL BE 4000 PSI @ 28 DAYS.

**SIDEWALK RAMP CURB**  
 NOT TO SCALE



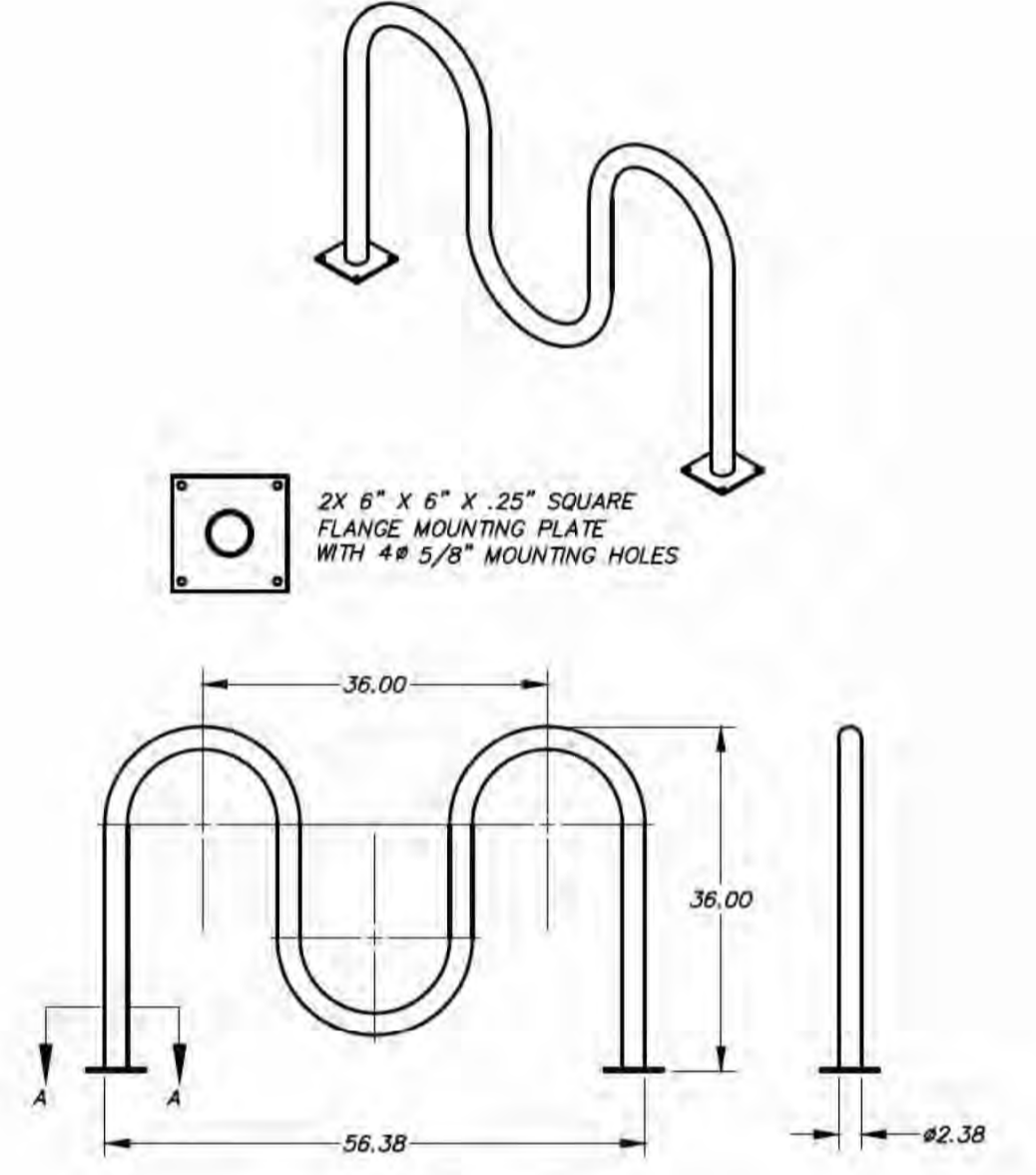
**6" CONCRETE CURB & GUTTER SECTION**  
 NOT TO SCALE

- NOTES:**
- CONCRETE SHALL BE 4000 PSI @ 28 DAYS.
  - CURB AND GUTTER MAY BE INTEGRAL IF CONCRETE PAVEMENT IS USED.
  - INSTALL TRANSVERSE EXPANSION JOINTS TO MATCH ADJACENT PAVEMENT, OR AT EVERY 150' MAX.
  - INSTALL SAW-CUT JOINTS TO MATCH ADJACENT PAVEMENT OR EVERY 10' MAX.
  - SAW-CUT JOINTS SHALL EXTEND THROUGH THE ENTIRE CURB SECTION FROM THE TOP OF CURB TO A DEPTH OF 2" BELOW THE GUTTER SURFACE.

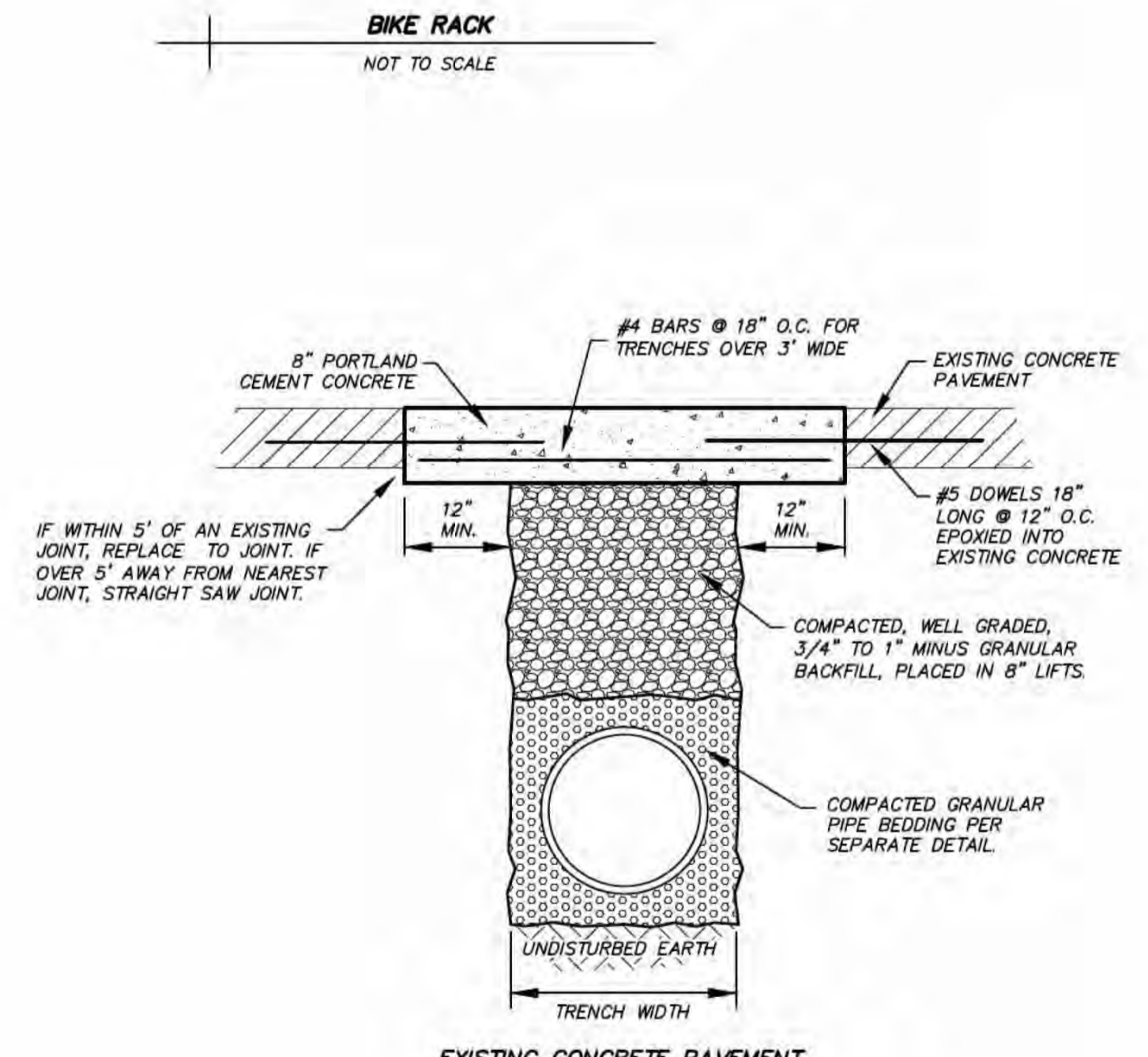


**CONCRETE SIDEWALK AT BACK OF CURB**  
 NOT TO SCALE

- NOTES:**
- SIDEWALK SHALL BE 4000 PSI @ 28 DAYS CONCRETE.
  - INSTALL TRANSVERSE EXPANSION JOINTS TO MATCH STREET OR CURB AND GUTTER EXPANSION JOINTS AND AT ALL DRIVEWAY APPROACHES, FIXED STRUCTURES, BUILDINGS, AND SIDEWALK RAMPS. SPACING SHALL NOT EXCEED 100'.
  - FOR SIDEWALKS UP TO 6 FT. WIDE, INSTALL TRANSVERSE SAW-CUT JOINTS AT SPACING EQUAL TO SIDEWALK WIDTH.
  - FOR SIDEWALKS WIDER THAN 6 FT., INSTALL LONGITUDINAL SAW JOINT AT CENTERLINE OR AT A SPACING NOT TO EXCEED 5 FT. TRANSVERSE SAW-CUT JOINT SPACING EQUAL TO HALF SIDEWALK WIDTH.
  - IF SIDEWALK IS REINFORCED, NO STEEL SHALL BE PLACED THROUGH AN EXPANSION JOINT.

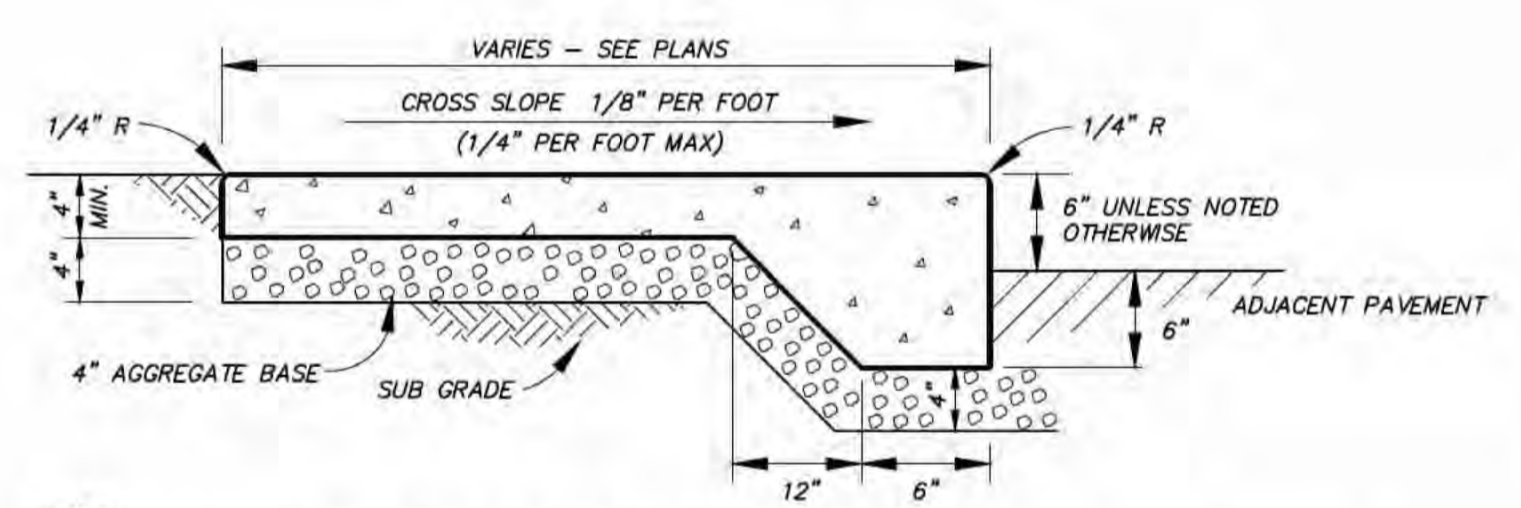


**BIKE RACK**  
 NOT TO SCALE



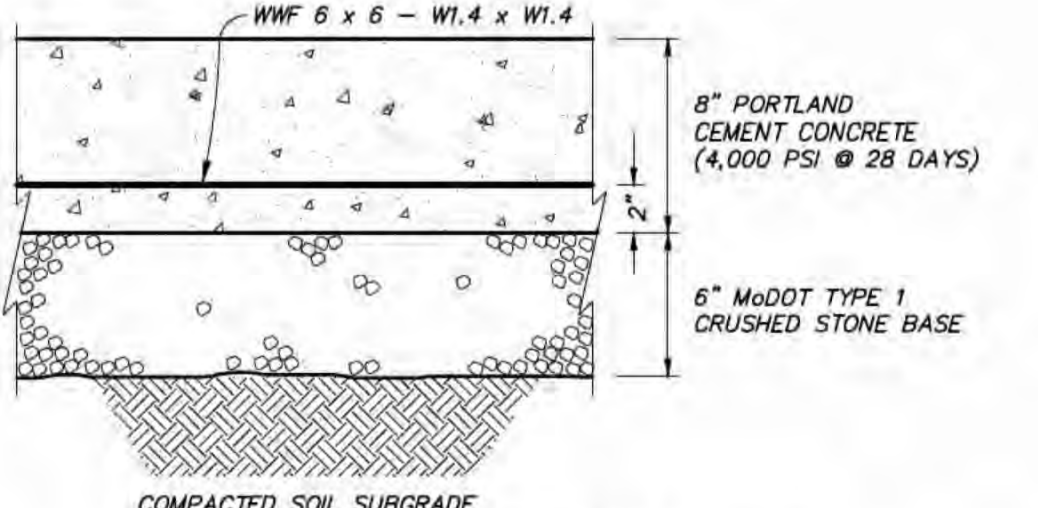
**TRENCH PATCHING WITHIN PAVED AREAS**  
 NOT TO SCALE

- NOTES:**
- CONCRETE SHALL BE 4,000 PSI WITH 6% AIR.
  - REINFORCEMENT SHALL BE GRADE 60.
  - A MINIMUM OF 5" OF CONCRETE, CURB AND GUTTER SHALL BE REPLACED. WHERE THE REPAIR WILL BE WITHIN 5" OF A JOINT, REPLACE CONCRETE CURB AND GUTTER TO THE JOINT. NO SECTION OF CONCRETE CURB AND GUTTER SHALL BE LESS THAN 5" LONG.
  - CLEAN GRANULAR MATERIAL IS NOT SUITABLE TRENCH BACKFILL.

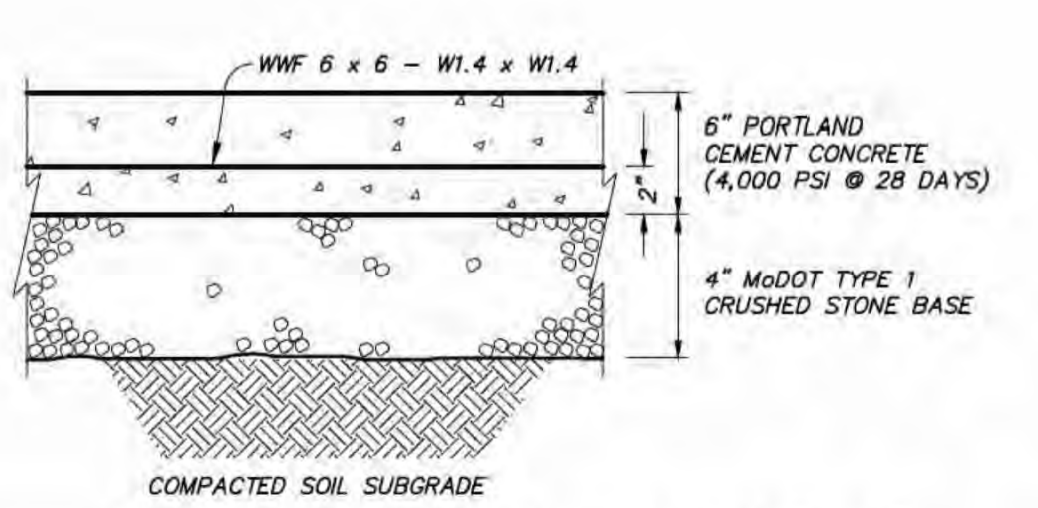


**THICKENED CONCRETE SIDEWALK**  
 NOT TO SCALE

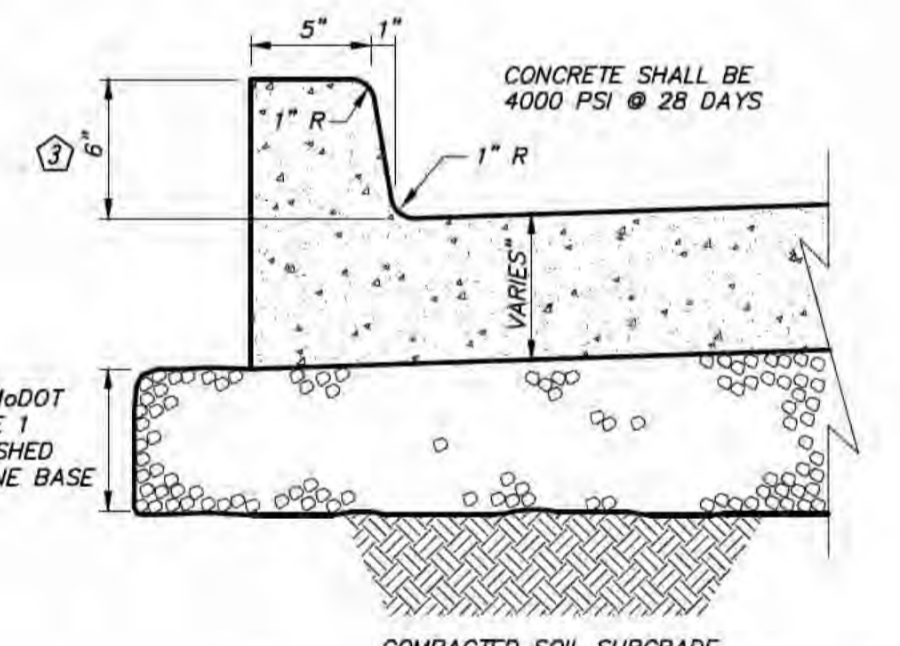
- NOTES:**
- SIDEWALK SHALL BE 4000 PSI @ 28 DAYS CONCRETE.
  - INSTALL TRANSVERSE EXPANSION JOINTS TO MATCH STREET OR CURB AND GUTTER EXPANSION JOINTS AND AT ALL DRIVEWAY APPROACHES, FIXED STRUCTURES, BUILDINGS, AND SIDEWALK RAMPS. SPACING SHALL NOT EXCEED 100'.
  - FOR SIDEWALKS UP TO 6 FT. WIDE, INSTALL TRANSVERSE SAW-CUT JOINTS AT SPACING EQUAL TO SIDEWALK WIDTH.
  - FOR SIDEWALKS WIDER THAN 6 FT., INSTALL LONGITUDINAL SAW JOINT AT CENTERLINE OR AT A SPACING NOT TO EXCEED 5 FT. TRANSVERSE SAW-CUT JOINT SPACING EQUAL TO HALF SIDEWALK WIDTH.
  - IF SIDEWALK IS REINFORCED, NO STEEL SHALL BE PLACED THROUGH AN EXPANSION JOINT.



**HEAVY DUTY CONCRETE PAVEMENT**  
 NOT TO SCALE

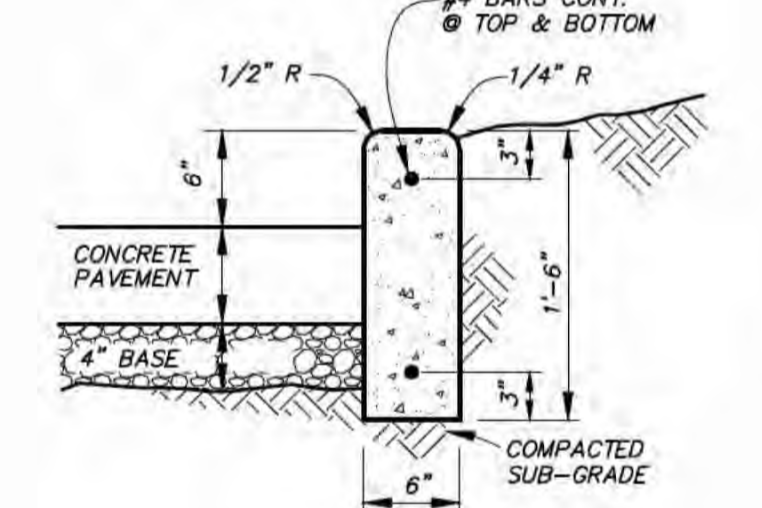


**STANDARD DUTY CONCRETE PAVEMENT**  
 NOT TO SCALE



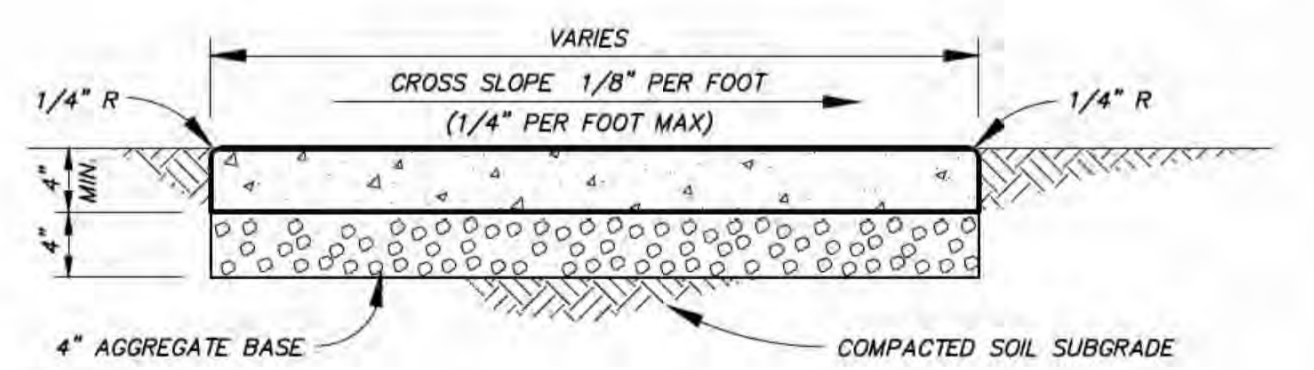
**6" INTEGRAL CONCRETE CURB SECTION**  
 NOT TO SCALE

- NOTES:**
- CONCRETE SHALL BE 4000 PSI @ 28 DAYS.
  - CONCRETE SHALL BE 4000 PSI @ 28 DAYS CONCRETE.
  - INSTALL TRANSVERSE EXPANSION JOINTS TO MATCH STREET OR CURB AND GUTTER EXPANSION JOINTS AND AT ALL DRIVEWAY APPROACHES, FIXED STRUCTURES, BUILDINGS, AND SIDEWALK RAMPS. SPACING SHALL NOT EXCEED 100'.
  - FOR SIDEWALKS UP TO 6 FT. WIDE, INSTALL TRANSVERSE SAW-CUT JOINTS AT SPACING EQUAL TO SIDEWALK WIDTH.
  - FOR SIDEWALKS WIDER THAN 6 FT., INSTALL LONGITUDINAL SAW JOINT AT CENTERLINE OR AT A SPACING NOT TO EXCEED 5 FT. TRANSVERSE SAW-CUT JOINT SPACING EQUAL TO HALF SIDEWALK WIDTH.
  - IF SIDEWALK IS REINFORCED, NO STEEL SHALL BE PLACED THROUGH AN EXPANSION JOINT.



**STAND UP CURB (ALTERNATE)**  
 NOT TO SCALE

- NOTES:**
- CONCRETE SHALL BE 4,000 PSI @ 28 DAYS CONCRETE.
  - PROVIDE 1" DEEP x 1/4" WIDE CONTROL JOINTS AT MAXIMUM 10' SPACING.
  - PROVIDE 1/2" EXPANSION JOINTS AT MAXIMUM 60' INTERVALS AND AT EXISTING CONCRETE USING #4 DOWELS x 12" LGT. - TOP AND BOTTOM - PREVENT BONDAGE TO CONCRETE AT ONE END.



**CONCRETE SIDEWALK**  
 NOT TO SCALE

- NOTES:**
- SIDEWALK SHALL BE PORTLAND CEMENT CONCRETE.
  - SIDEWALK SHALL BE 4000 PSI @ 28 DAYS CONCRETE.
  - INSTALL TRANSVERSE EXPANSION JOINTS TO MATCH STREET OR CURB AND GUTTER EXPANSION JOINTS AND AT ALL DRIVEWAY APPROACHES, FIXED STRUCTURES, BUILDINGS, AND SIDEWALK RAMPS. SPACING SHALL NOT EXCEED 100'.
  - FOR SIDEWALKS UP TO 6 FT. WIDE, INSTALL TRANSVERSE SAW-CUT JOINTS AT SPACING EQUAL TO SIDEWALK WIDTH.
  - FOR SIDEWALKS WIDER THAN 6 FT., INSTALL LONGITUDINAL SAW JOINT AT CENTERLINE OR AT A SPACING NOT TO EXCEED 5 FT. TRANSVERSE SAW-CUT JOINT SPACING EQUAL TO HALF SIDEWALK WIDTH.
  - IF SIDEWALK IS REINFORCED, NO STEEL SHALL BE PLACED THROUGH AN EXPANSION JOINT.