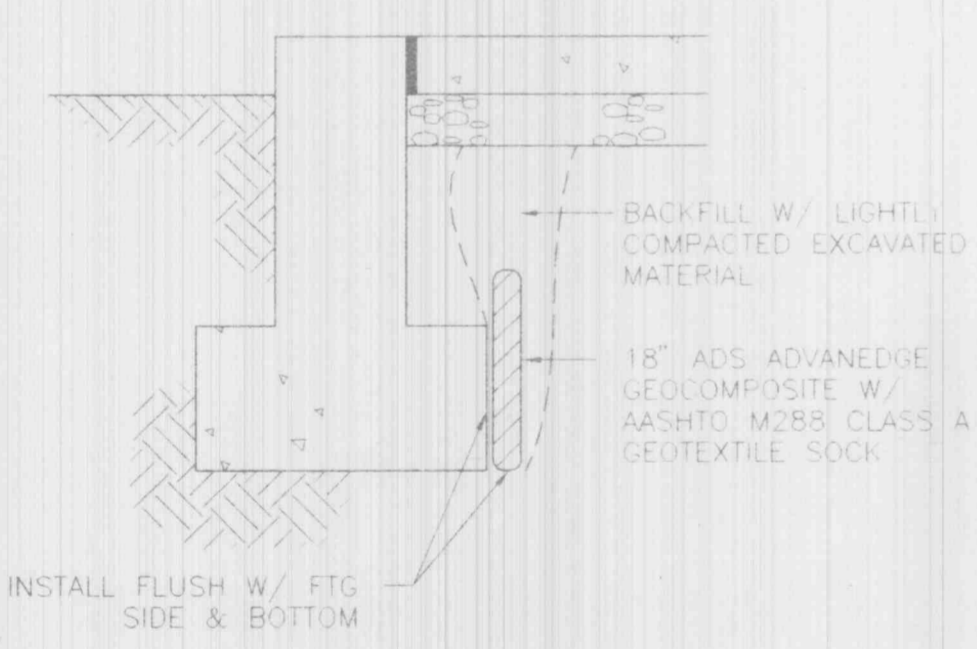
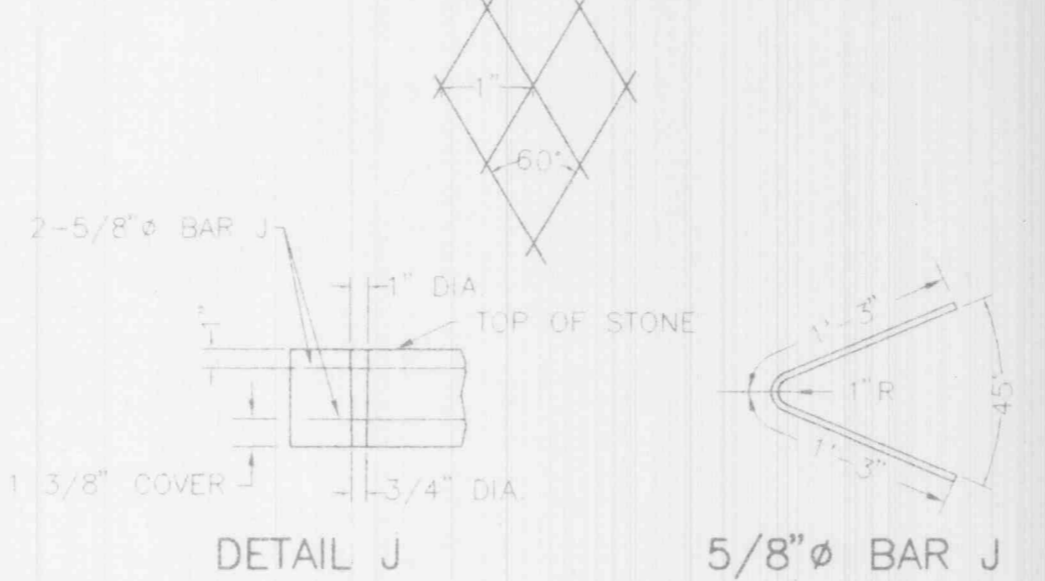


**A** CLASS "C" PIPE BEDDING  
2 NOT TO SCALE

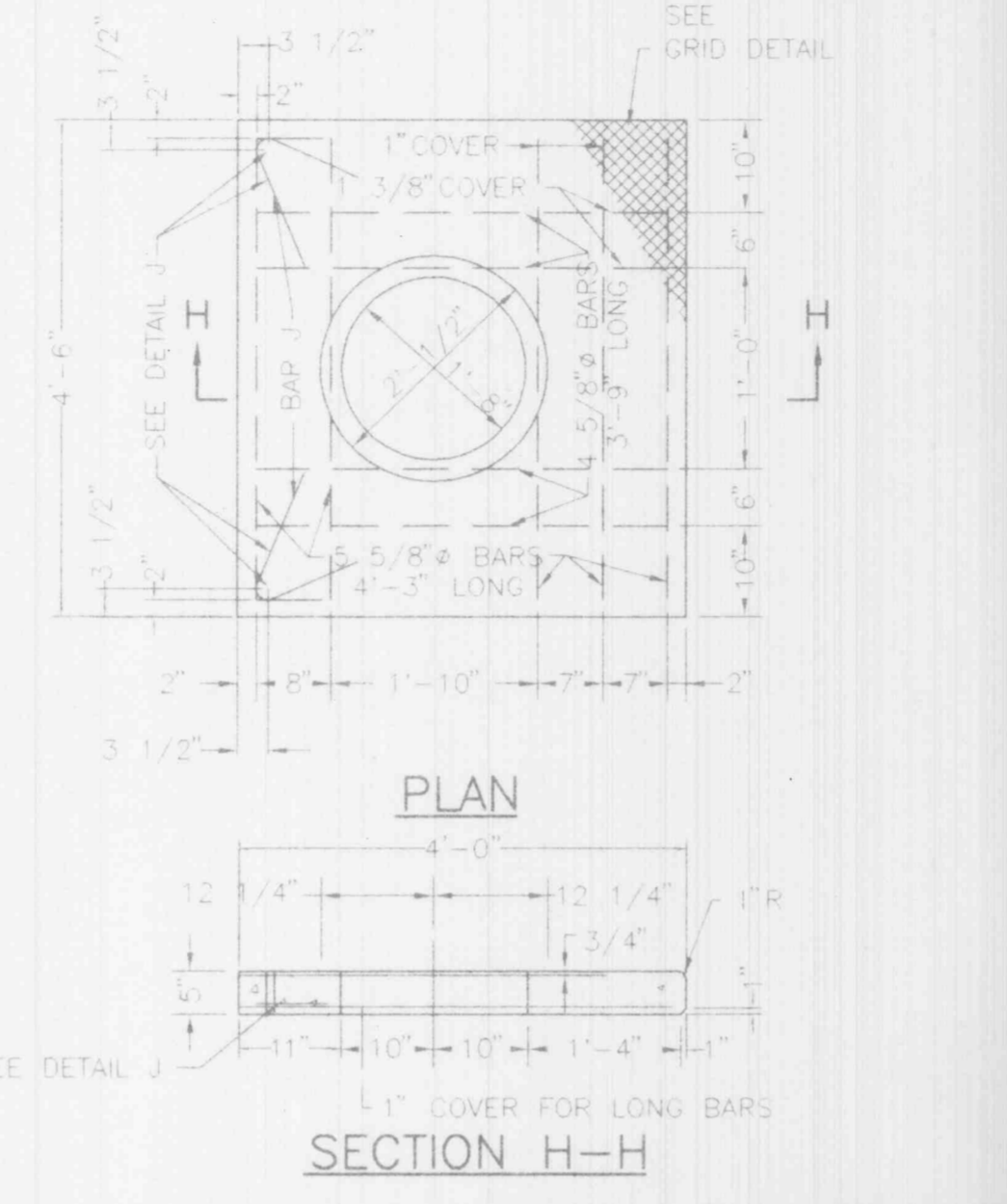


**B** SUBDRAIN INSTALLATION DETAIL  
2 NOT TO SCALE

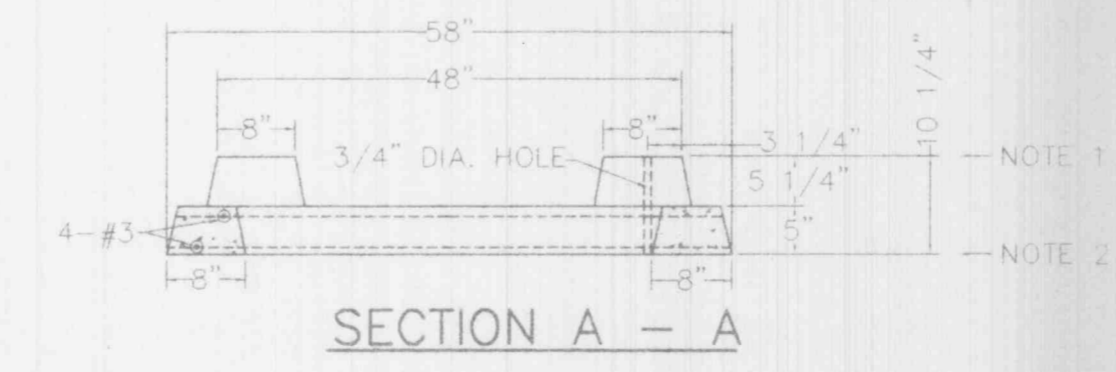
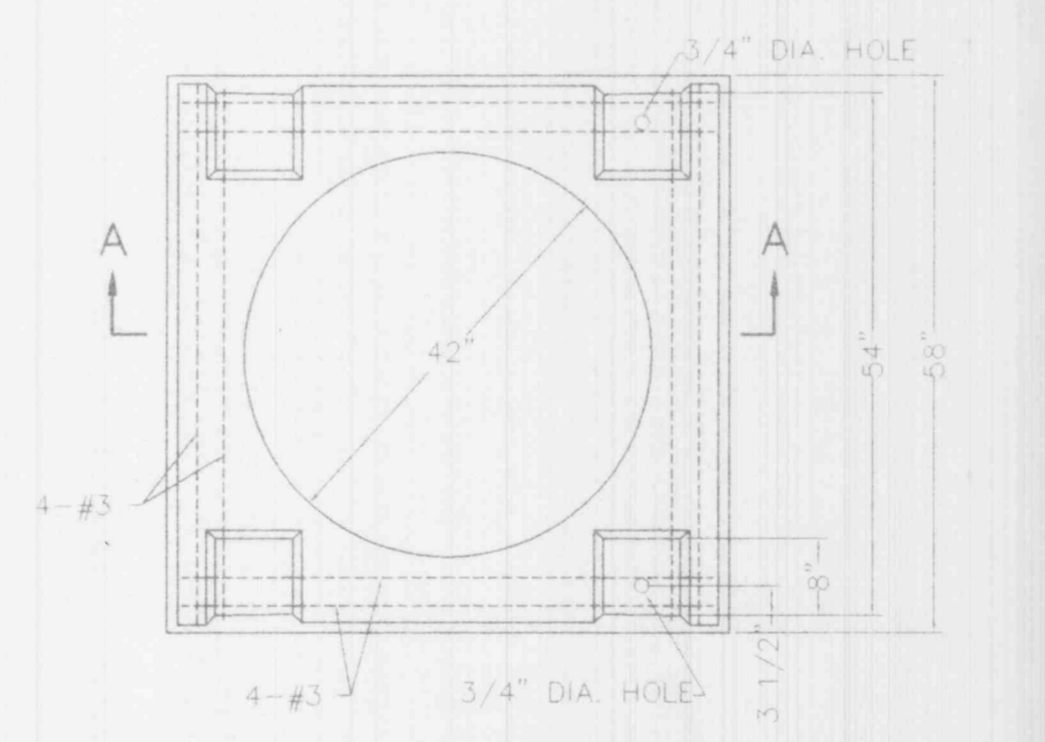
THE DOWELED INLET STONE SHALL BE USED AT ALL LOCATIONS.



**C** REINFORCED CONCRETE STANDARD STREET INLET  
2 NOT TO SCALE

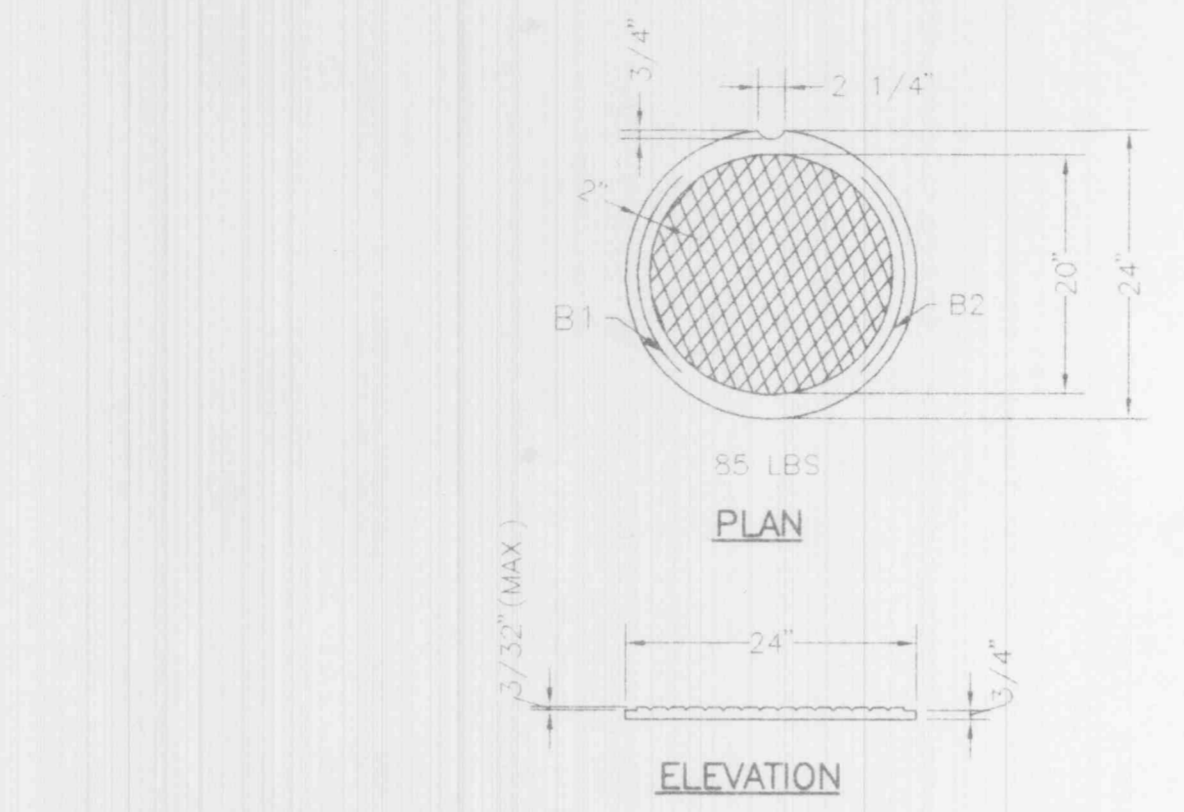


**D** PRE-CAST CONCRETE UNIT FOR 4 WAY AREA INLET  
2 NOT TO SCALE

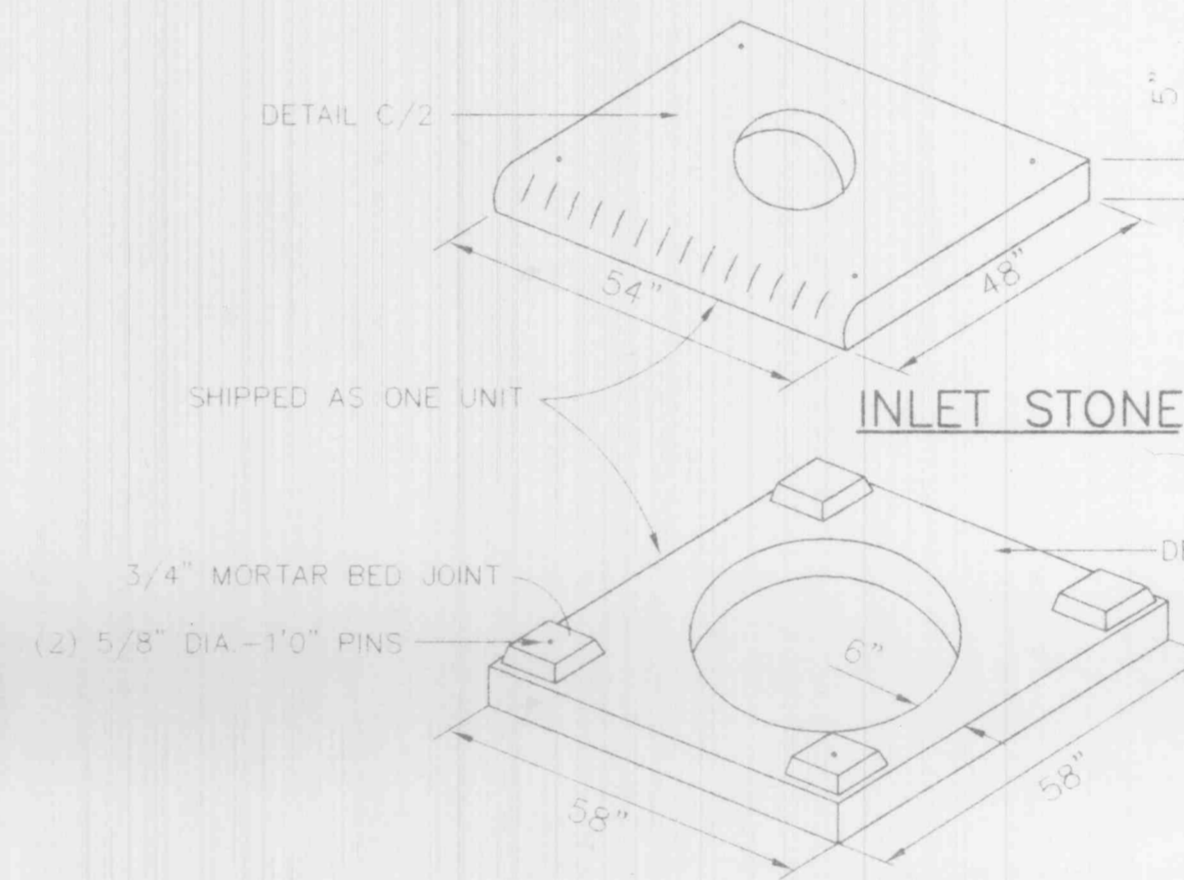


- NOTES
1. SET STANDARD INLET STONE IN 3/4" MORTAR BED AND DOWEL WITH 5/8" 1'-0" LONG PINS AND GROUT.
  2. RAISE TO FINAL GRADE WITH COURSES OF BRICK AND SET THE UNIT TO BASE WITH 3/4" MORTAR BED.
  3. THIS UNIT TO BE USED WITH 42" I.D., BASE OR ADAPTER.

**E** PRECAST CONCRETE AREA INLET  
2 NOT TO SCALE



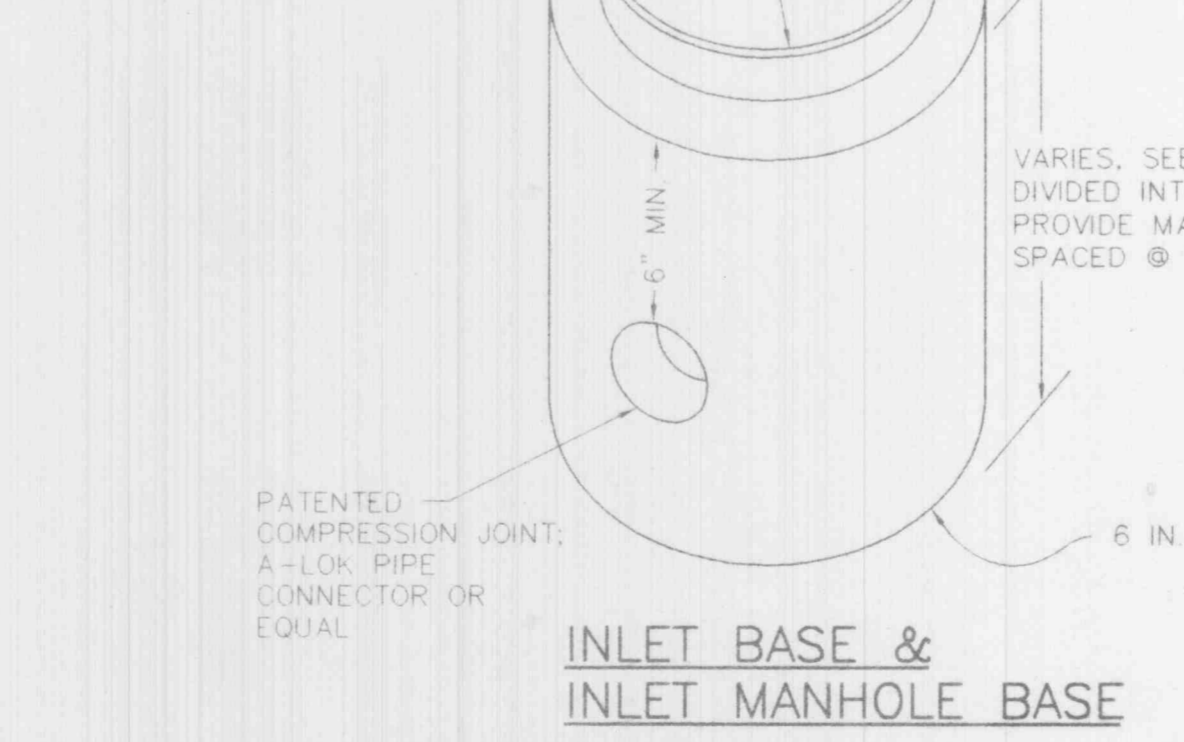
**G** STANDARD CAST IRON INLET COVER  
2 NOT TO SCALE



**H** 4 WAY CONCRETE UNIT  
2 NOT TO SCALE



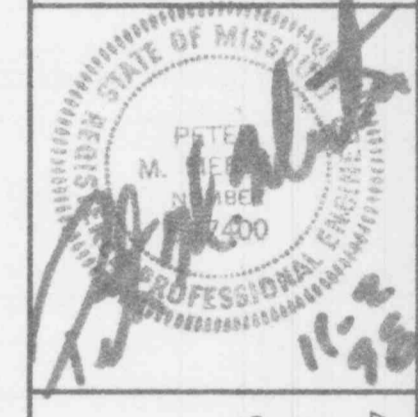
**I** ADAPTER RING  
2 NOT TO SCALE



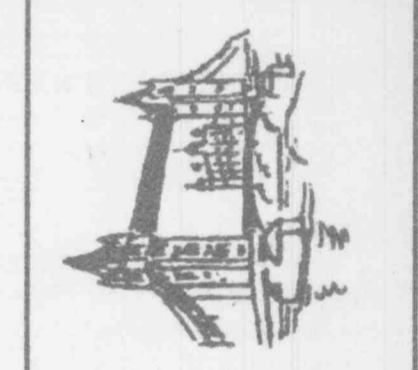
**J** INLET BASE & INLET MANHOLE BASE  
2 NOT TO SCALE

- NOTES
- A. THE PROFESSIONAL WHOSE SIGNATURE AND PERSONAL SEAL APPEARS HEREON ASSUMES RESPONSIBILITY ONLY FOR WHAT APPEARS ON THIS DRAWING AND DISCLAIMS (PURSUANT TO SECTION 327.411 RSMO) ANY RESPONSIBILITY FOR ALL OTHER DRAWINGS, SPECIFICATIONS, ESTIMATES, REPORTS, SURVEYS OR OTHER DOCUMENTS OR INSTRUMENTS NOT SEALED BY THE UNDERSIGNED PROFESSIONAL.
  - B. SEE DWG 1 FOR GENERAL NOTES.
  - C. TYPICAL SECTIONS AND DETAILS ARE FOR THE PURPOSE OF INDICATING GENERAL DESIGN AND CONSTRUCTION REQUIREMENTS. ACTUAL CONSTRUCTION SHALL CONFORM TO ALL OF THE INFORMATION PROVIDED IN THE PLAN SET.
  - D. DO NOT SCALE DWG, FOLLOW DIMENSIONS.
- KEYED NOTES
1. USE MSD 3 BACKFILL IN PAVEMENT AREAS; USE MATERIAL EXCAVATED FROM SEWER TRENCH IN OTHER AREAS.

NO.	DATE	REVISIONS	BY	APP'D
1				
2				
3				
4				
5				
6				
7				



**P. M. M.**  
Professional Engineer  
Engineering & Land Surveying  
2536 Old Hwy. 94 So., Ste. 216  
St. Charles, Missouri 63303  
314 / 936-2128 1098-7



SEWERAGE & DRAINAGE DETAILS  
HILLSIDE AUTO REPAIR  
STORM WATER IMPROVEMENTS  
ST. CHARLES COUNTY, MISSOURI

Date: 10/30/98  
Designed by: P.M.M.  
Drawn by: F.M.R.  
Checked by: P.M.M.

SHEET NO.  
2 of 3