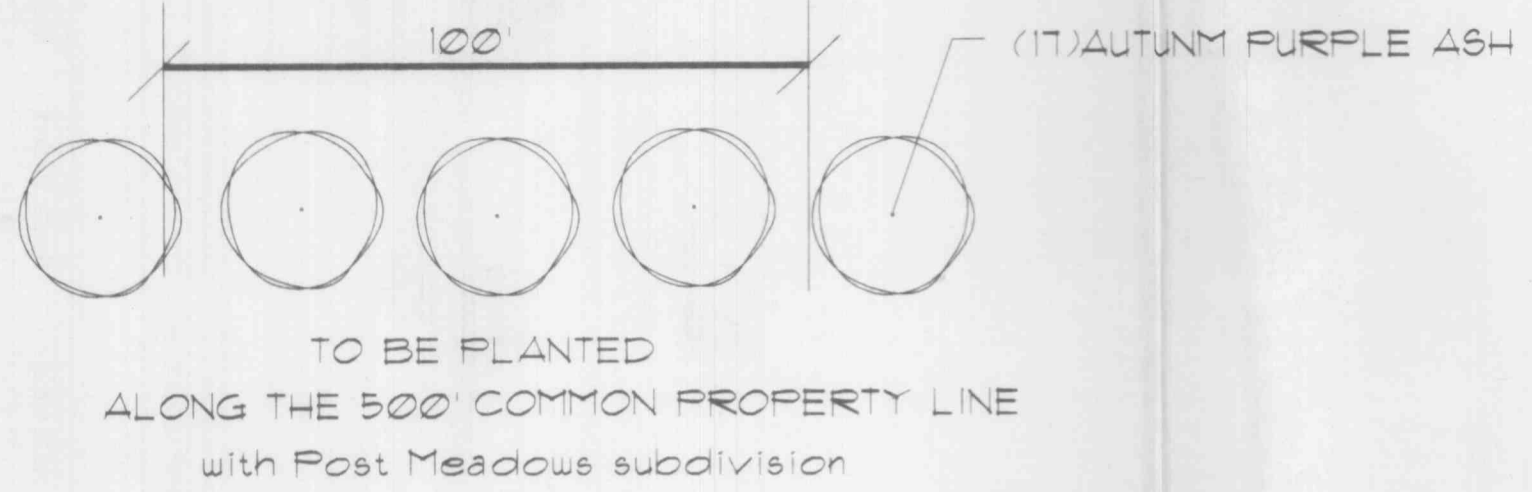
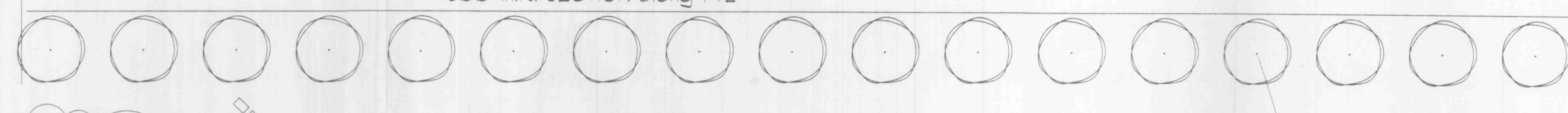


DETAIL  
TYPICAL 100 SECTION

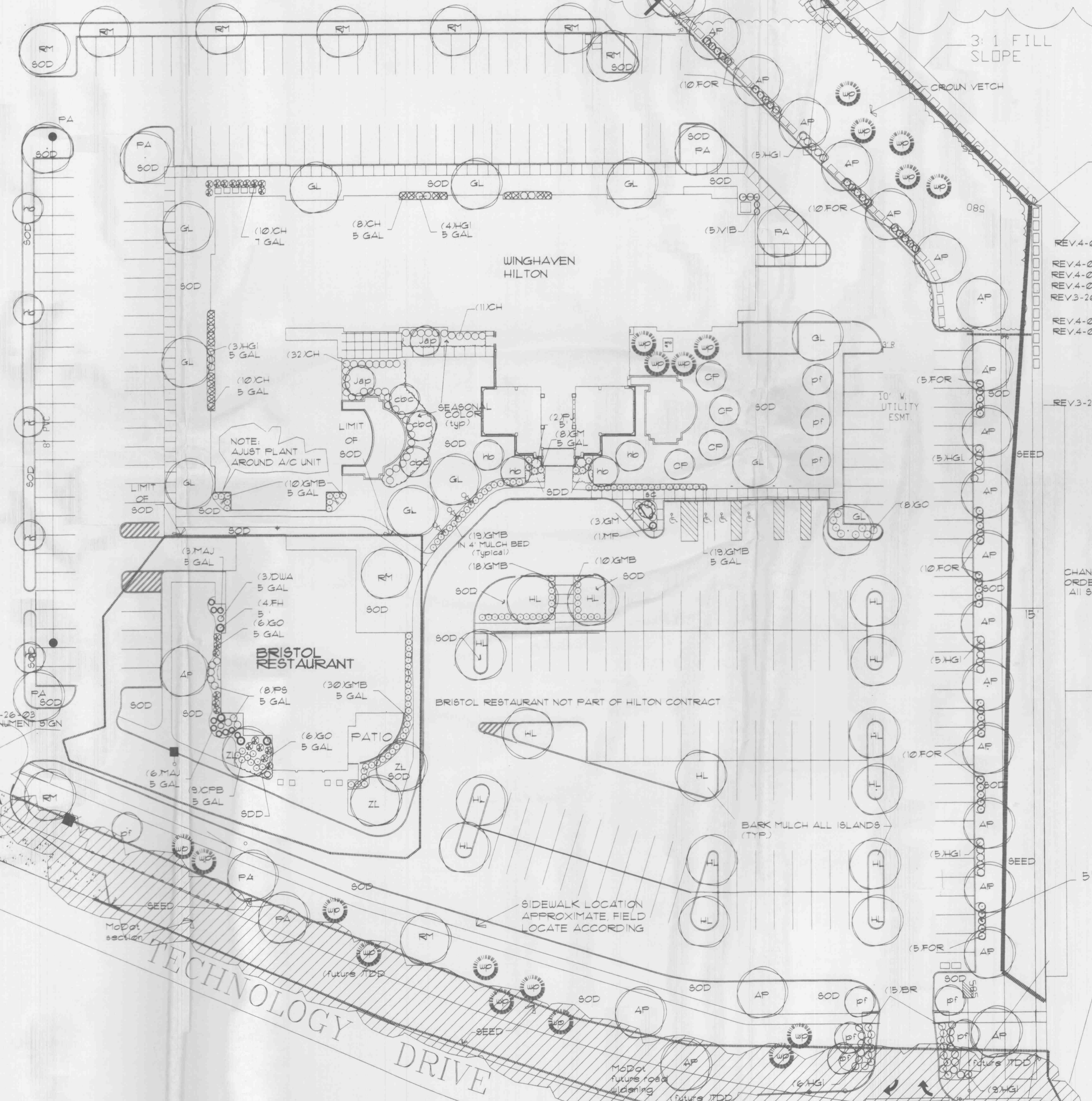


TO BE PLANTED  
ALONG THE 500' COMMON PROPERTY LINE  
with Post Meadows subdivision

500 In.ft. SECTION along P/L



(17) AP



PLANT MATERIAL LIST

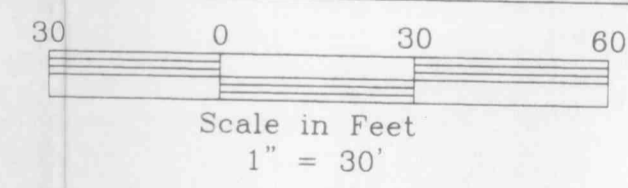
REV	QTY	PLANT CODE	PLANT NAME	SIZE
REV 4-03-03	1	AP	AUTUMN PURPLE ASH	25-3'
REV 4-03-03	1	HL	HONEYLOCUST	25-3'
REV 4-03-03	1	GL	PATMORE ASH	25-3'
REV 4-03-03	1	GL	GREENSPIRE LINDEN	25-3'
REV 4-03-03	1	GL	RED MAPLE	25-3'
REV 4-03-03	1	GL	CLEVELAND SELECT PEAR	25-3'
REV 4-03-03	1	GL	FRANZ'S RED PEAR	25-3'
REV 4-03-03	1	GL	JAPANESE MAPLE	5-6'
REV 4-03-03	1	GL	HORNBEAM	2-2.5'
REV 4-03-03	1	GL	ZELKOVA	25-3'
REV 4-03-03	1	GL	CORALBURST CRAB	2-2.5'
REV 4-03-03	1	GL	SPRINGSNOW CRAB	2-2.5'
REV 4-03-03	1	GL	SARGENTINA CRAB	2-2.5'
REV 4-03-03	1	GL	WHITE PINE	8-10'
REV 4-03-03	1	GL	PYRAMIDAL JUNIPER	5'
REV 4-03-03	1	GL	CHINA HOLLY	5 GAL
REV 4-03-03	1	GL	DENSIFORMIS YEW	8-24"
REV 4-03-03	1	GL	GREEN MOUNTAIN BOXWOOD	8-24"
REV 4-03-03	1	GL	GREY OUL JUNIPER	5 GAL
REV 4-03-03	1	GL	BROADMOOR JUNIPER	5 GAL
REV 4-03-03	1	GL	HENRY GARNET ITEA	5 GAL
REV 4-03-03	1	GL	DWARF FORSYTHIA	5 GAL
REV 4-03-03	1	GL	MUGHO FINE	15-18"
REV 4-03-03	1	GL	PURPLE SANDCHERRY	2-3'
REV 4-03-03	1	GL	CRIMSON PYGMY BARBERRY	5 GAL
REV 4-03-03	1	GL	GOLDFOUND SPIREA	5 GAL
REV 4-03-03	1	GL	STELLA D'ORO DAYLILY	1 GAL
REV 4-03-03	1	GL	MINI ARCADIA JUNIPER	5 GAL
REV 4-03-03	1	GL	FOSTER HOLLY	5 GAL
REV 4-03-03	1	GL	DWARF HAMELN GRASS	5 GAL
REV 4-03-03	1	GL	CHINA HOLLY	1 GAL
REV 4-03-03	1	GL	VIBURNUM ADD TO BASE BID	2-3'
REV 4-03-03	1	GL	BARK MULCH	CY
REV 4-03-03	1	GL	CROWN VETCH	5Y
REV 4-03-03	1	GL	SOD inside REV 5-03-03	5Y
REV 4-03-03	1	GL	SEEDED LAWN as labeled	EACH

CHANGE ORDER # All Seed 800 845 580

REVISED LEGEND  
10-23-02  
1-14-03  
1-30-03  
2-18-03

NOTE: All planting beds shall be mulched with shredded bark, treated with trifluralin (weed herbicide) and spaced cut edges.  
SEASONAL COLOR by owner

LANDSCAPE PLAN



NOTE: All work in Modot ROW to be done once Technology Drive is widened. Landscape Contractor to fine grade, seed, & straw as part of Hilton Contract.

**NOTICE**  
This drawing is the property of A. Waldbart and Sons Nursery. Each plan formulated by our firm involves original thought and ideas; therefore, we reserve the copyright to any design prepared by our staff. Use of this plan and/or any portion thereof for competitive bids, pricing, or related purposes is illegal without our written permission.

**WINGHAVEN HILTON**

Date	Revised	Sheet
8-9-01	8-15-01	L-1
8-17-01	9-5-01	1-14-03
9-14-01	10-11-01	9-6-01
1-16-02	6-03-02	10-11-02
3-20-02	5-31-02	10-23-02
2-18-03		

895-4589

**A WALDBART AND SONS**  
Nursery  
Established 1872

Landscape Designers, Landscape Contractors & Nursermen  
1420 Teson Rd., Hazelwood, MO 63042