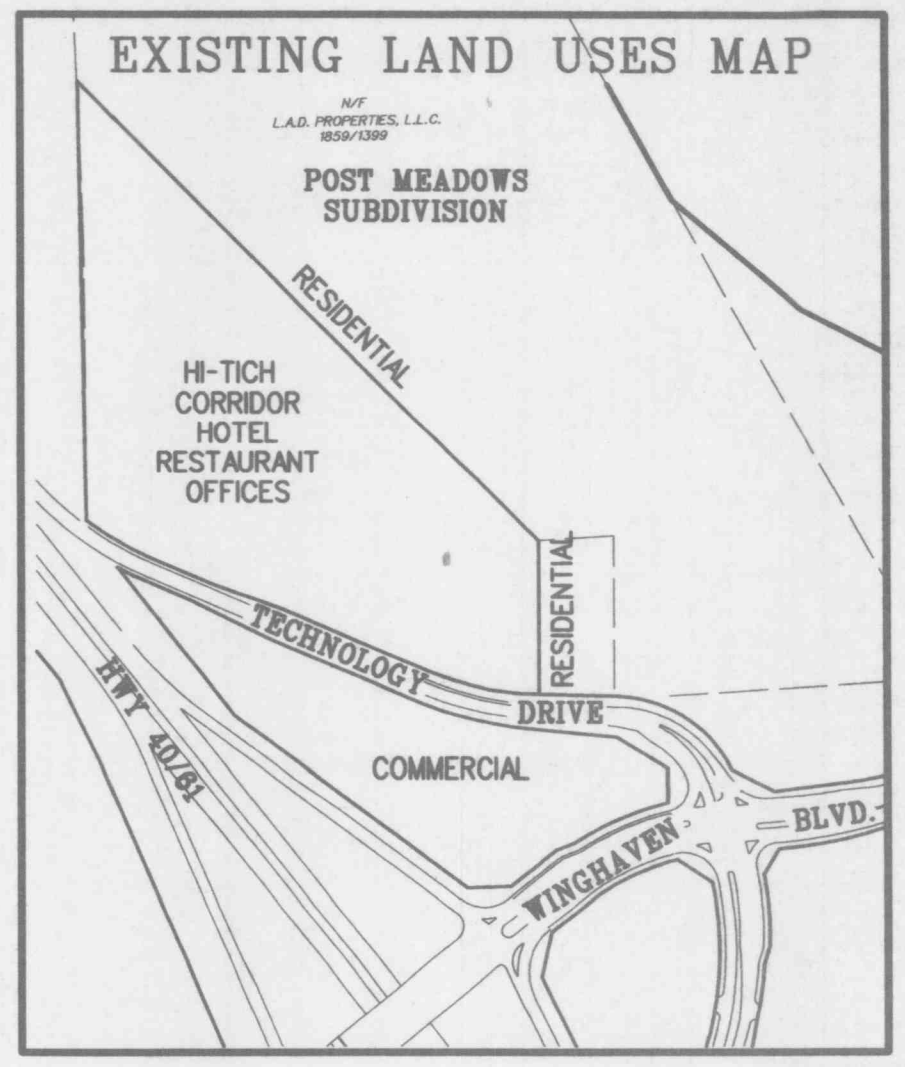
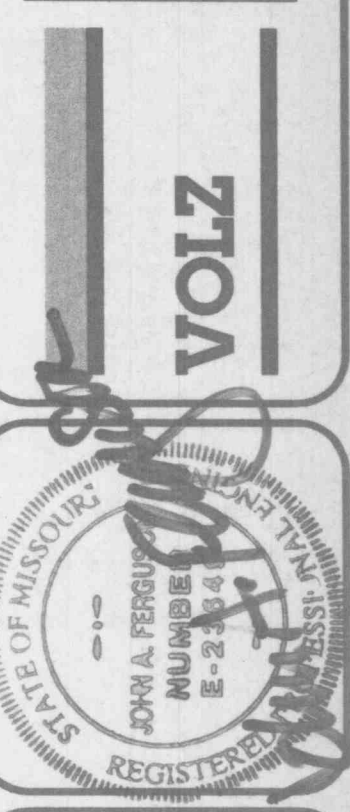


Scale in Feet
1" = 30'



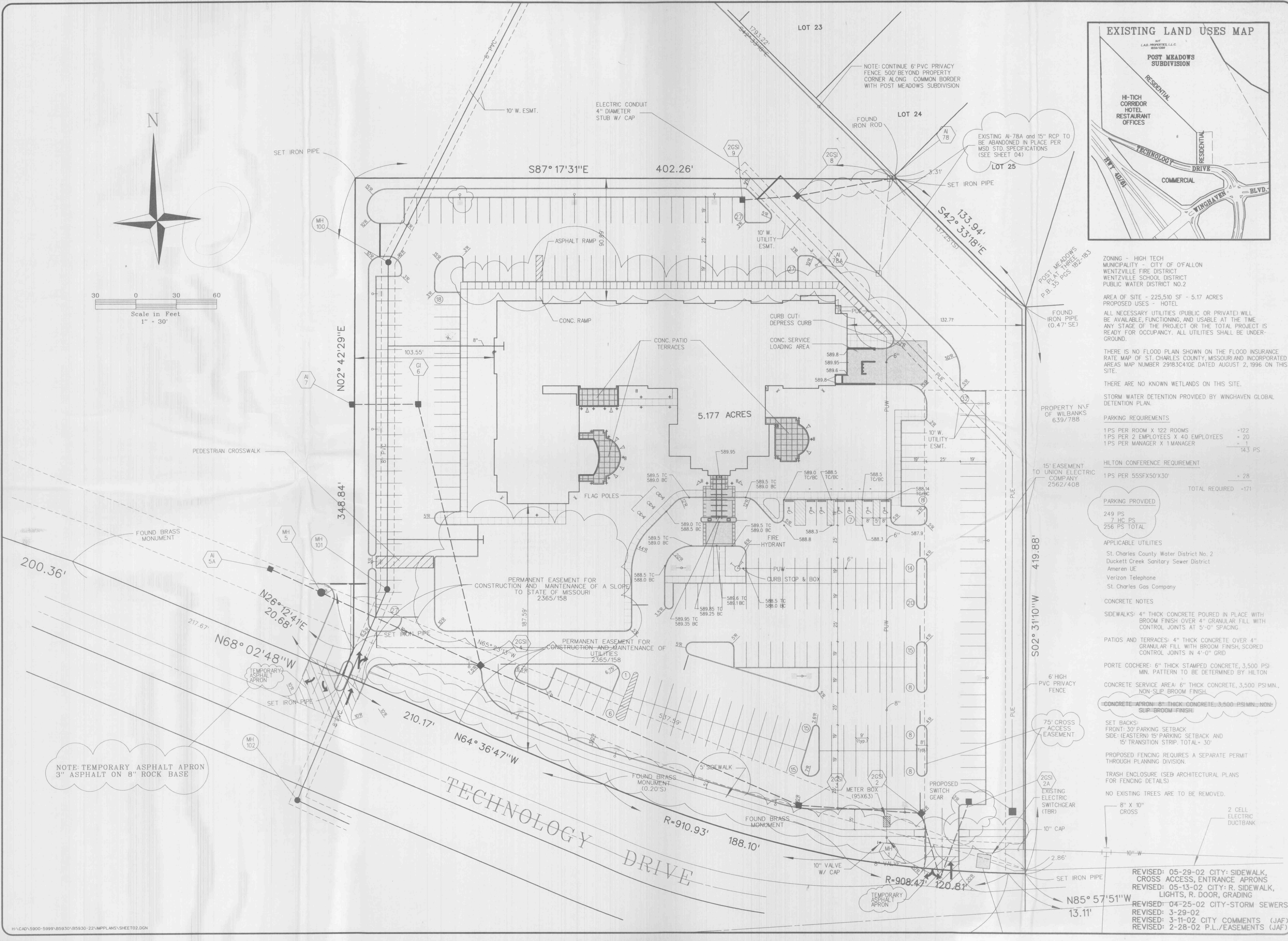
McEAGLE DEVELOPMENT, L.L.C.
689 CRAIG ROAD
ST. LOUIS, MO 63114
314-432-4320



REGISTERED PROFESSIONAL ENGINEER
STATE OF MISSOURI

HILTON AT WINGHAVEN

SITE PLAN
Design By: JAF
Drawn By: JRS
Checked By: JAF
859.30-22
02-13-12
02



NOTE: CONTINUE 6" PVC PRIVACY FENCE 500' BEYOND PROPERTY CORNER ALONG COMMON BORDER WITH POST MEADOWS SUBDIVISION

EXISTING A1-78A and 15" RCP TO BE ABANDONED IN PLACE PER MSD STD. SPECIFICATIONS (SEE SHEET 04)

POST MEADOWS P.L.A. TRACED P.B. 35 Pgs 82-183

PROPERTY N/F OF WILBANKS 639/788

15' EASEMENT TO UNION ELECTRIC COMPANY 2562/408

ZONING - HIGH TECH
MUNICIPALITY - CITY OF FALLON
WENTZVILLE FIRE DISTRICT
WENTZVILLE SCHOOL DISTRICT
PUBLIC WATER DISTRICT NO.2

AREA OF SITE - 225,510 SF - 5.17 ACRES
PROPOSED USES - HOTEL
ALL NECESSARY UTILITIES (PUBLIC OR PRIVATE) WILL BE AVAILABLE, FUNCTIONING, AND USABLE AT THE TIME ANY STAGE OF THE PROJECT OR THE TOTAL PROJECT IS READY FOR OCCUPANCY. ALL UTILITIES SHALL BE UNDERGROUND.

THERE IS NO FLOOD PLAIN SHOWN ON THE FLOOD INSURANCE RATE MAP OF ST. CHARLES COUNTY, MISSOURI AND INCORPORATED AREAS MAP NUMBER 29183C410E DATED AUGUST 2, 1996 ON THIS SITE.

THERE ARE NO KNOWN WETLANDS ON THIS SITE.

STORM WATER DETENTION PROVIDED BY WINGHAVEN GLOBAL DETENTION PLAN.

PARKING REQUIREMENTS
1 PS PER ROOM X 122 ROOMS -122
1 PS PER 2 EMPLOYEES X 40 EMPLOYEES - 20
1 PS PER MANAGER X 1 MANAGER - 1
TOTAL REQUIRED -143 PS

HILTON CONFERENCE REQUIREMENT
1 PS PER 55FX50'X30' - 28
TOTAL REQUIRED -171

PARKING PROVIDED
249 PS
7 HC PS
256 PS TOTAL

APPLICABLE UTILITIES
St. Charles County Water District No. 2
Duckett Creek Sanitary Sewer District
Ameren UE
Verizon Telephone
St. Charles Gas Company

CONCRETE NOTES
SIDEWALKS: 4" THICK CONCRETE POURED IN PLACE WITH BROOM FINISH OVER 4" GRANULAR FILL WITH CONTROL JOINTS AT 5'-0" SPACING

PATIOS AND TERRACES: 4" THICK CONCRETE OVER 4" GRANULAR FILL WITH BROOM FINISH, SCORED CONTROL JOINTS IN 4'-0" GRID

PORTE COCHERE: 6" THICK STAMPED CONCRETE, 3,500 PSI MIN. PATTERN TO BE DETERMINED BY HILTON
CONCRETE SERVICE AREA: 6" THICK CONCRETE, 3,500 PSI MIN. NON-SLIP BROOM FINISH

CONCRETE APRON: 8" THICK CONCRETE, 3,500 PSI MIN. NON-SLIP BROOM FINISH

SET BACKS:
FRONT: 30' PARKING SETBACK
SIDE (EASTERN) 15' PARKING SETBACK AND 15' TRANSITION STRIP. TOTAL - 30'

PROPOSED FENCING REQUIRES A SEPARATE PERMIT THROUGH PLANNING DIVISION.
TRASH ENCLOSURE (SEE ARCHITECTURAL PLANS FOR FENCING DETAILS)

NO EXISTING TREES ARE TO BE REMOVED.
8" X 10" CROSS
2 CELL ELECTRIC DUCTBANK

REVISED: 05-29-02 CITY: SIDEWALK, CROSS ACCESS, ENTRANCE APRONS
REVISED: 05-13-02 CITY: R. SIDEWALK, LIGHTS, R. DOOR, GRADING
REVISED: 04-25-02 CITY-STORM SEWERS
REVISED: 3-29-02
REVISED: 3-11-02 CITY COMMENTS (JAF)
REVISED: 2-28-02 P.L./EASEMENTS (JAF)

NOTE: TEMPORARY ASPHALT APRON 3" ASPHALT ON 8" ROCK BASE