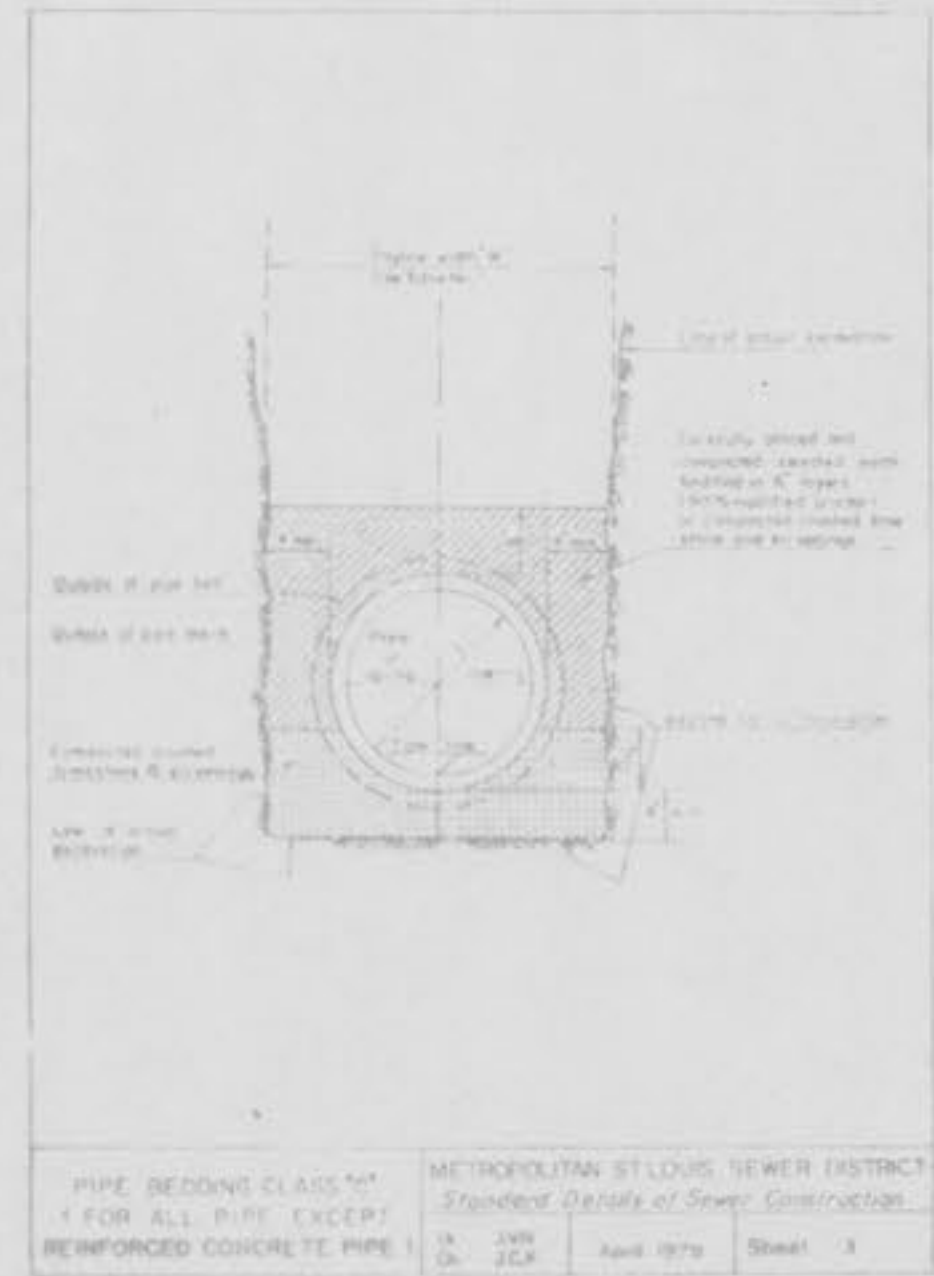


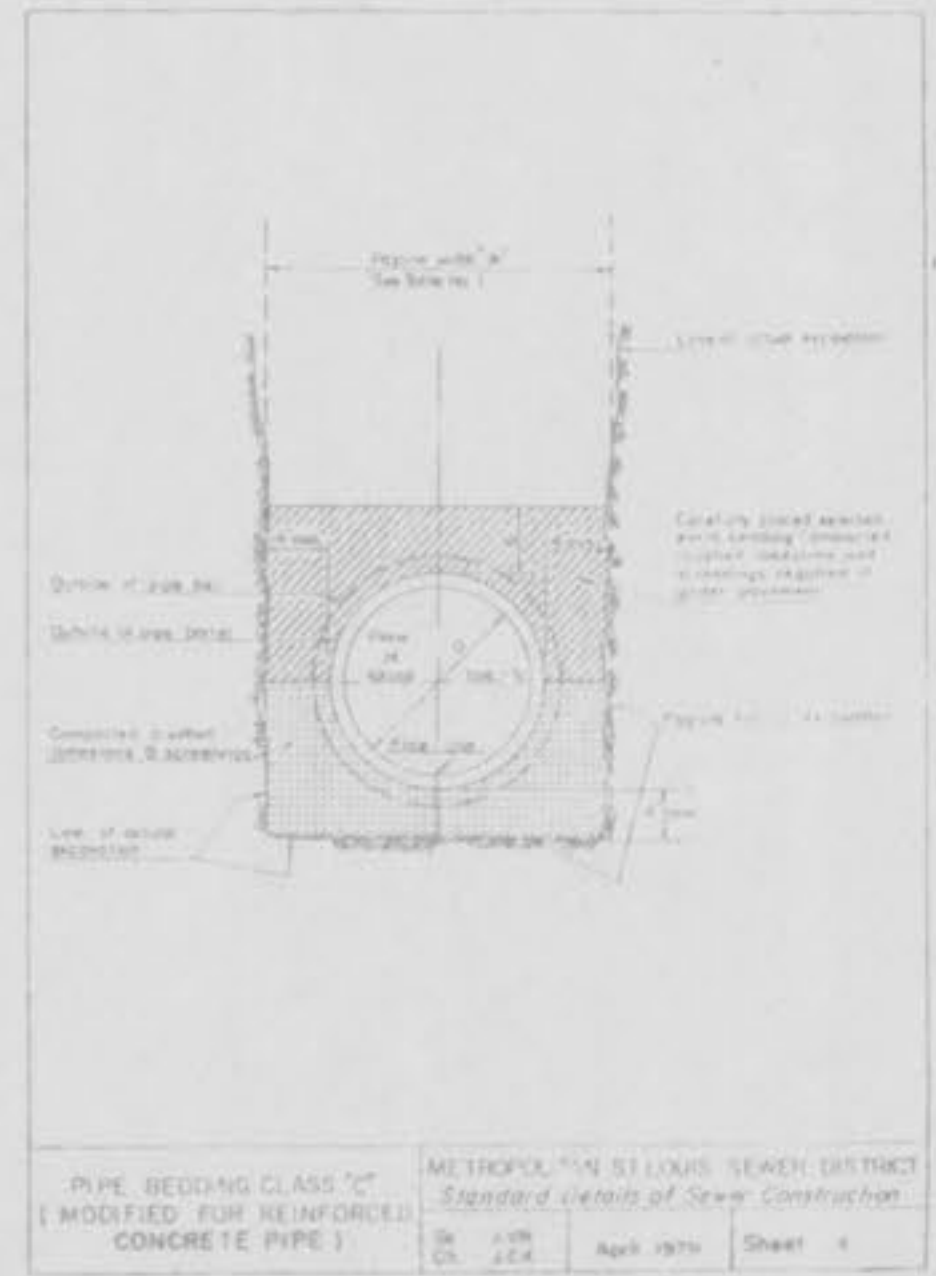
ROUND PIPE				HORIZONTAL ELLIPTICAL PIPE			
Outside Diameter	Inside Diameter	Wall Thickness	Weight per Foot	Outside Diameter	Inside Diameter	Wall Thickness	Weight per Foot
4	3.5	.5	10.7	4	3.5	.5	10.7
6	5.5	.5	15.9	6	5.5	.5	15.9
8	7.5	.5	21.1	8	7.5	.5	21.1
10	9.5	.5	26.3	10	9.5	.5	26.3
12	11.5	.5	31.5	12	11.5	.5	31.5
14	13.5	.5	36.7	14	13.5	.5	36.7
16	15.5	.5	41.9	16	15.5	.5	41.9
18	17.5	.5	47.1	18	17.5	.5	47.1
20	19.5	.5	52.3	20	19.5	.5	52.3
22	21.5	.5	57.5	22	21.5	.5	57.5
24	23.5	.5	62.7	24	23.5	.5	62.7
26	25.5	.5	67.9	26	25.5	.5	67.9
28	27.5	.5	73.1	28	27.5	.5	73.1
30	29.5	.5	78.3	30	29.5	.5	78.3
32	31.5	.5	83.5	32	31.5	.5	83.5
34	33.5	.5	88.7	34	33.5	.5	88.7
36	35.5	.5	93.9	36	35.5	.5	93.9
38	37.5	.5	99.1	38	37.5	.5	99.1
40	39.5	.5	104.3	40	39.5	.5	104.3
42	41.5	.5	109.5	42	41.5	.5	109.5
44	43.5	.5	114.7	44	43.5	.5	114.7
46	45.5	.5	119.9	46	45.5	.5	119.9
48	47.5	.5	125.1	48	47.5	.5	125.1
50	49.5	.5	130.3	50	49.5	.5	130.3
52	51.5	.5	135.5	52	51.5	.5	135.5
54	53.5	.5	140.7	54	53.5	.5	140.7
56	55.5	.5	145.9	56	55.5	.5	145.9
58	57.5	.5	151.1	58	57.5	.5	151.1
60	59.5	.5	156.3	60	59.5	.5	156.3
62	61.5	.5	161.5	62	61.5	.5	161.5
64	63.5	.5	166.7	64	63.5	.5	166.7
66	65.5	.5	171.9	66	65.5	.5	171.9
68	67.5	.5	177.1	68	67.5	.5	177.1
70	69.5	.5	182.3	70	69.5	.5	182.3
72	71.5	.5	187.5	72	71.5	.5	187.5
74	73.5	.5	192.7	74	73.5	.5	192.7
76	75.5	.5	197.9	76	75.5	.5	197.9
78	77.5	.5	203.1	78	77.5	.5	203.1
80	79.5	.5	208.3	80	79.5	.5	208.3
82	81.5	.5	213.5	82	81.5	.5	213.5
84	83.5	.5	218.7	84	83.5	.5	218.7
86	85.5	.5	223.9	86	85.5	.5	223.9
88	87.5	.5	229.1	88	87.5	.5	229.1
90	89.5	.5	234.3	90	89.5	.5	234.3
92	91.5	.5	239.5	92	91.5	.5	239.5
94	93.5	.5	244.7	94	93.5	.5	244.7
96	95.5	.5	249.9	96	95.5	.5	249.9
98	97.5	.5	255.1	98	97.5	.5	255.1
100	99.5	.5	260.3	100	99.5	.5	260.3

TABLE NO. 1  
 PAYLINE WIDTHS OF  
 TRENCH AND  
 QUANTITIES OF  
 CONCRETE

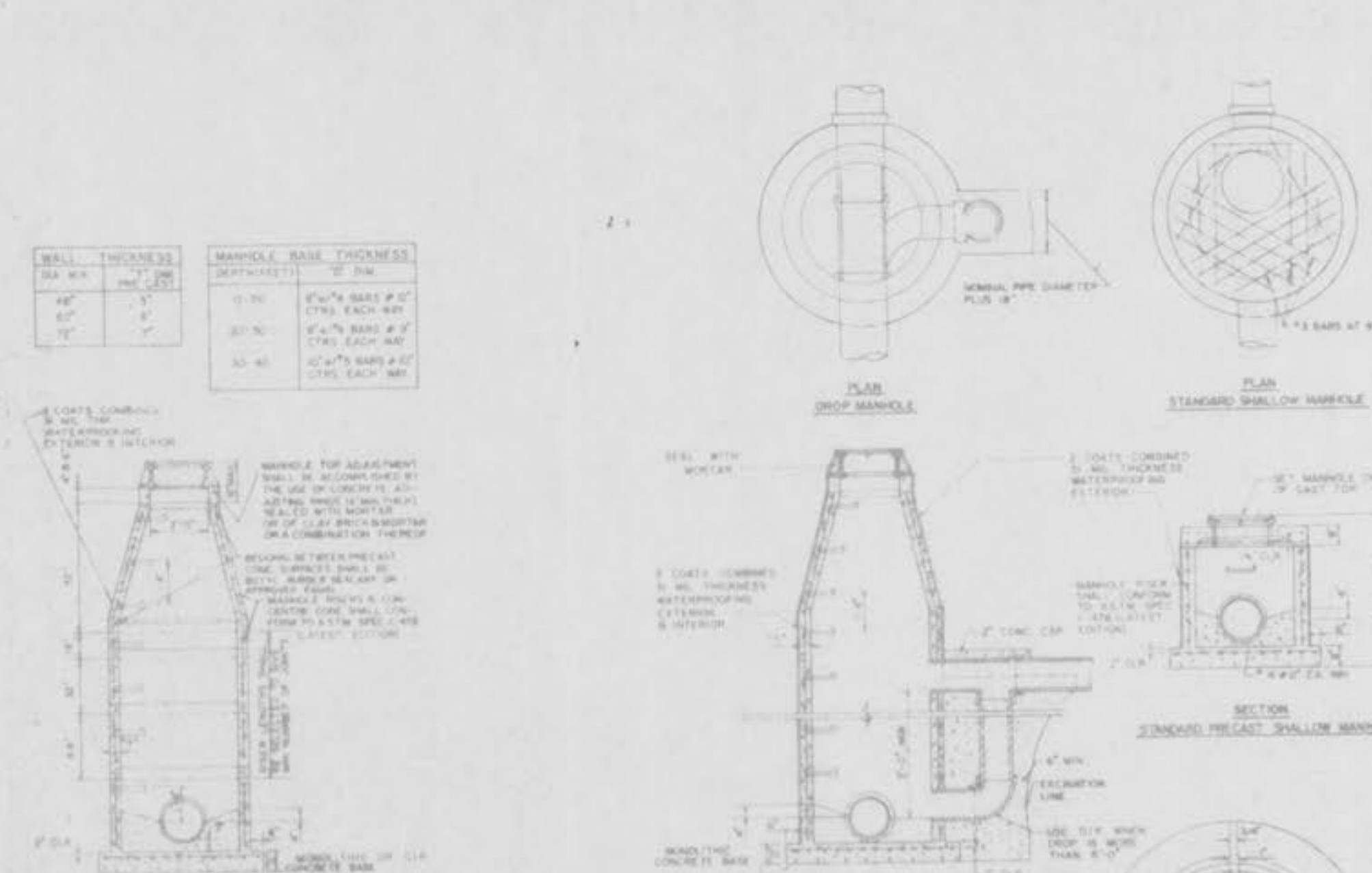
METROPOLITAN ST. LOUIS SEWER DISTRICT  
 Standard Details of Sewer Construction  
 D. 401  
 O. 416  
 April 1979 Sheet 1



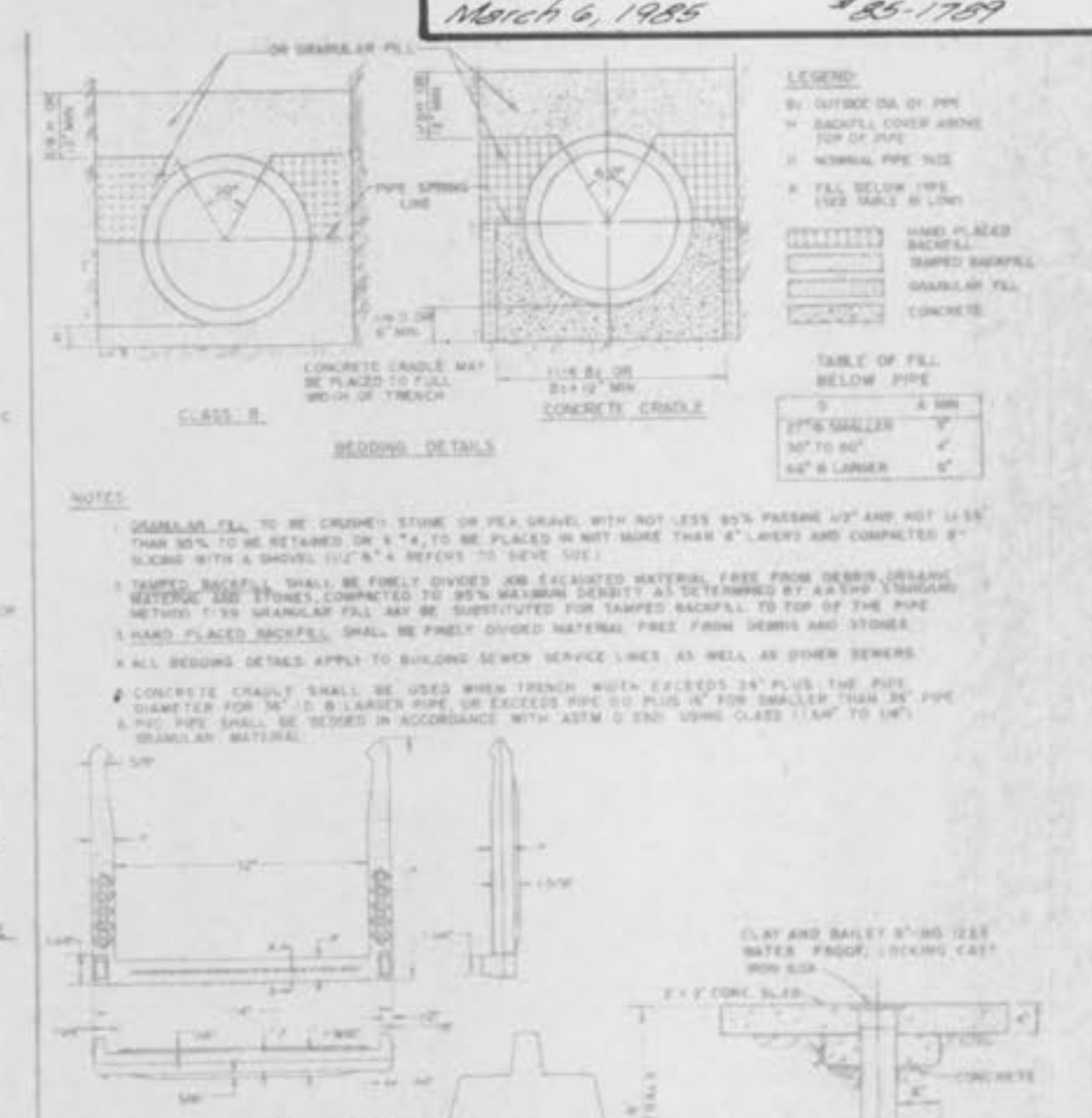
PIPE BEDDING CLASS "A"  
 (FOR ALL PIPE EXCEPT  
 REINFORCED CONCRETE PIPE)



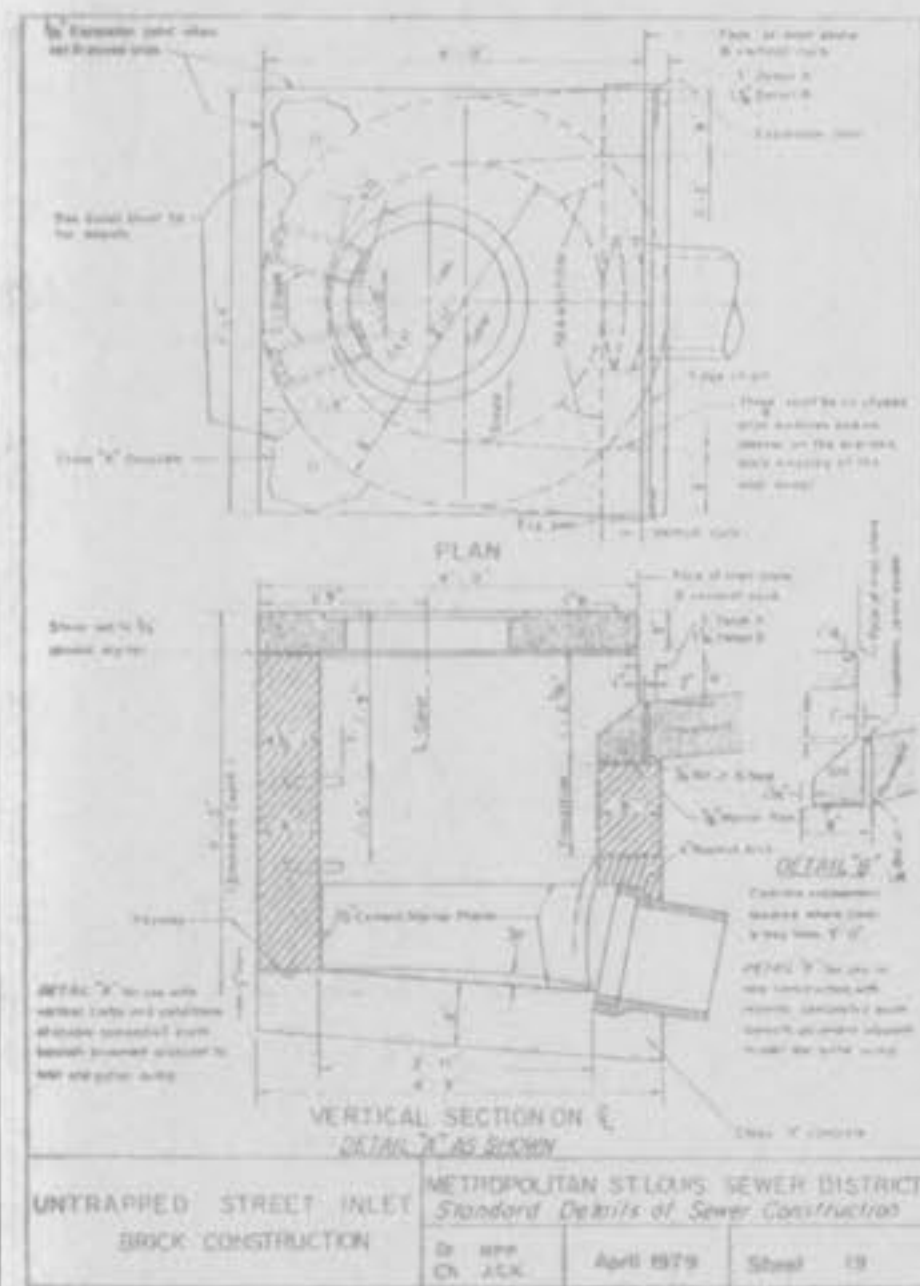
PIPE BEDDING CLASS "B"  
 (MODIFIED FOR REINFORCED  
 CONCRETE PIPE)



METROPOLITAN ST. LOUIS SEWER DISTRICT  
 Standard Details of Sewer Construction  
 D. 402  
 O. 424  
 April 1979 Sheet 4

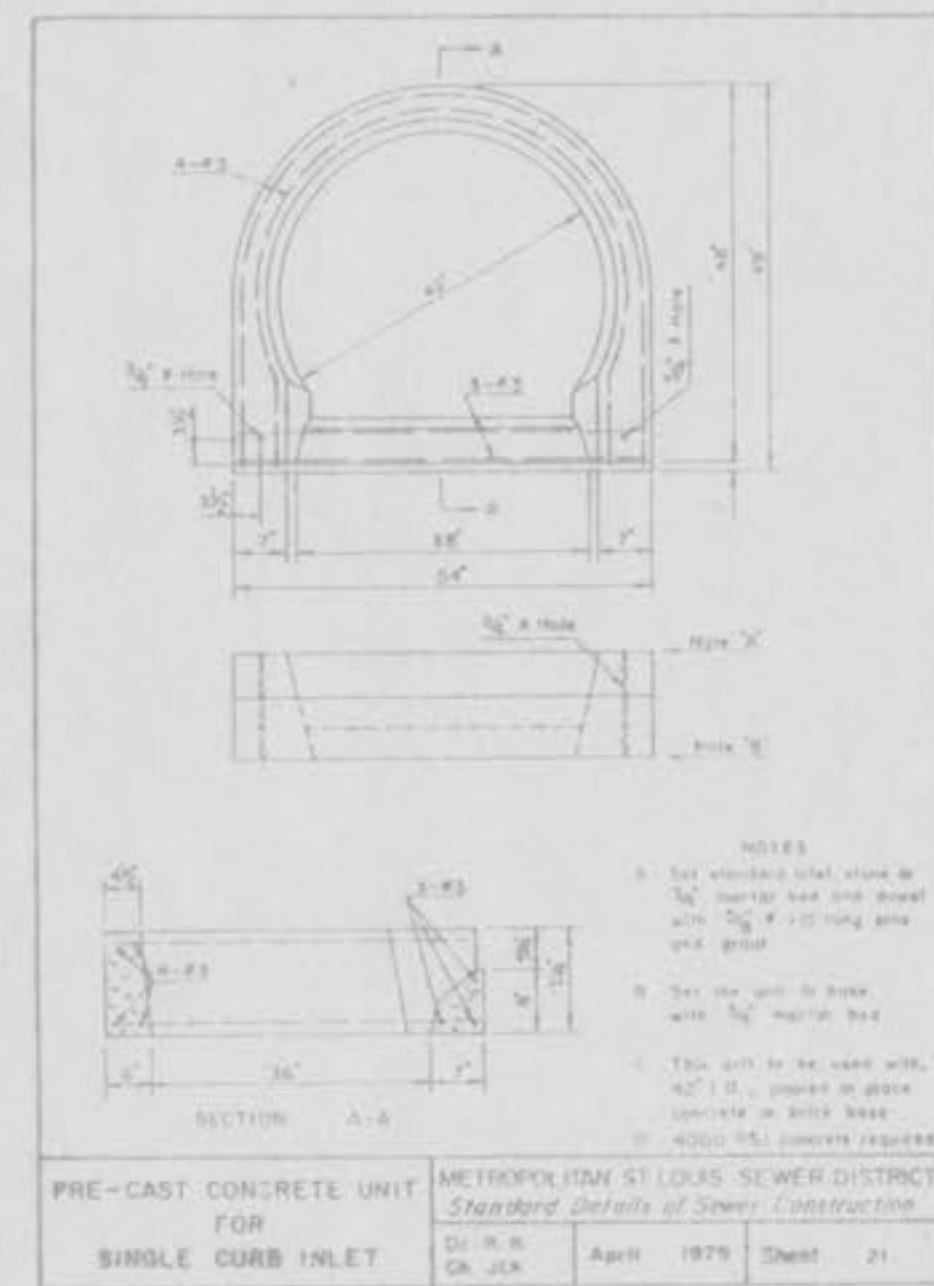


METROPOLITAN ST. LOUIS SEWER DISTRICT  
 Standard Details of Sewer Construction  
 D. 403  
 O. 425  
 April 1979 Sheet 5



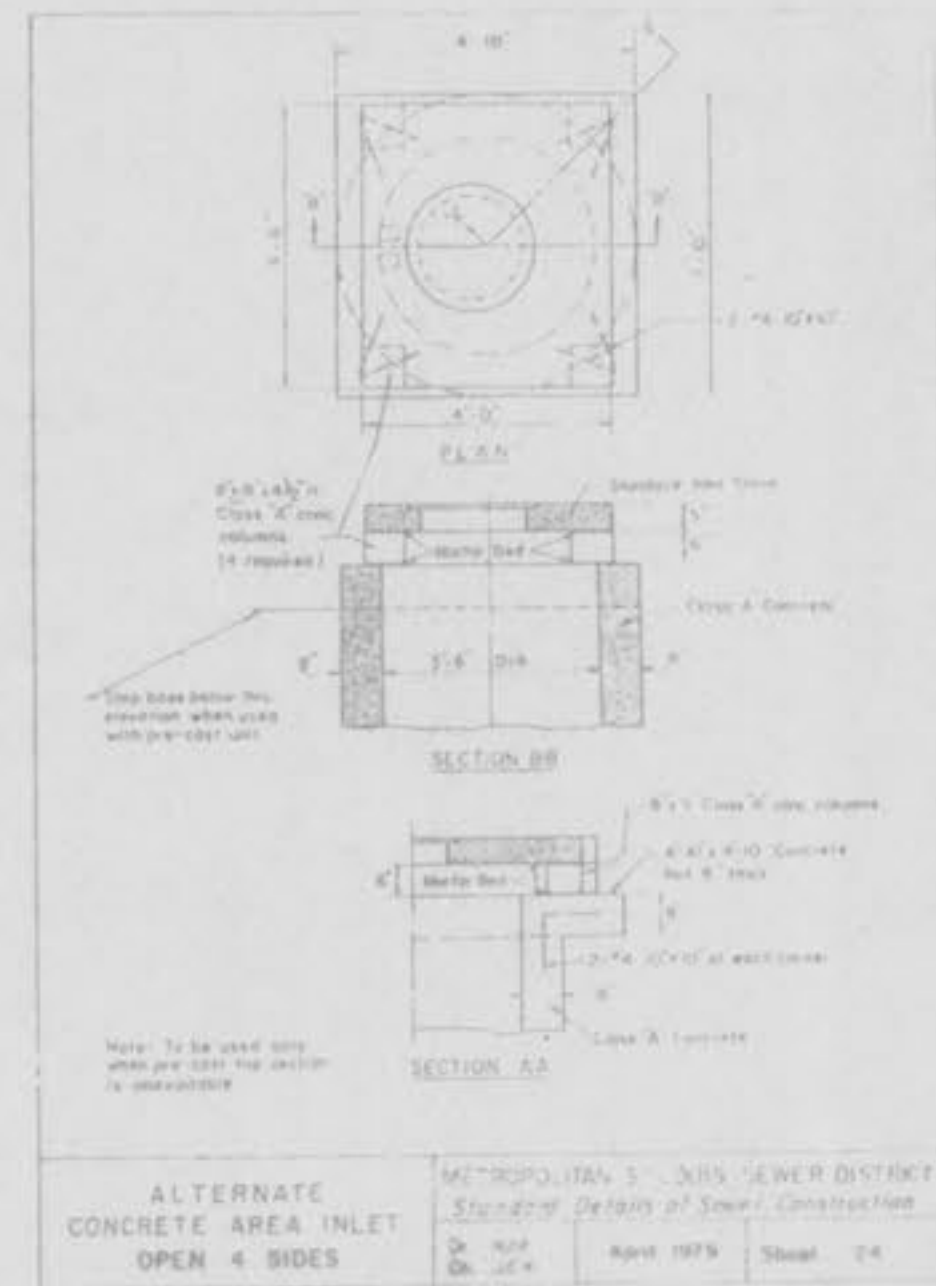
UNTRAPPED STREET INLET  
 BRICK CONSTRUCTION

METROPOLITAN ST. LOUIS SEWER DISTRICT  
 Standard Details of Sewer Construction  
 D. 404  
 O. 426  
 April 1979 Sheet 19



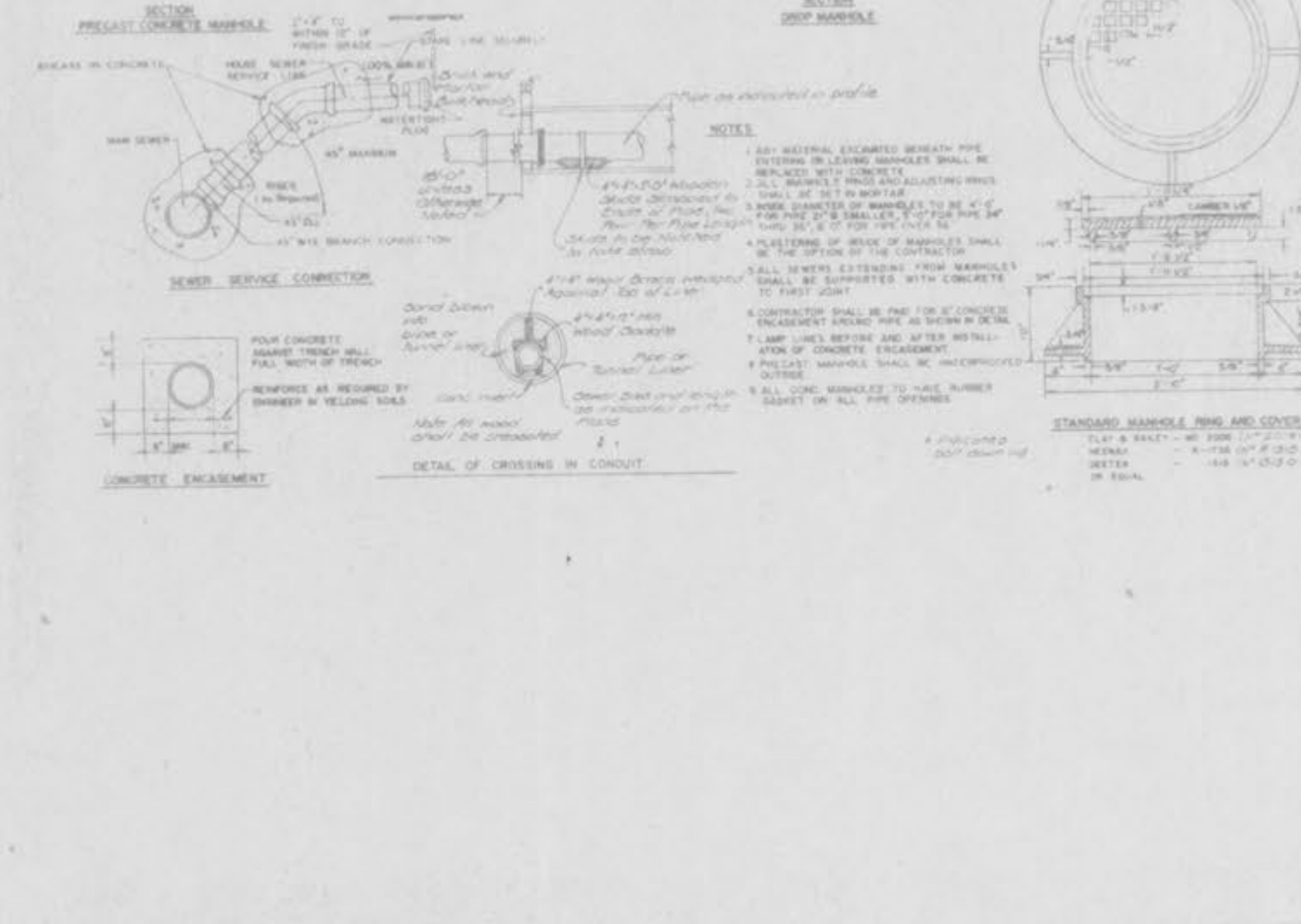
PRE-CAST CONCRETE UNIT  
 FOR  
 SINGLE CURB INLET

METROPOLITAN ST. LOUIS SEWER DISTRICT  
 Standard Details of Sewer Construction  
 D. 405  
 O. 427  
 April 1979 Sheet 21

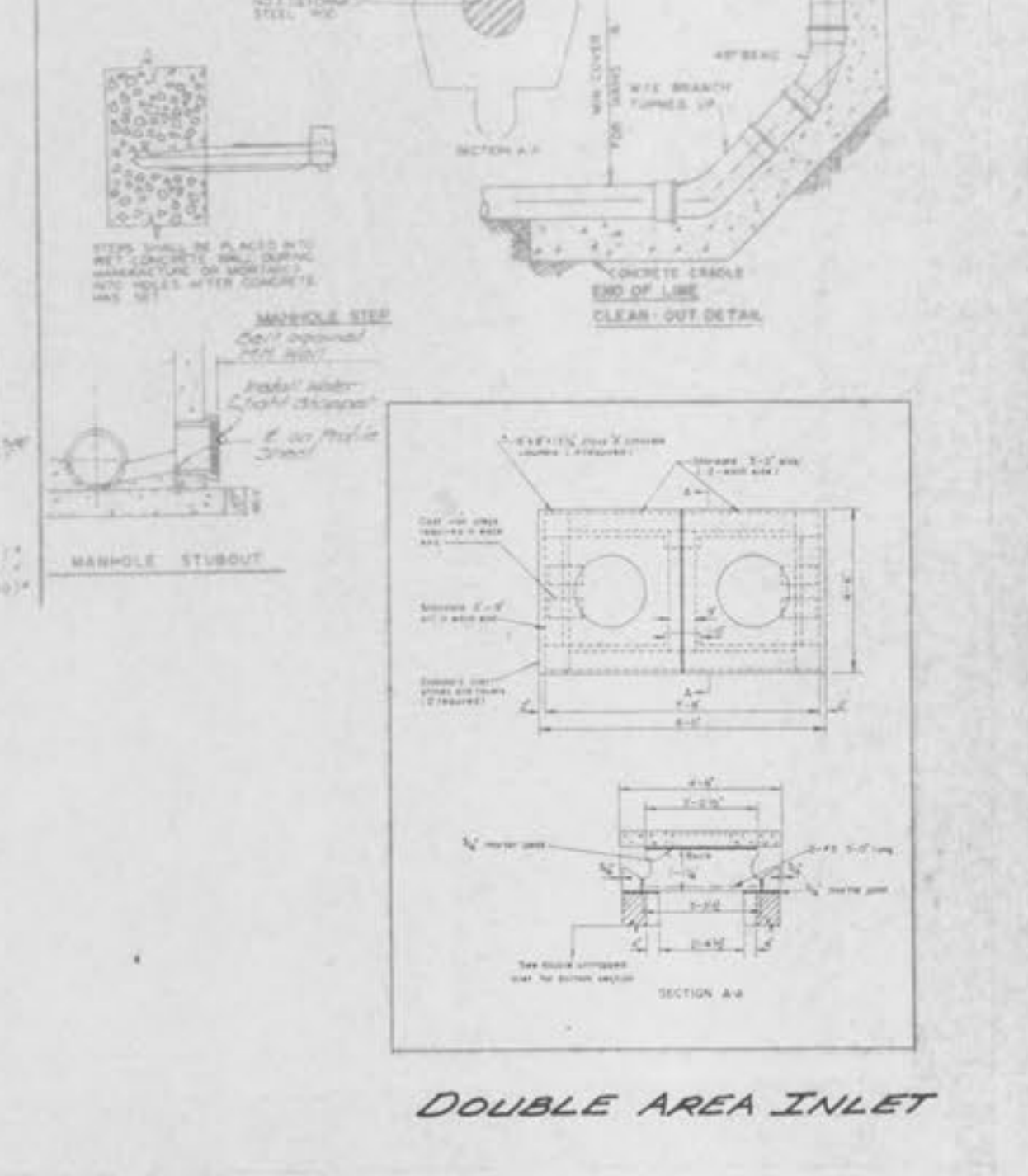


ALTERNATE  
 CONCRETE AREA INLET  
 OPEN 4 SIDES

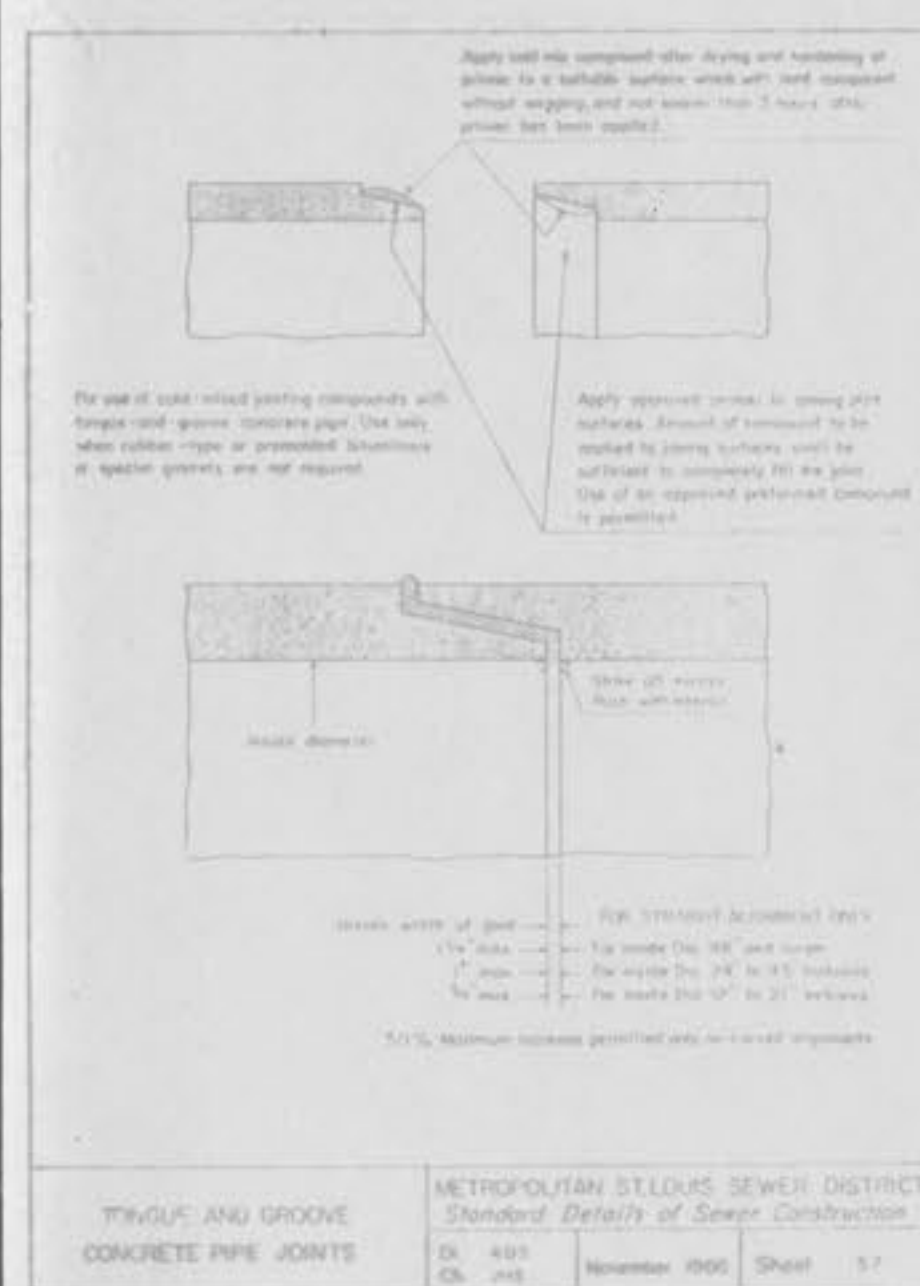
METROPOLITAN ST. LOUIS SEWER DISTRICT  
 Standard Details of Sewer Construction  
 D. 406  
 O. 428  
 April 1979 Sheet 24



METROPOLITAN ST. LOUIS SEWER DISTRICT  
 Standard Details of Sewer Construction  
 D. 407  
 O. 429  
 April 1979 Sheet 25

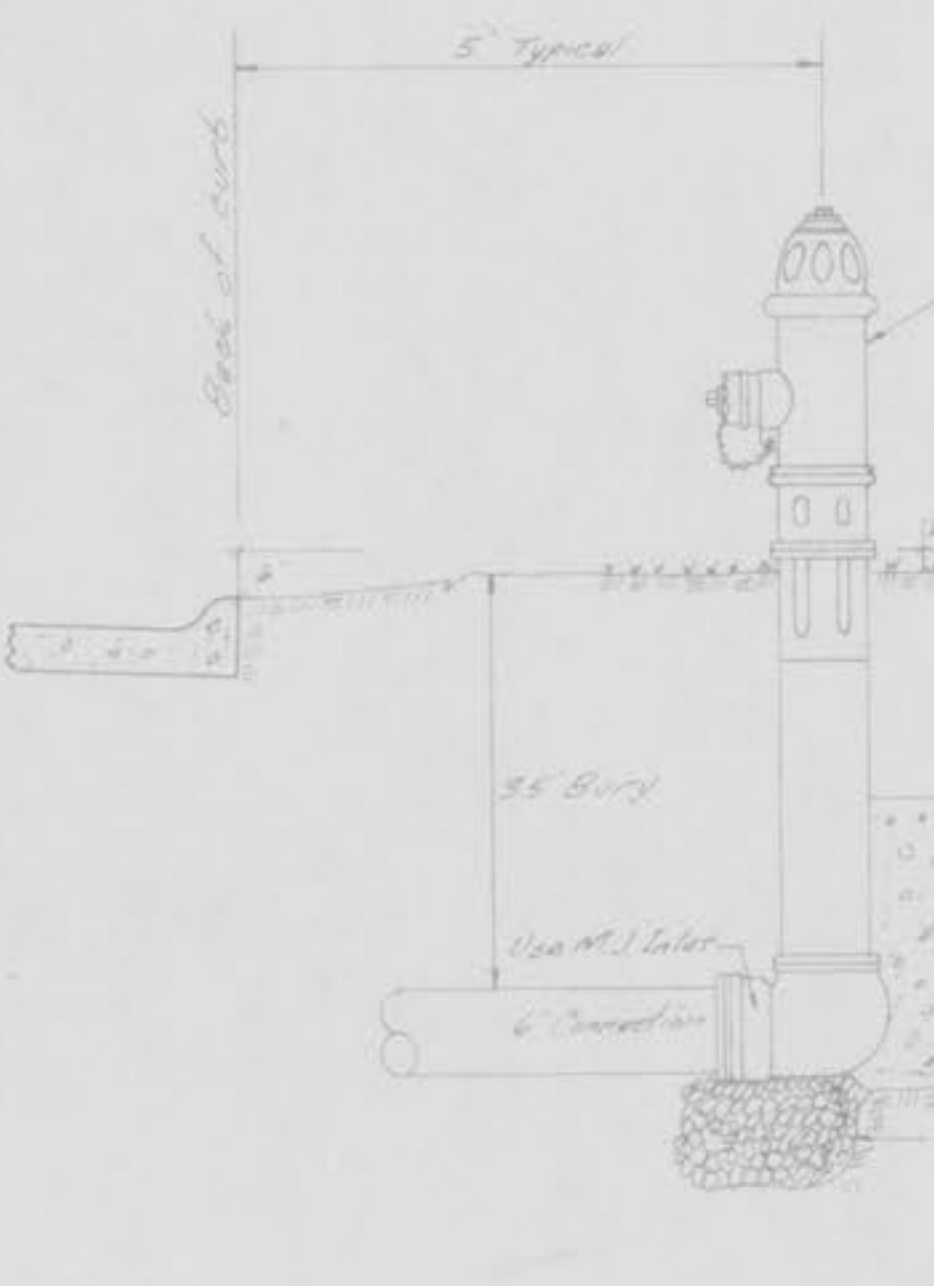


METROPOLITAN ST. LOUIS SEWER DISTRICT  
 Standard Details of Sewer Construction  
 D. 408  
 O. 430  
 April 1979 Sheet 26



TROUGH AND GROOVE  
 CONCRETE PIPE JOINTS

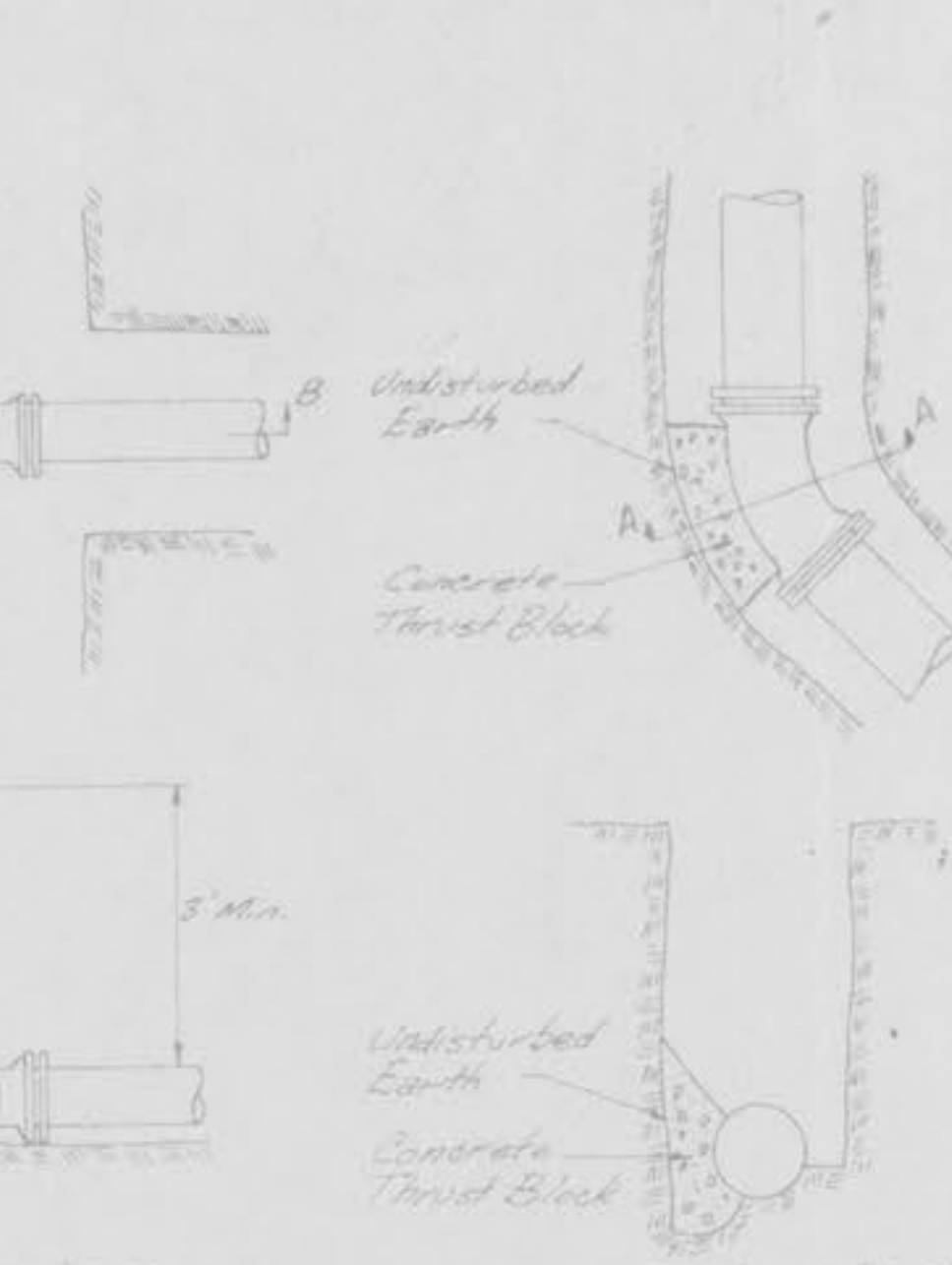
METROPOLITAN ST. LOUIS SEWER DISTRICT  
 Standard Details of Sewer Construction  
 D. 409  
 O. 431  
 November 1960 Sheet 17



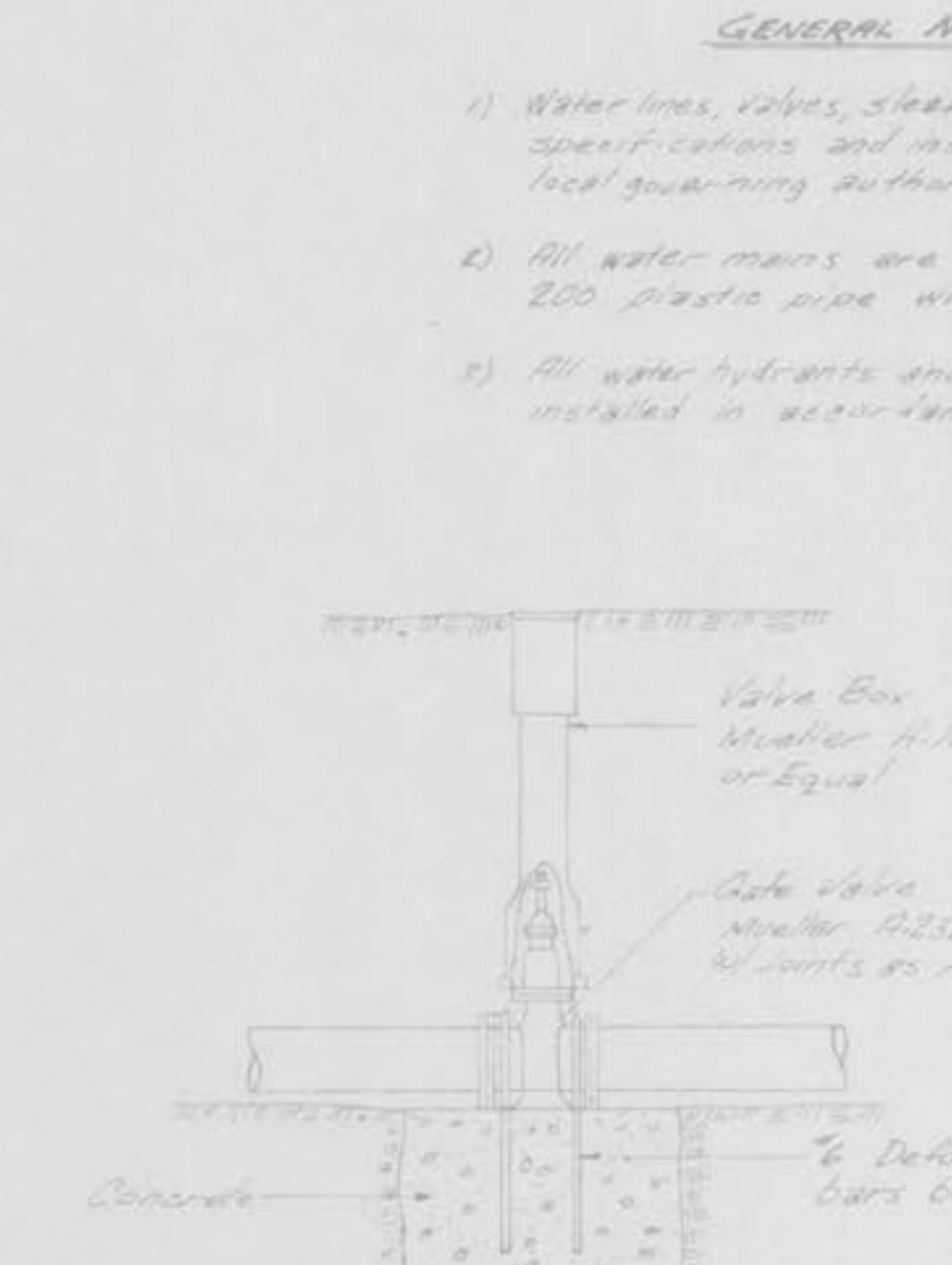
FIRE HYDRANT  
 N.T.S.



TEE  
 N.T.S.



45° BEND  
 N.T.S.



GATE VALVE  
 N.T.S.

GENERAL NOTES-WATER

- Water lines, valves, sleeves, meters, etc. shall meet all specifications and installation requirements of the local governing authority.
- All water mains are to be 120 SDR-26 PVC class 200 plastic pipe with cast iron fittings and brass valves.
- All water hydrants and valves shall be cast iron and installed in accordance with plans and details.

Man Size	Thrustblock Bearing Dimensions against Under Thrust Block
4"	5 1/2" x 5 1/2" x 5 1/2"
6"	6 1/2" x 6 1/2" x 6 1/2"
8"	8 1/2" x 8 1/2" x 8 1/2"

THRUSTBLOCK SCHEDULE



THRUSTBLOCK SCHEDULE