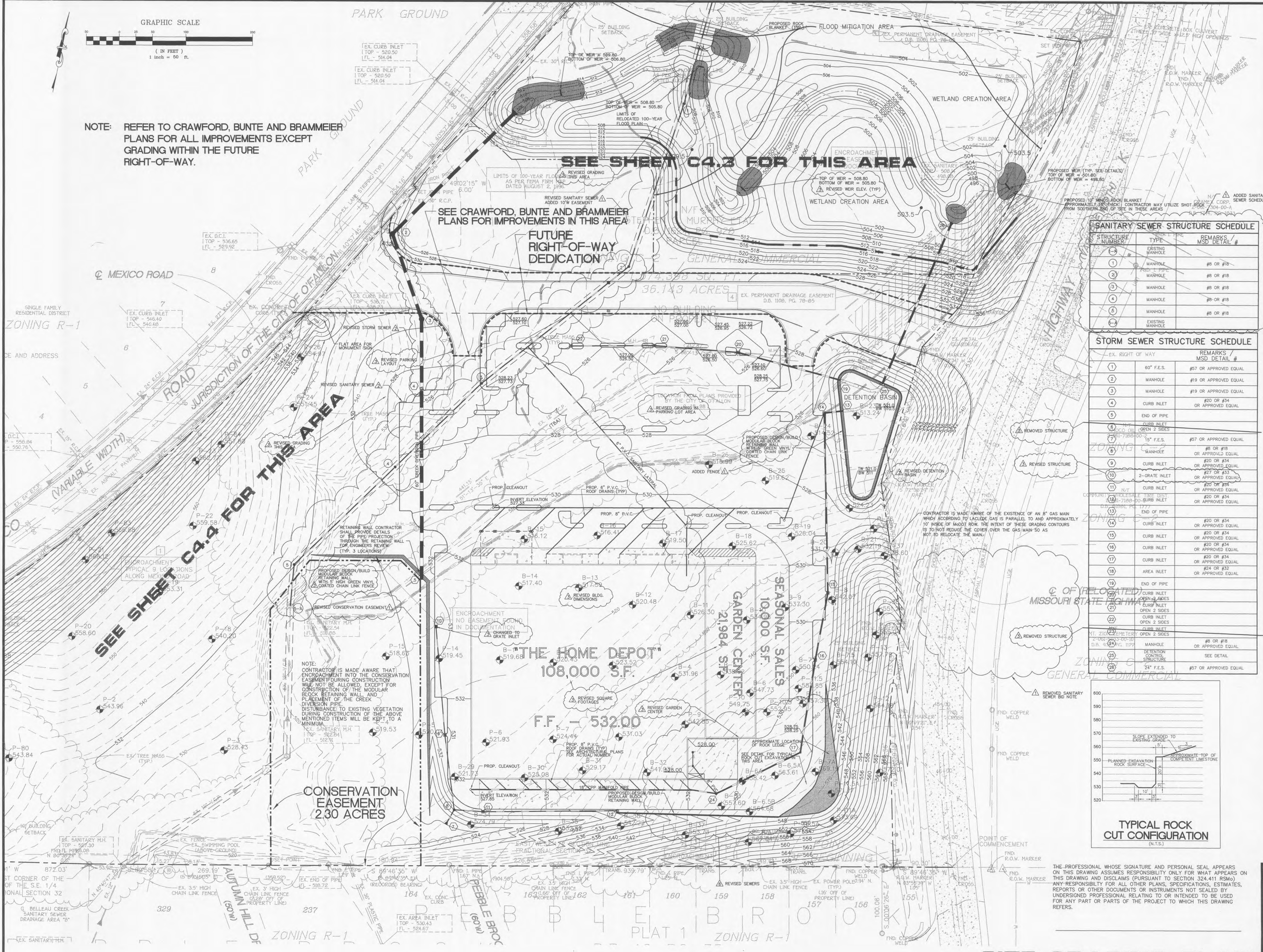


NOTE: REFER TO CRAWFORD, BUNTE AND BRAMMEIER PLANS FOR ALL IMPROVEMENTS EXCEPT GRADING WITHIN THE FUTURE RIGHT-OF-WAY.



SEE SHEET C4.3 FOR THIS AREA

SEE CRAWFORD, BUNTE AND BRAMMEIER PLANS FOR IMPROVEMENTS IN THIS AREA

FUTURE RIGHT-OF-WAY DEDICATION

SEE SHEET C4.4 FOR THIS AREA

NOTE: CONTRACTOR IS MADE AWARE THAT ENCROACHMENT INTO THE CONSERVATION EASEMENT DURING CONSTRUCTION WILL NOT BE ALLOWED, EXCEPT FOR CONSTRUCTION OF THE MODULAR BLOCK RETAINING WALL AND PLACEMENT OF THE CREEK DIVERSION PIPE. DISTURBANCE TO EXISTING VEGETATION DURING CONSTRUCTION OF THE ABOVE MENTIONED ITEMS WILL BE KEPT TO A MINIMUM.

THE HOME DEPOT
108,000 S.F.

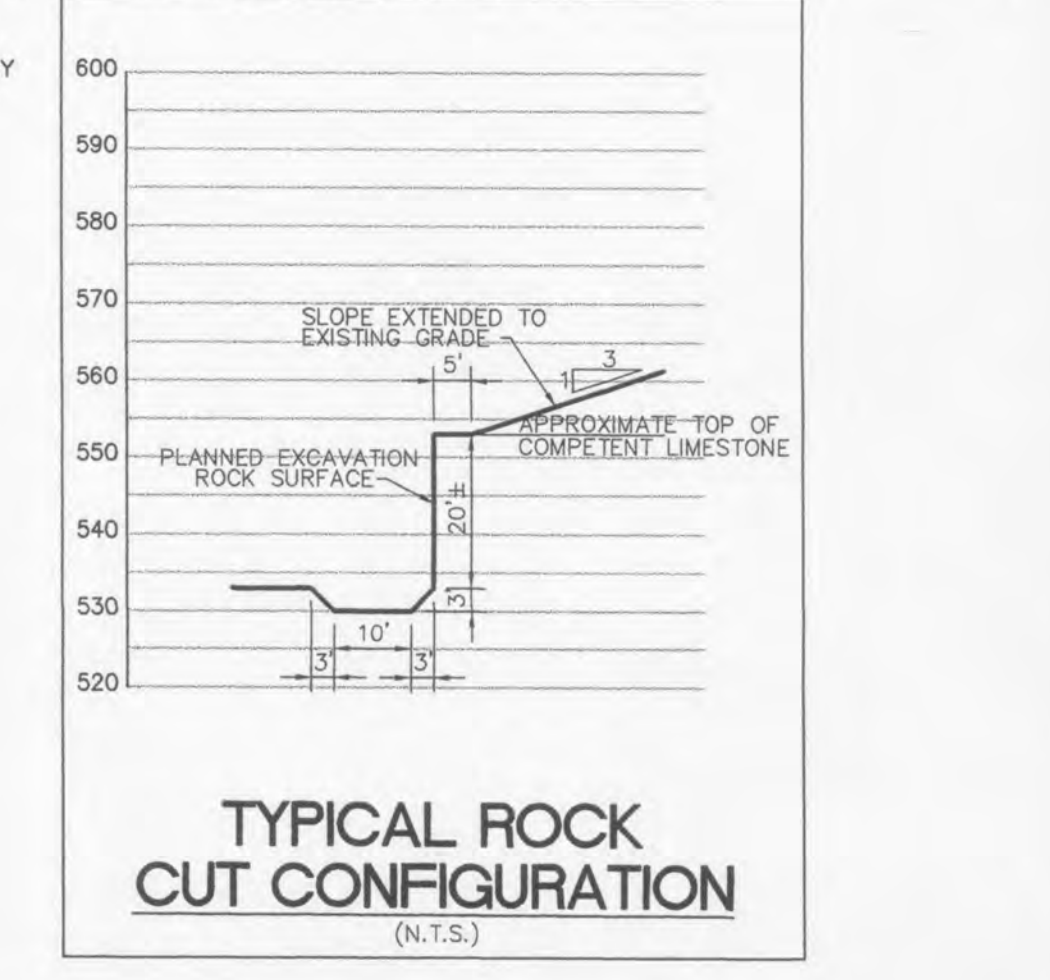
GARDEN CENTER
21,984 S.F.

SEASONAL SALES
10,000 S.F.

F.F. - 532.00

STRUCTURE NUMBER	TYPE	REMARKS / MSD DETAIL #
1	MANHOLE	#8 OR #18
2	MANHOLE	#8 OR #18
3	MANHOLE	#8 OR #18
4	MANHOLE	#8 OR #18
5	MANHOLE	#8 OR #18
6	EXISTING MANHOLE	

EX. RIGHT OF WAY	REMARKS / MSD DETAIL #
1	60" F.E.S. #57 OR APPROVED EQUAL
2	MANHOLE #19 OR APPROVED EQUAL
3	MANHOLE #19 OR APPROVED EQUAL
4	CURB INLET #20 OR #34 OR APPROVED EQUAL
5	END OF PIPE
6	CURB INLET OPEN 2 SIDES
7	15" F.E.S. #57 OR APPROVED EQUAL
8	MANHOLE #8 OR #18 OR APPROVED EQUAL
9	CURB INLET #20 OR #34 OR APPROVED EQUAL
10	2-GRATE INLET #27 OR #33 OR APPROVED EQUAL
11	N/F CURB INLET OR APPROVED EQUAL
12	WHOLESALE TREE DIST. #20 OR #34 OR APPROVED EQUAL
13	END OF PIPE
14	CURB INLET #20 OR #34 OR APPROVED EQUAL
15	CURB INLET #20 OR #34 OR APPROVED EQUAL
16	CURB INLET #20 OR #34 OR APPROVED EQUAL
17	CURB INLET #20 OR #34 OR APPROVED EQUAL
18	AREA INLET #24 OR #32 OR APPROVED EQUAL
19	END OF PIPE
20	CURB INLET OPEN 2 SIDES
21	CURB INLET OPEN 2 SIDES
22	CURB INLET OPEN 2 SIDES
23	CURB INLET OPEN 2 SIDES
24	MANHOLE #8 OR #18 OR APPROVED EQUAL
25	RETENTION CONTROL STRUCTURE SEE DETAIL
26	24" F.E.S. #57 OR APPROVED EQUAL



THE PROFESSIONAL WHOSE SIGNATURE AND PERSONAL SEAL APPEARS ON THIS DRAWING ASSUMES RESPONSIBILITY ONLY FOR WHAT APPEARS ON THIS DRAWING AND DISCLAIMS (PURSUANT TO SECTION 324.411 RSMO) ANY RESPONSIBILITY FOR ALL OTHER PLANS, SPECIFICATIONS, ESTIMATES, REPORTS OR OTHER DOCUMENTS OR INSTRUMENTS NOT SEALED BY UNDERSIGNED PROFESSIONAL RELATING TO OR INTENDED TO BE USED FOR ANY PART OR PARTS OF THE PROJECT TO WHICH THIS DRAWING REFERS.

DATE	REVISIONS
07/27/99	A REVISION
05/09/99	A REVISION
05/07/99	A REVISION
06/07/99	A REVISION
09/07/99	A REVISION

THE HOME DEPOT
SOUTHWEST DIVISION
2800 FOREST LANE
DALLAS, TX. 75234

JAMES B. BECKER
CONSULTING ENGINEERS

ST. LOUIS, MISSOURI 63123
9850 GRANDES ROADS
SUITE A

THE HOME DEPOT
O'FALLON, MISSOURI

ISSUE DATE:	06/20/99
DRAWN BY:	TMM
DATE:	10/19/98
CHECKED BY:	MLO
DATE:	10/19/98
SCALE:	1" = 50'
JOB NUMBER:	4625
SHEET NUMBER:	C4.2

SITE GRADING PLAN