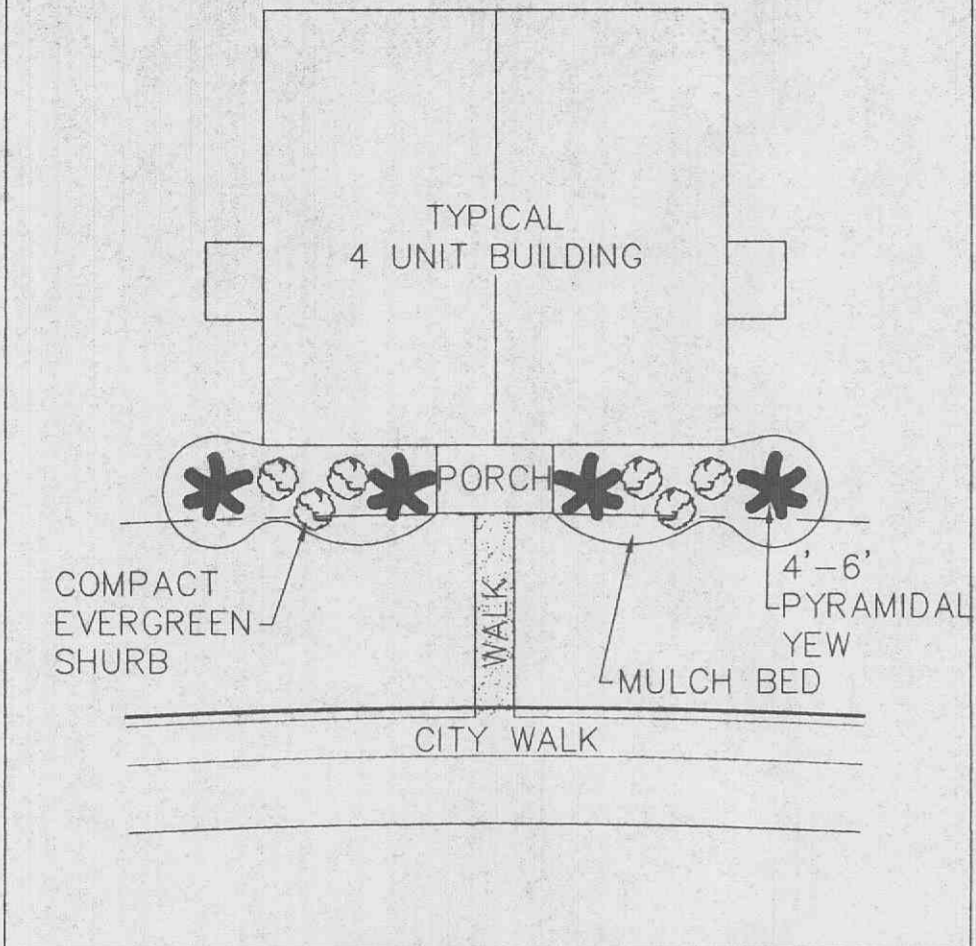


NOTE:
 Planting shall be similar on both sides of the porch but species of plants shall be varied from building to building to provide variety.



TYPICAL LANDSCAPE PACKAGE PER BUILDING

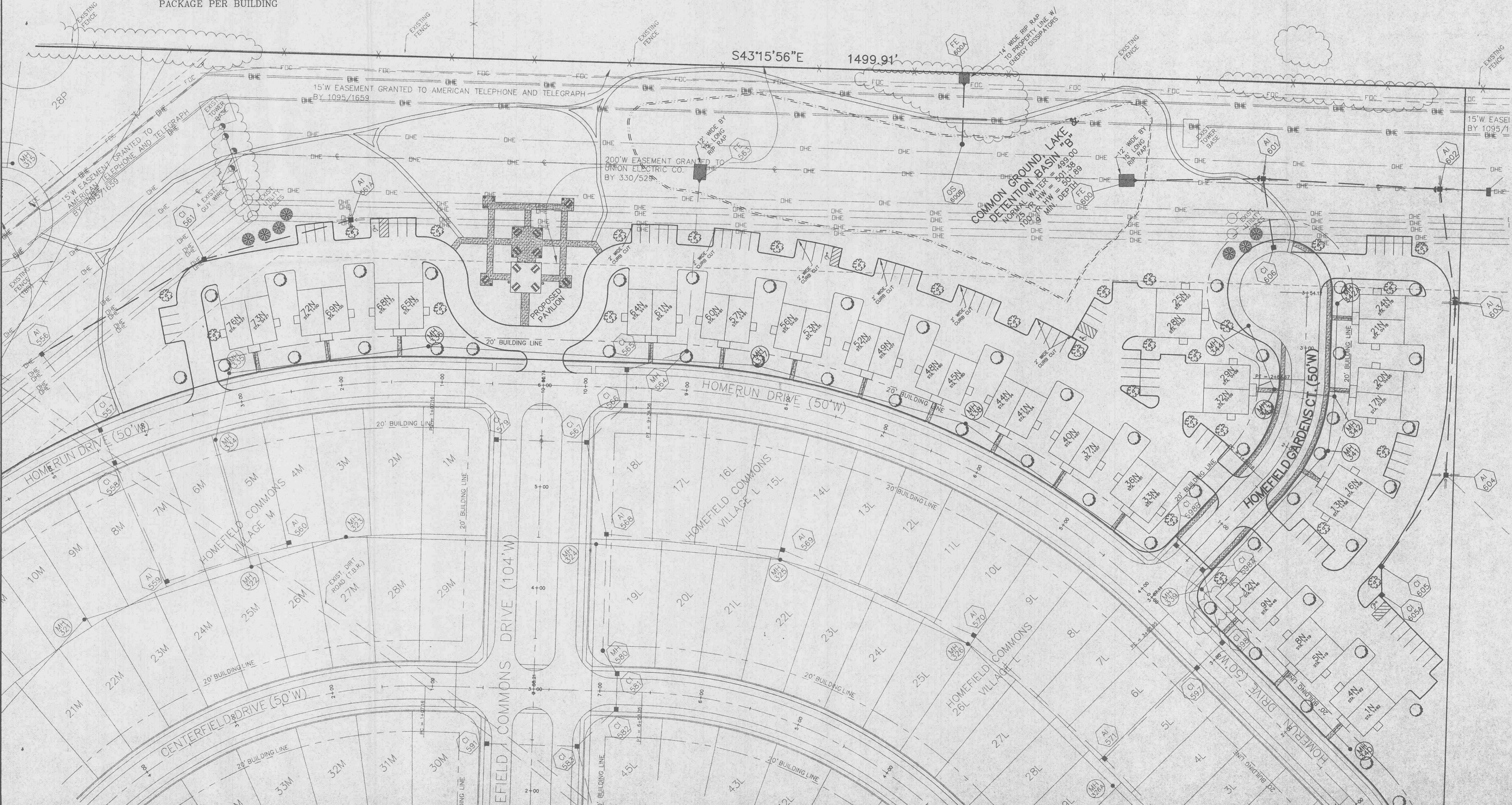
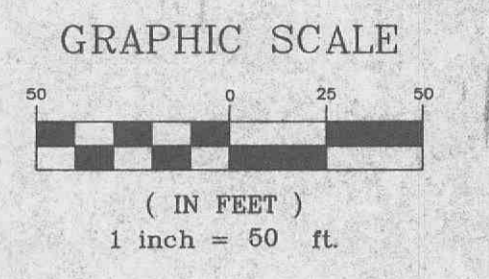
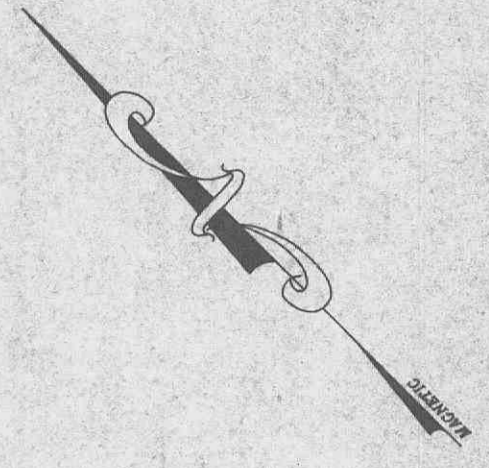
LANDSCAPE LEGEND

Common Name	
	QTY. 7 4' to 6' Pines
	QTY. 29 1 1/2" Cal. Flowering Ornamentals
	QTY. 51 2" Cal. Hardwood Shade Tree

LANDSCAPING AS DEPICTED IS SUBJECT TO FINAL DESIGN BY A QUALIFIED LANDSCAPE DESIGNER

LANDSCAPE REQUIREMENTS:
 2,250 L.F. OF STREET FRONTAGE
 2,250 L.F. / 50 L.F. = 45 STREET TREES REQUIRED
 76 MULTI-FAMILY UNITS PROPOSED
 76 UNITS X 1 TREE FOR EVERY TWO UNITS = 38 TREES
 TOTAL TREES REQUIRED = 45+38 = 83 TREES
 TOTAL TREES PROPOSED = 87 TREES

PROPERTY N/E
 ADOLPHUS BUSCH
 1544/1962



\\Baxsv\dl-dr\1ve\DWG\41000\PL\US\10001N-LANDSCAPE.dwg Mon Jun 12 15:55:03 2000 JML