

PROJECT TITLE

**Hubler**  
**AUTO PLAZA**  
 Sales & Service

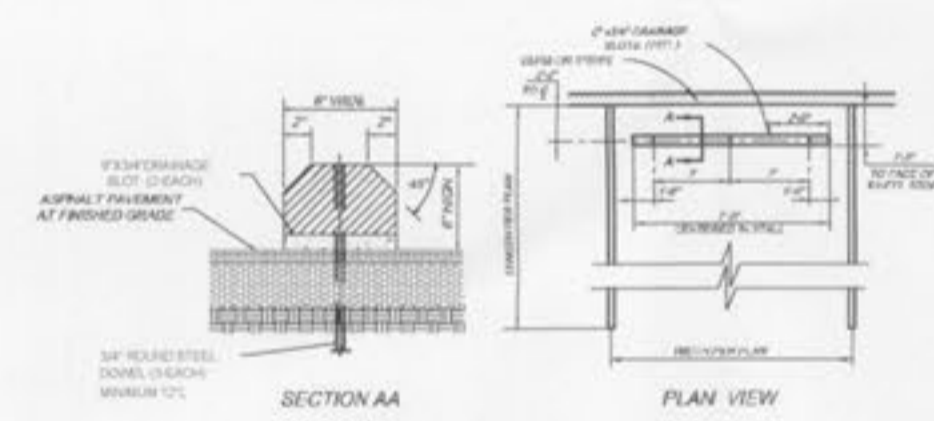
PREMIER CIVIL  
 ENGINEERING

Wentzville  
 1155 Wentzville Parkway Suite 103  
 Wentzville, MO 63385  
 Phone (636) 266-4666 Fax (636) 395-4022  
 Premier Civil Engineering  
 Missouri State Certificate of Authority #LC0061128

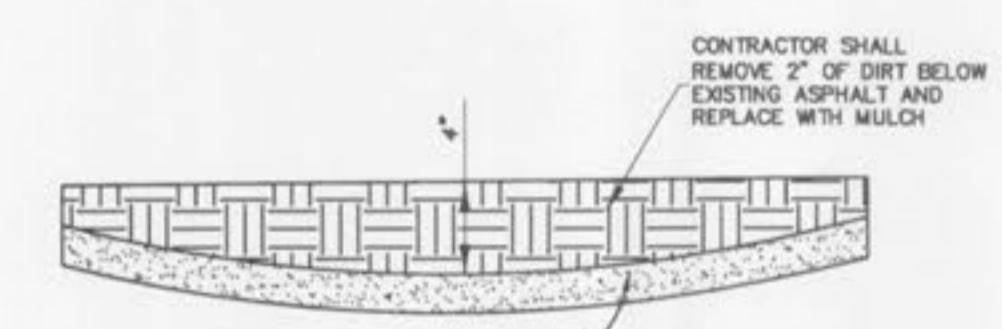
ENGINEERS AUTHENTICATION  
 The responsibility for professional engineering is hereby assumed by the engineer whose name and seal are on this drawing. The engineer's seal is a condition for all other engineering plans involved in this project and it is the engineer's responsibility to ensure that the seal is not used for any other project.



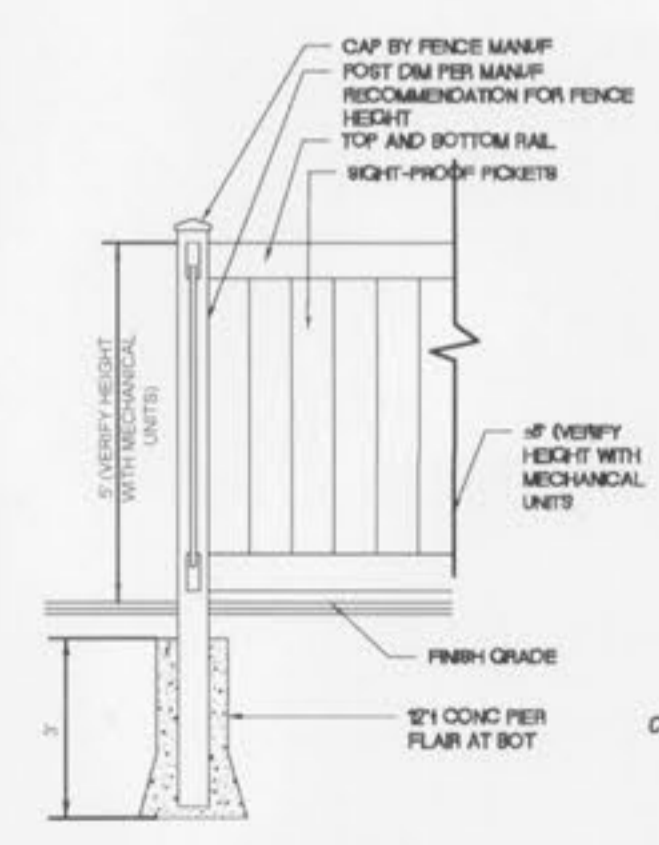
STEVE MARION P.E.  
 ENGINEER  
 PE26607195



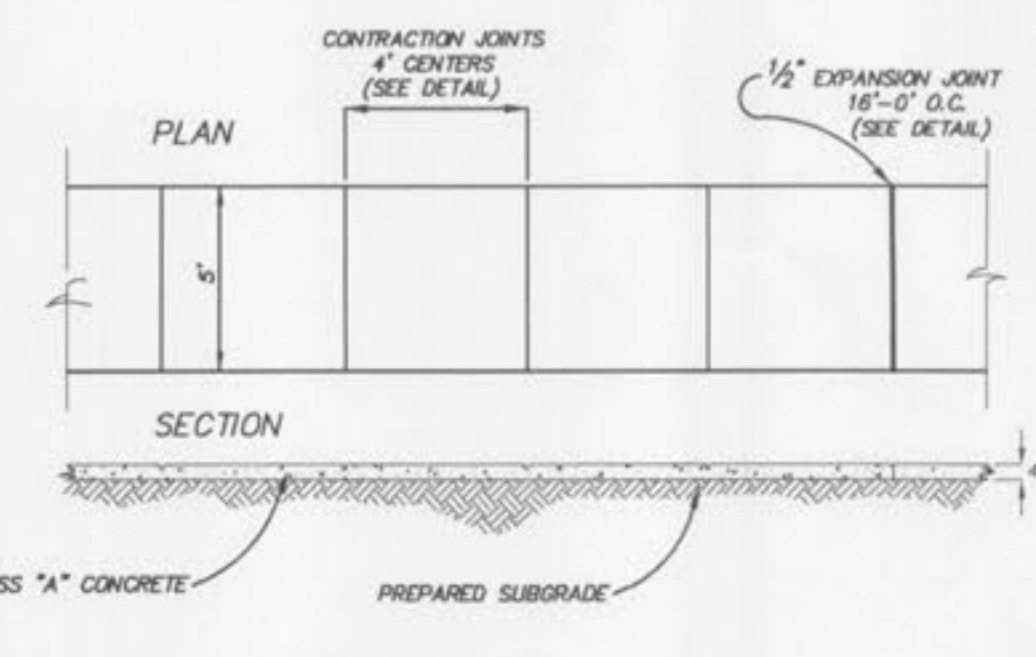
WHEEL STOP DETAIL  
 N.T.S.



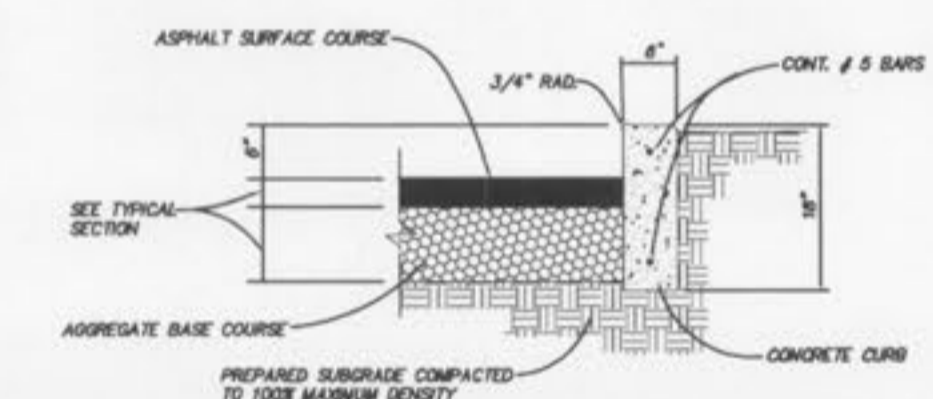
DEPRESSED ISLAND SECTION  
 N.T.S.



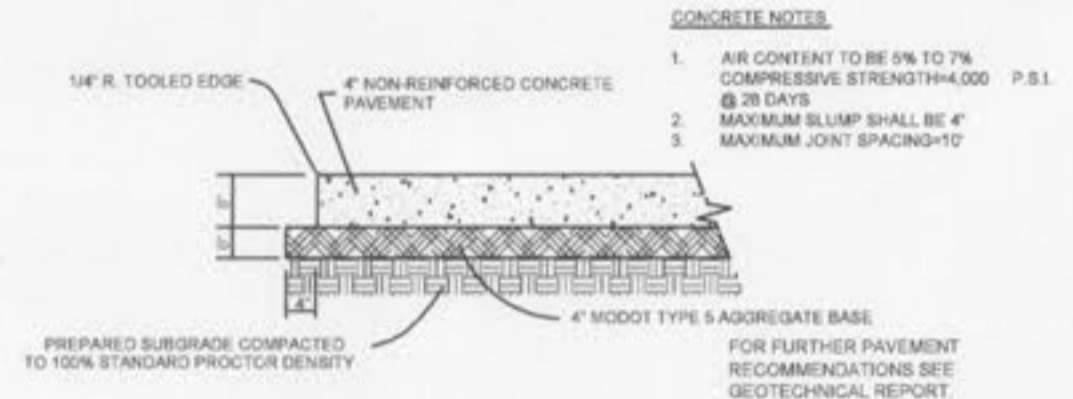
VINYL FENCE DETAIL  
 N.T.S.



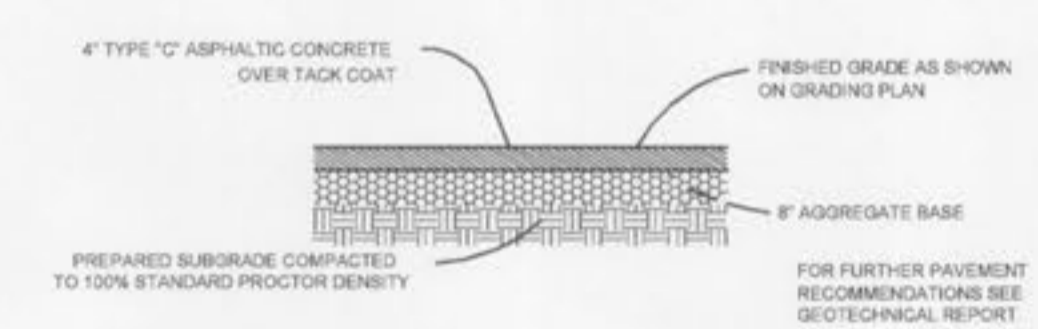
CONCRETE SIDEWALK DETAIL  
 N.T.S.



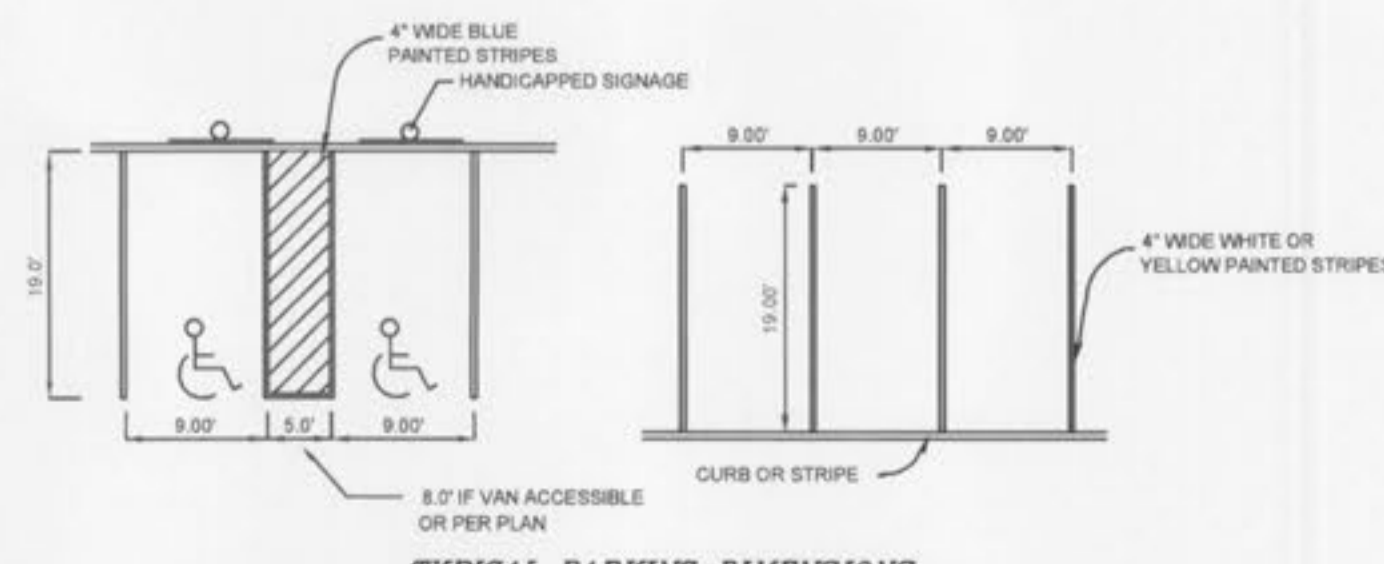
6" VERTICAL CONCRETE CURB



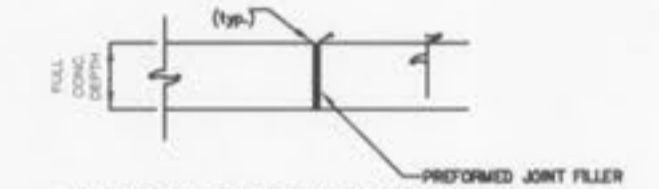
CONCRETE SIDEWALK PAVEMENT DETAIL



ASPHALT PAVEMENT DETAIL  
 N.T.S.



TYPICAL PARKING DIMENSIONS  
 N.T.S.



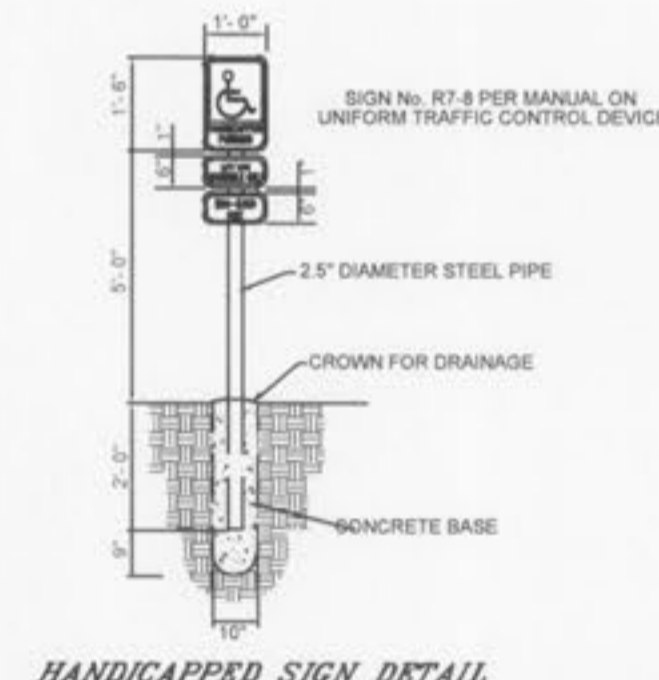
CURB AND SIDEWALK EXPANSION JOINT AT RT. & LG. POINTS OF ADJACENCY AND AT INTERVALS NOT EXCEEDING 40\"/>



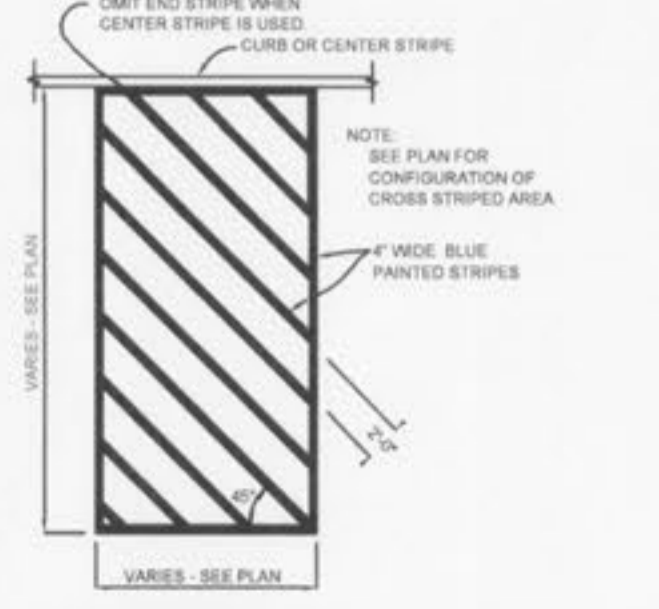
CURB AND SIDEWALK CONTRACTION JOINT AT INTERVALS NOT EXCEEDING 40\"/>



HANDICAPPED PARKING MARKING



HANDICAPPED SIGN DETAIL  
 N.T.S.



CROSS STRIPING DETAIL

Developer / Owner Information

RJH II ENTERPRISES LLC  
 661 KILLARY DOWNS  
 WELDON SPRING, MO 63304  
 CONTACT RANDY HUBLER  
 CELL: 314-220-7041  
 HUBLER AUTO PLAZA

Site Specific Details

P+Z No. 22-11  
 APPROVED 10.06.11  
 City No.

Sheet Number:

6