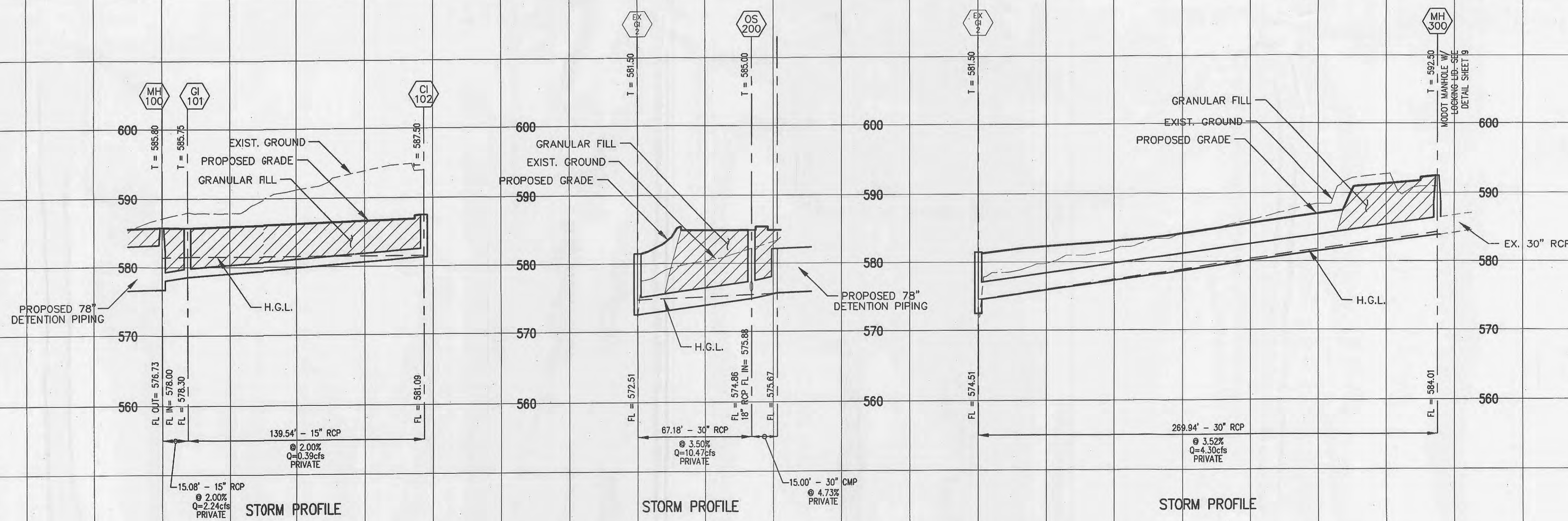
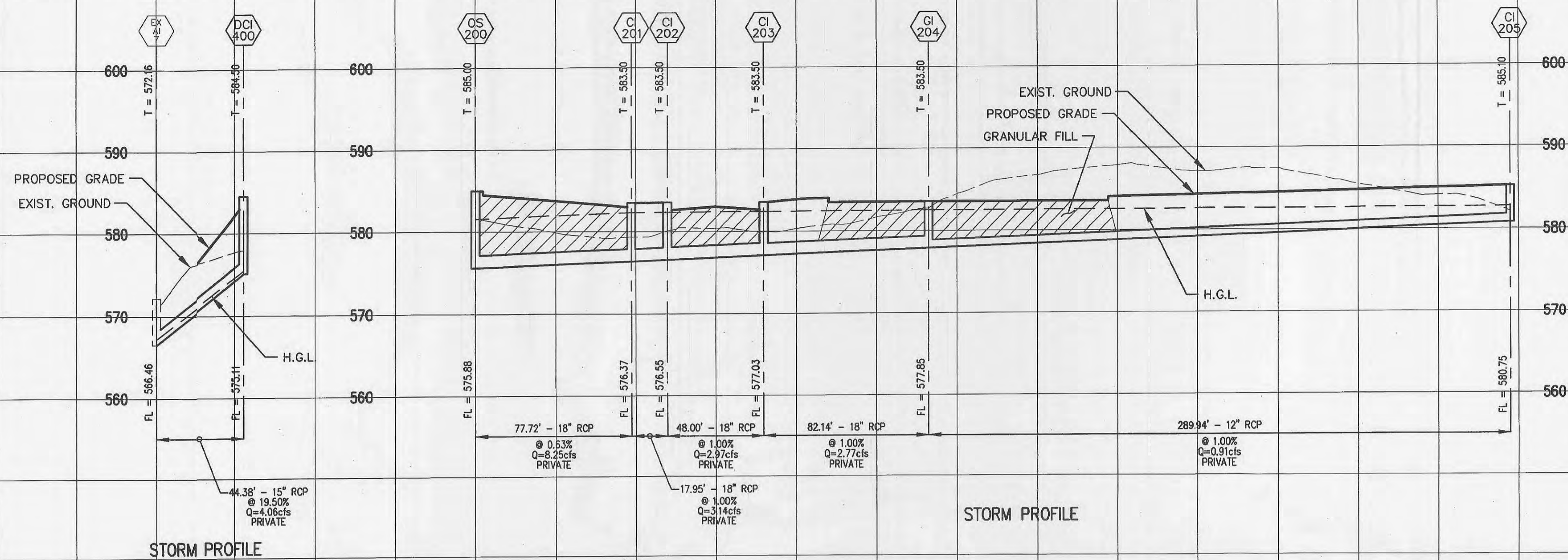


**HUTCHINGS FARM PLAZA
PROFILE SHEET**

ST. CHARLES COUNTY, MISSOURI

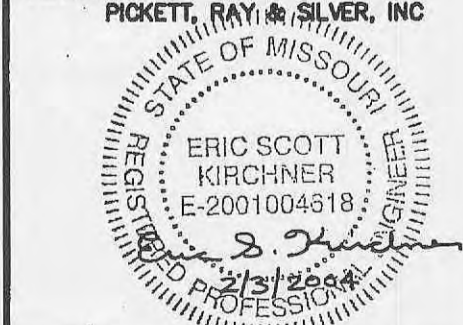
8 PARKLAND AVE.
GLENDALE, MO 63122

Prepared For:
Hutchings Farm Plaza LLC



REVISIONS	NO.	DATE	ST. CHARLES COUNTY COMMENTS
	1	12.16.03	ST. CHARLES COUNTY COMMENTS
	2	1.14.04	CITY OF FALLON COMMENTS
	3	1.26.04	ST. CHARLES COUNTY COMMENTS
	4	1.27.04	ST. CHARLES COUNTY COMMENTS

ENGINEERS AUTHENTICATION
 The responsibility for professional engineering liability on this project is hereby limited to the set of plans authenticated by the seal, signature, and date hereunder attached. Responsibility is disclaimed for all other engineering plans involved in this project and specifically excludes revisions after this date unless reauthenticated.



DRAWN J.M. WINTERS	DATE 10.23.03
CHECKED E.S. KIRCHNER	DATE 10.23.03
PROJECT # 95234.ARIM.OOC	
TASK # 1	FIELD BOOK

VERT. - 1" = 10'
HOR. - 1" = 40'

\\server\proj\95234\BHV\95234\DES.dwg, 2/2/2004 3:42:50 PM, JUSTIN W.