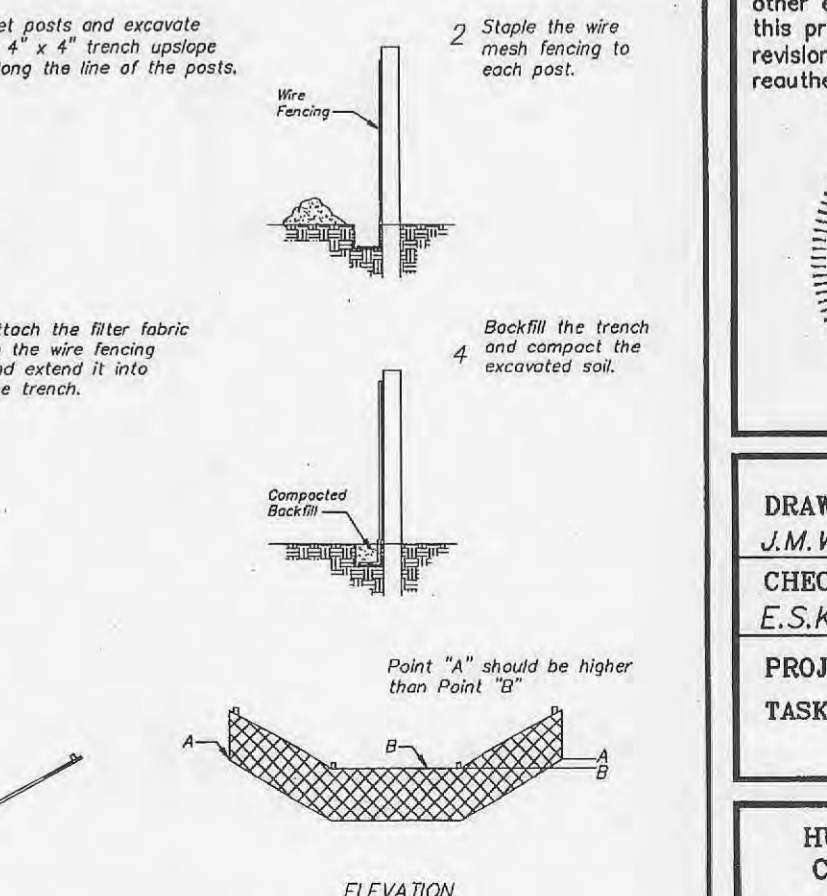
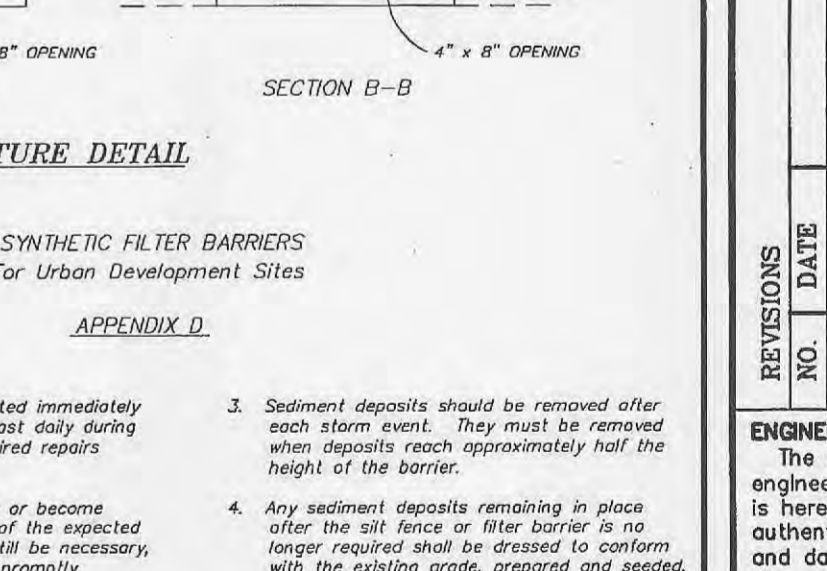
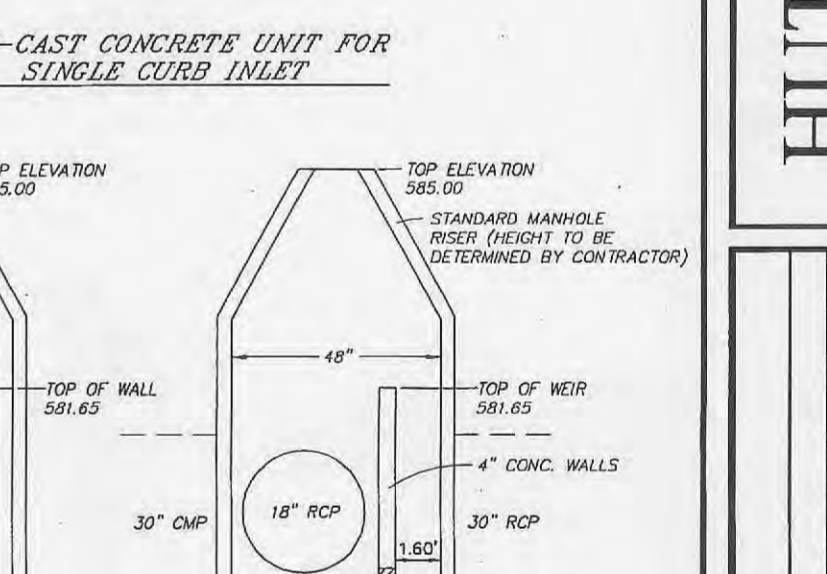
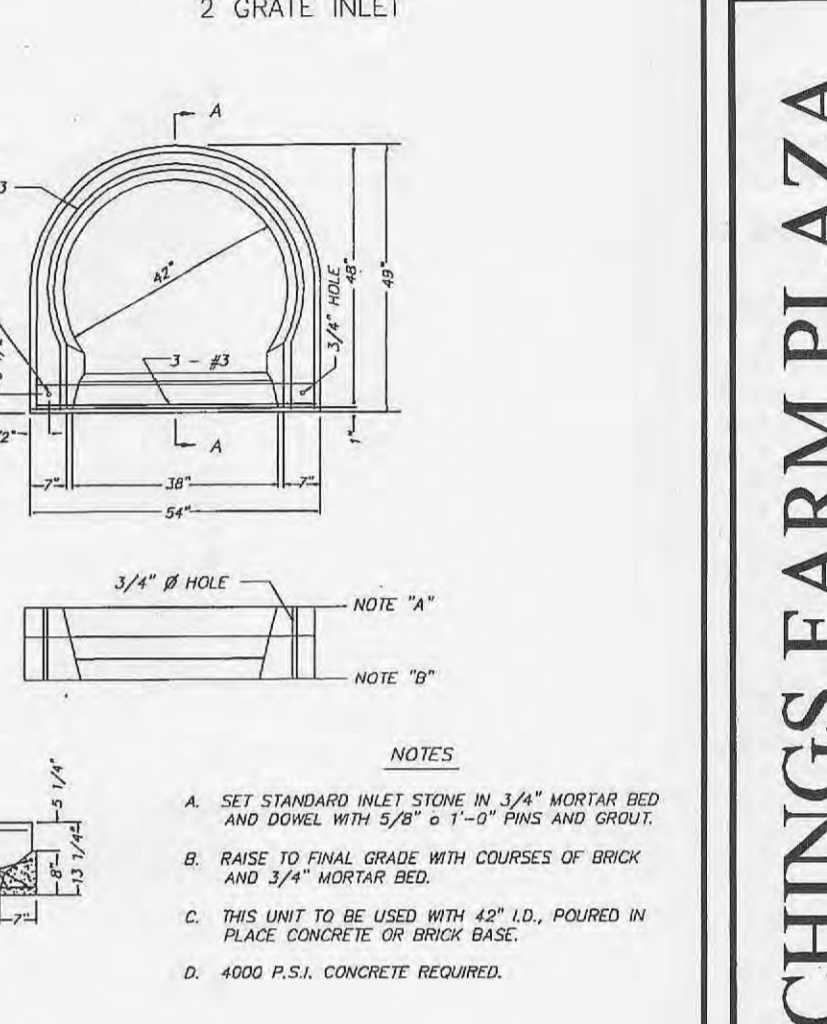
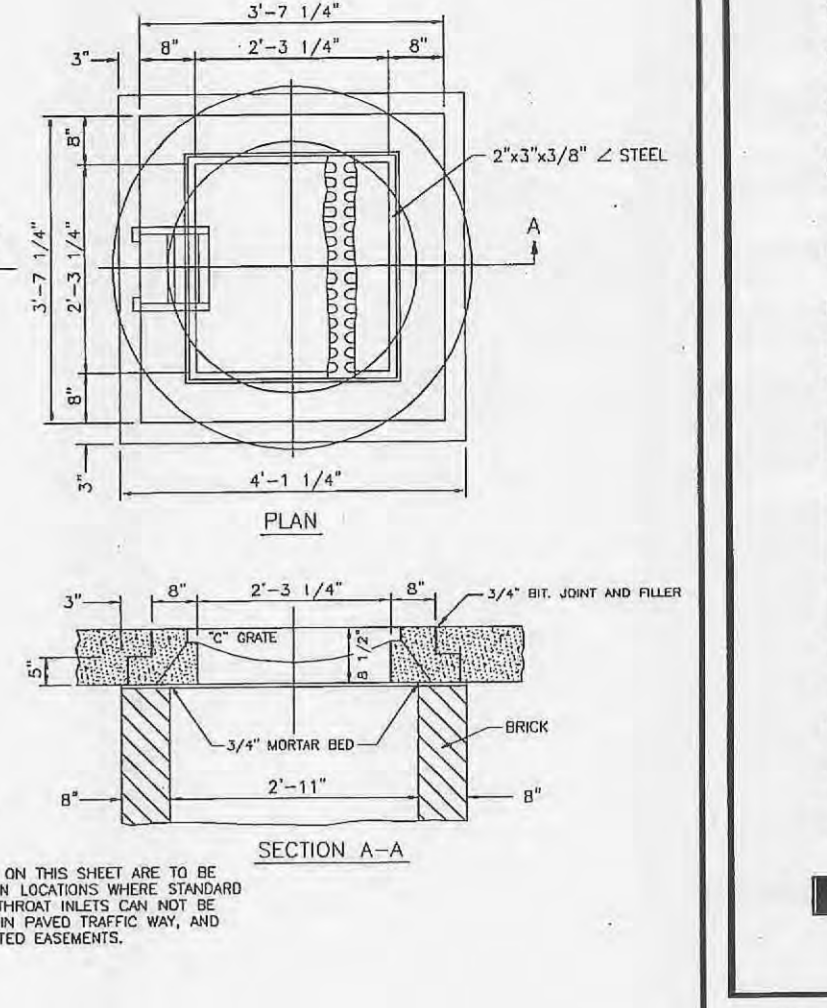
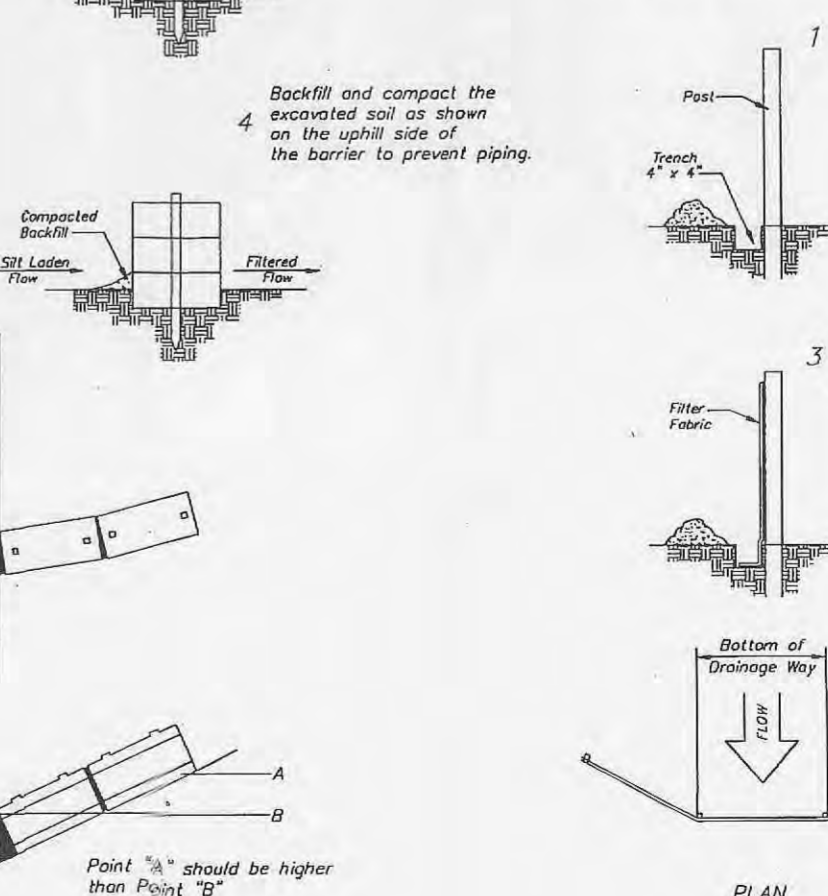
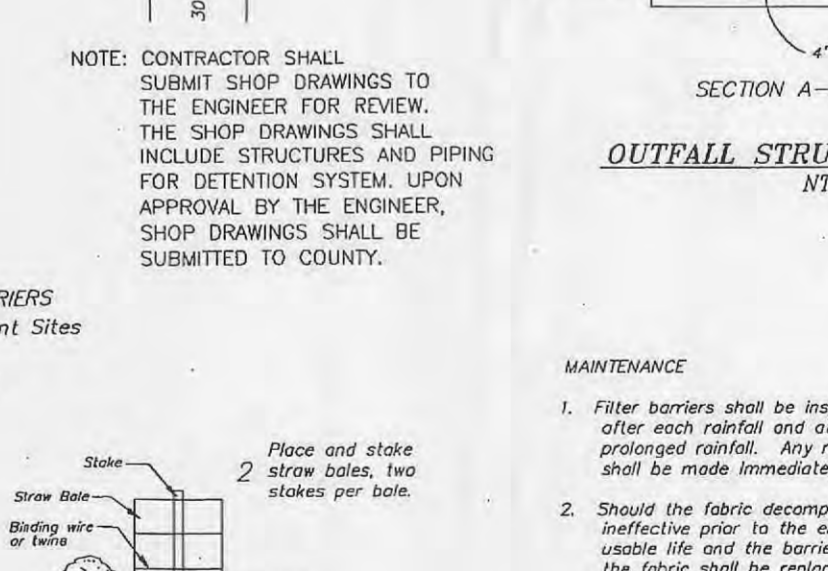
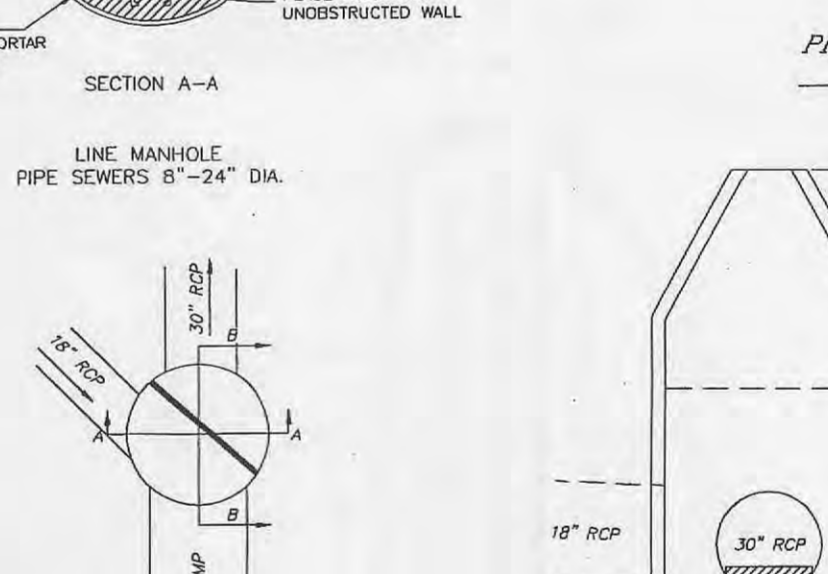
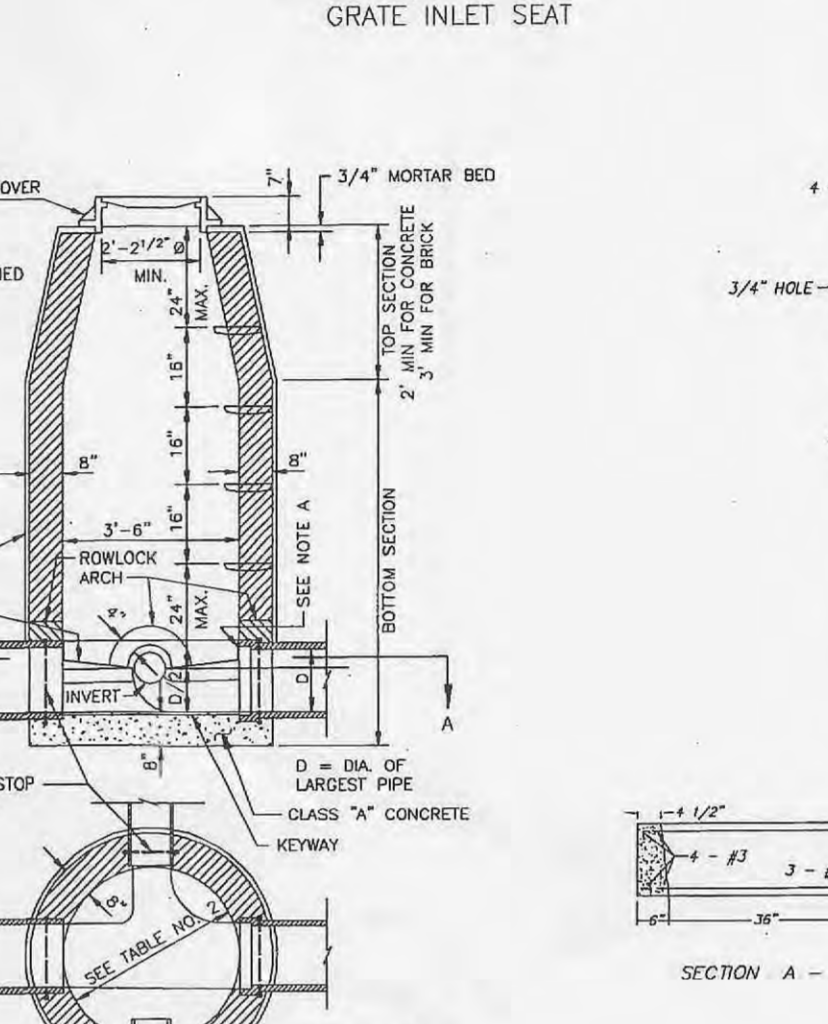
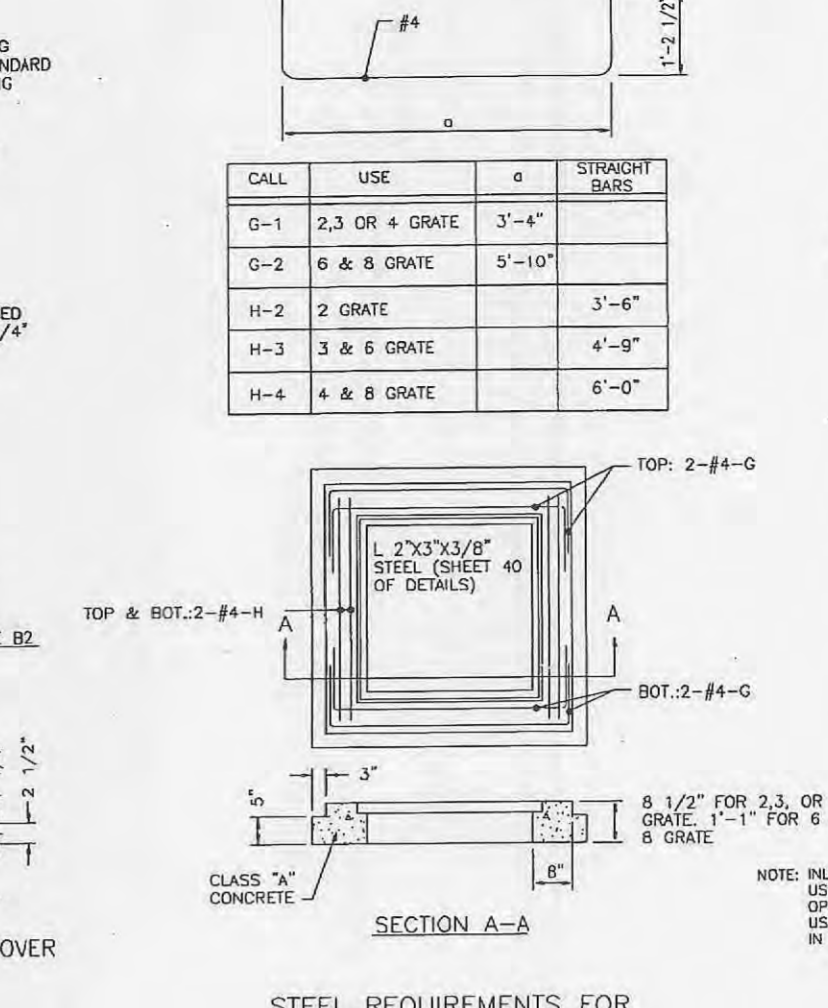
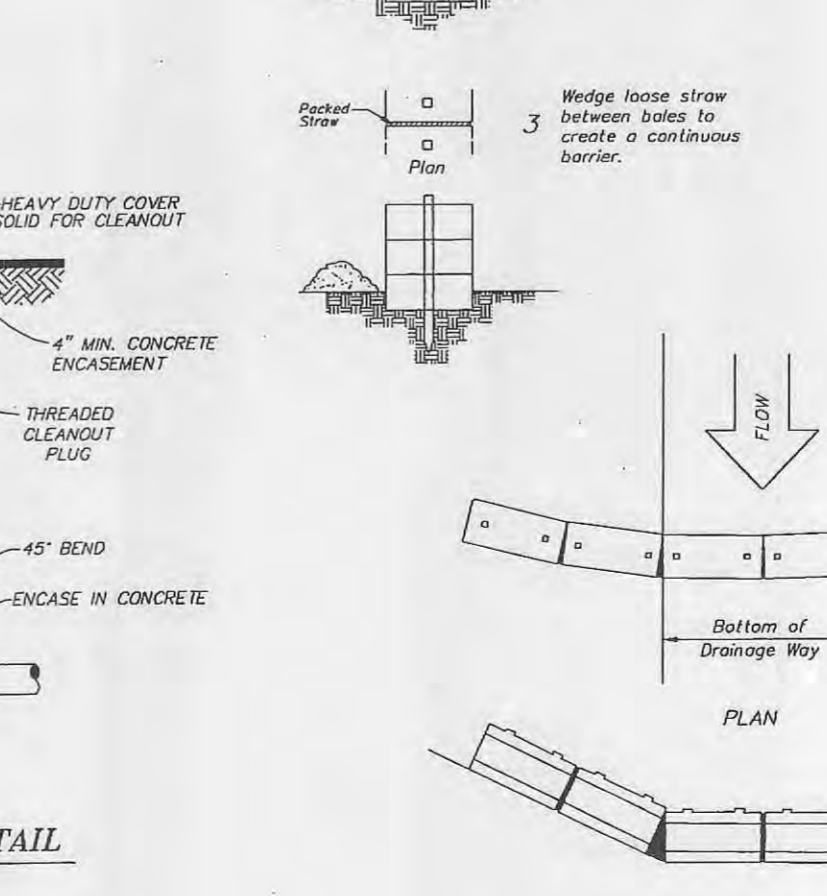
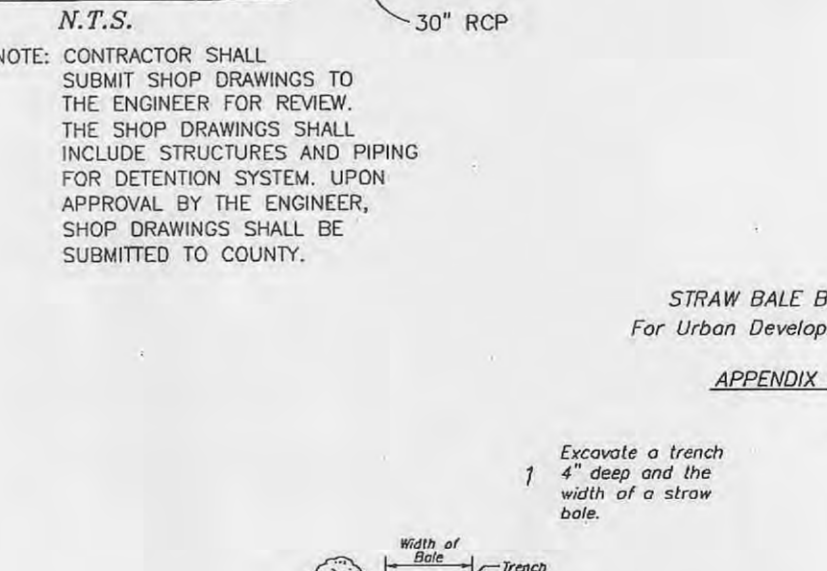
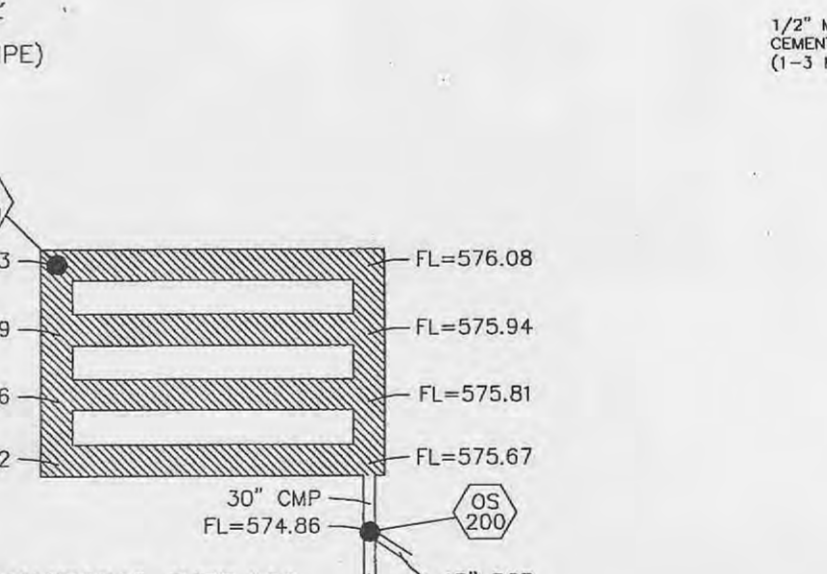
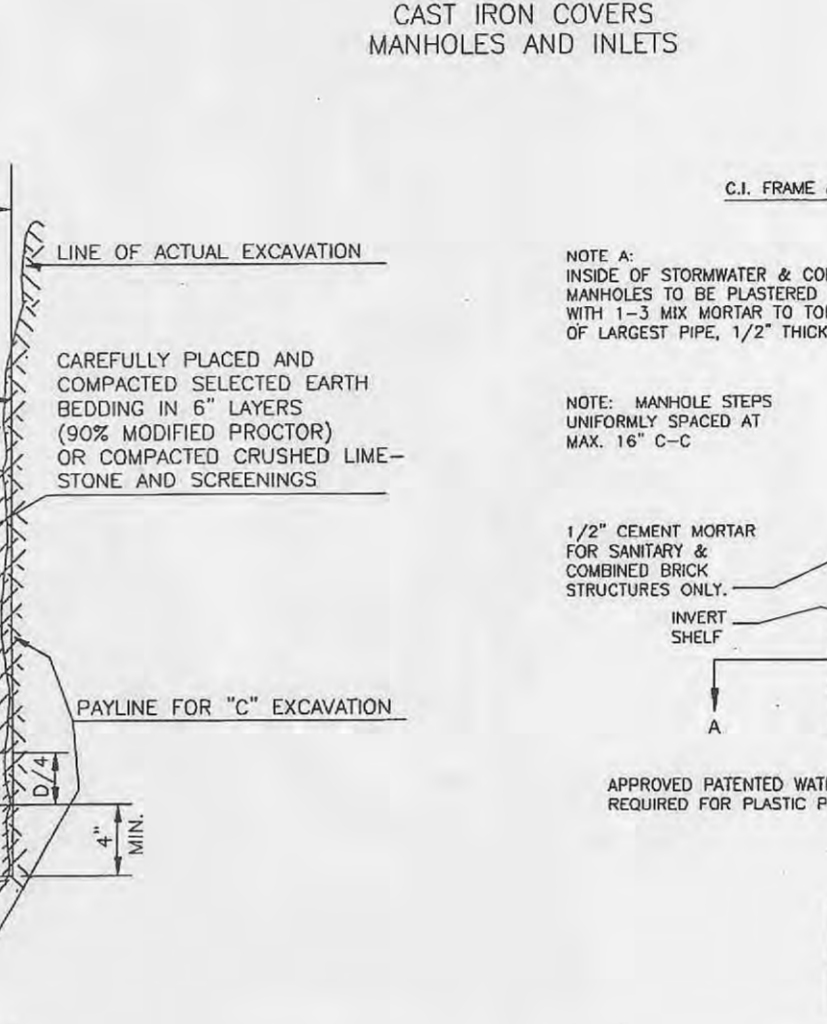
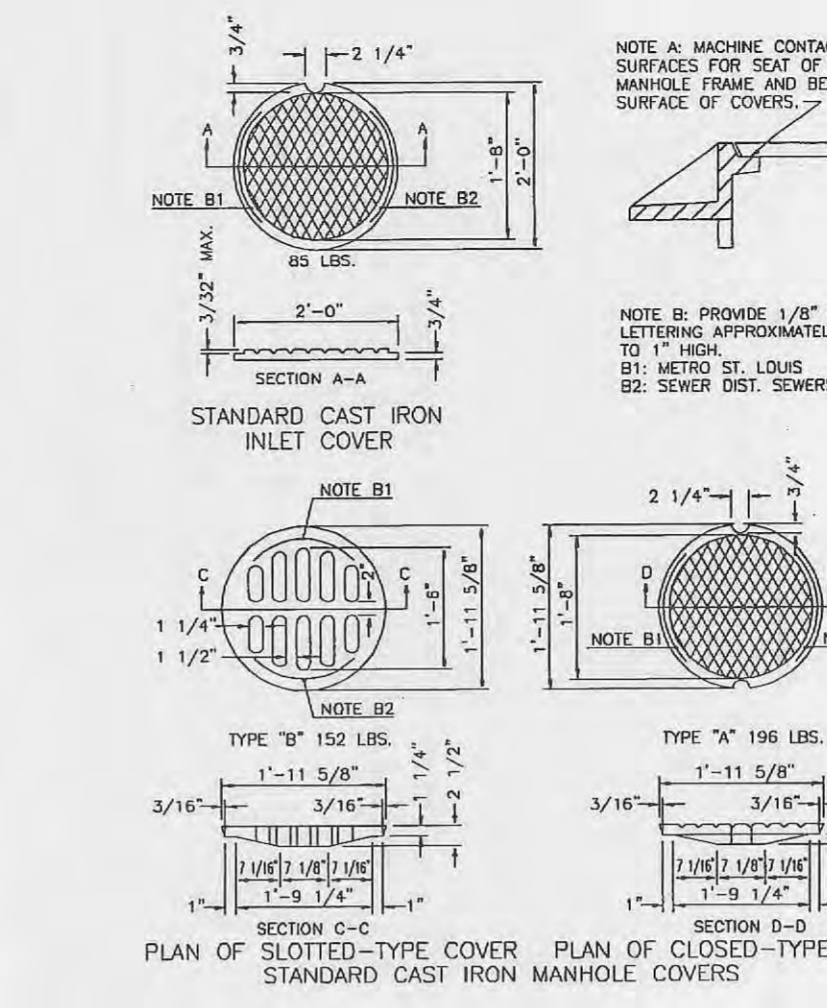
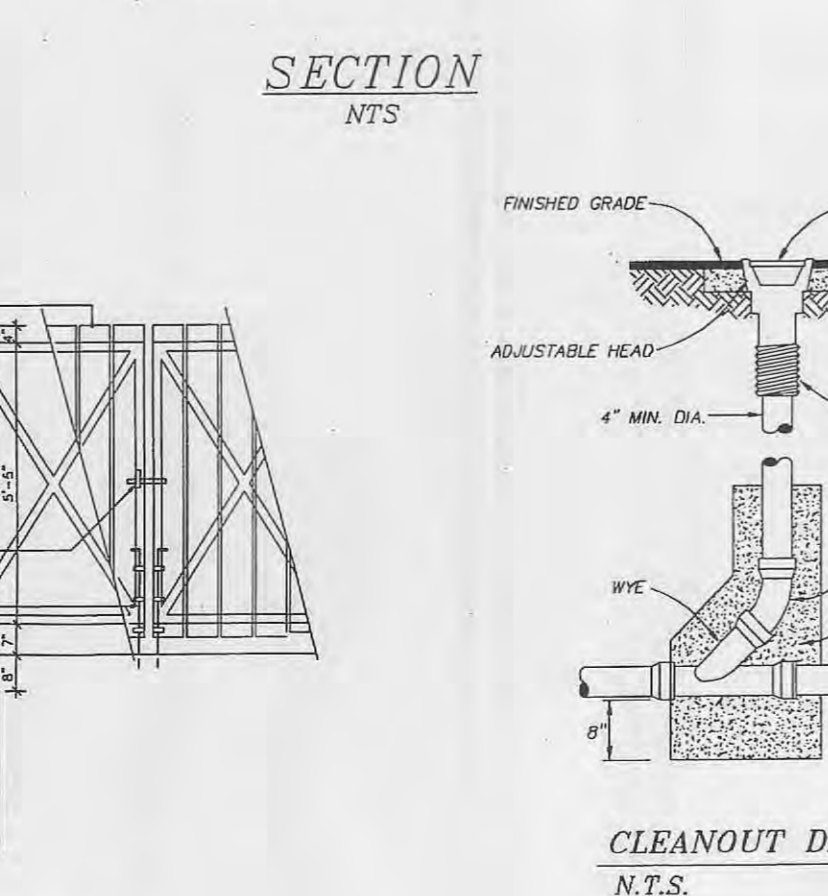
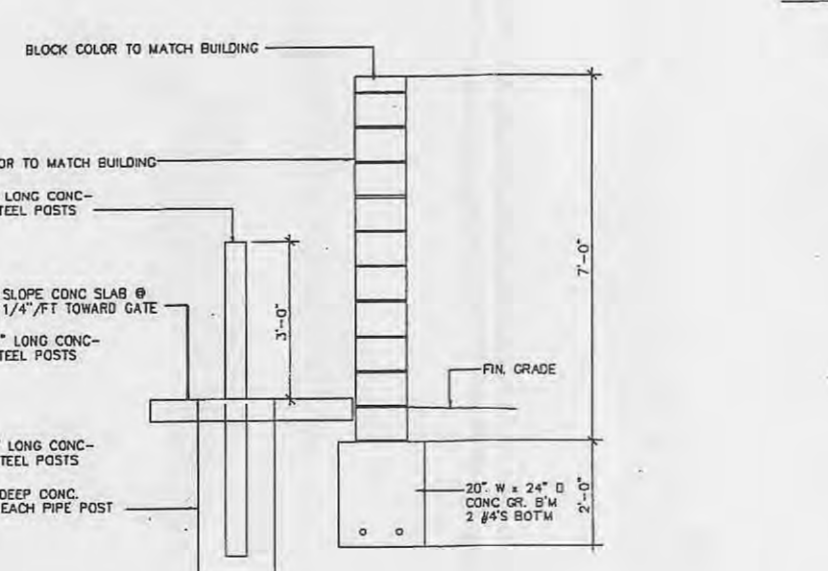
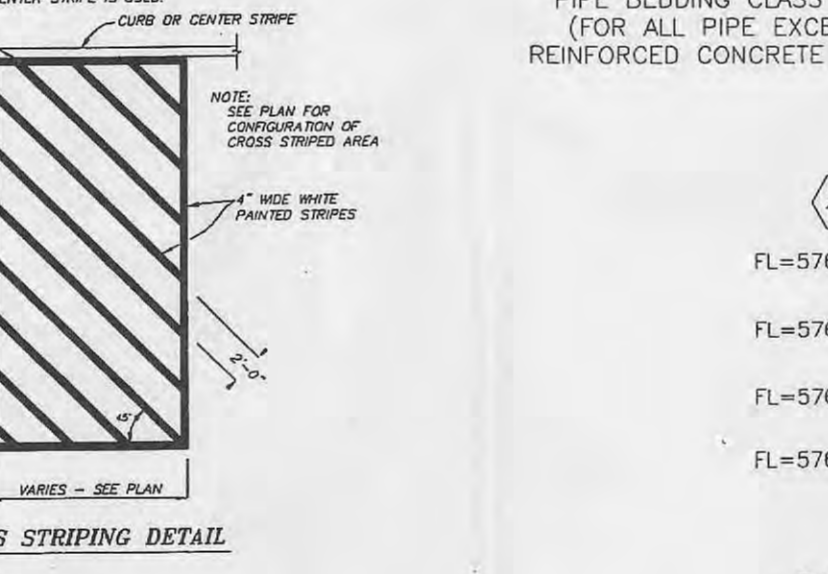
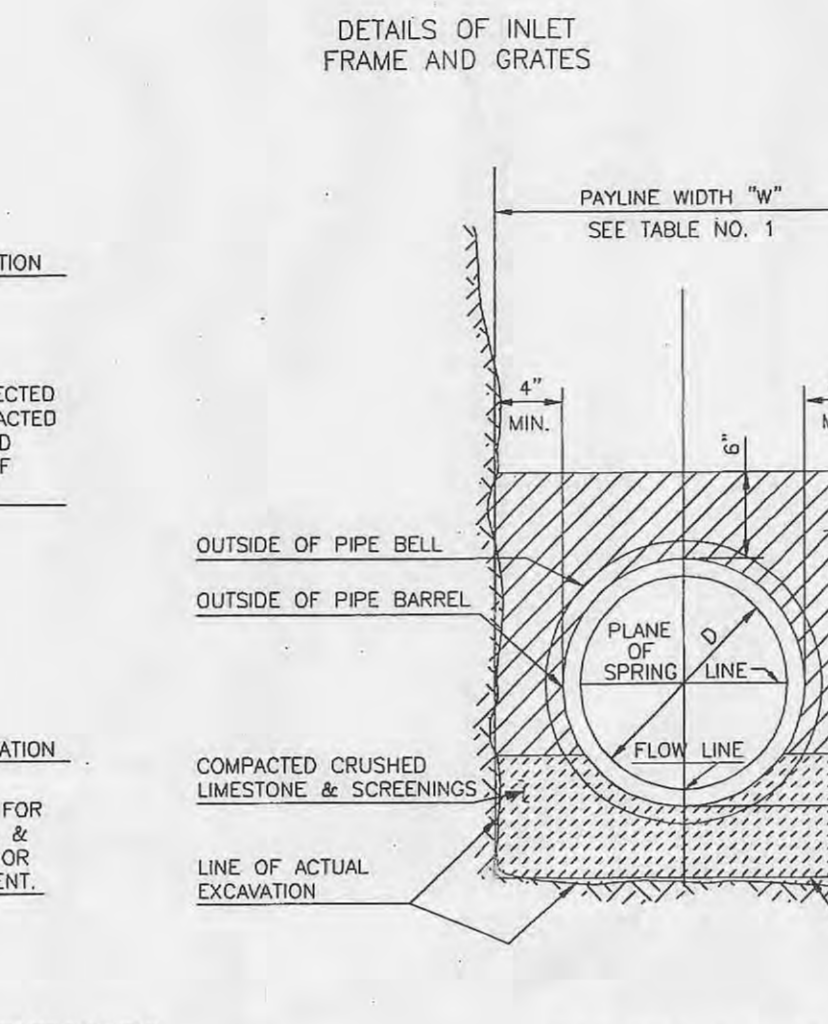
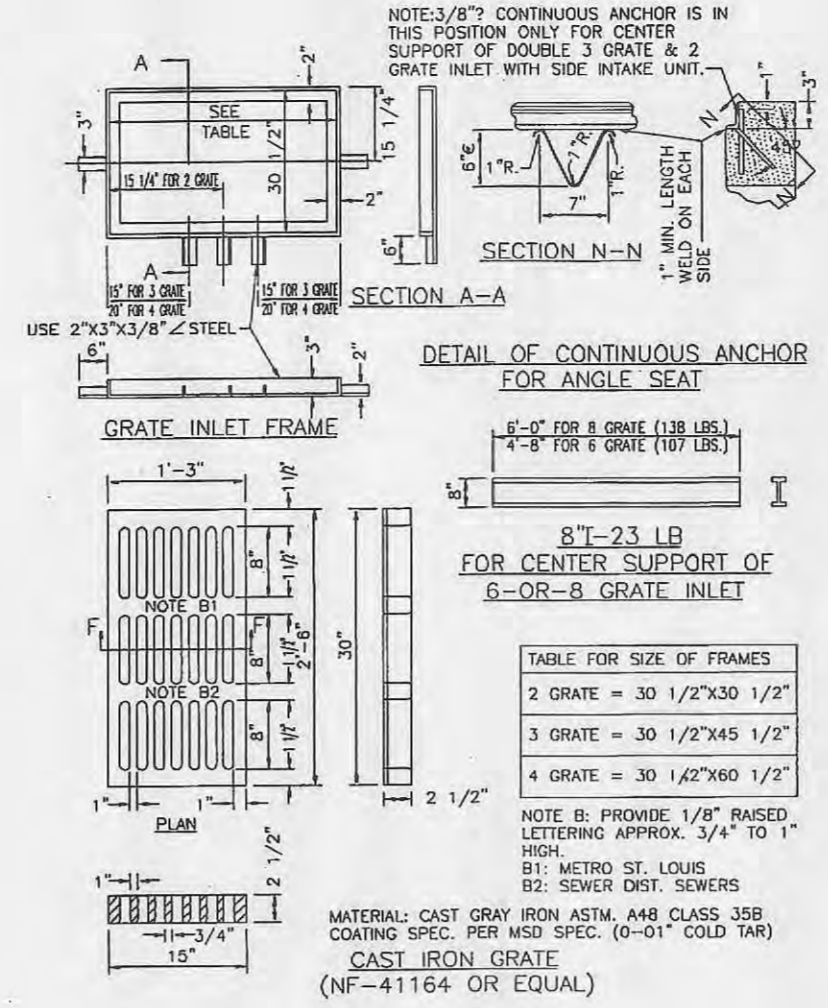
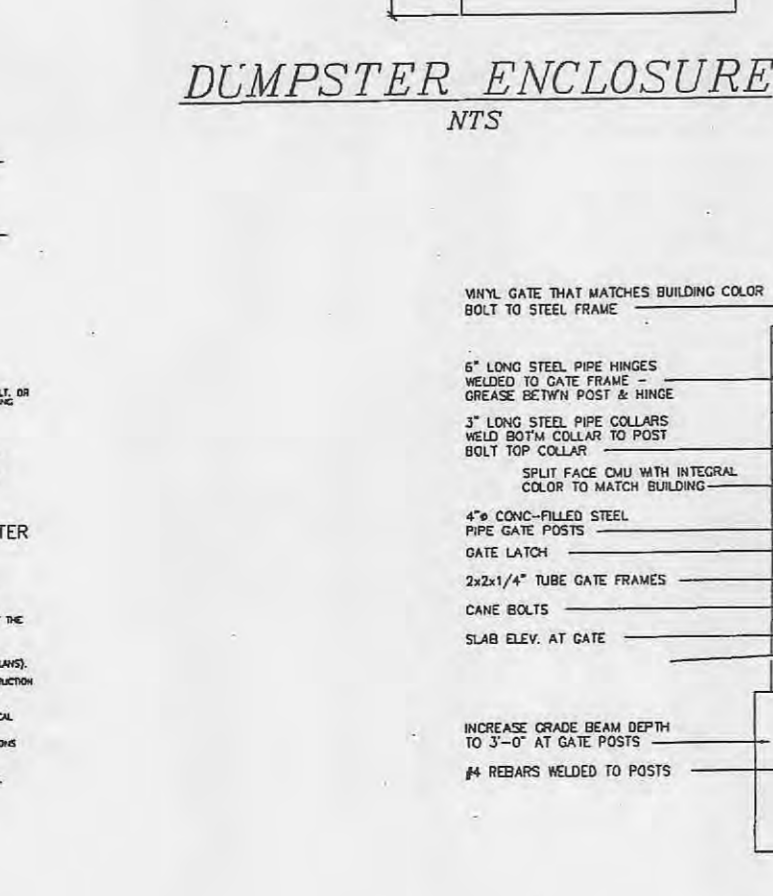
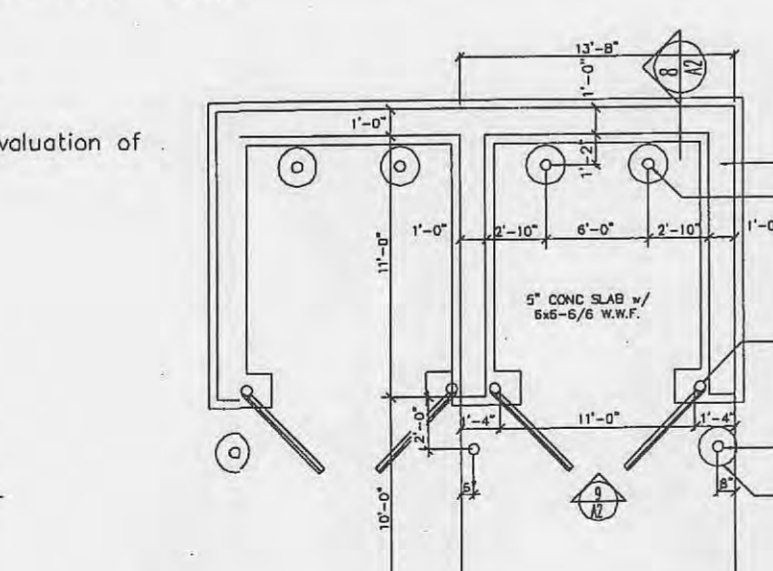
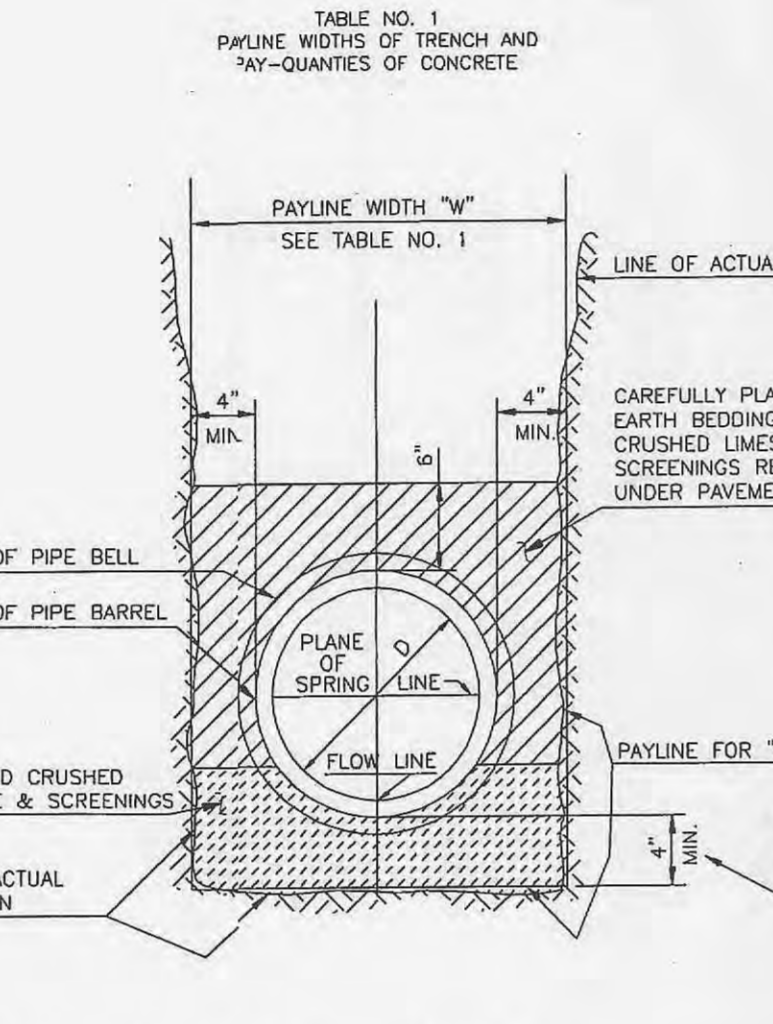


ROUND PIPE	HORIZONTAL ELLIPTICAL PIPE	
	Inside Diameter of Pipe (Feet)	Payline Width of Trench (Feet)
4	28	3.20
6	28	3.33
8	28	3.46
10	28	3.59
12	28	3.72
15	32	4.89
18	35	5.63
21	39	6.61
24	42	7.39
27	45	8.18
30	49	9.30
33	53	10.53
36	56	11.43
39	61	12.91
42	63	13.38
48	70	15.87
54	77	18.15
60	84	20.73
66	91	23.45
72	98	26.37
78	105	29.39
84	112	32.57
90	119	35.90
96	126	39.37
102	133	42.99
108	140	46.75
114	147	50.66
120	154	54.72
126	161	58.92
132	168	63.27
144	182	72.40



**PICKETT RAY & SILVER**  
 CIVIL ENGINEERS  
 PLANNERS  
 LAND SURVEYORS  
 333 Mid Rivers Mall Drive  
 St. Peters, MO 63376  
 Phone (636) 397-1211  
 Fax (636) 397-1104

**HUTCHINGS FARM PLAZA**  
 CONSTRUCTION DETAILS  
 ST. CHARLES COUNTY, MISSOURI  
 Prepared For:  
 Hutchings Farm Plaza LLC  
 8 PARKLAND AVE.  
 GLENDALE, MO 63122

REVISIONS	DATE	ST. CHARLES COUNTY COMMENTS
1	12.16.03	ST. CHARLES COUNTY COMMENTS
2	1.14.04	ST. CHARLES COUNTY COMMENTS
3	1.27.04	ST. CHARLES COUNTY COMMENTS

**ENGINEERS AUTHENTICATION**  
 The responsibility for professional engineering liability on this project is hereby limited to the set of plans authenticated by the seal, signature, and date hereunder attached. Responsibility is disclaimed for all other engineering plans involved in this project and specifically excludes revisions after this date unless reauthenticated.  
**PICKETT RAY & SILVER, INC.**  
 ERIC SCOTT KIRCHNER  
 E-2001004619

DRAWN: J.M. WINTERS  
 CHECKED: E.S. KIRCHNER  
 DATE: 10.23.03  
 DATE: 10.23.03  
 PROJECT # 95234.ARM.OOC  
 TASK # 1 FIELD BOOK  
**HUTCHINGS FARM PLAZA CONSTRUCTION DETAILS**  
 SHEET 8 OF 11  
 Copyright 2003 by Pickett, Ray & Silver Inc.