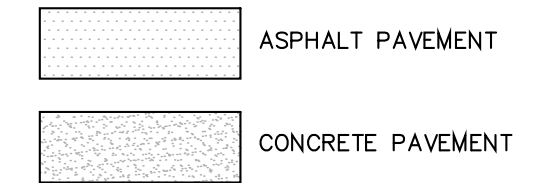


**LEGEND**

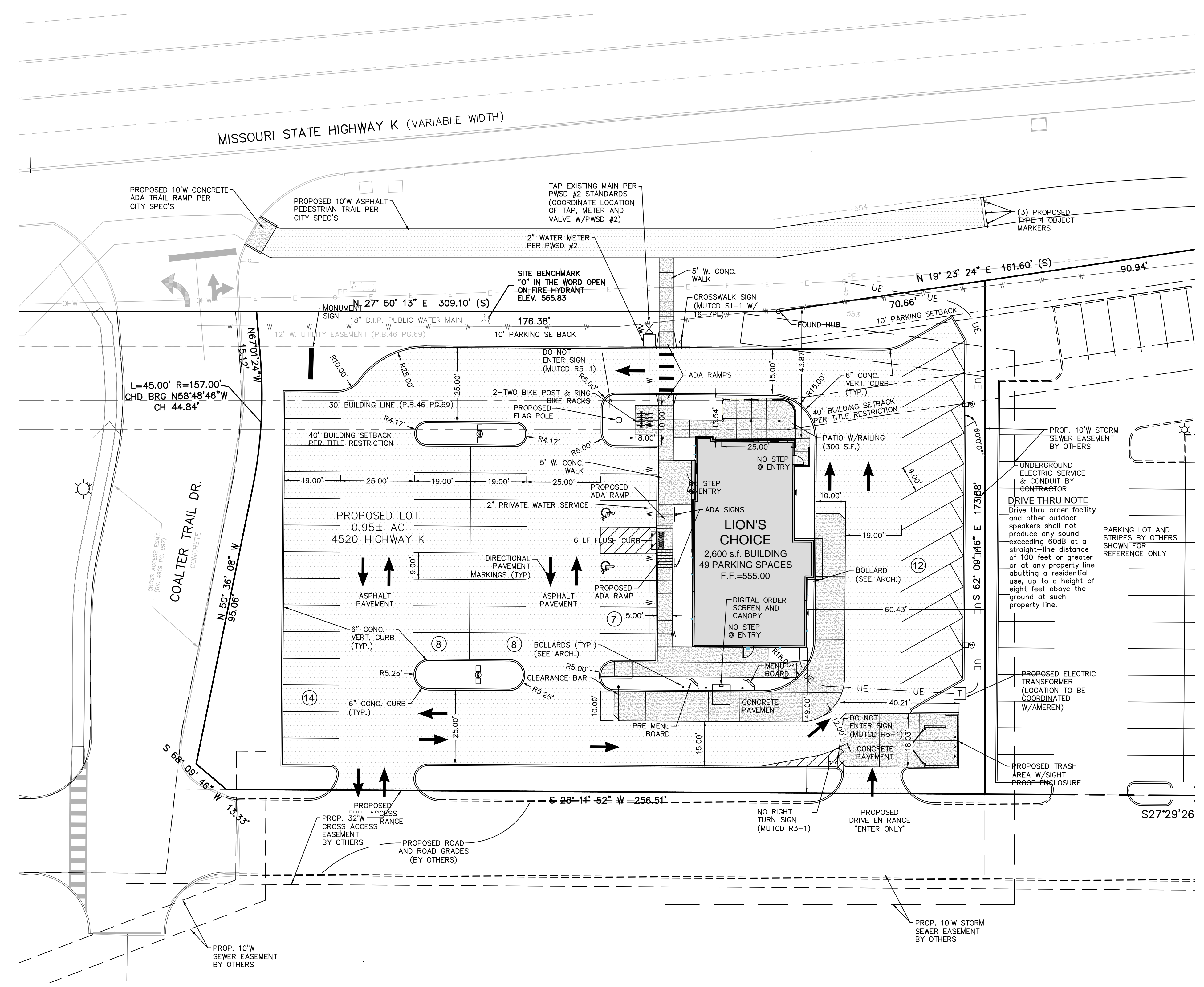


**GENERAL NOTES**

- 1.) ALL UTILITIES SHOWN HAVE BEEN LOCATED FROM AVAILABLE RECORDS. THEIR LOCATION SHOULD BE CONSIDERED APPROXIMATE. THE CONTRACTOR HAS THE RESPONSIBILITY TO NOTIFY ALL UTILITY COMPANIES PRIOR TO CONSTRUCTION, TO HAVE EXISTING UTILITIES FIELD LOCATED. THE CONTRACTOR SHALL BE ON RECORD WITH THE MISSOURI ONE CALL SYSTEM. ALL PROPOSED UTILITIES SHALL BE UNDERGROUND.
- 2.) BOUNDARY AND TOPOGRAPHIC SURVEY BY MARLER SURVEYING COMPANY.
- 3.) ALL ON-SITE MATERIALS AND METHODS OF CONSTRUCTION TO MEET THE CURRENT STANDARDS AND SPECIFICATIONS OF THE CITY OF O'FALLON.
- 4.) ALL GRADED AREAS SHALL BE PROTECTED FROM EROSION BY EROSION CONTROL DEVICES AND/OR SEEDING AND MULCHING AS REQUIRED BY THE CITY OF O'FALLON.
- 5.) PROPOSED CONTOURS SHOWN ARE FINISHED ELEVATIONS ON PAVED AREAS.
- 6.) ALL GRADING AND DRAINAGE TO BE IN CONFORMANCE WITH THE CITY OF O'FALLON.
- 7.) ADEQUATE TEMPORARY OFF-STREET PARKING FOR CONSTRUCTION EMPLOYEES SHALL BE PROVIDED. PARKING ON NON-SURFACED AREAS SHALL BE PROHIBITED IN ORDER TO ELIMINATE THE CONDITION WHEREBY MUD FROM CONSTRUCTION AND EMPLOYEES' VEHICLES IS TRACKED ONTO THE PAVEMENT CAUSING HAZARDOUS ROADWAY AND DRIVEWAY CONDITIONS.
- 8.) ALL SEWER CONSTRUCTION AND MATERIALS TO BE IN ACCORDANCE WITH THE CITY OF O'FALLON AND DUCKETT CREEK SEWER DISTRICT STANDARD CONSTRUCTION SPECIFICATIONS FOR SEWER AND DRAINAGE FACILITIES.
- 9.) THE CONTRACTOR SHALL BE REQUIRED TO VERIFY ALL EXISTING CONDITIONS AT THE SITE PRIOR TO SUBMITTING BID OR STARTING WORK. THE CONTRACTOR SHALL REPORT ANY DISCREPANCIES THAT MAY EXIST BETWEEN THE CONTRACT DOCUMENTS AND REQUEST CLARIFICATION IN WRITING PRIOR TO THE BID.
- 10.) THE CONTRACTOR SHALL COORDINATE CONSTRUCTION PARKING WITH THE OWNER AND/OR THE CITY OF O'FALLON.
- 11.) CONTRACTOR SHALL VERIFY EXISTING UTILITY SERVICES ARE CAPPED OR REMOVED AND/OR ABANDONED AS REQUIRED PER THE SPECIFICATIONS OF THE APPROPRIATE GOVERNING AGENCY.
- 12.) PROVIDE PROTECTIONS NECESSARY TO PREVENT DAMAGE TO EXISTING IMPROVEMENTS AND UTILITIES INDICATED TO REMAIN IN PLACE.
- 13.) LANDSCAPING IRRIGATION SYSTEMS TO BE CAPPED AND REMOVED IN AREAS OF CONSTRUCTION WITH SERVICE LINES AND CAPS FLAGGED OR PROPERLY MARKED FOR FUTURE TIE-INS, IF APPLICABLE.
- 14.) THE CONTRACTOR SHALL BE RESPONSIBLE FOR TRAFFIC CONTROL PER THE CITY OF O'FALLON STANDARDS TO MINIMIZE TRAFFIC DISRUPTION WITHIN RIGHT-OF-WAY OF ADJACENT ROADS.
- 15.) ALL DEBRIS RESULTING FROM THE DEMOLITION OF PAVEMENTS, CURBING, STRUCTURES, FOUNDATION AND FOOTINGS SHALL BE REMOVED FROM THE SITE AND LEGALLY DISPOSED OF UNLESS NOTED OTHERWISE IN THE PROJECT SPECIFICATIONS.
- 16.) PUBLIC UTILITY FACILITIES SUCH AS MANHOLES, METER AND VALVE BOXES OF GAS, ELECTRIC AND TELEPHONE WILL BE ADJUSTED OR RELOCATED BY THE VARIOUS UTILITY COMPANIES. ADJUSTMENT OF UTILITY AND SEWER FACILITIES NOT PROVIDED BY THE UTILITY COMPANIES WILL BE PROVIDED BY THE CONTRACTOR AS NECESSARY.
- 17.) DESIGN OF SHORING FOR UTILITY AND SEWER TRENCHES IS THE RESPONSIBILITY OF THE CONTRACTOR.
- 18.) NO BURNING OF TREES, OVERGROWTH, DEBRIS, BRUSH, OR ANY MATERIAL ALLOWED ON SITE.
- 19.) ANY ABANDONED SEWERS SHALL BE REMOVED OR COMPLETELY GROUT FILLED.
- 20.) THE CONTRACTOR IS RESPONSIBLE FOR THE DESIGN AND VERIFICATION OF THE SIZE OF WATER SERVICE LINES TO HYDRANTS AND THE FIRE SERVICE SIZE TO THE BUILDING AS NECESSARY TO MEET THE FLOW AND PRESSURE REQUIREMENTS OF THE FIRE DISTRICT AND PUBLIC WATER SUPPLY DISTRICT NO. 2.
- 21.) ALL WALKS AND ADA ACCESSIBLE ROUTES SHALL NOT HAVE A CROSS SLOPE THAT EXCEEDS 2% AND A RUNNING SLOPE THAT EXCEEDS 5%.
- 22.) PAVEMENT STRIPING TO BE WHITE.
- 23.) ADA PAVEMENT STRIPING TO BE BLUE.
- 24.) ALL SIGNAGE SHALL REQUIRE APPROVAL THROUGH A SEPARATE PROCESS.

**PUBLIC WATER SUPPLY DISTRICT No. 2 NOTES**

- 1.) THE WATER DISTRICT REQUIRES ONE (1) WEEK NOTICE BEFORE CONSTRUCTION BEGINS.
- 2.) ALL WATER MAINS, VALVES, FITTINGS, HYDRANTS, AND RELATED ITEMS ARE TO BE INSTALLED IN ACCORDANCE WITH THE CURRENT ST. CHARLES COUNTY PWS#2 GUIDELINES AND SPECIFICATIONS.
- 3.) WATER DISTRICT INSPECTOR MUST BE ON SITE TO WITNESS ALL PROPOSED TAPS. WATER DISTRICT PERSONNEL ONLY PERFORM TAPS UP TO 1" IN DIAMETER.
- 4.) ALL METER PITS, VAULTS, AND PYRAMID BOXES MUST BE INSTALLED IN GREEN SPACE.



10820 Sunset Office Drive  
Suite 200  
Saint Louis, Missouri 63127  
314.729.1400  
314.729.1404  
www.cedc.net

**CEDC**  
CIVIL ENGINEERING  
DESIGN CONSULTANTS

Site Improvement Plans  
**Lion's Choice Restaurant**  
4520 HIGHWAY K  
O'Fallon, Missouri 63368

Proj. #	1654
No. Description	Date
1 Rev. per City/Client	7/13/17
To Cottleville FPD	7/17/17
City Resubmittal	7/28/17
City Resubmittal	8/17/17
City Resubmittal	8/31/17

**SITE GEOMETRY AND UTILITY PLAN**

**C05**