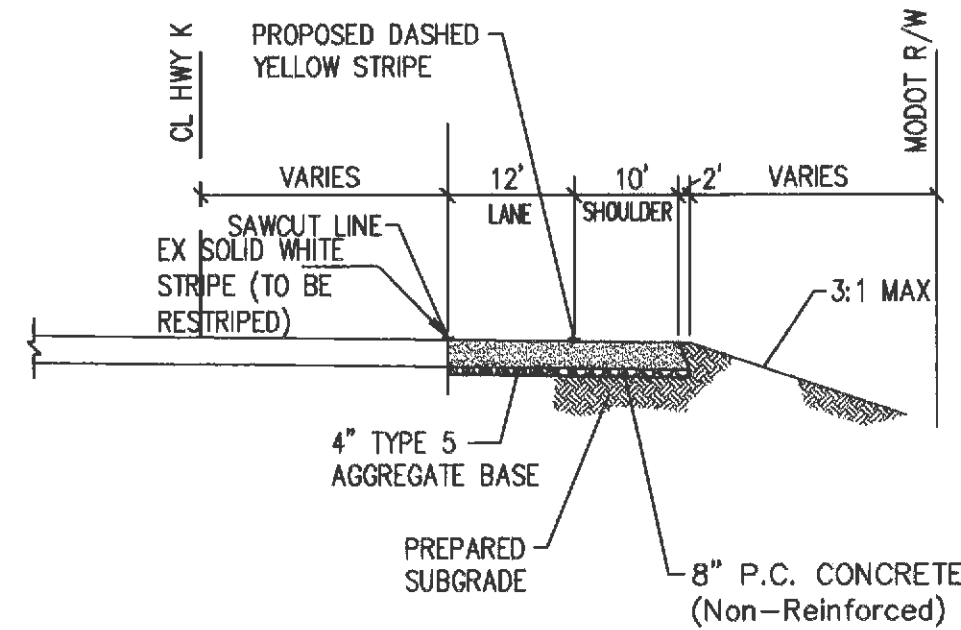
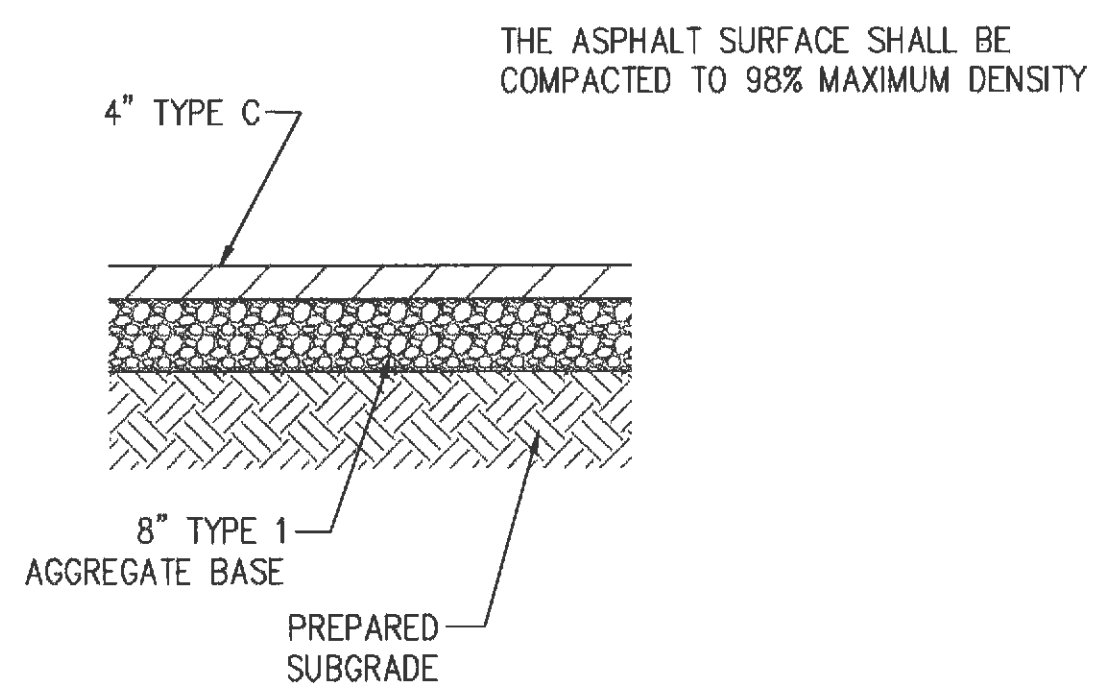


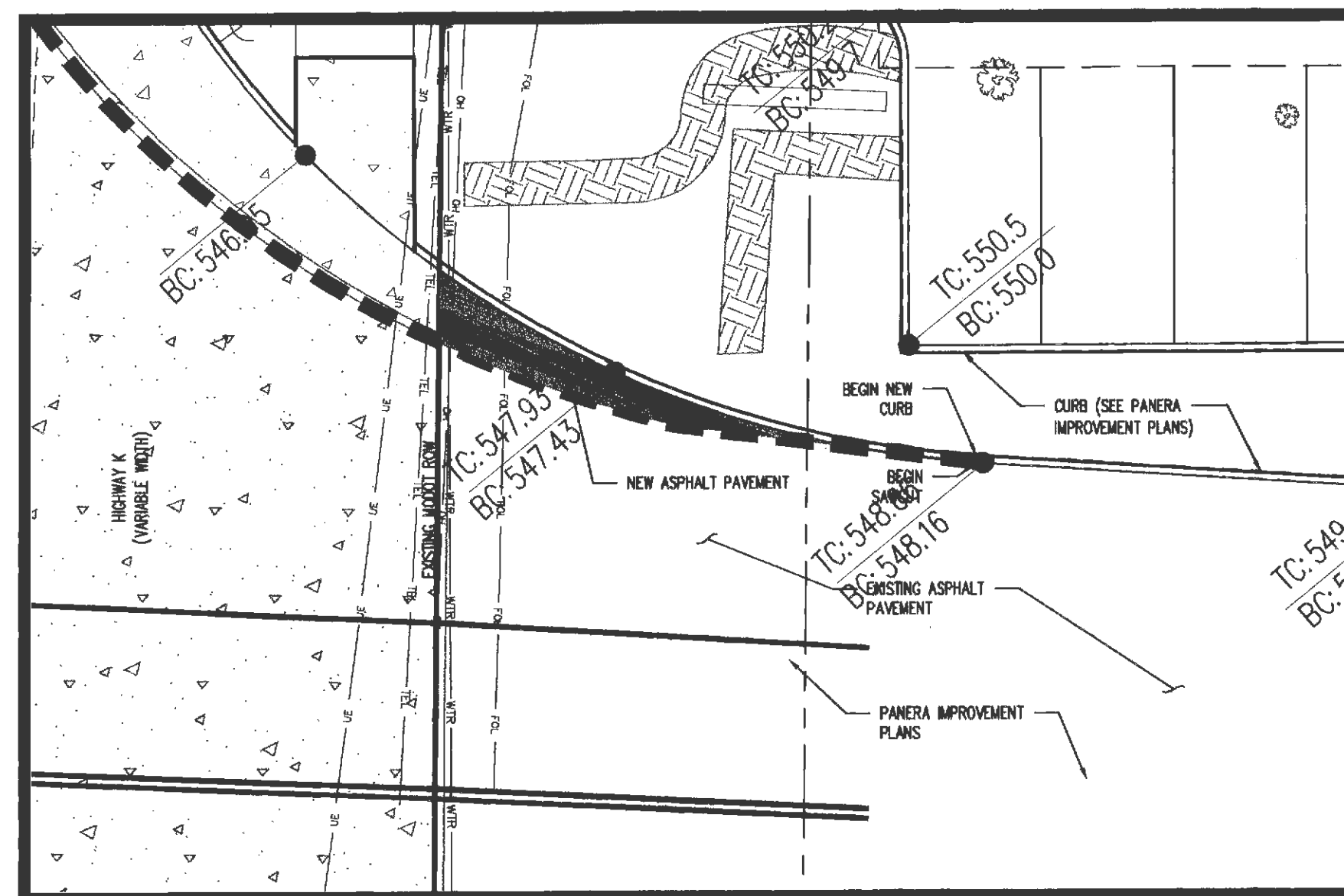
TYPICAL SECTION-ACCESS DRIVE
 (Private Drive)



HIGHWAY K
 TYPICAL PAVEMENT
 WIDENING SECTION

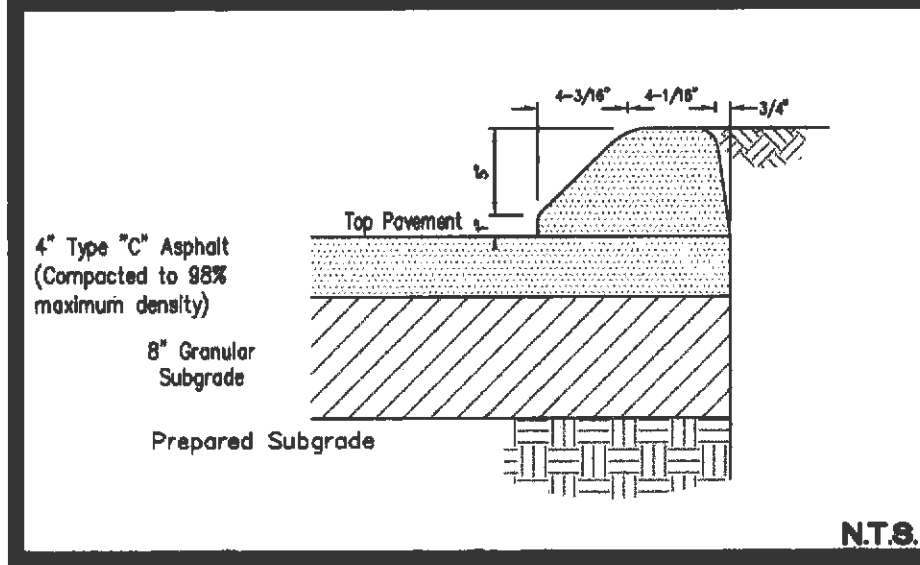


ASPHALT COMMERCIAL ENTRANCE DETAIL
 CONSTRUCTION BEYOND RIGHT-OF-WAY (O'FALLON CENTER ENTRANCE)
 NOT TO SCALE

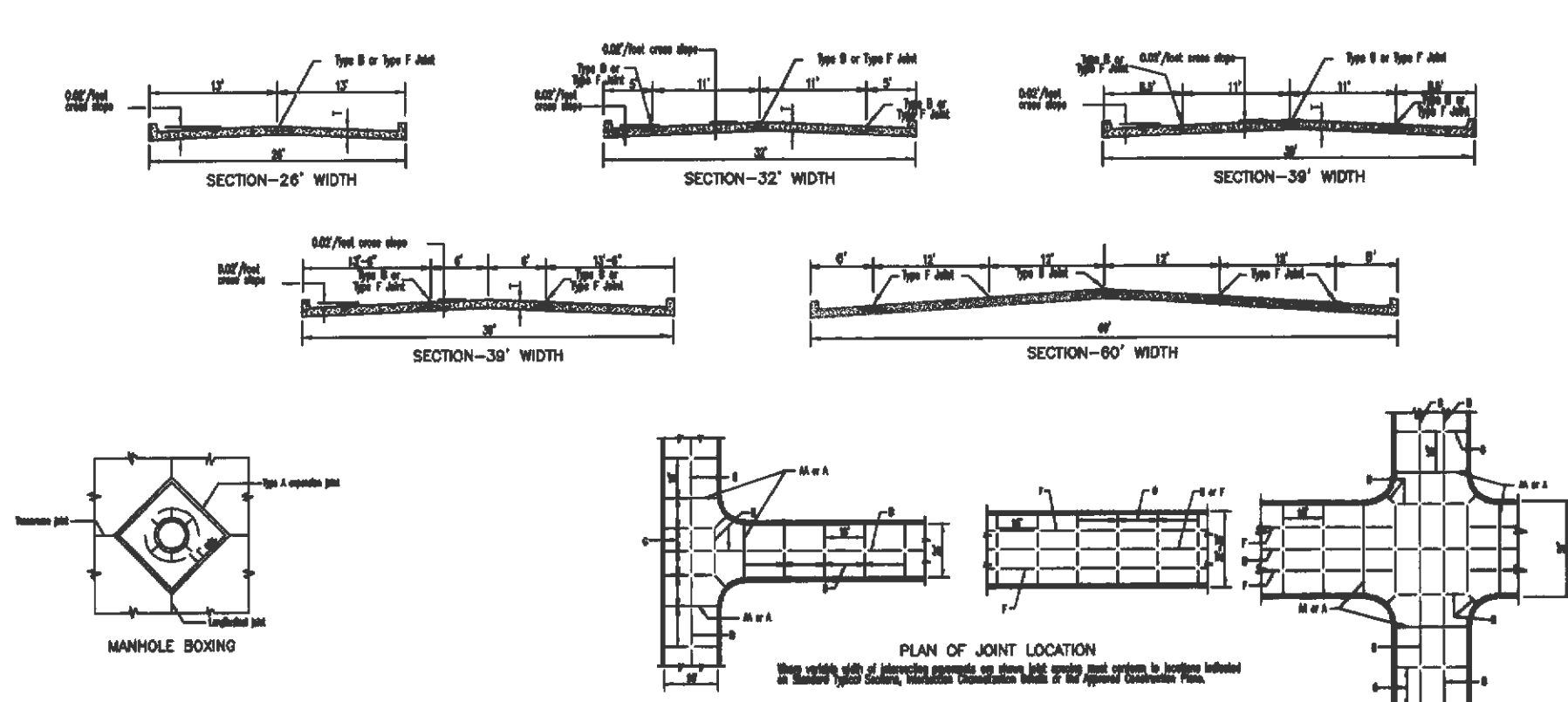


ASPHALT COMMERCIAL ENTRANCE
 CONSTRUCTION BEYOND RIGHT-OF-WAY (PANERA ENTRANCE)
 SCALE: 1"=10'

TEMPORARY ASPHALT CURB



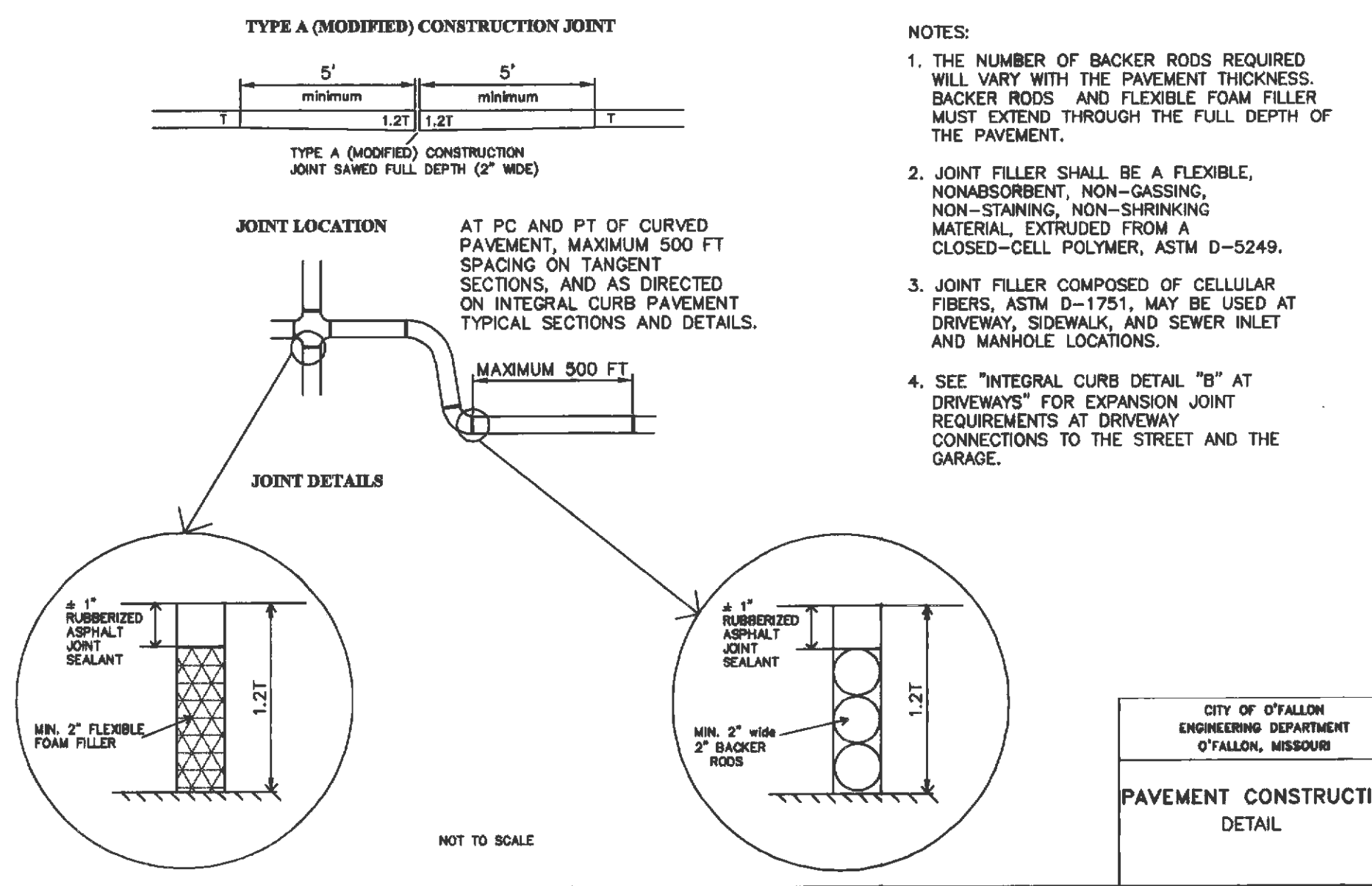
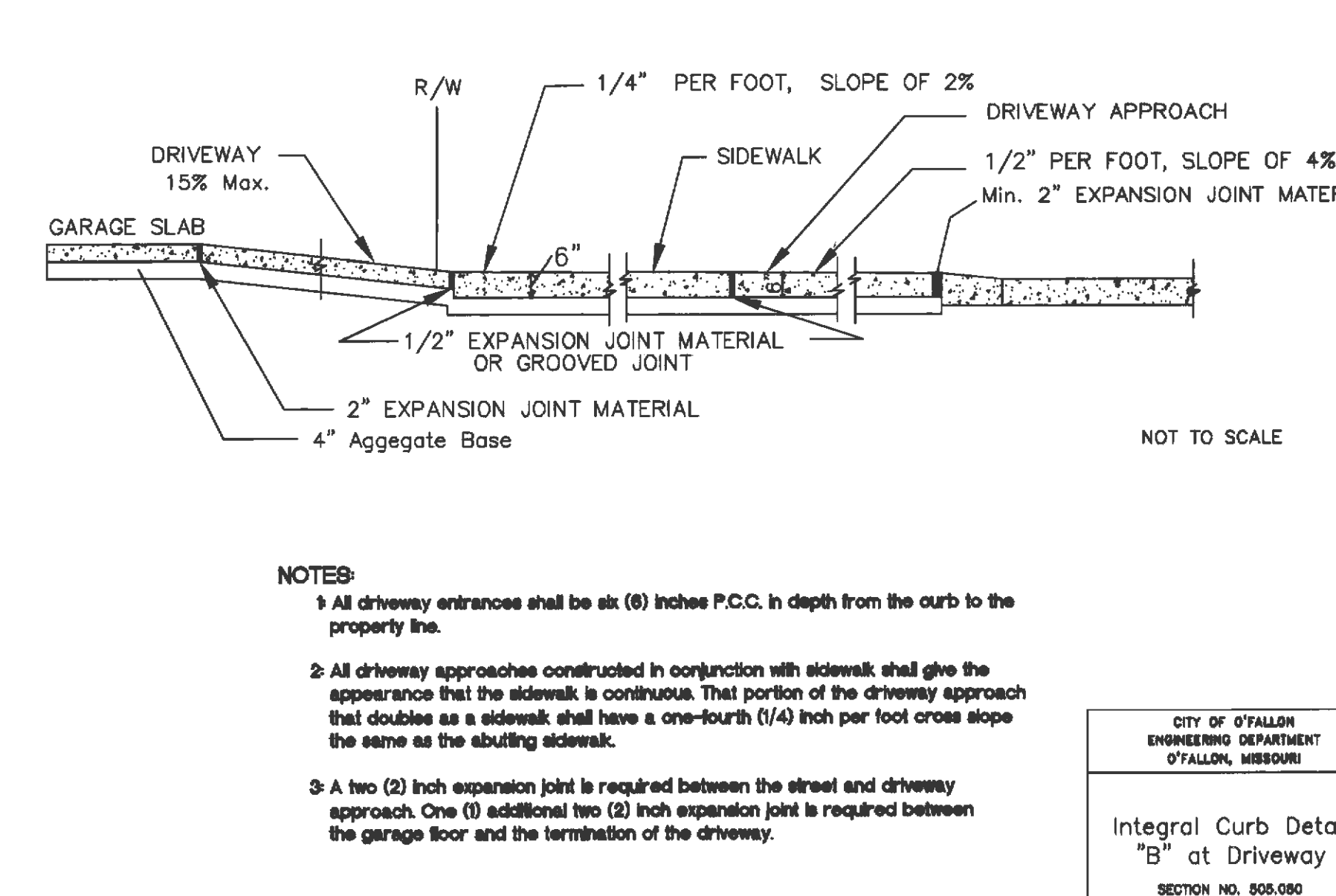
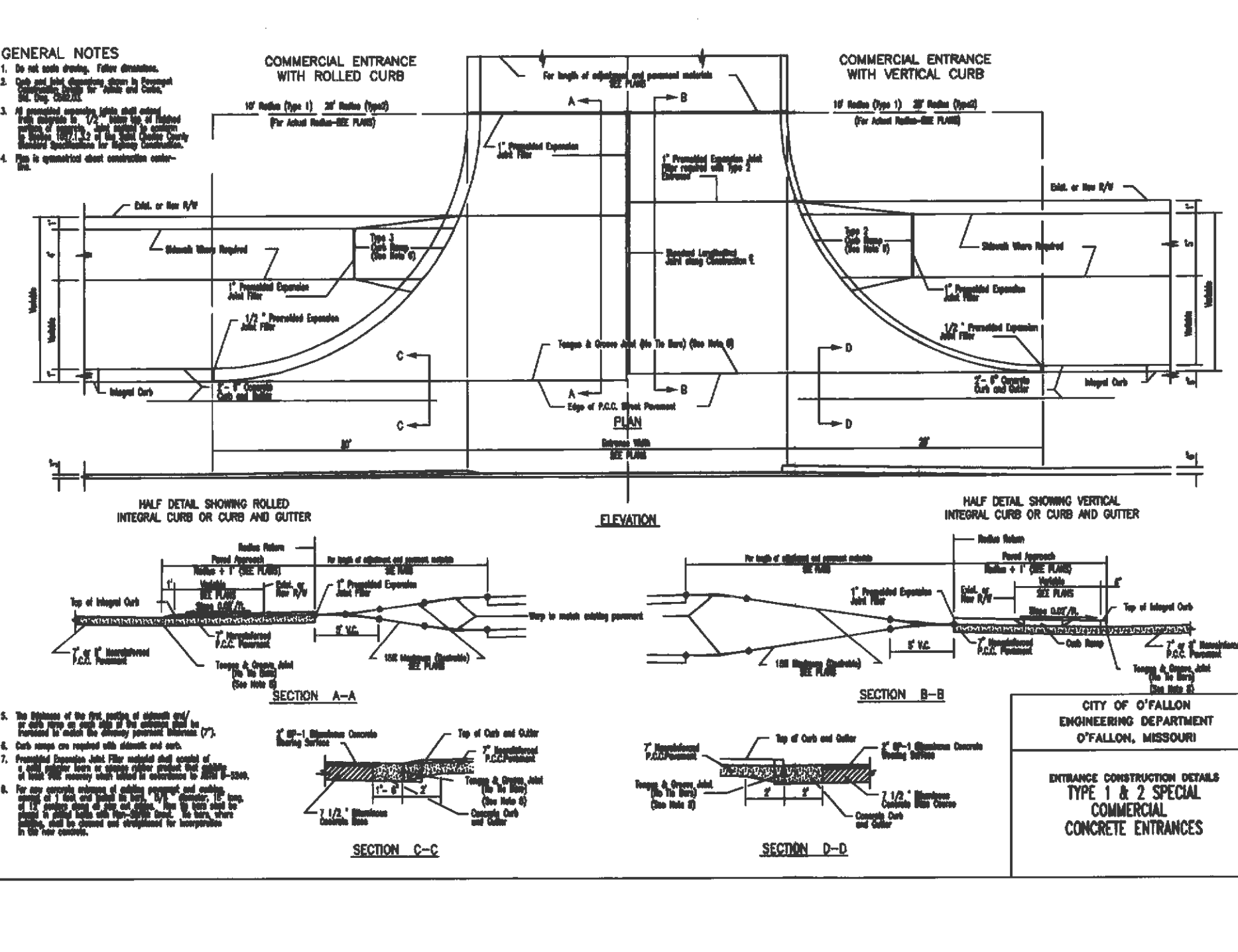
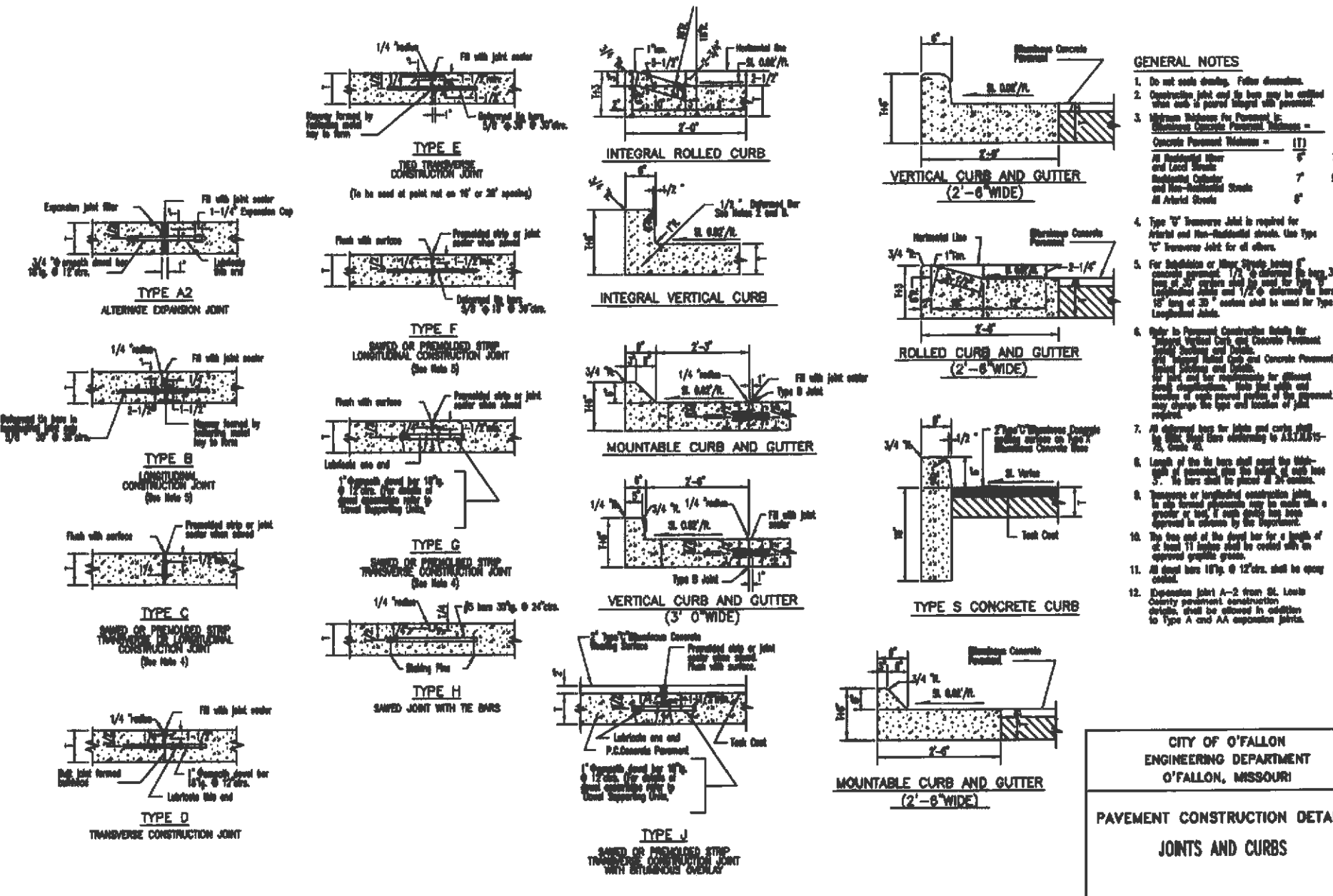
INTEGRAL VERTICAL CURB AND CONCRETE JOINT DETAILS



GENERAL NOTES:
 1. Do not use sandstone. Refer dimensions.
 2. All aggregate shall be crushed rock for concrete and 80% crushed rock for aggregate base.
 3. All aggregate shall be crushed rock for concrete and 80% crushed rock for aggregate base.
 4. All aggregate shall be crushed rock for concrete and 80% crushed rock for aggregate base.

JOINT TYPE	JOINT REQUIREMENT FOR CONCRETE PAVEMENT
At 30' intervals	1/2" expansion joint
At 60' intervals	1/2" expansion joint
At 90' intervals	1/2" expansion joint

CITY OF O'FALLON
 ENGINEERING DEPARTMENT
 O'FALLON, MISSOURI
 PAVEMENT CONSTRUCTION DETAILS
 INTEGRAL VERTICAL CURB
 AND CONCRETE PAVEMENT
 TYPICAL SECTIONS AND DETAILS



DEVELOPER / Owner Information
 K PROPERTIES HOLDINGS, LLC
 1704 NORTH FOURTH STREET
 ST. CHARLES, MO 63301
 CONTACT: MIKE THOLE
 (314) 220-1205

ENGINEER SIGNATURE
 BLOCK
 MICHAEL NEWELL MEINERS
 CIVIL ENGINEER PE-22483

CITY OF O'FALLON
 ENGINEERING DEPARTMENT
 O'FALLON, MISSOURI
 PAVEMENT CONSTRUCTION
 DETAIL

P-1-Z No. 18-12-05
 Approval Date: May 2, 2013
 City No.

Page No.
 19

CITY OF O'FALLON PAVEMENT DETAILS

ST. CHARLES ENGINEERING & SURVEYING, INC.
 601 S. PLYMOUTH STREET, SUITE 204
 ST. CHARLES, MO 63301
 TEL: (636) 947-0507
 FAX: (636) 947-2448