

LEGEND:
 I.D. - NOMINAL PIPE SIZE
 O.D. - OUTSIDE DIAMETER OF PIPE
 H - COVER ABOVE TOP OF PIPE
 A - EMBEDDED BELOW PIPE (SEE TABLE)

TABLE OF EMBEDDED DEPTHS BELOW PIPE

I.D.	M.I. SOL.	M.I. ROCK
2" & SMALLER	3"	6"

CLASS B
 FLAT BOTTOM TRENCH WITH BELL HOLES AND HAND PLACED EMBEDDED

CLASS C
 FLAT BOTTOM TRENCH WITH BELL HOLES AND HAND PLACED EMBEDDED

CLASS D
 FLAT BOTTOM TRENCH WITH BELL HOLES AND HAND PLACED EMBEDDED

LEGEND:
 TAMPED BACK FILL
 COMPACTED BACK FILL
 GRANULAR BEDDING

GRANULAR BEDDING SHALL BE CRUSHED ROCK OR PEA GRAVEL WITH NOT LESS THAN 85% PASSING 1/2" (80% PASSING 3/4" FOR 30" AND LARGER PIPE) AND NOT LESS THAN 80% RETAINED ON A #10 TO BE PLACED IN NOT MORE THAN 6" LAYERS AND COMPACTED BY SLICING WITH A SHOVEL OR VIBRATING.

COMPACTED BACK FILL SHALL BE FINELY DIVIDED JOB EXCAVATED MATERIAL FREE FROM DEBRIS, ORGANIC MATERIAL AND STONES, PLACED IN UNIFORM LAYERS NOT MORE THAN 6" THICK, COMPACTED TO 95% MAXIMUM DENSITY AS DETERMINED BY A.S.T.M. D1556, OR GRADEEQUVALENT. GRANULAR BACK FILL MATERIAL MAY BE SUBSTITUTED FOR ALL OR PART OF COMPACTED BACK FILL.

TAMPED BACK FILL SHALL BE FINELY DIVIDED JOB EXCAVATED MATERIAL FREE FROM DEBRIS, ORGANIC MATERIAL AND STONES, HAND PLACED BY UNIFORM LAYERS NOT MORE THAN 6" THICK AND TAMPED AROUND CONDUIT PIPE. GRANULAR BACK FILL MATERIAL MAY BE SUBSTITUTED FOR ALL OR PART OF TAMPED BACK FILL.

TRENCH BACK FILL SHALL BE AS REQUIRED IN THE "LAYING AND BACK FILL" SECTION OF THE DETAILED SPECIFICATIONS.

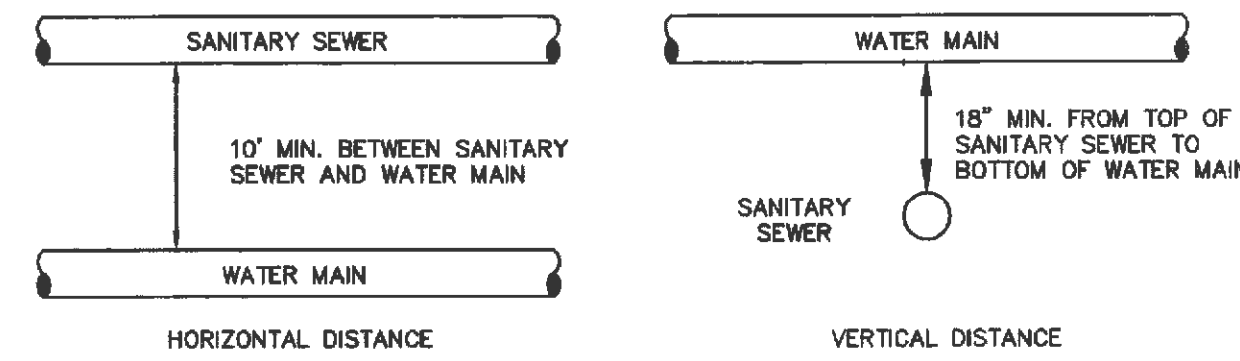
EMBEDDED TYPE OF PIPE TO BE USED SHALL BE AS SPECIFIED IN THE PLANS AND SPECIFICATIONS.

TRACER WIRE REQUIRED ON ALL WATER MAINS

WATER MAIN EMBEDDED
 NOT TO SCALE

CITY OF O'FALLON
 ENGINEERING DEPARTMENT
 O'FALLON, MISSOURI

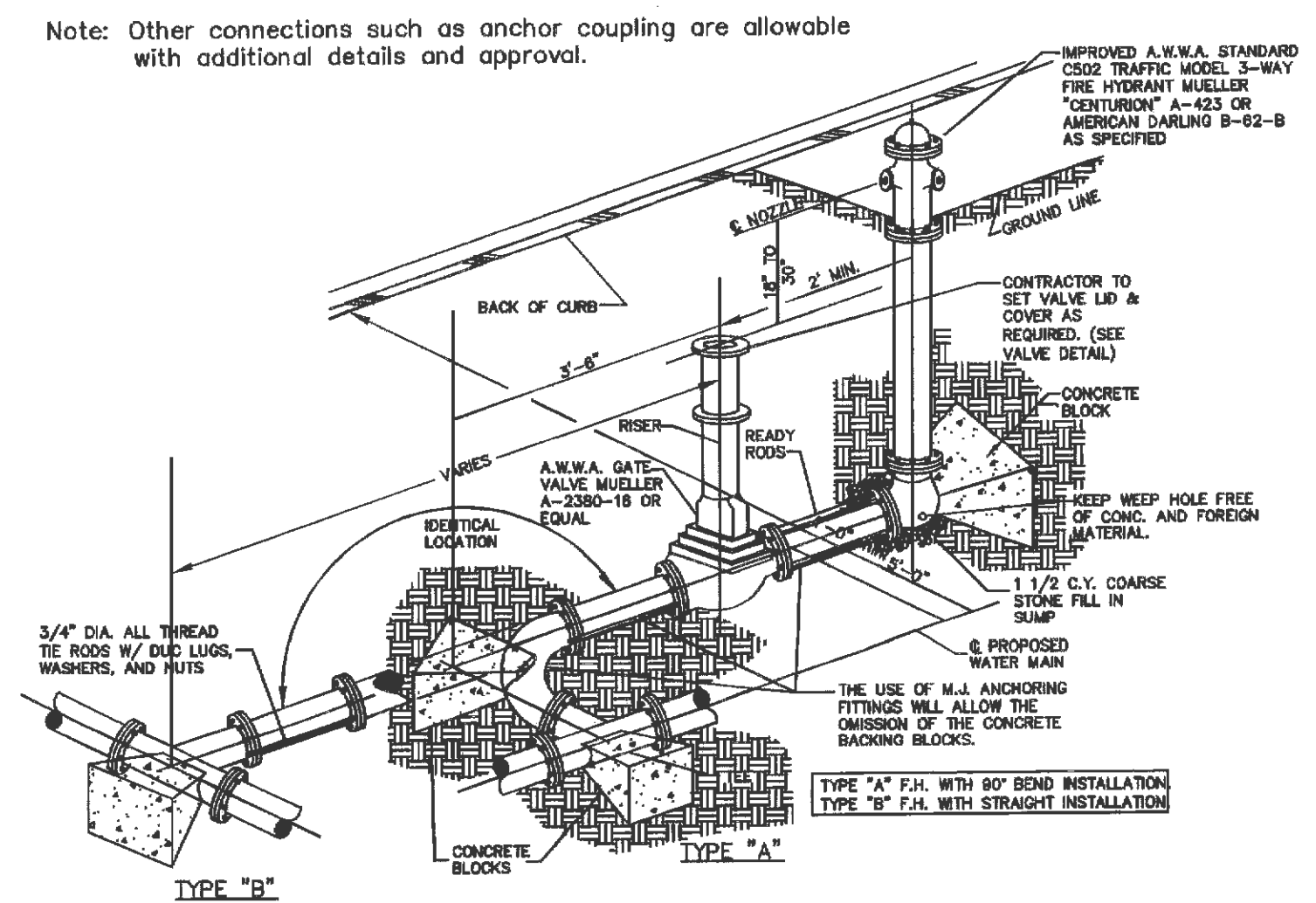
WATER MAIN EMBEDDED



TYPICAL WATER AND SEWER SEPARATION
 NOT TO SCALE

CITY OF O'FALLON
 ENGINEERING DEPARTMENT
 O'FALLON, MISSOURI

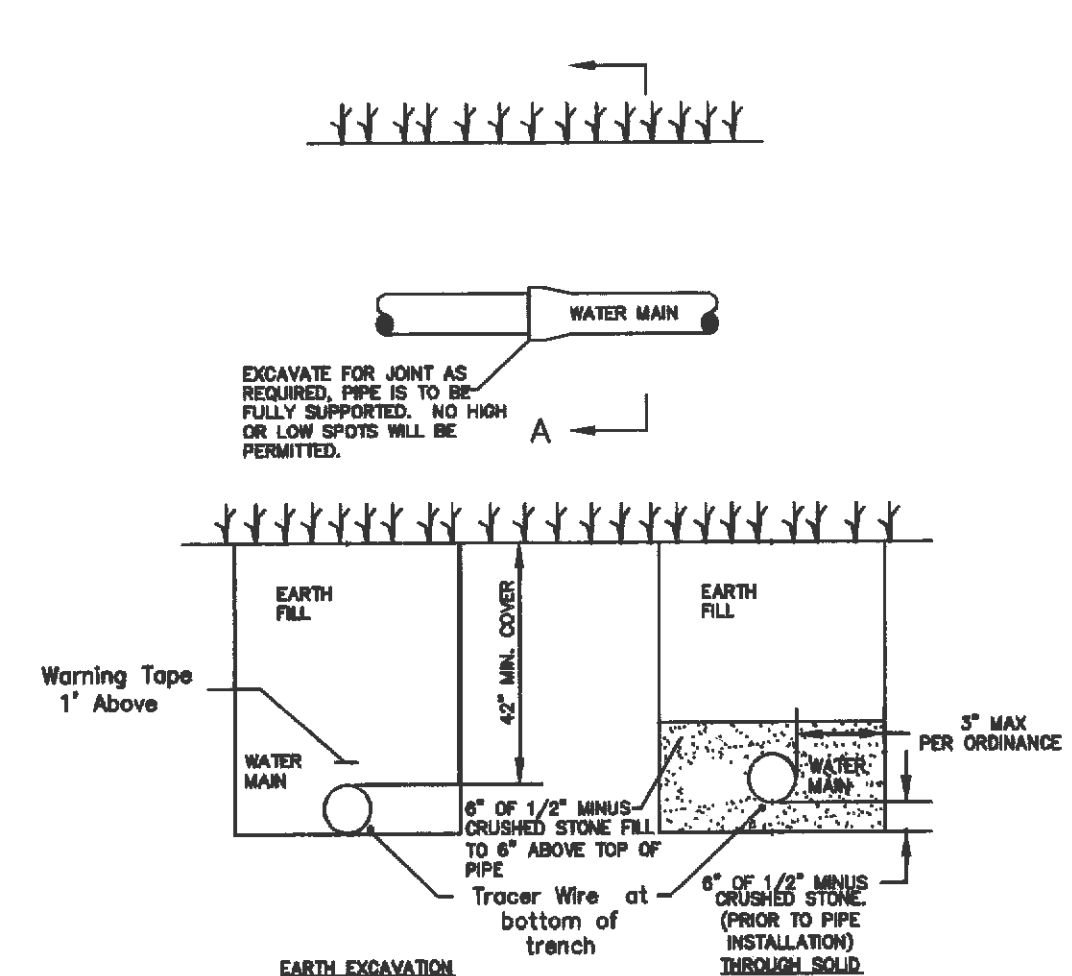
WATER AND SEWER SEPARATION DETAIL



CITY OF O'FALLON
 ENGINEERING DEPARTMENT
 O'FALLON, MISSOURI

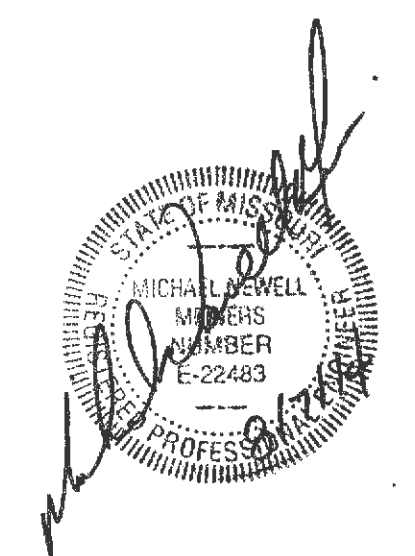
FIRE HYDRANT DETAILS

Ductile Iron Pipe installation shall follow the Ductile Iron Research Association (DIPRA) guide line.
 The Installation of PVC Pipe shall follow the Uni-Bell PVC Pipe Association Handbook of PVC Design and Construction.



CITY OF O'FALLON
 ENGINEERING DEPARTMENT
 O'FALLON, MISSOURI

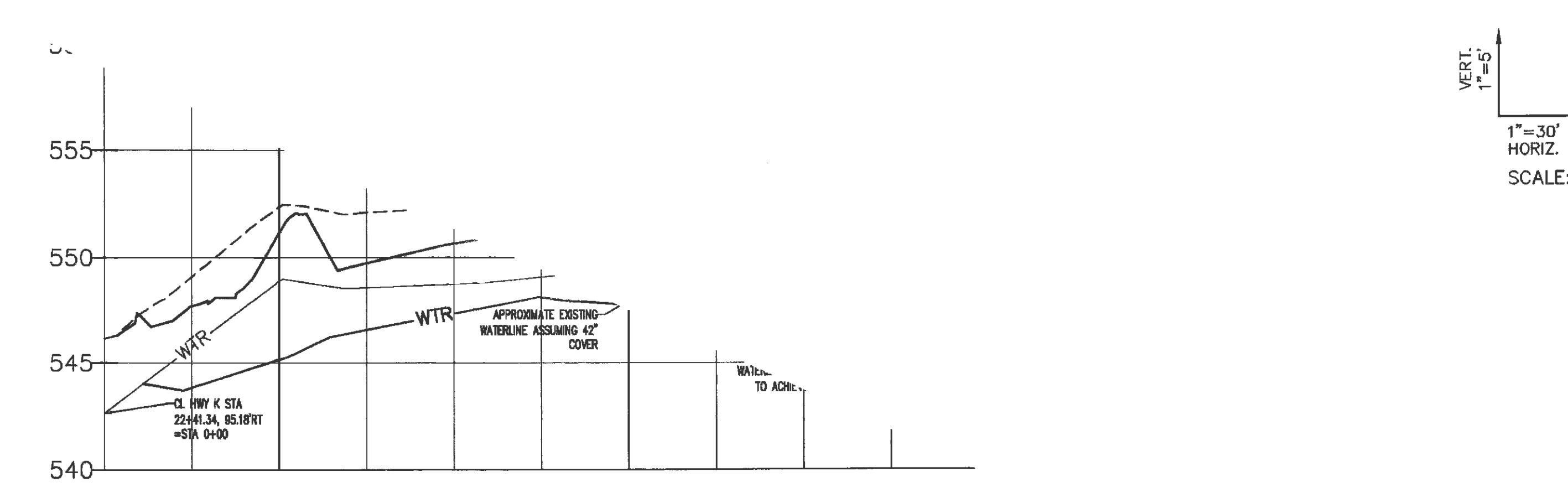
WATER MAIN INSTALLATION DETAIL



ENGINEER SIGNATURE BLOCK

STATE OF MISSOURI
 MICHAEL NEWELL
 MEMBER
 LICENSE NO. 22483
 PROFESSIONAL ENGINEER
 CIVIL ENGINEER PE-22483

WATER LINE PROFILE



547.69	549.093	551.17	552.380	549.73	552.135	550.66	552.333	551.32	552.815	551.24	553.088	550.93	553.403	550.57	553.861	550.48	554.168	550.67	554.249	550.32	554.078	551.06	553.459	551.93	552.176	
0+25	0+50	0+75	1+00	1+25	1+50	1+75	2+00	2+25	2+50	2+75	3+00	3+25														

City of O'Fallon Standard Commercial Notes and Details - June 2010

Developer / Owner Information
 K PROPERTIES HOLDINGS, LLC
 1704 NORTH FOURTH STREET
 ST. CHARLES, MO 63301
 CONTACT: MIKE THOELE
 (314) 220-1205

CITY OF O'FALLON WATER DETAILS

P+Z No. 18-12.05
 Approval Date: May 2, 2013
 City No.

Page No.
 18