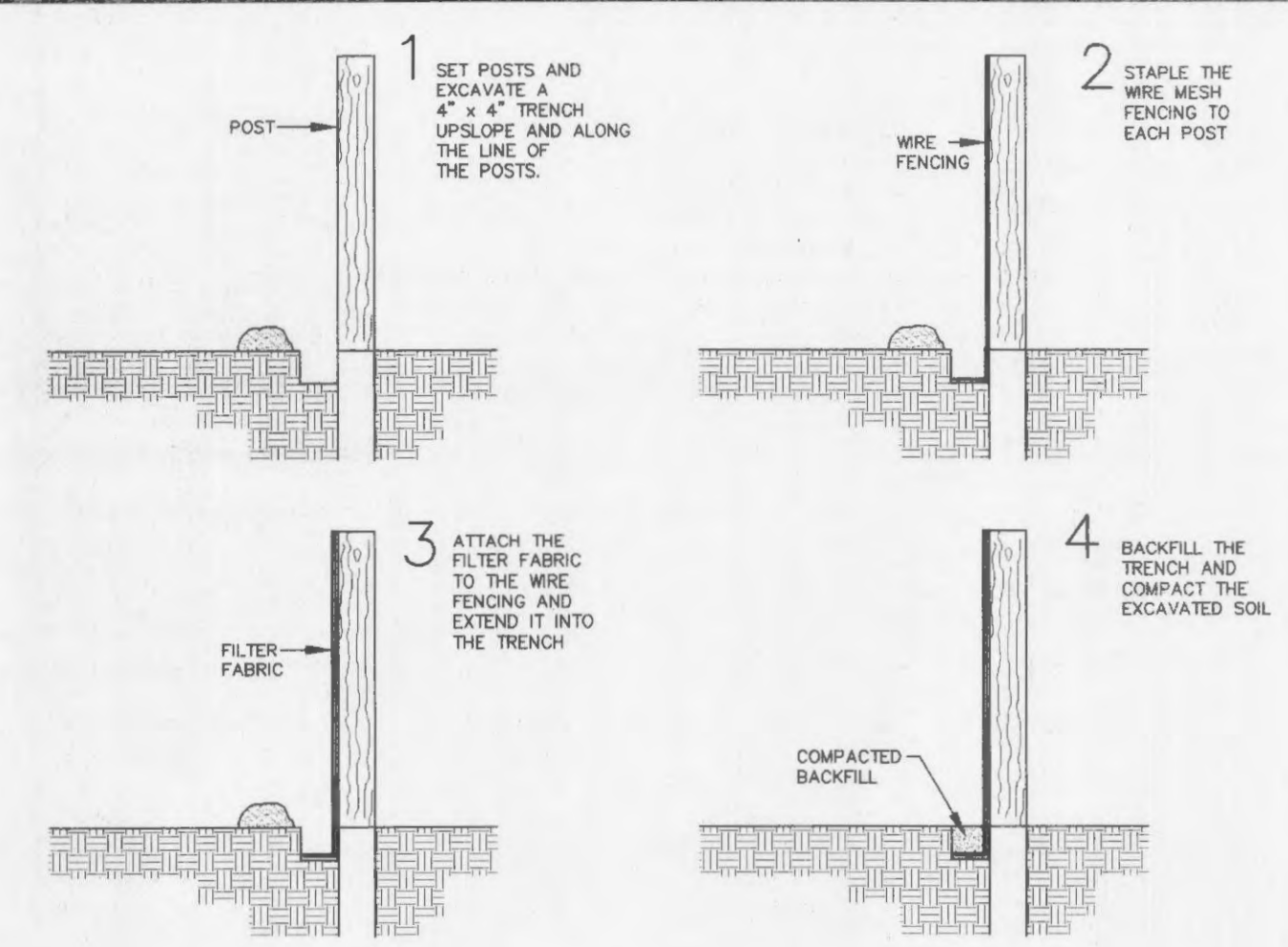
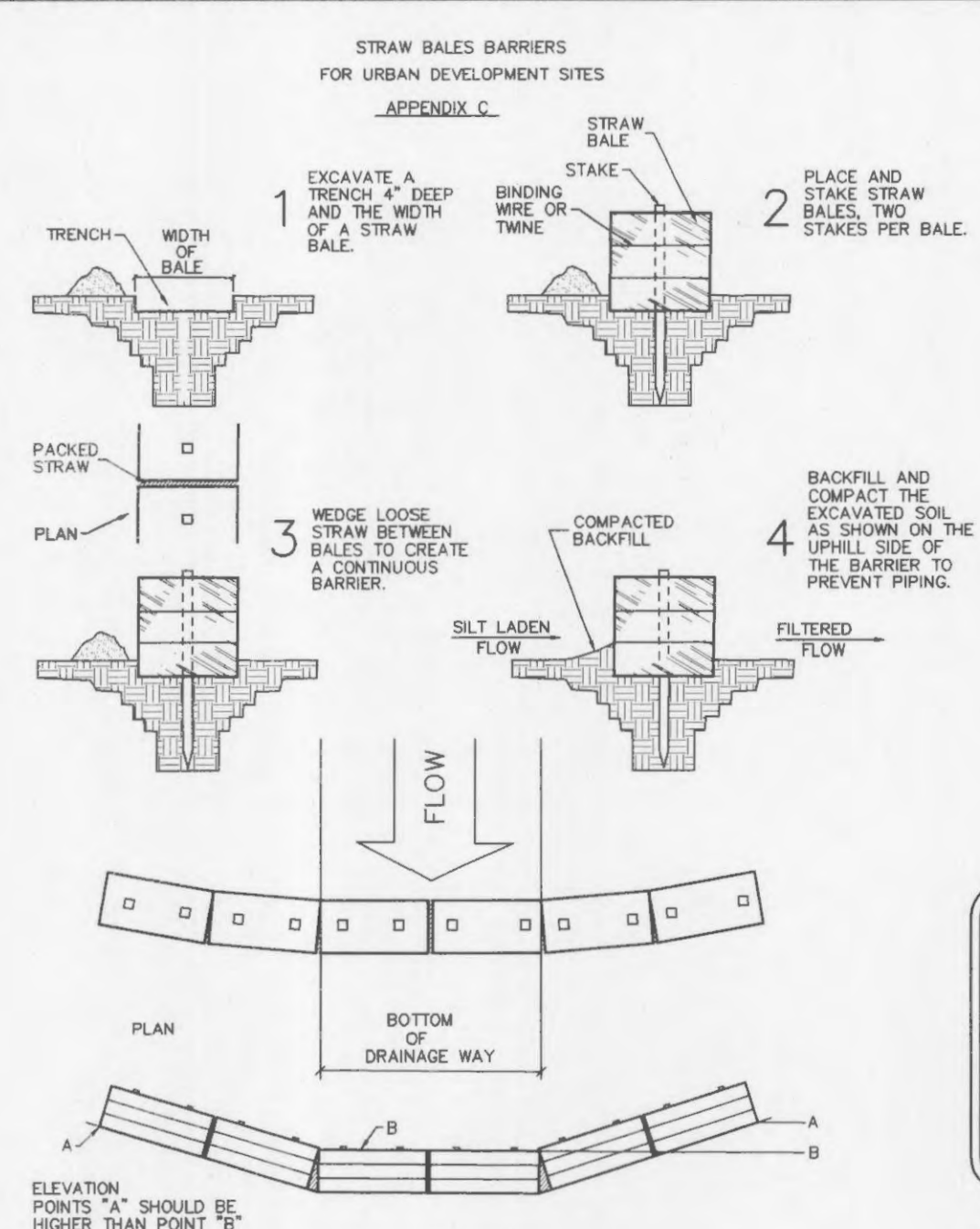
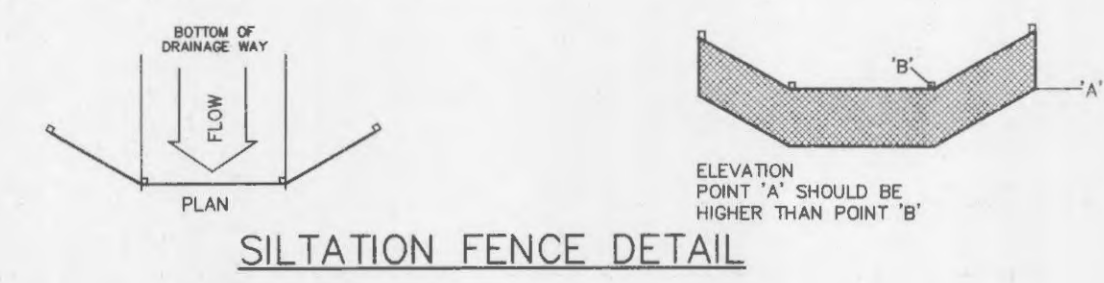


- CONSTRUCTION SPECIFICATIONS**
1. Stone Size - Use 2" stone, or reclaimed or recycled concrete equivalent.
  2. Length - As required, but not less than 50 feet (except on a single residence lot where a 30 foot minimum length would apply).
  3. Thickness - Not less than six (6) inches.
  4. Width - Twenty (20) foot minimum, but not less than the full width at points where ingress or egress occurs.
  5. Filter Cloth - Will be placed over the entire area prior to placing of stone. Filter will not be required on a single family residence lot.
  6. Surface Water - All surface water flowing or diverted toward construction entrances shall be piped across the entrance. If piping is impractical, a mountable berm with 5:1 slopes will be permitted.
  7. Maintenance - The entrance shall be maintained in a condition which will prevent tracking or flowing of sediment onto public rights-of-way. This may require periodic top dressing with additional stone as conditions demand and repair and/or cleanout of any measures used to trap sediment. All sediment spilled, dropped, washed or tracked onto public rights-of-way must be removed immediately.
  8. Washing - Wheels shall be cleaned to remove sediment prior to entrance onto public rights-of-way. When washing is required, it shall be done on an area stabilized with stone and which drains into an approved sediment trapping device.
  9. Periodic inspection and needed maintenance shall be provided after each rain.



1. FILTER BARRIERS SHALL BE INSPECTED IMMEDIATELY AFTER EACH RAINFALL AND AT LEAST DAILY DURING PROLONGED RAINFALL. ANY REQUIRED REPAIRS SHALL BE MADE IMMEDIATELY.
2. SHOULD THE FABRIC DECOMPOSE OR BECOME INEFFECTIVE PRIOR TO THE END OF THE EXPECTED USABLE LIFE AND THE BARRIER STILL BE NECESSARY, THE FABRIC SHALL BE REPLACED PROMPTLY.
3. SEDIMENT DEPOSITS SHOULD BE REMOVED AFTER EACH STORM EVENT. THEY MUST BE REMOVED WHEN DEPOSITS REACH APPROXIMATELY HALF THE HEIGHT OF THE BARRIER.
4. ANY SEDIMENT DEPOSITS REMAINING IN PLACE AFTER THE SILT FENCE OR FILTER BARRIER IS NO LONGER REQUIRED SHALL BE DRESSED TO CONFORM WITH THE EXISTING GRADE, PREPARED AND SEEDED.

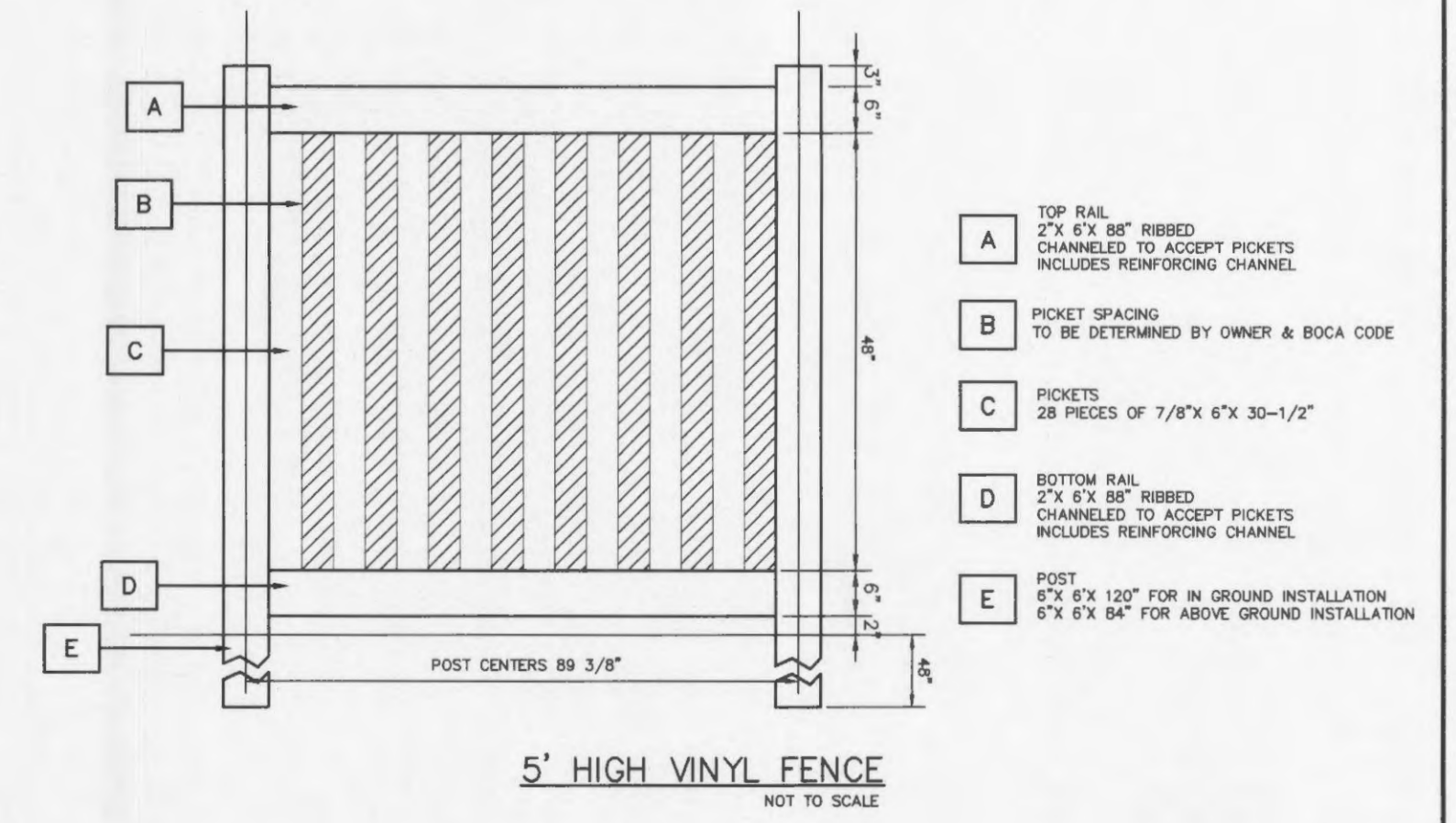


**PLACEMENT AND CONSTRUCTION OF STRAW BAIL BARRIER**

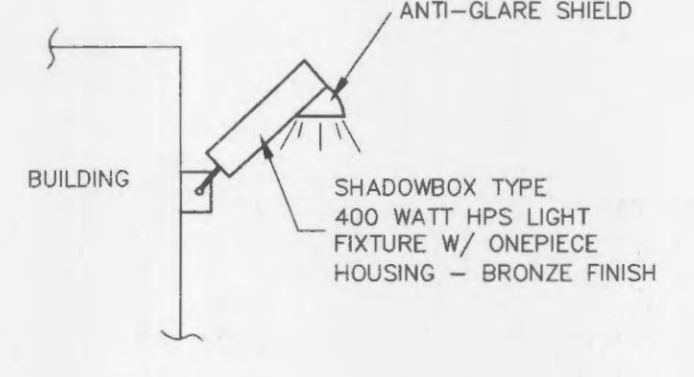
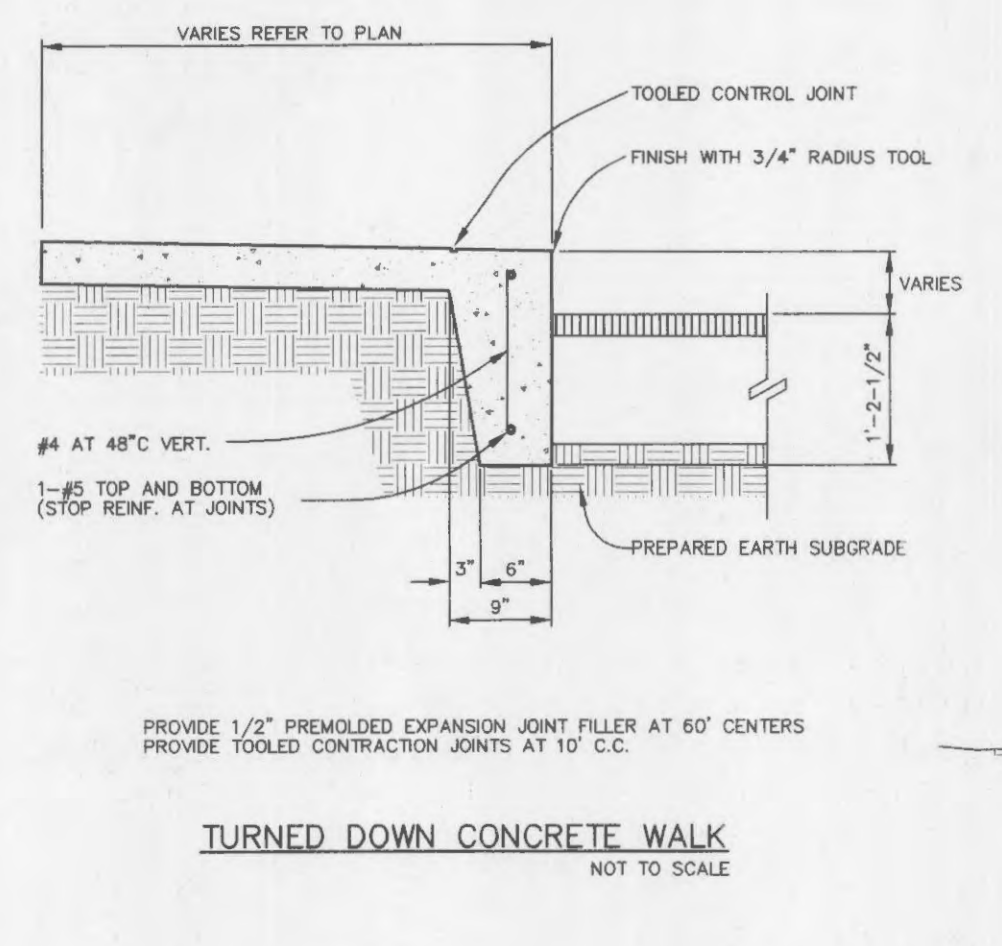
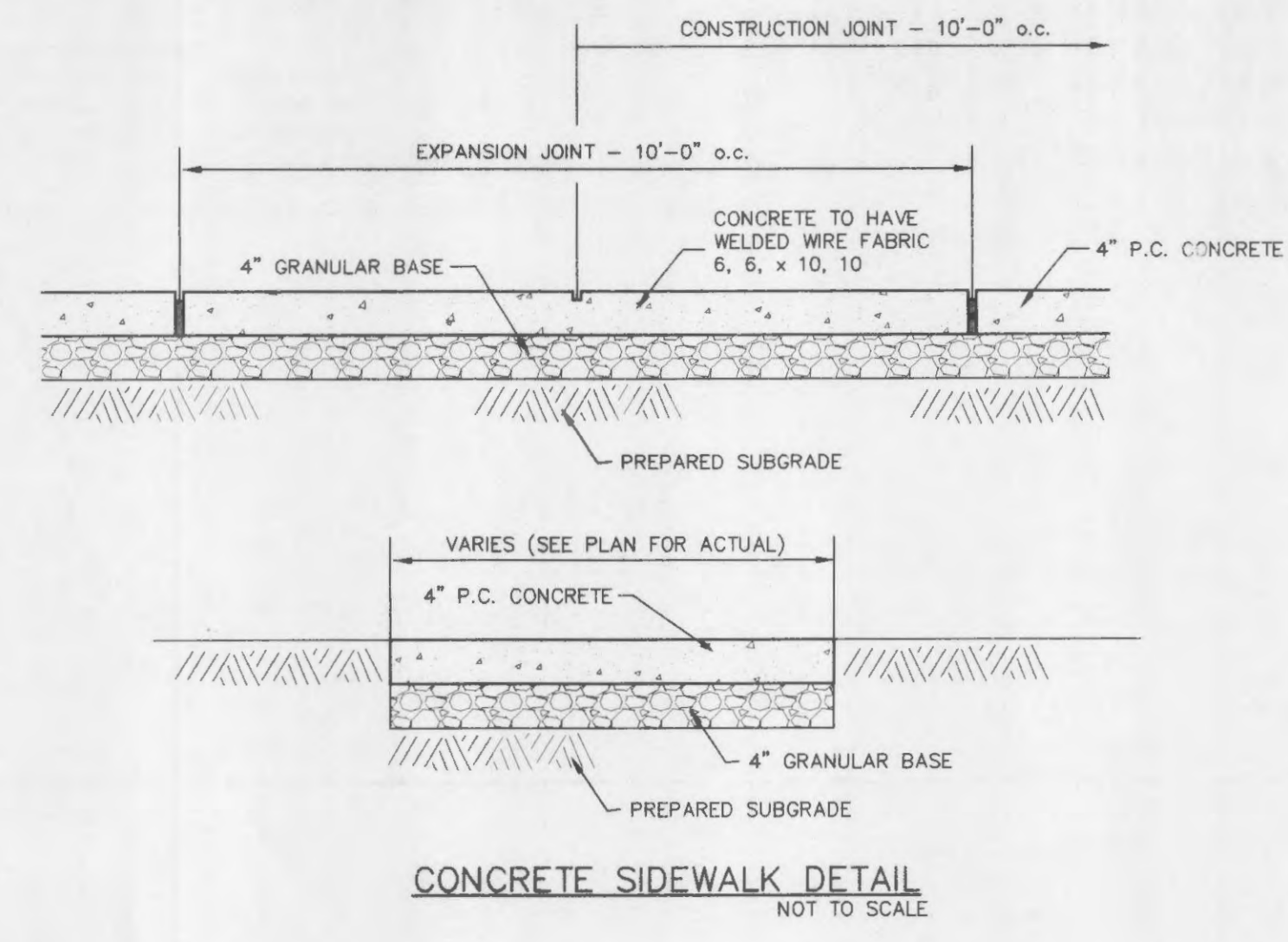


STANDARD SIGN FACE, STANDARD HIGHWAY DEPARTMENT, OR CITY STREET DEPARTMENT GAUGE, LETTERS AND BORDERS ARE GREEN, THE HANDICAP LOGO SQUARE IS BLUE AND THE BACKGROUND IS WHITE, GALVANIZED U CHANNEL POST 8'-0" LONG, SET 3'-0" INTO GRADE, SET BOTTOM OF SIGN 5'-0" ABOVE FINISHED GRADE.

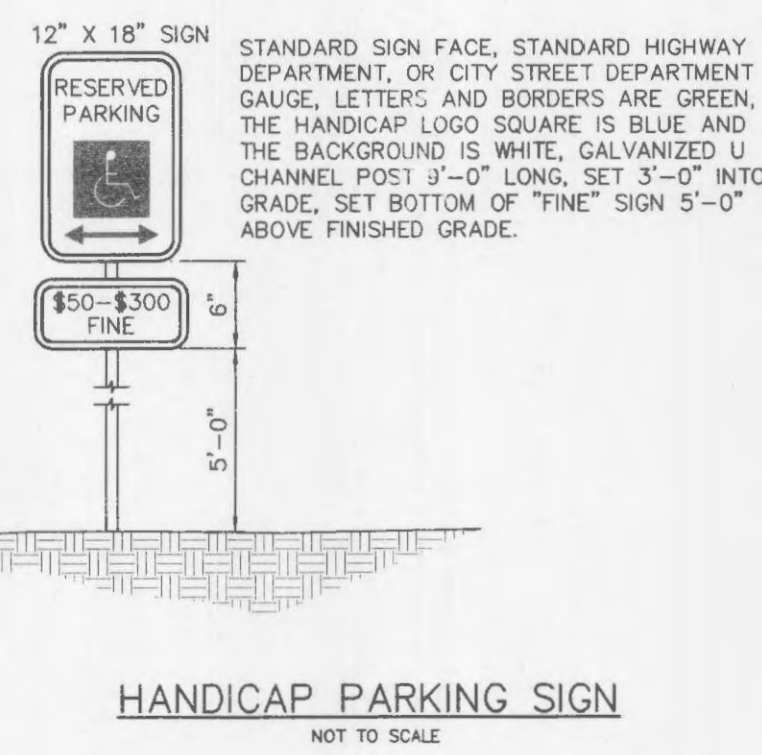
**VAN ACCESSIBLE HANDICAP PARKING SIGN**



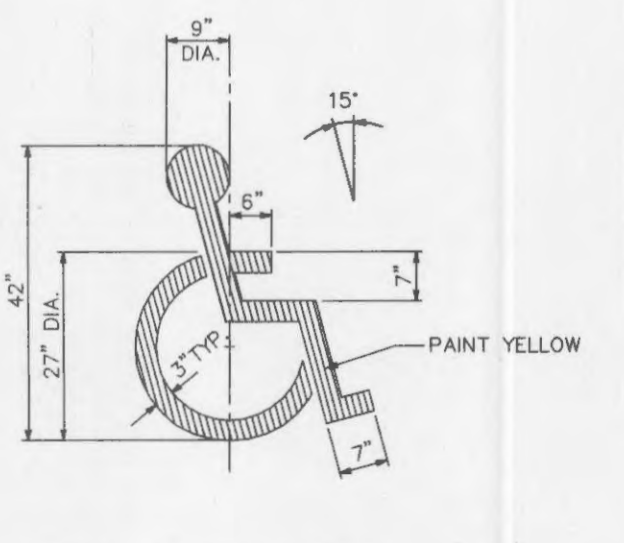
**STABILIZED CONSTRUCTION ENTRANCE/WASHDOWN AREA**  
 NOT TO SCALE



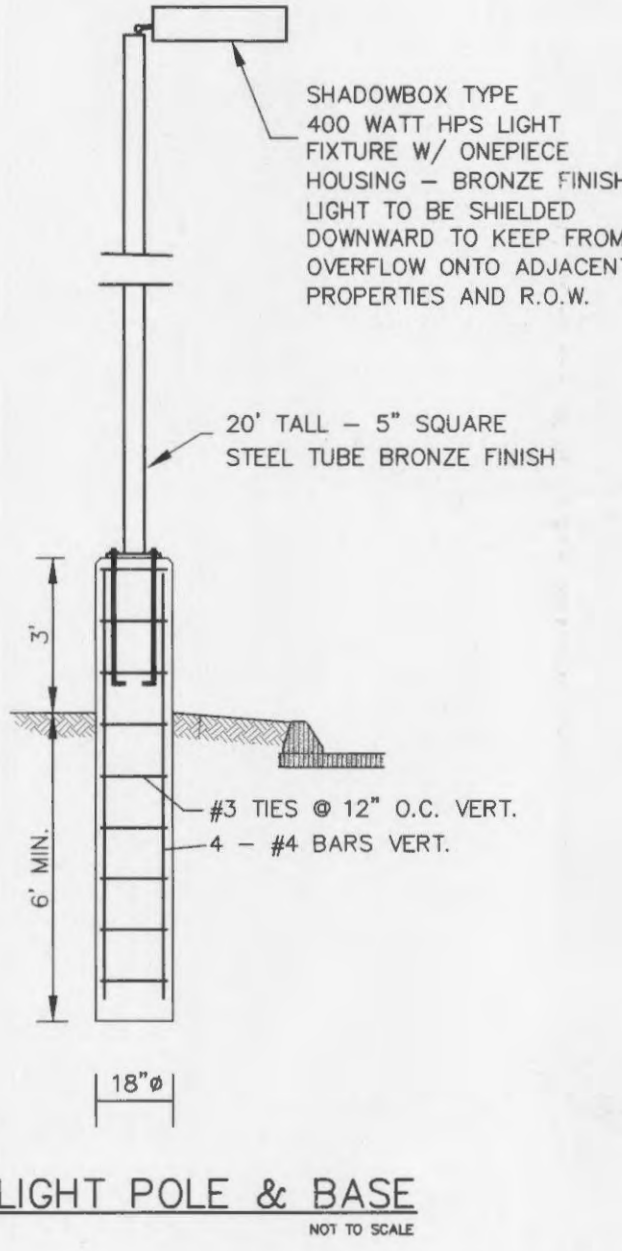
**BUILDING MOUNTED LIGHT**  
 NOT TO SCALE



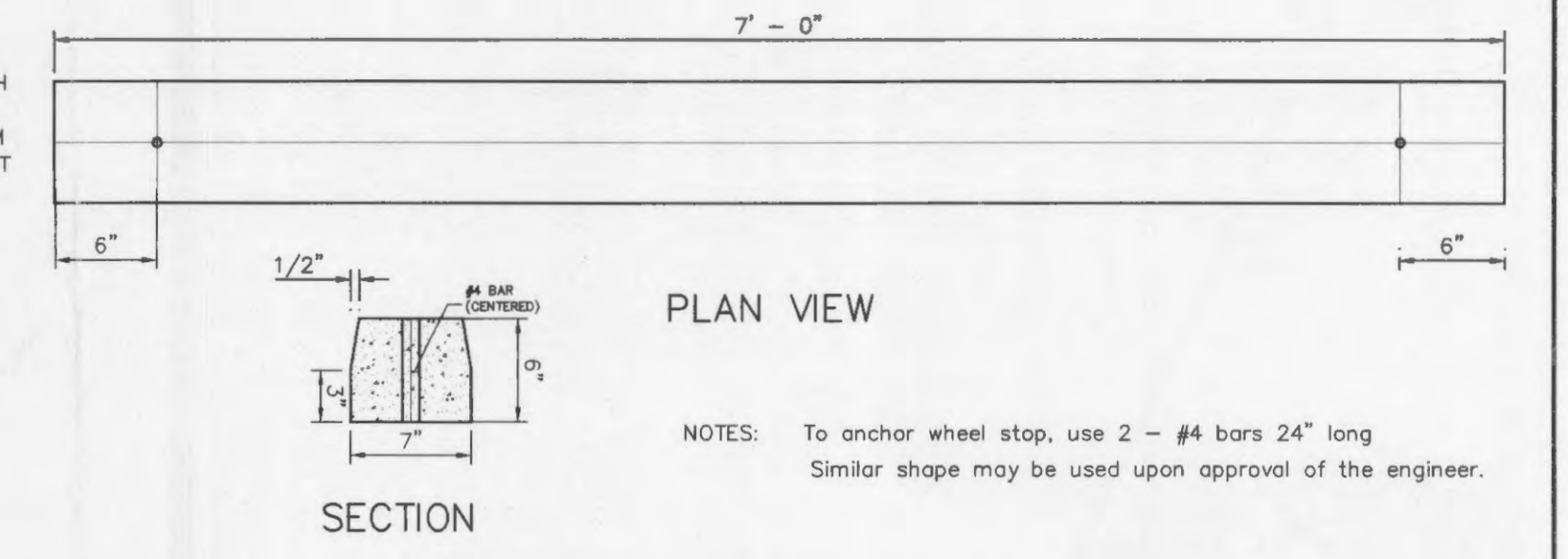
**HANDICAP PARKING SIGN**  
 NOT TO SCALE



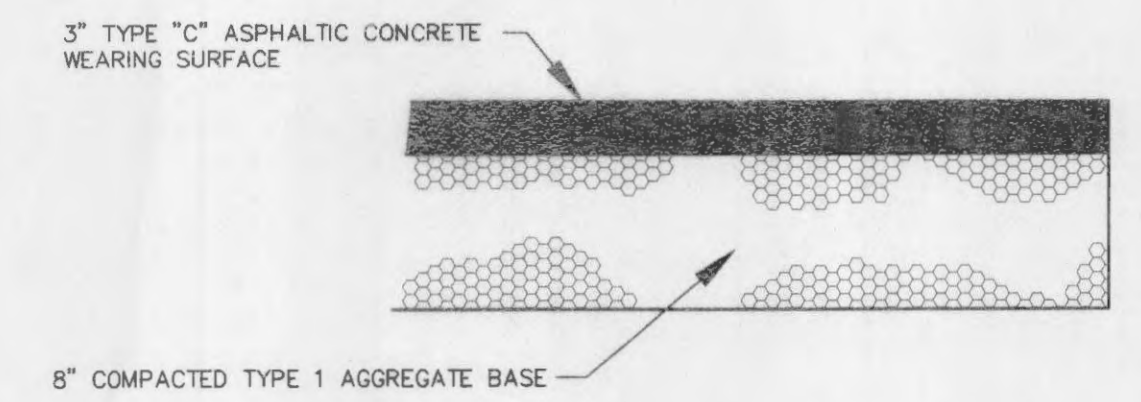
**PAINTED HANDICAPPED PARKING SYMBOL**  
 NOT TO SCALE



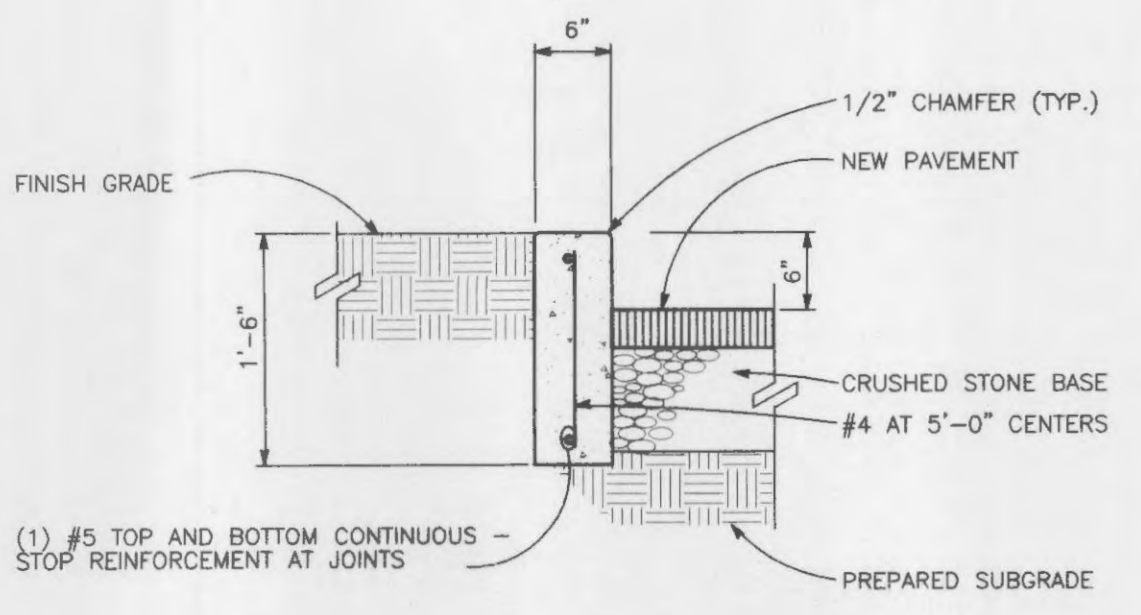
**LIGHT POLE & BASE**  
 NOT TO SCALE



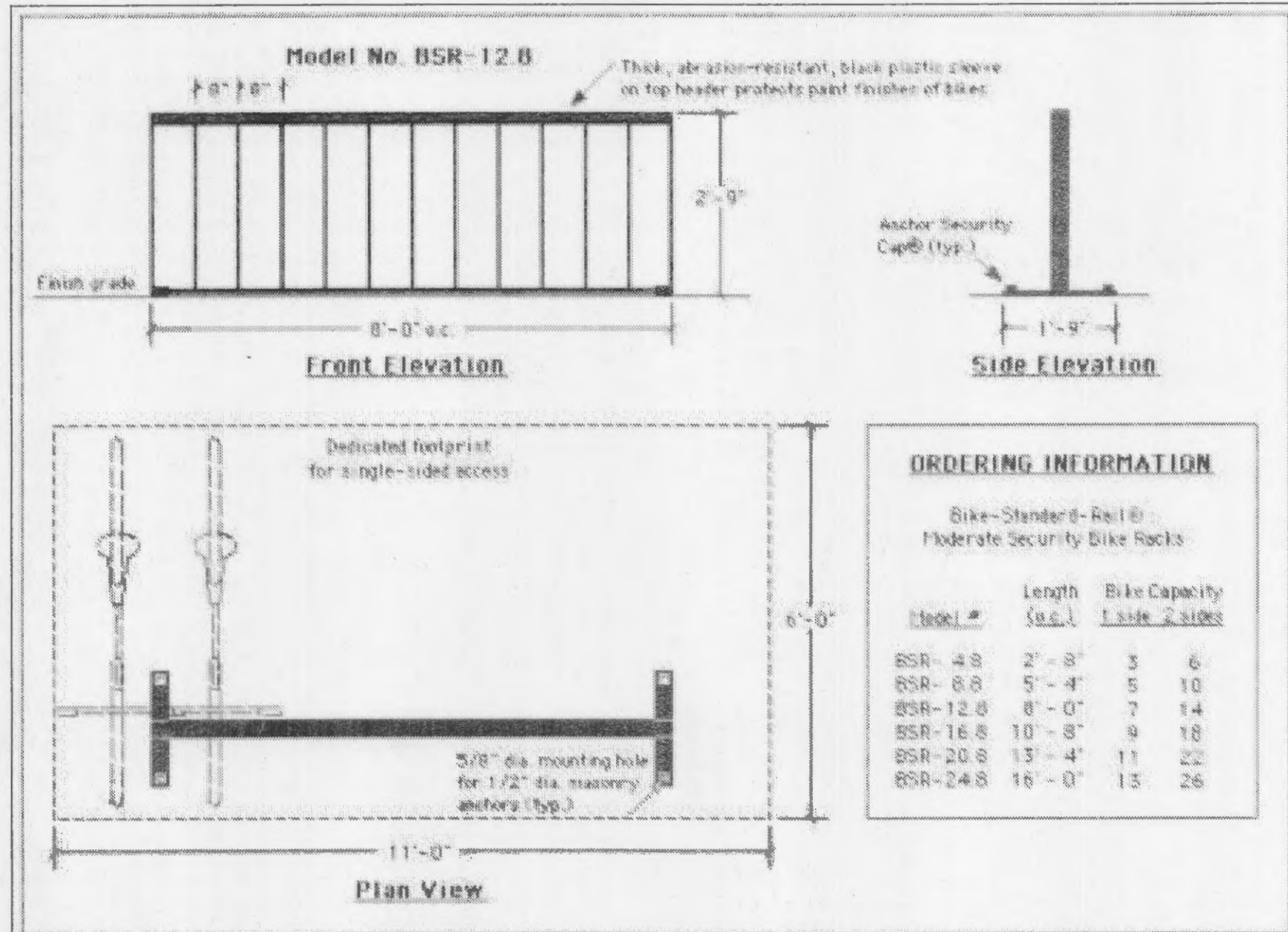
**PRECAST CONCRETE WHEELSTOP**



**ASPHALT PAVEMENT DETAIL**  
 NOT TO SCALE



**CONCRETE CURB DETAIL**  
 NOT TO SCALE

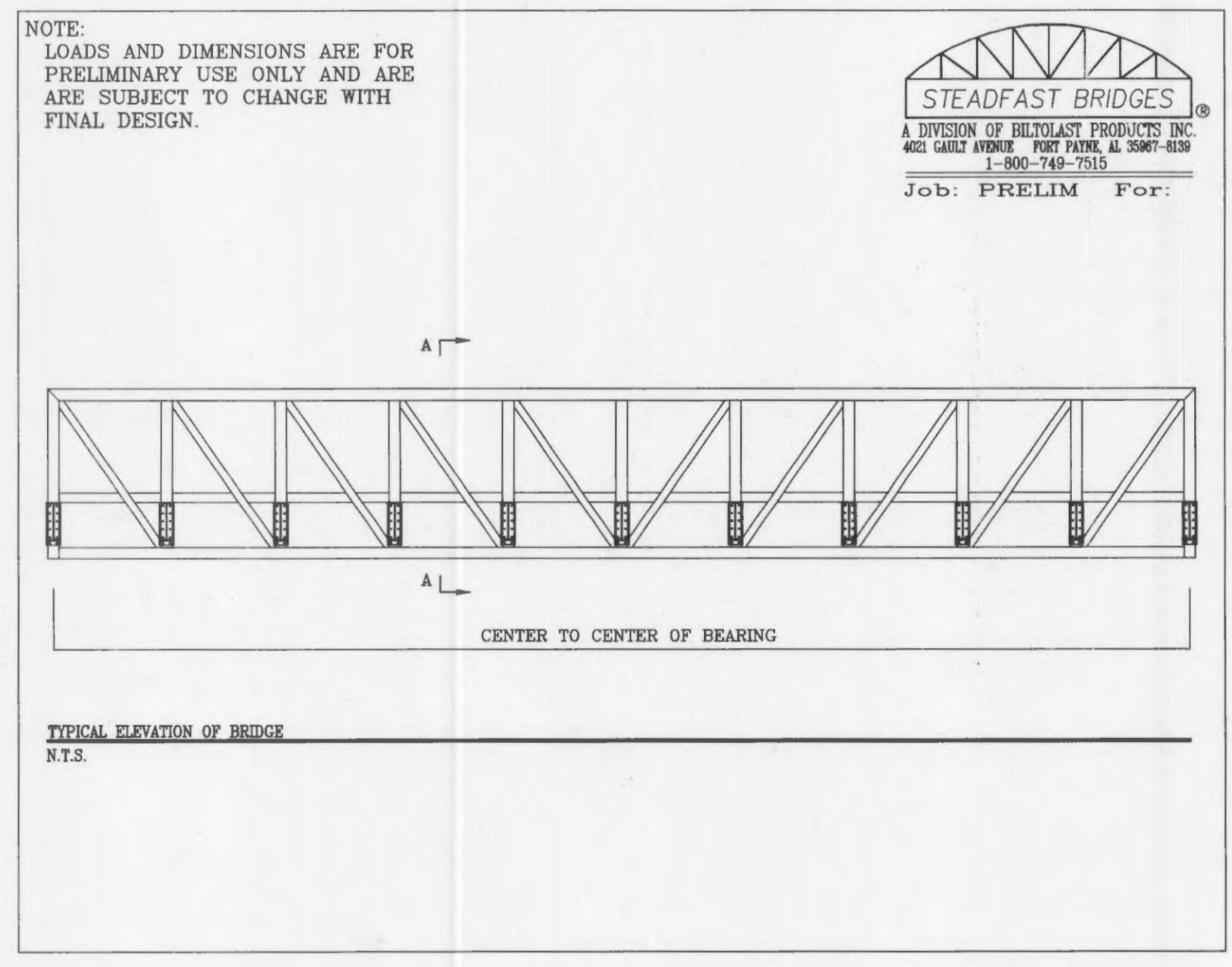


**BIKE RACK DETAIL (OR EQUIVALENT)**  
 NOT TO SCALE

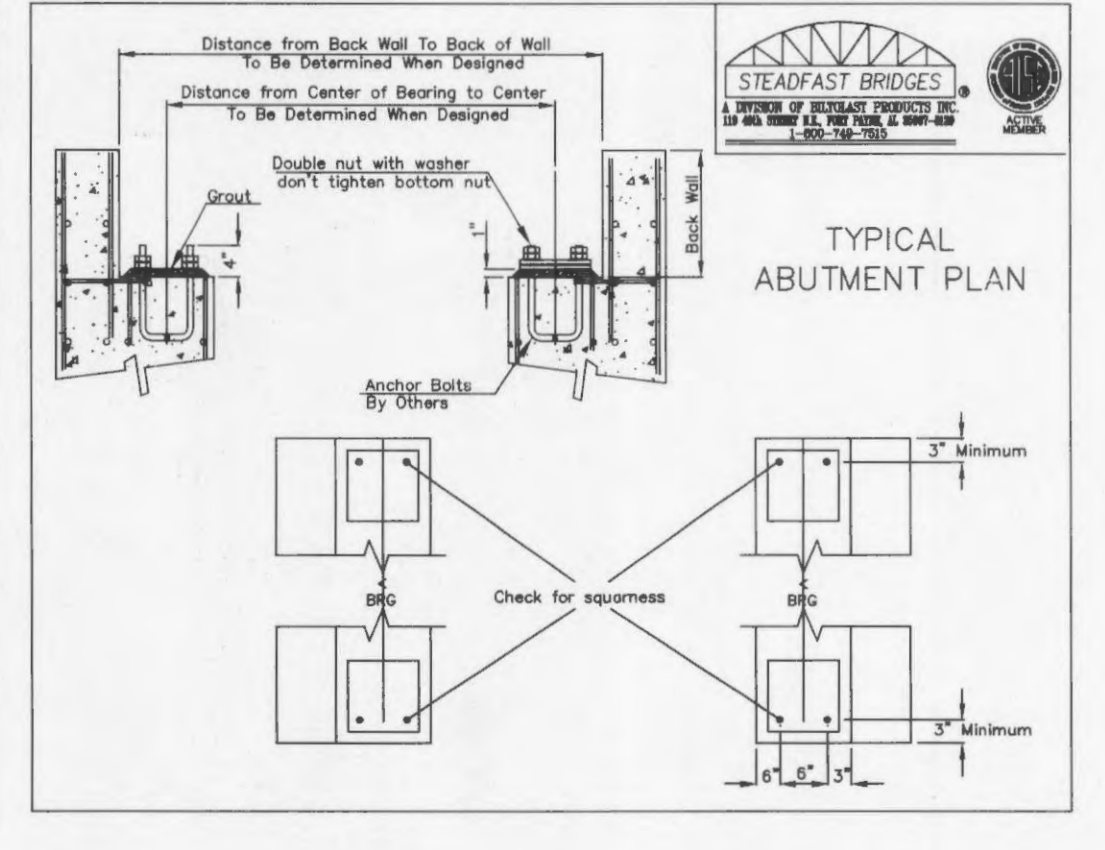
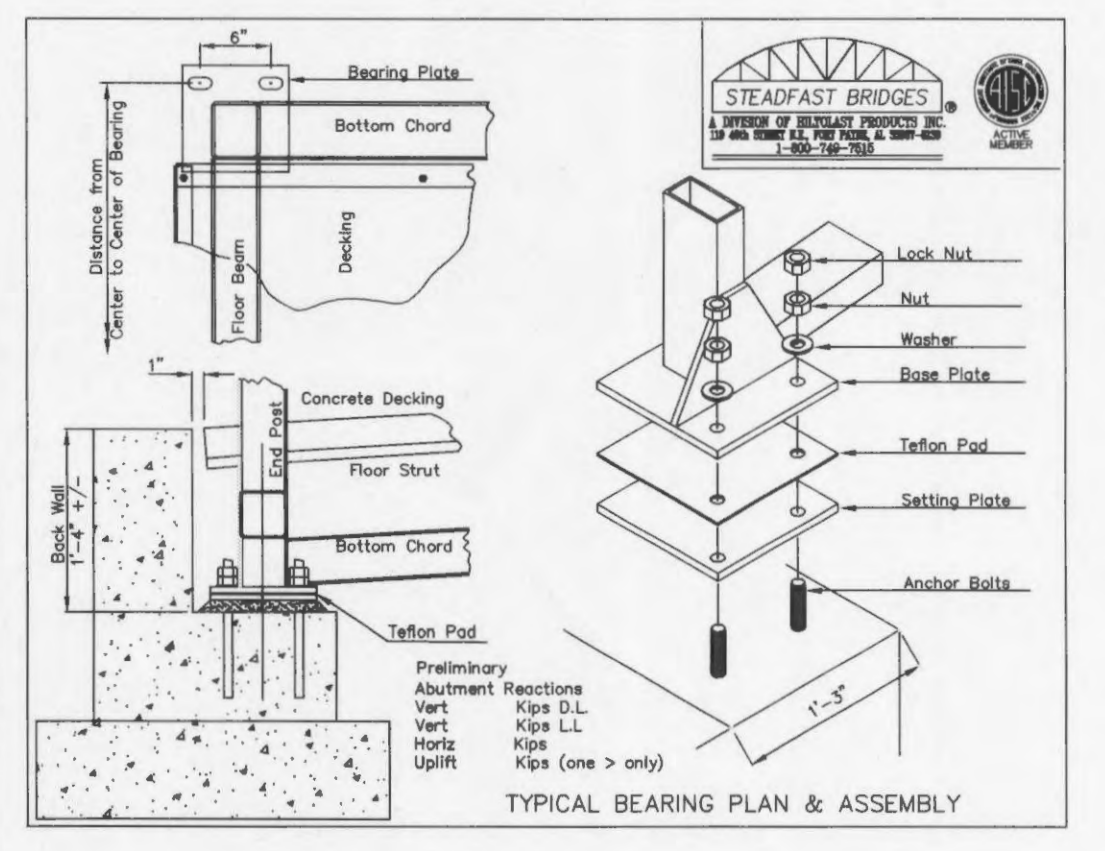
**ORDERING INFORMATION**

Bike-Standard-Rail® Moderate Security Bike Racks

Model #	Length (ft.)	Bike Capacity
BSR-4.8	2'-8"	3
BSR-6.8	5'-4"	5
BSR-12.8	8'-0"	7
BSR-16.8	10'-8"	9
BSR-20.8	13'-4"	11
BSR-24.8	16'-0"	13



**STEADFAST PEDESTRIAN BRIDGE DETAIL (OR EQUIVALENT)**  
 NOT TO SCALE



**STEADFAST PEDESTRIAN BRIDGE DETAIL (OR EQUIVALENT)**  
 NOT TO SCALE