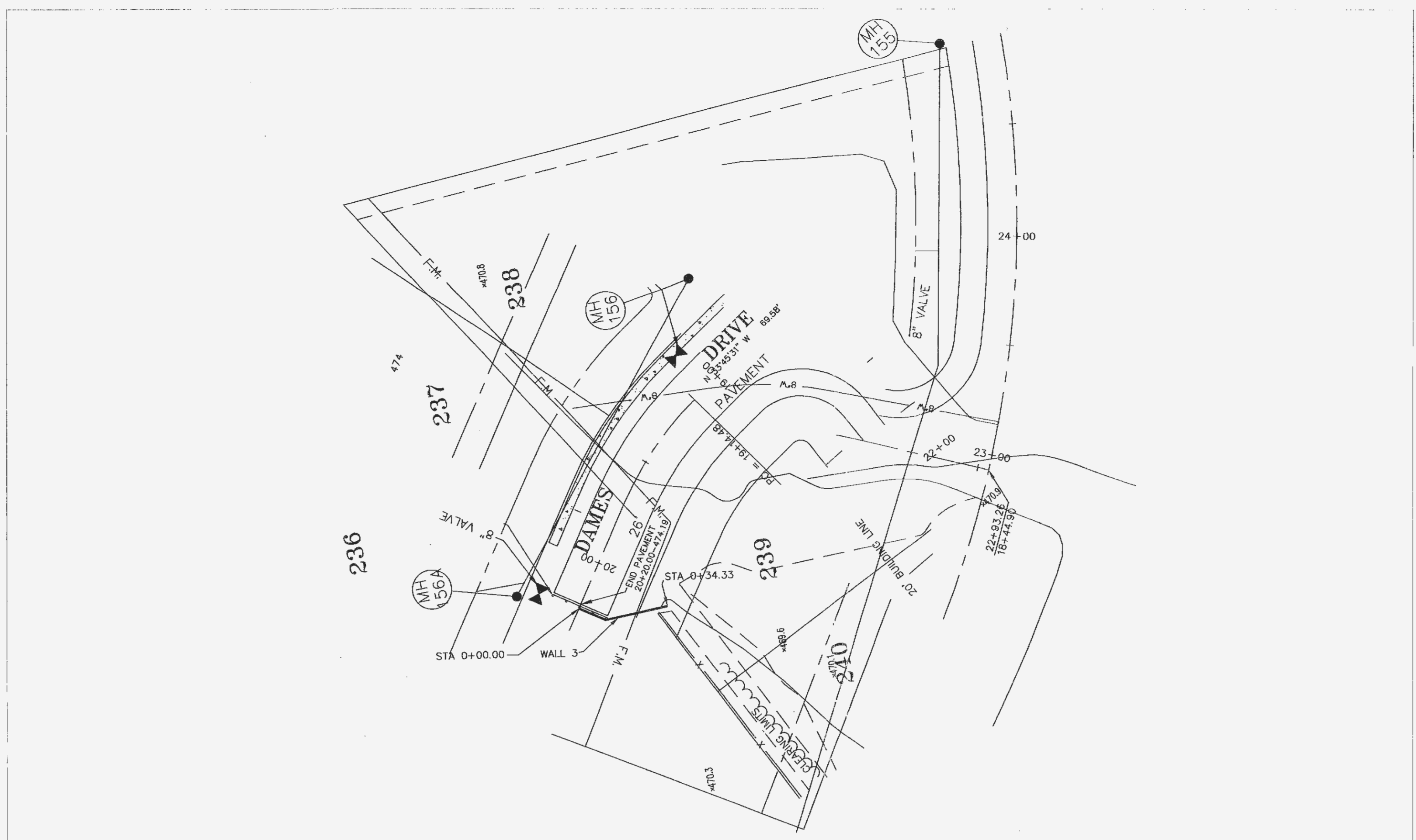
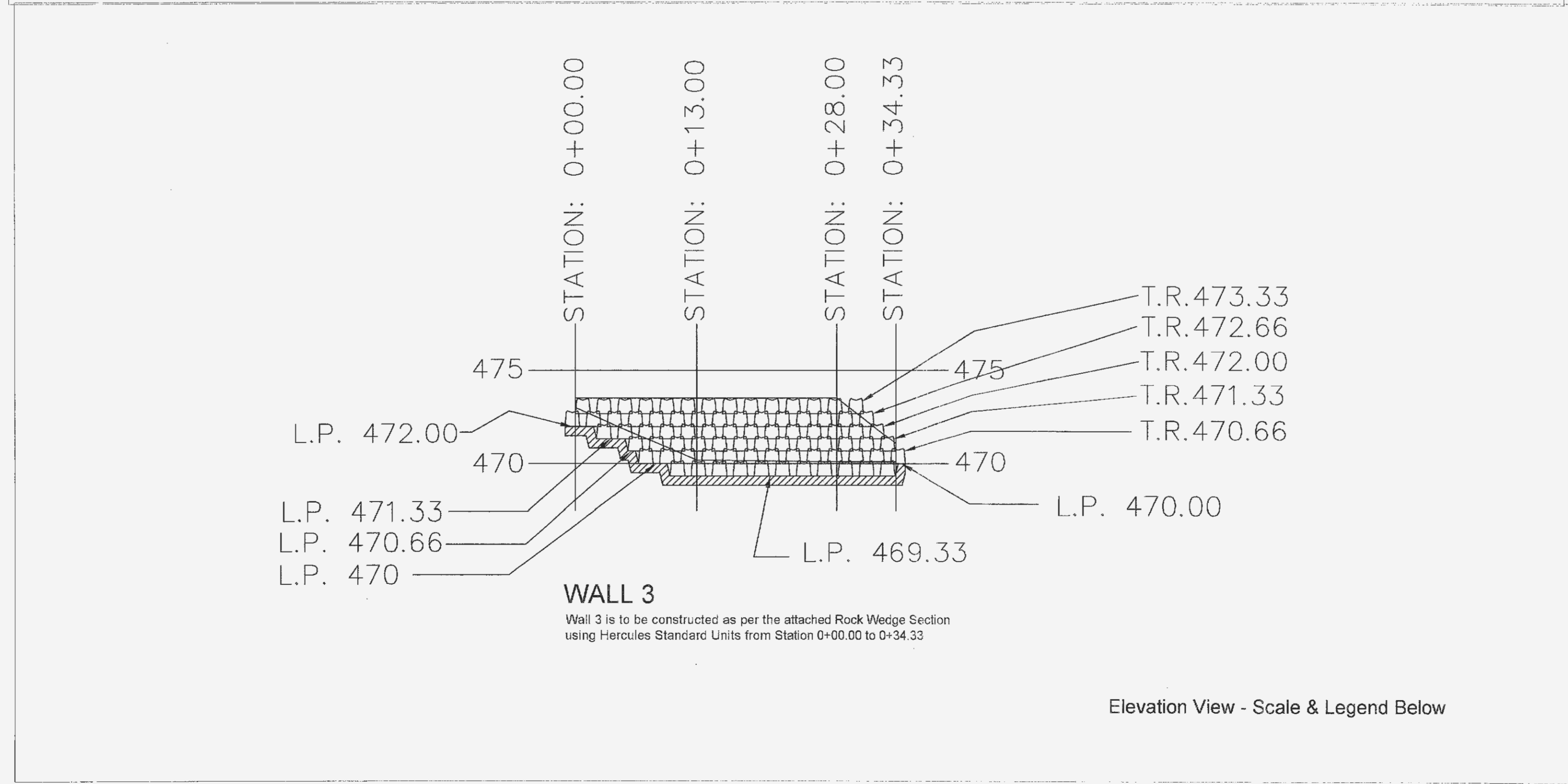


RECEIVED  
 DEC 01 2005  
 ENGINEER



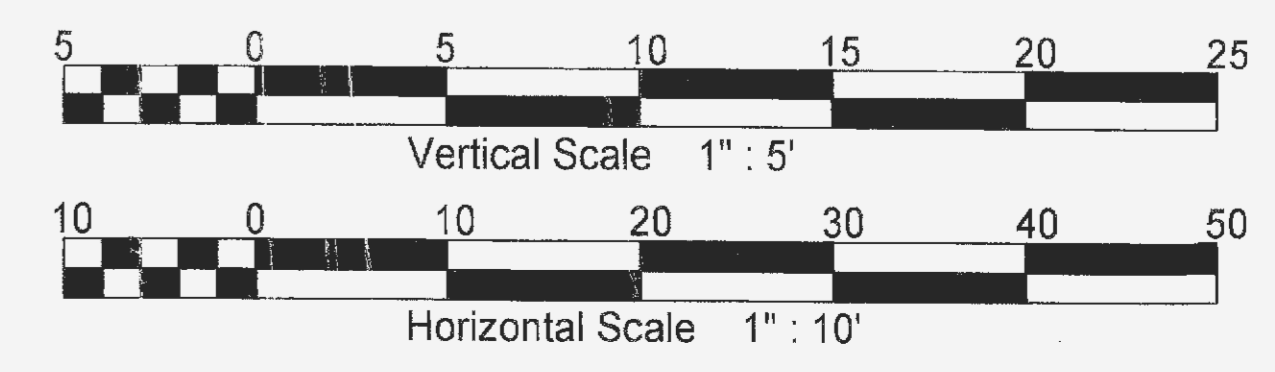
Orientation View - Not To Scale



Elevation View - Scale & Legend Below

**NOTE:**  
 To prevent damage to the walls during site development, all surface drainage should be directed away from the walls. Excess water during heavy rain events, if not drained properly can cause washouts at wall ends and 'blowouts' of interior sections. These precautions should be taken during wall construction, and after, until the final site drainage, landscaping and paving are complete.

- LEGEND**
- Crushed Rock Leveling Pad
  - Hercules Unit (as specified)
  - Proposed Grade



1/3/06  
 Inspector Copy  
**APPROVED**  
 ASK

STATE OF MISSOURI  
 JOHN E. SHIVELY  
 NUMBER  
 E-24948  
 REGISTERED PROFESSIONAL ENGINEER

*John E. Shively*  
 11-28-2005

Project Number	Issue Date	Design By	Drawn By	Checked By
	11/09/05			