

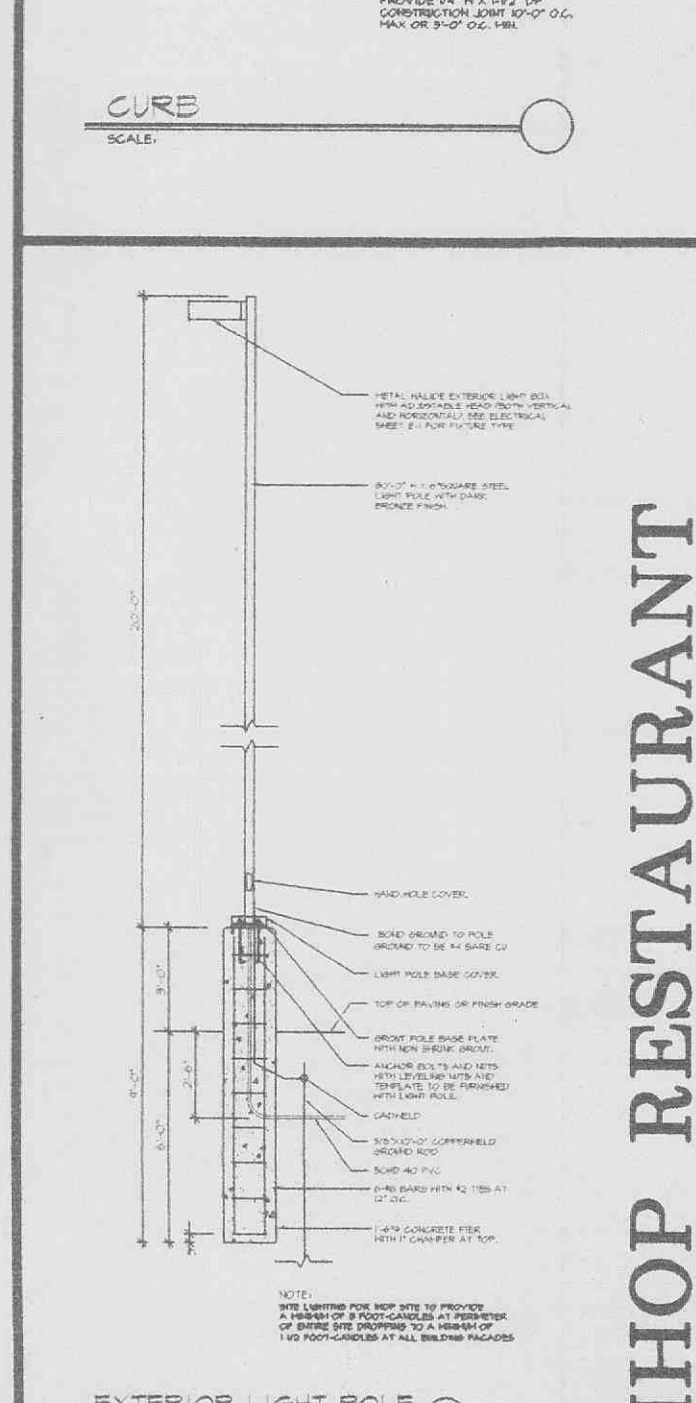
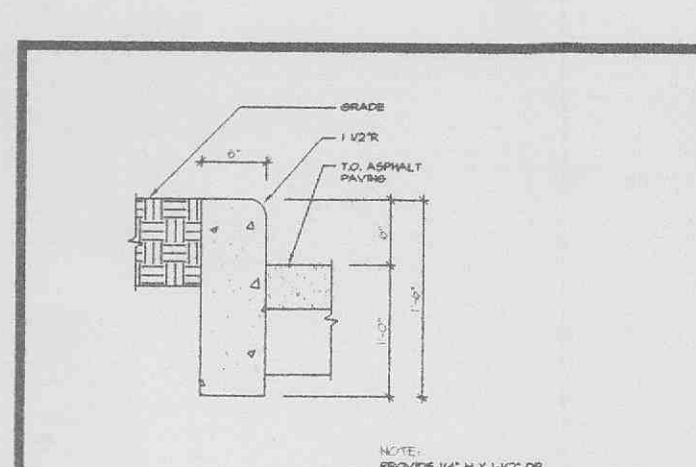
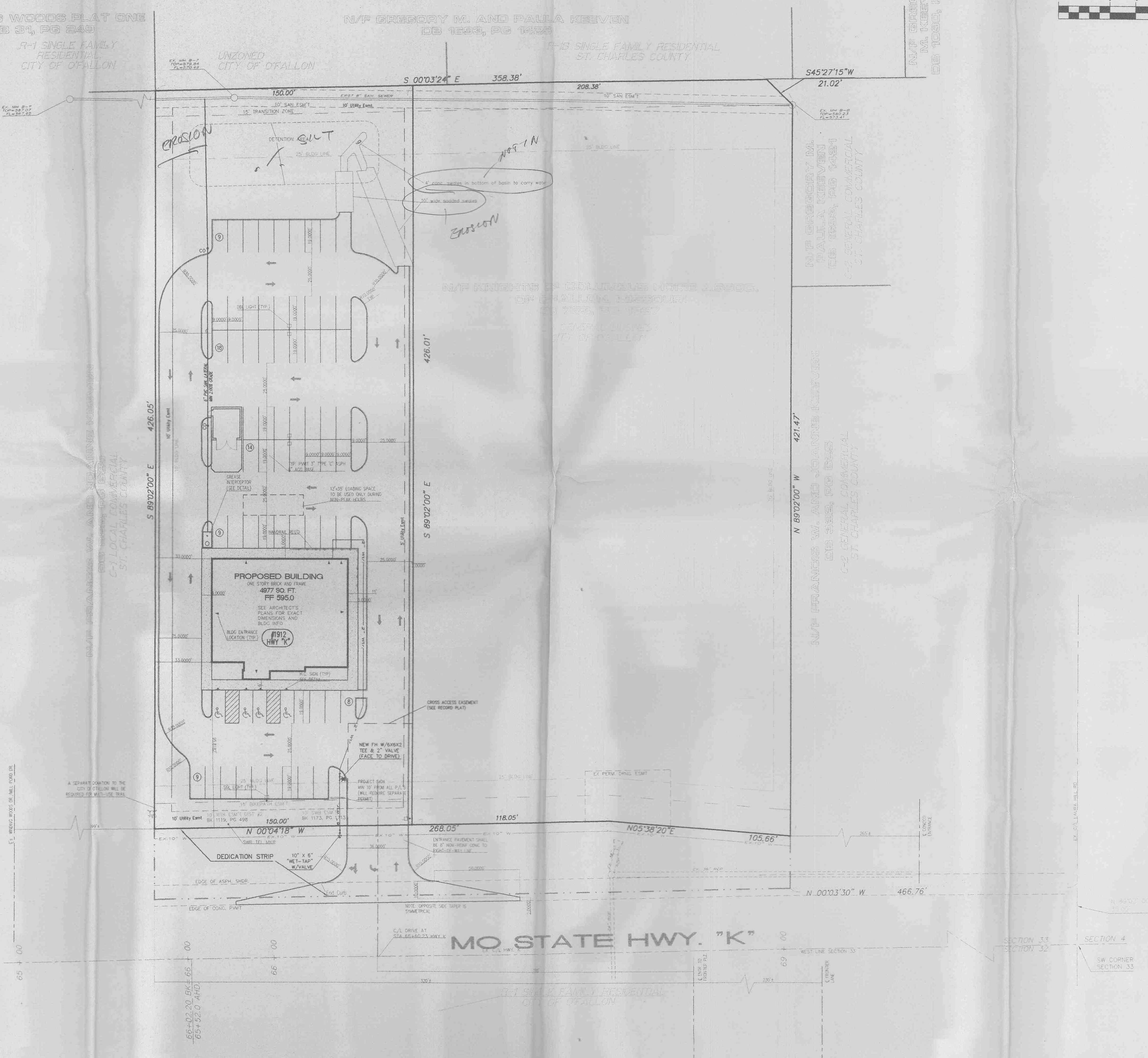
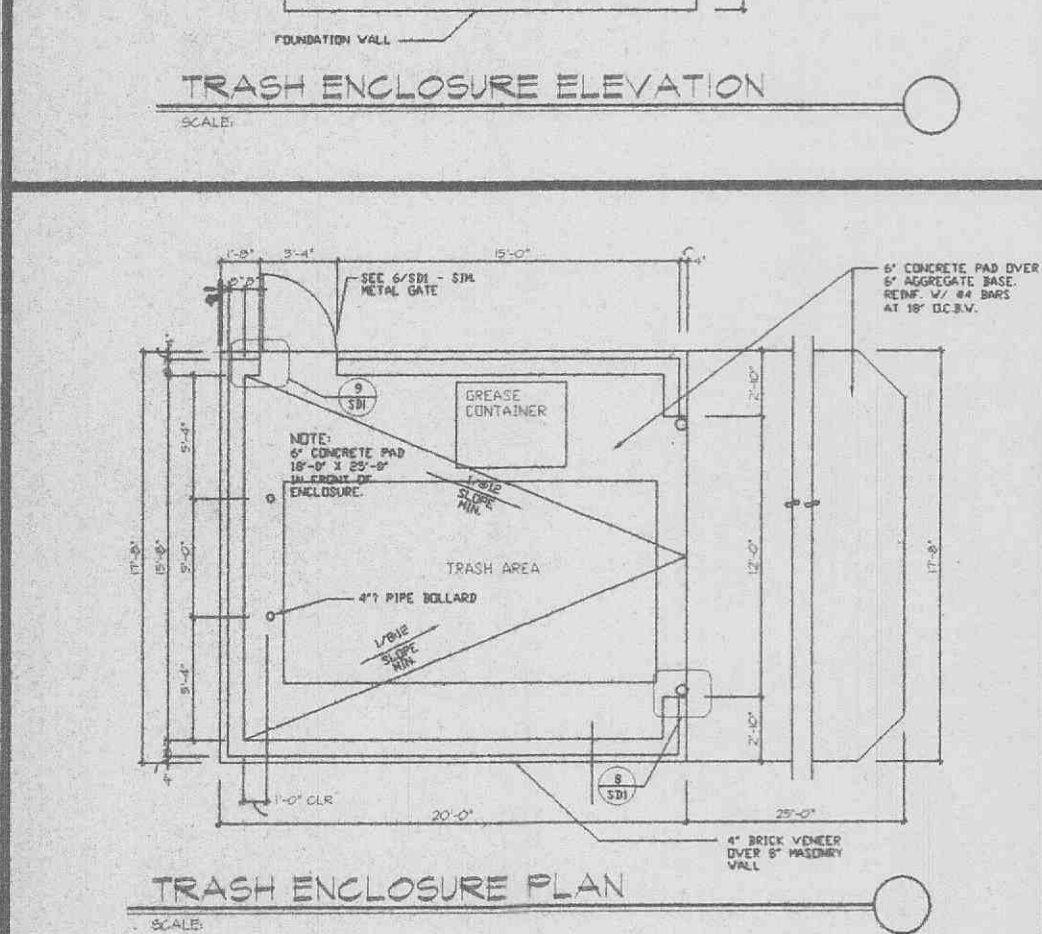
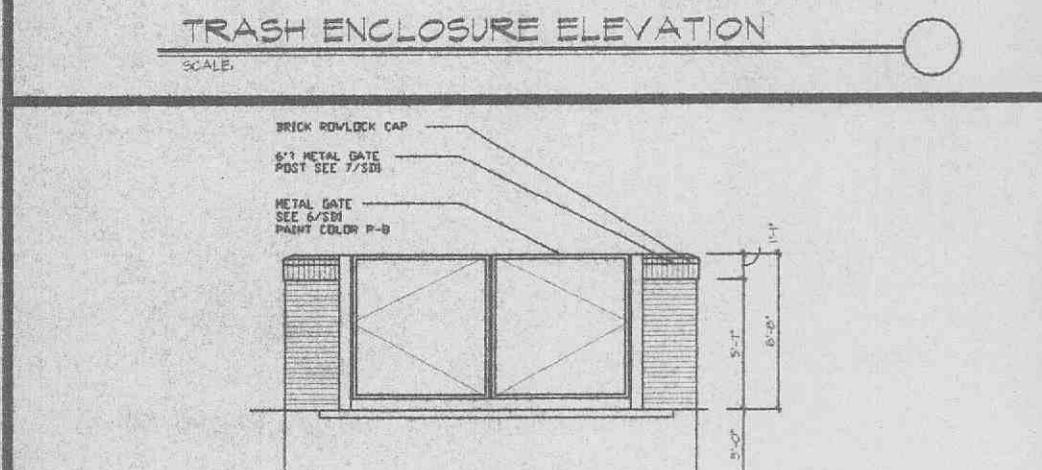
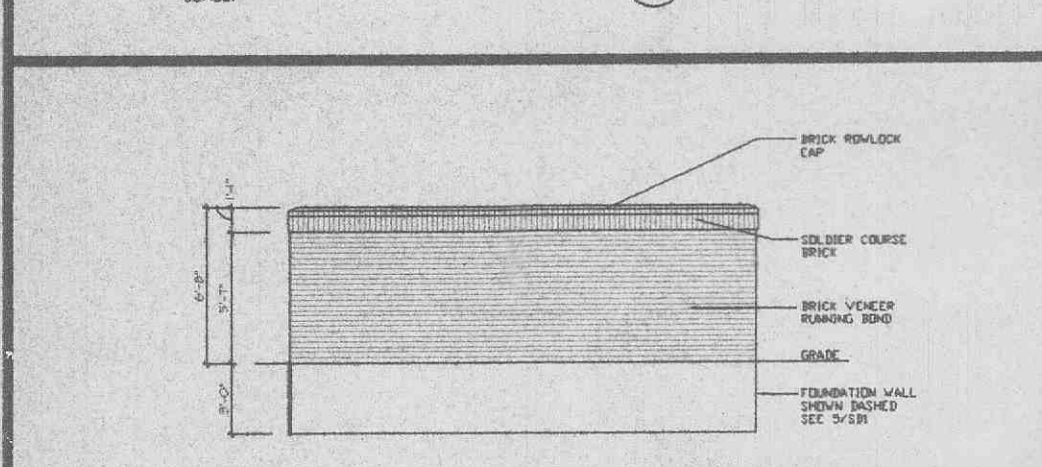
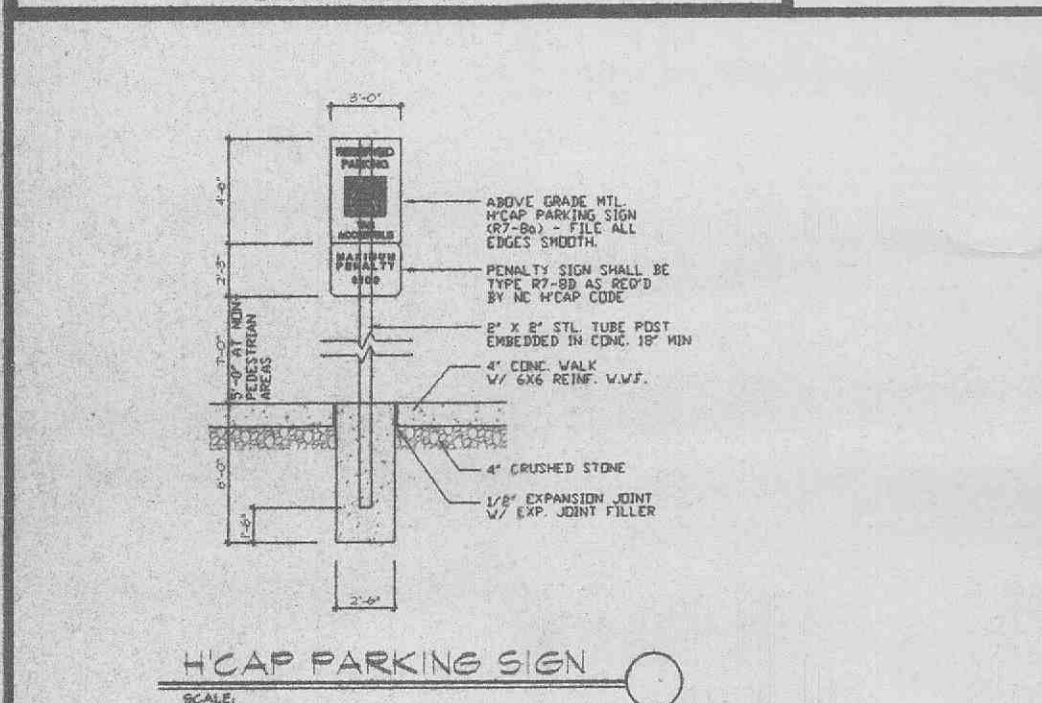
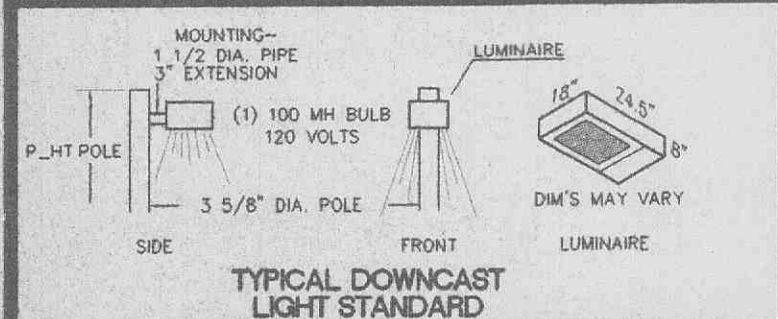
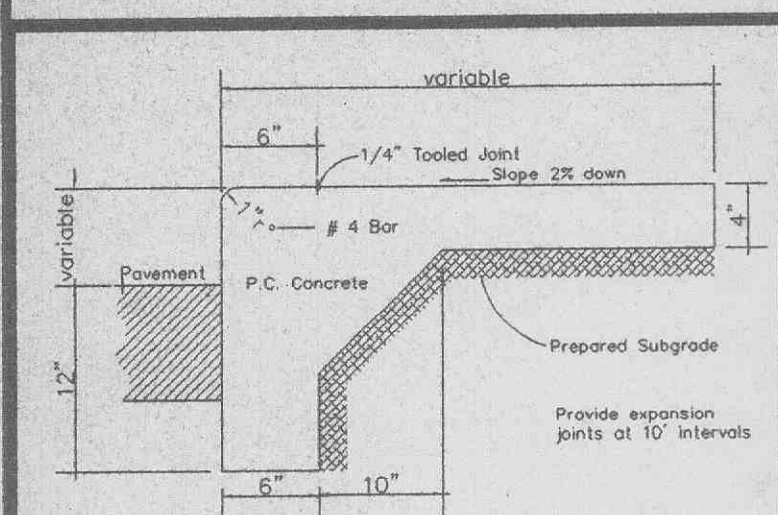
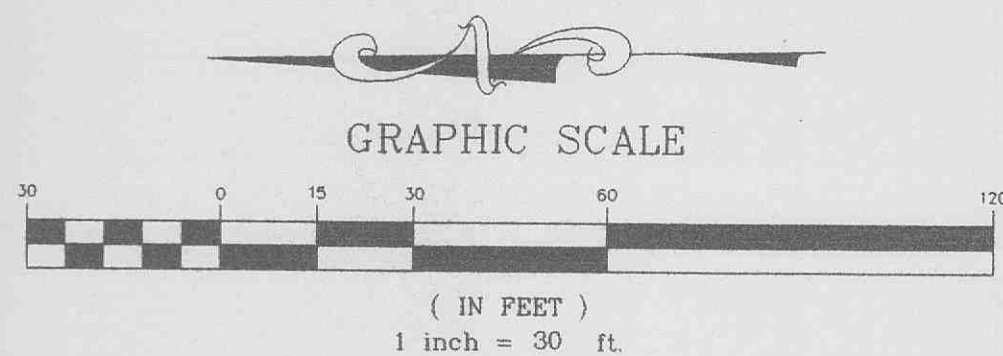
WINDING WOODS PLAT ONE
PG 34, PG 243

R-1 SINGLE FAMILY
RESIDENTIAL
CITY OF O'FALLON

N/F GREGORY M. AND PAULA KEEVEN
DB 1233, PG 1435

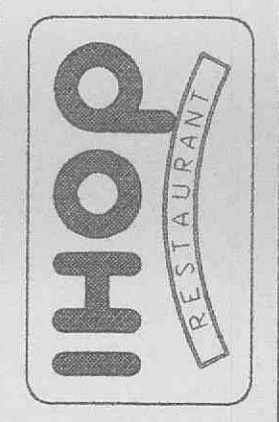
R-19 SINGLE FAMILY RESIDENTIAL
ST. CHARLES COUNTY

N/F GREGORY
M. KEEVEN
DB 1030, PG 577



Revisions per O'Fallon
Add Detention Area
3/6/98
3/23/98

INTERNATIONAL HOUSE OF PANCAKES



ST. CHARLES ENGINEERING & SURVEYING
801 S. FIFTH STREET, SUITE 202
ST. CHARLES, MO 63301
TEL(314) 947-0607 FAX(314) 947-2448

SIC
FIS

ORDER NO.
97-1342-01
DATE
02/10/98
2 of 6

IHOP RESTAURANT
FLAT PLAN