

WINDING WOODS FLAT ONE  
PB 31, PG 248

R-1 SINGLE FAMILY  
RESIDENTIAL  
CITY OF OFFALLO

N/P GREGORY M. AND PAULA KEEVEN  
DB 1633, PG 1485

R-1B SINGLE FAMILY RESIDENTIAL  
ST. CHARLES COUNTY

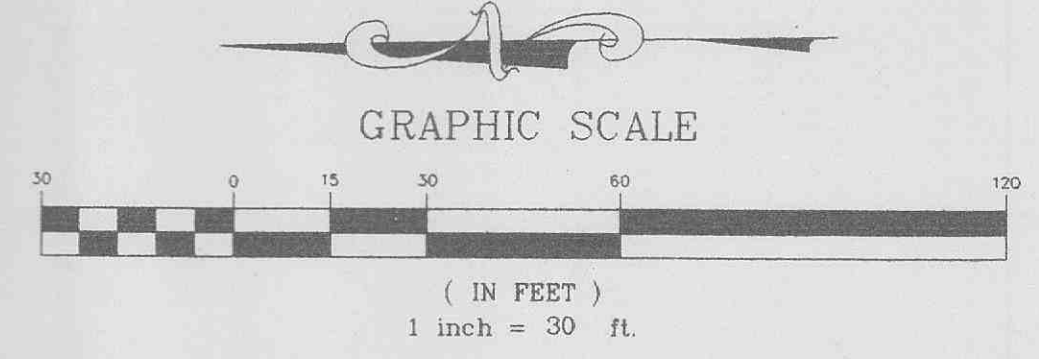
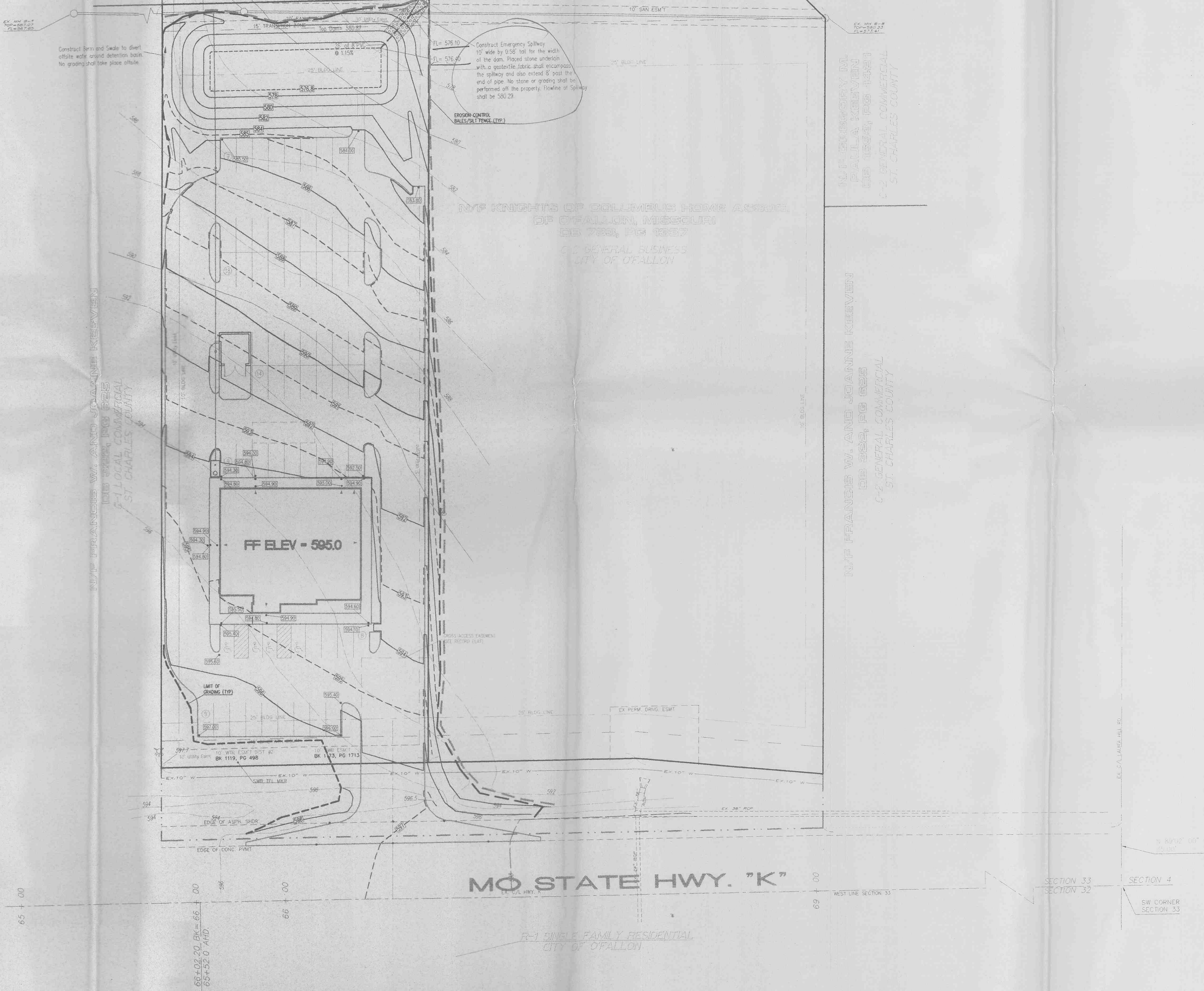
N/P GREGORY  
M. KEEVEN  
DB 1633, PG 1485

N/P GREGORY M.  
PAULA KEEVEN  
DB 1633, PG 1485  
C-2 GENERAL COMMERCIAL  
ST. CHARLES COUNTY

N/P FRANCIS W. AND JOANNE KEEVEN  
DB 822, PG 826  
C-2 GENERAL COMMERCIAL  
ST. CHARLES COUNTY

N/P KNIGHTS OF BOLLINGBROS HOME ASSOC.  
OF OFFALLO, MISSOURI  
DB 799, PG 1887  
C-2 GENERAL BUSINESS  
CITY OF OFFALLO

N/P FRANCIS W. AND JOANNE KEEVEN  
DB 822, PG 826  
C-1 LOCAL COMMERCIAL  
ST. CHARLES COUNTY



Revised 5/23/98

INTERNATIONAL HOUSE OF PANCAKES



ST. CHARLES ENGINEERING & SURVEYING  
801 S. FIFTH STREET, SUITE 202  
ST. CHARLES, MO 63301  
TEL(814) 947-0607 FAX(814) 947-2448

IHOP RESTAURANT

S C  
F S

ORDER NO.  
97-1842-01  
DATE  
02/10/98

GRADING PLAN

3 of 6