

WINDING WOODS FLAT ONE  
PB 31, PG 249  
R-1 SINGLE FAMILY  
RESIDENTIAL  
CITY OF OFALLON

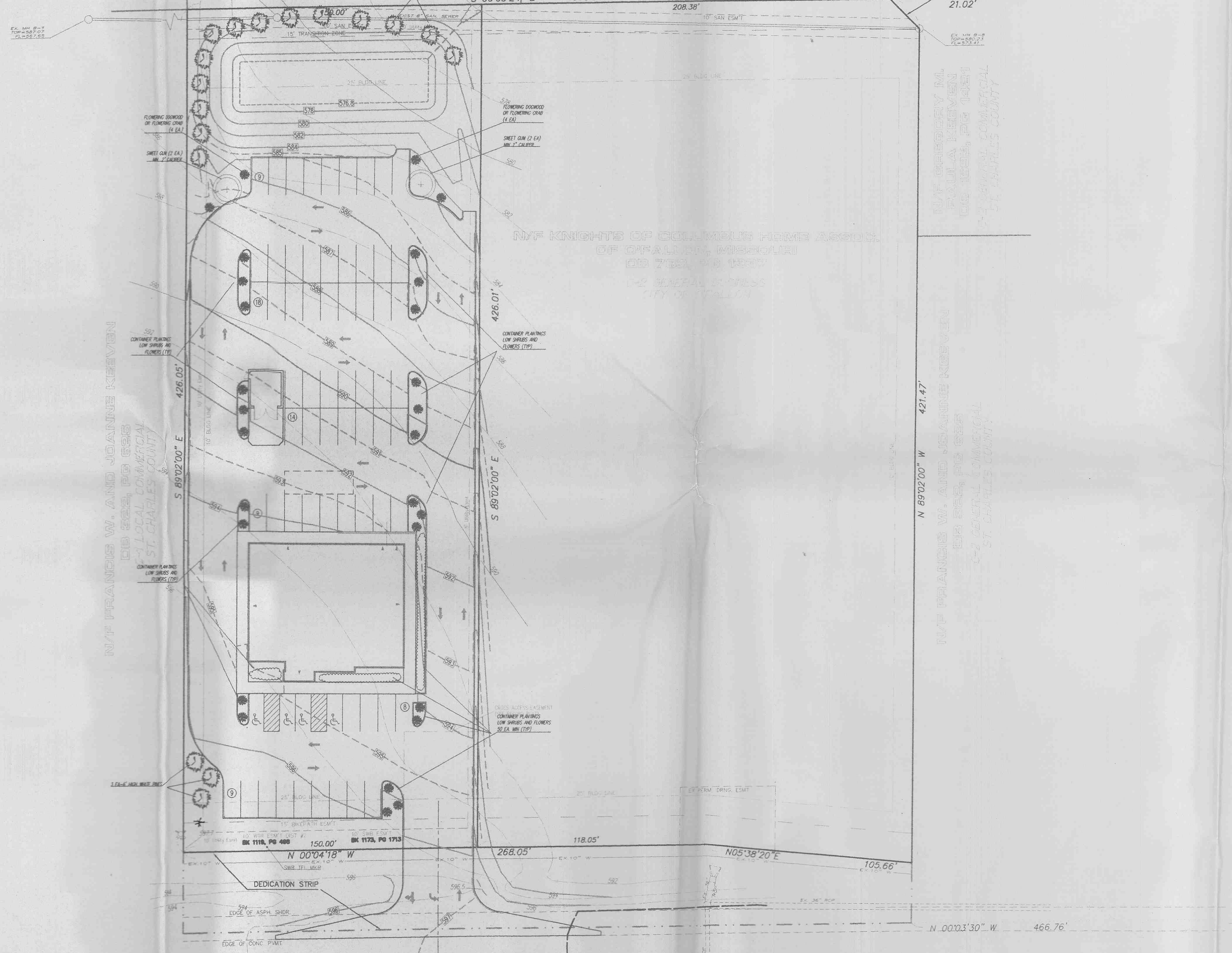
N/F GREGORY M. AND PAULA KEEVEN  
DB 1532, PG 1425

R-1B SINGLE FAMILY RESIDENTIAL  
ST. CHARLES COUNTY

S 00'03'24" E 358.38'

208.38'

S45'27'15" W 21.02'



N/F FRANCIS W. AND JOANNE KEEVEN  
DB 522, PG 628  
C-1 LOCAL COMMERCIAL  
ST. CHARLES COUNTY

N/F KNIGHTS OF COLUMBUS HOME ASSO.  
OF OFALLON, MISSOURI  
DB 722, PG 1557  
C-2 GENERAL COMMERCIAL  
CITY OF OFALLON

N/F GREGORY M.  
PAULA KEEVEN  
DB 1532, PG 1425  
C-2 GENERAL COMMERCIAL  
ST. CHARLES COUNTY

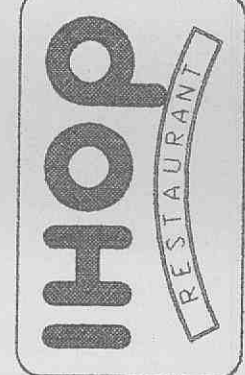
N/F FRANCIS W. AND JOANNE KEEVEN  
DB 522, PG 628  
C-2 GENERAL COMMERCIAL  
ST. CHARLES COUNTY

MO STATE HWY. "K"

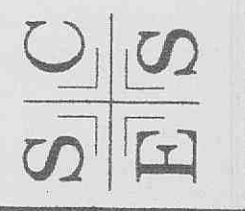
R-1 SINGLE FAMILY RESIDENTIAL  
CITY OF OFALLON

1/23/98 Added 3 Trees per Ofallon

INTERNATIONAL HOUSE OF PANCAKES



ST. CHARLES ENGINEERING & SURVEYING  
801 S. FIFTH STREET, SUITE 202  
ST. CHARLES, MO 63301  
TEL: (314) 947-0607 FAX: (314) 947-2448



ORDER NO.  
97-1342-01

DATE  
02/10/98

5 of 6

LANDSCAPE PLAN