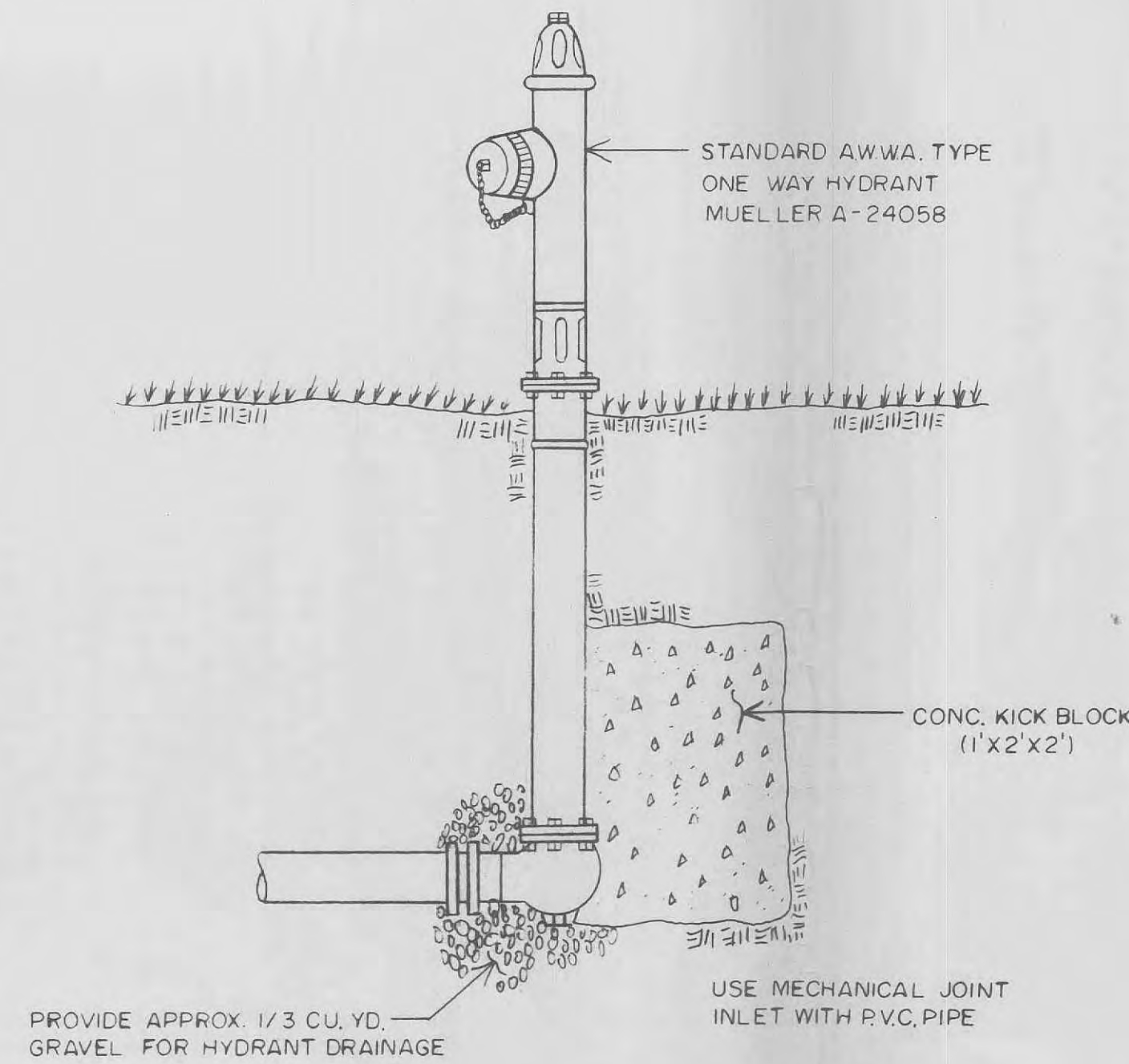
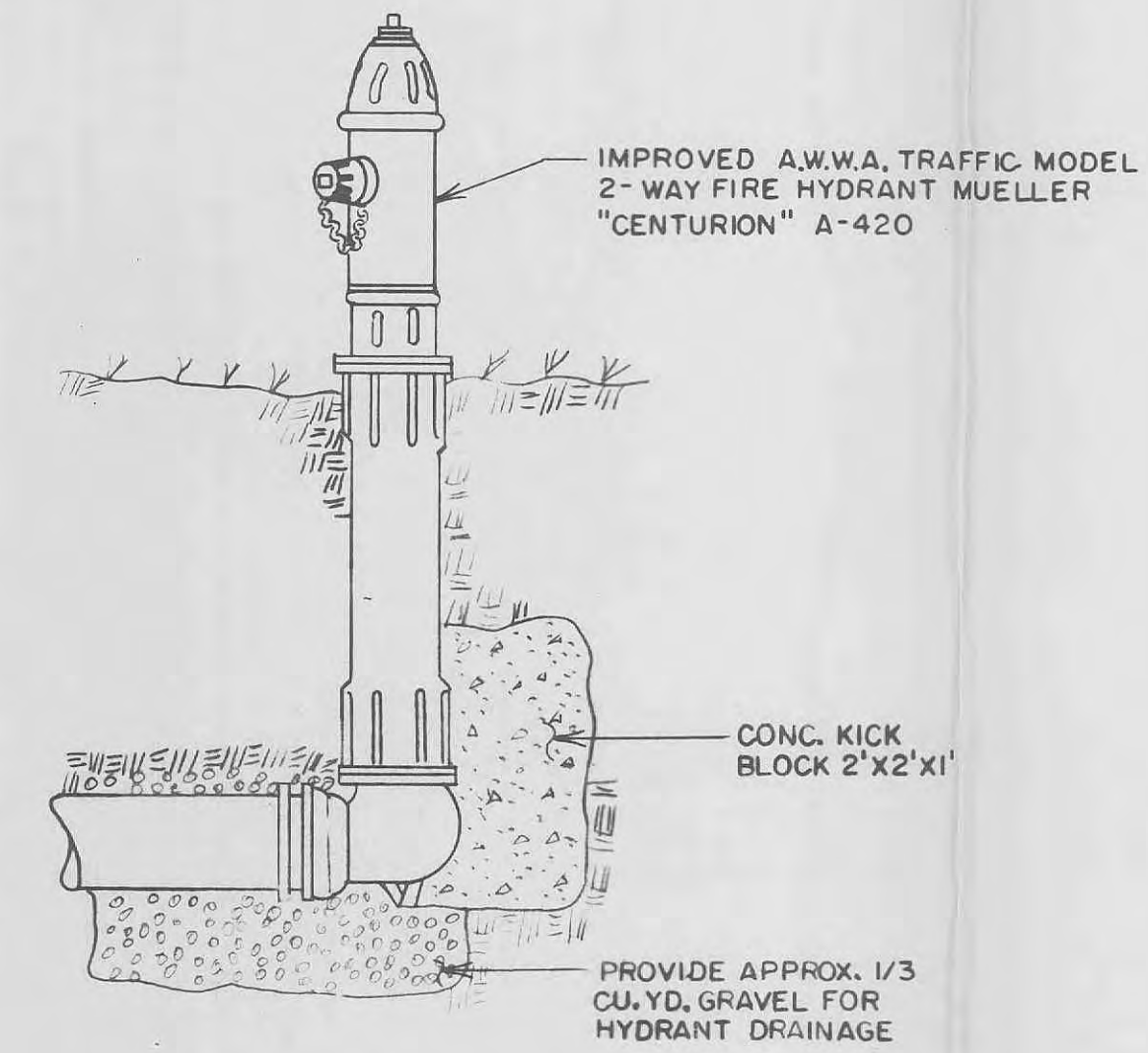


FIRE HYDRANT INSTALLATION DETAIL
NO SCALE

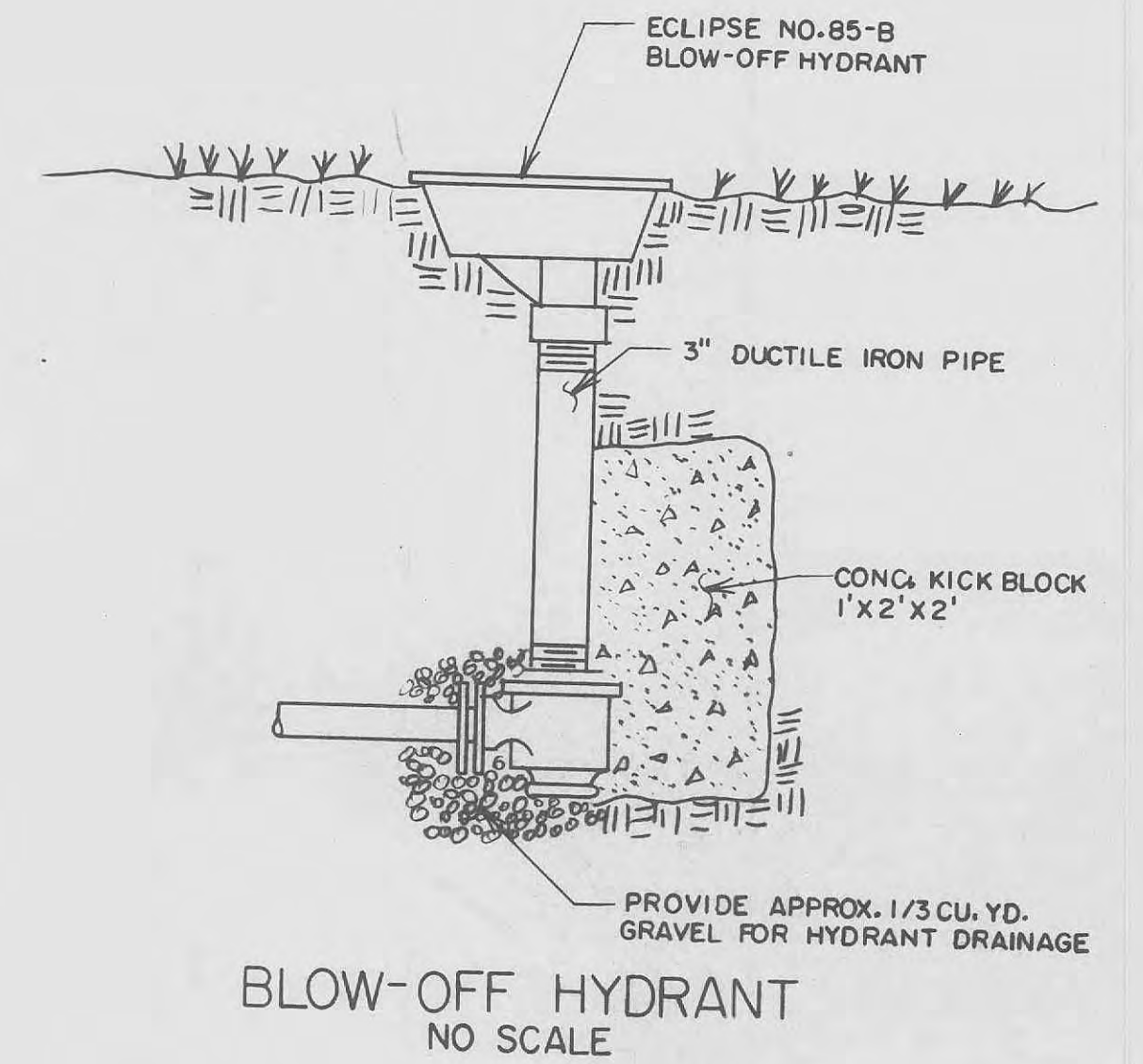
NOTE
FOR 6" W.M. AND LARGER
6" 3-WAY HYDRANTS ARE TO
BE USED.
CONTRACTOR MUST TAKE ALL
NECESSARY PRECAUTIONS TO
INSURE THAT HYDRANT DRAIN
(WEEP HOLE) REMAINS OPEN



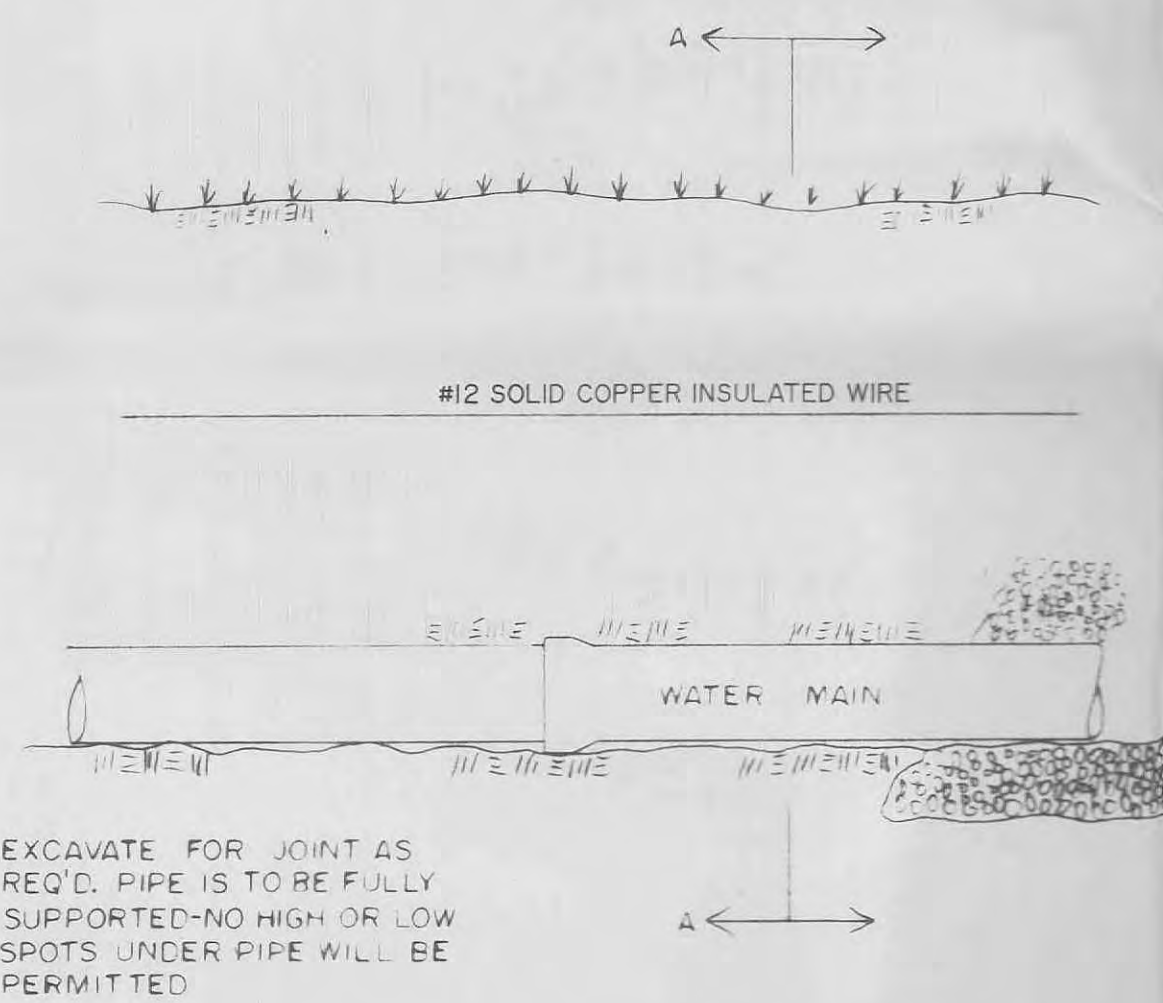
FLUSHING HYDRANT
NO SCALE



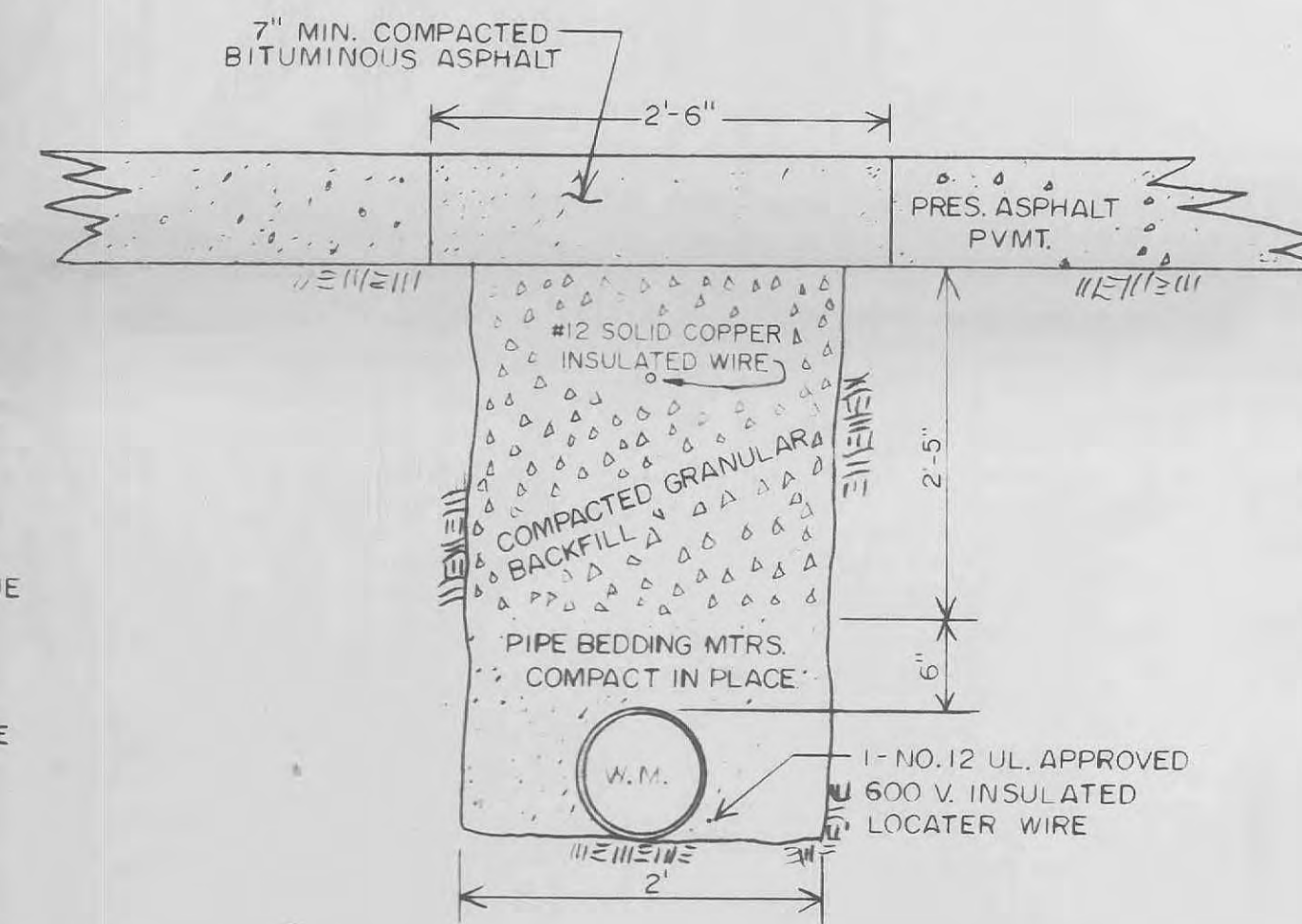
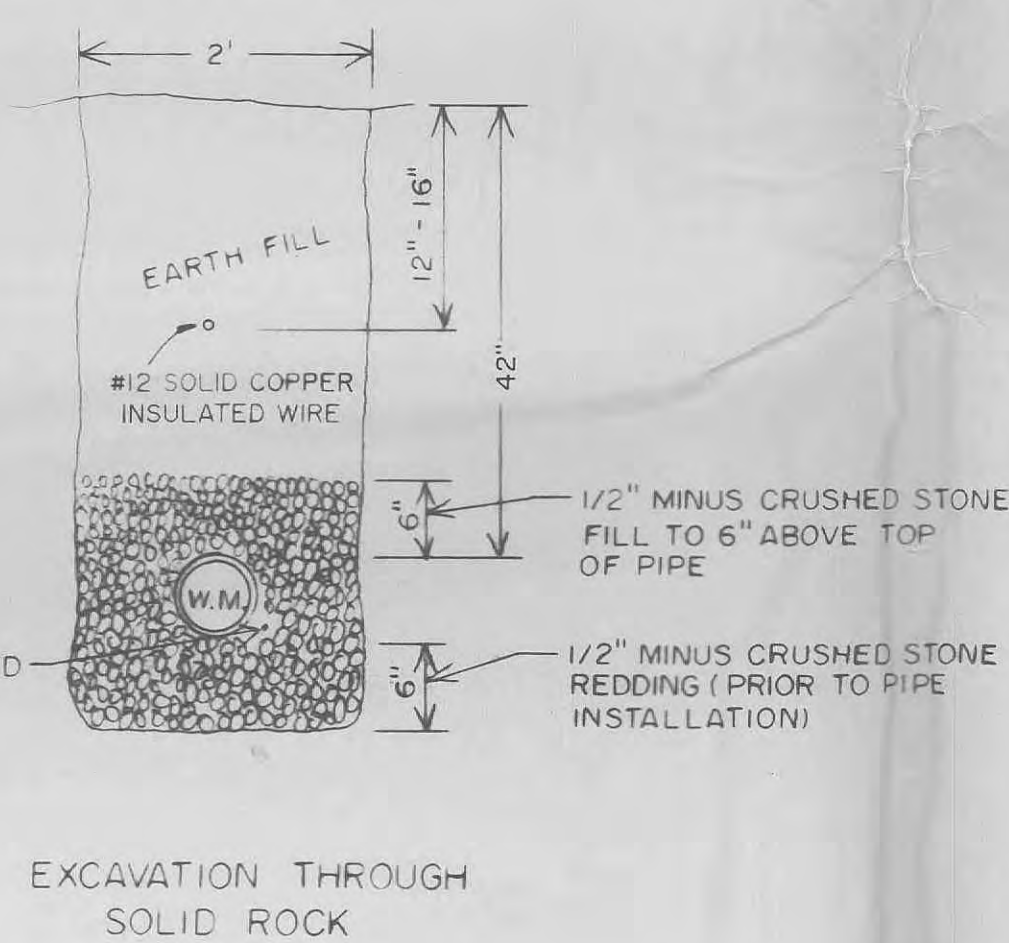
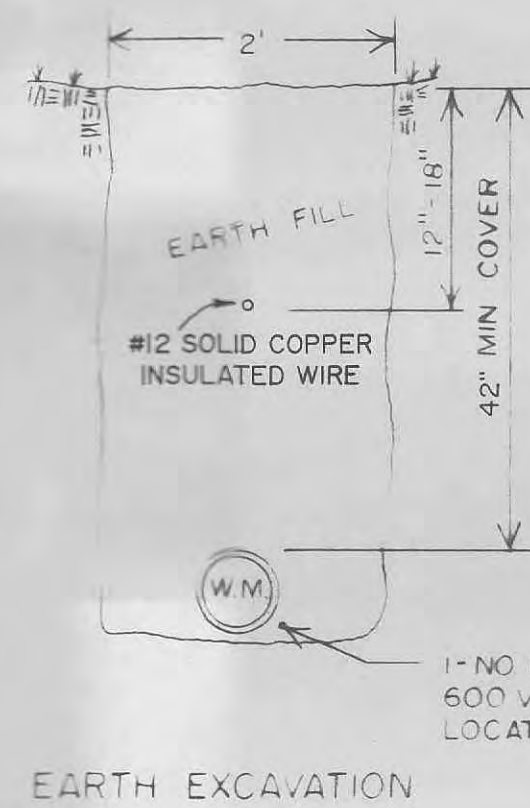
FIRE HYDRANT INSTALLATION DETAIL
NO SCALE



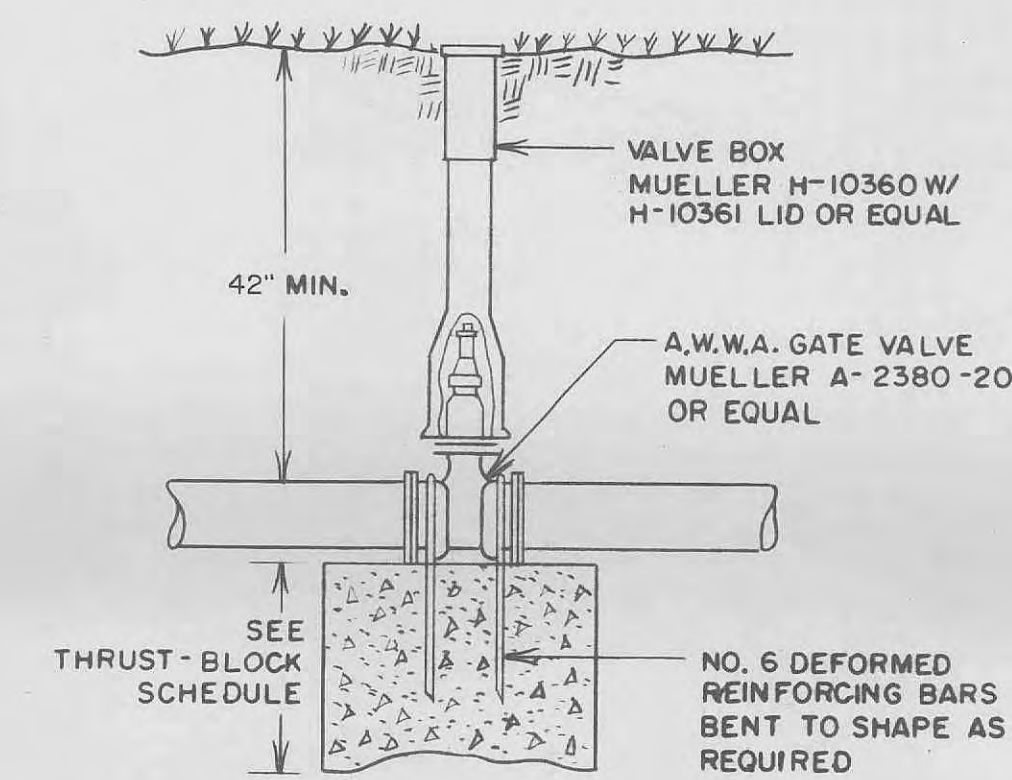
BLOW-OFF HYDRANT
NO SCALE



TYPICAL WATER MAIN TRENCHING DETAIL
NO SCALE



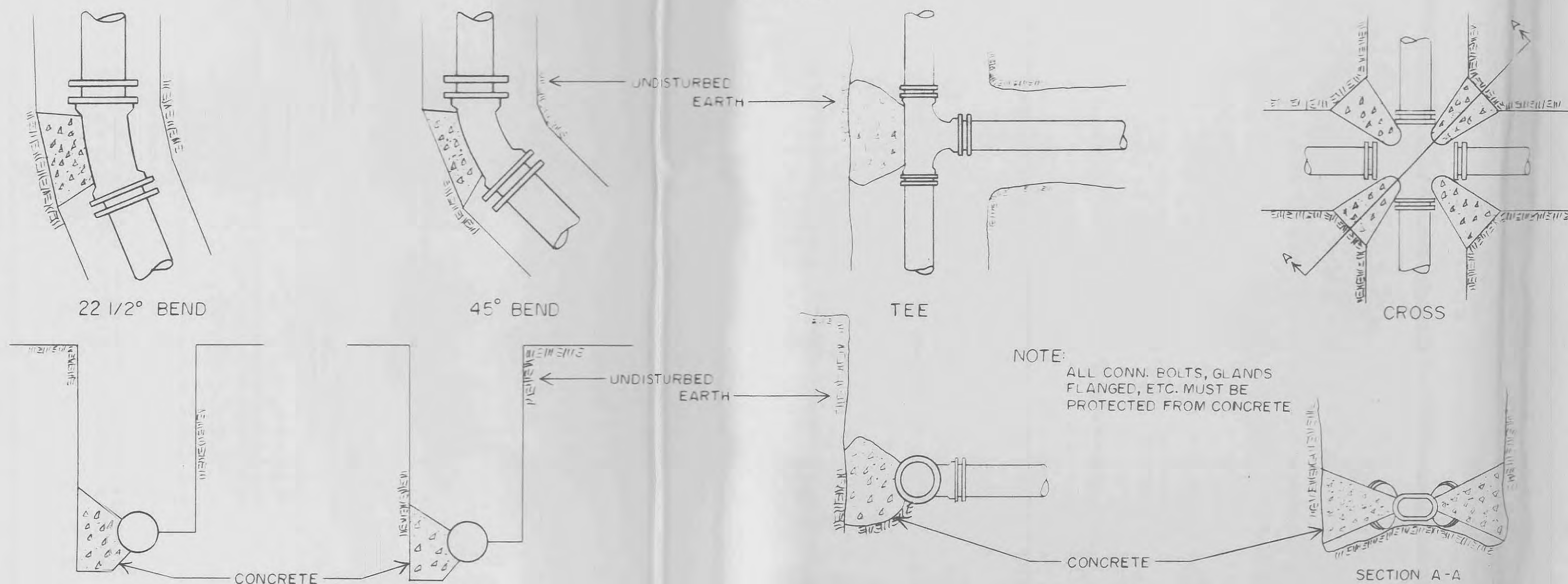
TYPICAL PAVED STREET OR ROAD TRENCH
BACKFILL & SURFACE REPLACEMENT DETAIL
SCALE: 1" = 1'-0"



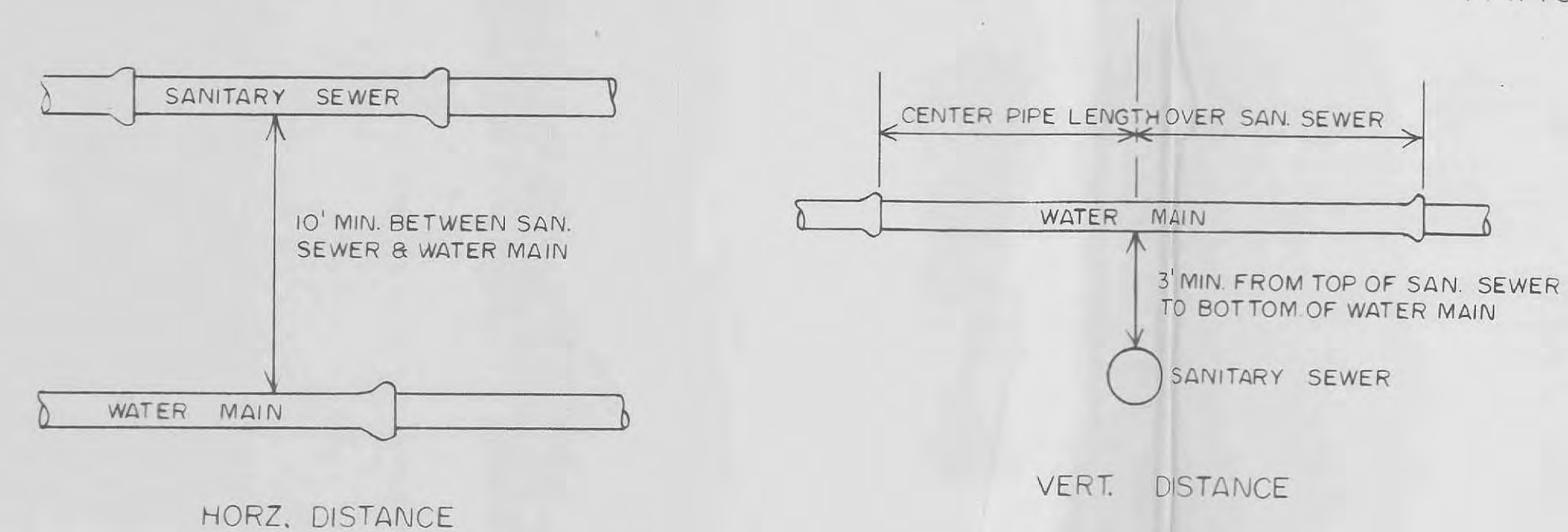
GATE VALVE W/ THRUST-BLOCK DETAIL
NO SCALE

MAIN SIZE	MIN. THRUSTBLOCK BEARING DIMENSIONS TO BEAR AGAINST UNDISTURBED EARTH				
	45° BEND	22 1/2° BEND	TEE	VALVE	CROSS
2"	5'x1'	5'x1'	5'x1'	5'x1'	5'x1'
4"	1'x1'	1'x1'	2'x1'	2'x1'	1'x1'
6"	1.5'x1'	1'x1'	2'x1'	2'x1'	1'x1'
8"	2'x1'	1'x1'	2'x2.5'	2'x2'	1'x1.5'
10"	2'x2.5'	1.5'x2'	2'x3.5'	2'x3'	2'x2'

THRUST-BLOCK SCHEDULE



TYPICAL THRUST-BLOCK DETAIL



TYPICAL WATER & SEWER SEPARATION
NO SCALE